

Converting Colors

CIELCh(52, 31.042, 60.656)

Have a look what the booklet for
CIELCh(52, 31.042, 60.656) contains.

CIELCh(52, 31.074, 60.656)	3
<i>Conversions</i>	4
<i>Details</i>	6
<i>Harmonies</i>	11
<i>Previews</i>	20
<i>Color Blindness Simulation</i>	23
<i>CSS Examples</i>	26

Color

CIELCh(52, 31.074, 60.656)

Conversions

Conversions Part 1

Format	Color
Hex	A2714E
RGB	162, 113, 78
RGB Percent	64%, 44%, 31%
CMY	0.3634, 0.5557, 0.6930
CMYK	0.00, 0.30, 0.52, 0.36
HSL	25°, 35%, 47%
HSV	25°, 52%, 64%
XYZ	22.2885, 20.1443, 9.9731
YIQ	123.6610, 40.4390, -0.4970

Conversions

Conversions Part 2

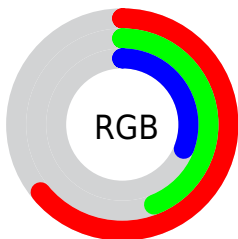
Format	Color
RYB	162, 138, 78
Decimal	10645838
CIELab	52.00, 15.23, 27.09
CIELCh	52, 31.074, 60.656
Yxy	20.1443, 0.4253, 0.3844
Android (android.graphics.Color)	4288835918 (0xFFA2714E)
YUV	123.6610, -22.5109, 33.6233
Hunter-Lab	44.8824, 10.0985, 18.2432

Details

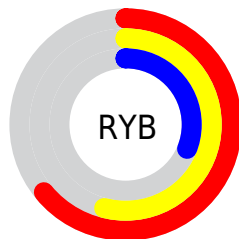
The CIELCh color **52, 31.074, 60.656** is a dark color, and the websafe version is hex **996633**. A complement of this color would be **51, 24.644, 254.970**, and the grayscale version is **52, 0.007, 296.813**.

A 20% lighter version of the original color is **72, 30.919, 60.489**, and **32, 31.488, 60.795** is the 20% darker color. If you saturate the color by 10%, you get **49, 38.124, 59.723**, and if you desaturate by 10%, it is **55, 24.330, 61.616**.

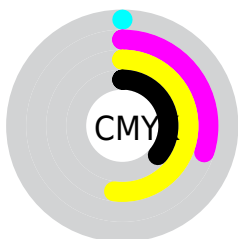
Distribution



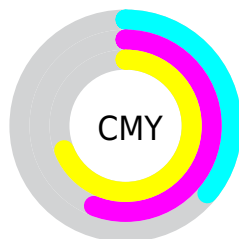
- Red (64%)
- Green (44%)
- Blue (31%)



- Red (64%)
- Yellow (54%)
- Blue (31%)



- Cyan (0%)
- Magenta (30%)
- Yellow (52%)
- Black (36%)



- Cyan (36%)
- Magenta (56%)
- Yellow (69%)

Brightness & Saturation Gradients

These gradients show how the CIELCh color 52, 31.074, 60.656 changes by changing the brightness by 10 percent. The first figure shows a shift by +10% for each color and the second figure -10%.

Similar to the brightness gradients but the following saturation gradients show a change of the CIELCh color 52, 31.074, 60.656 by changing the saturation by 10% instead.

■ 52, 31.074, 60.656

■ 52, 31.074, 60.656

■ 100, 31.074,
60.656

■ 42, 31.074, 60.656

■ 72, 31.074, 60.656

■ 32, 31.074, 60.656

■ 82, 31.074, 60.656

■ 22, 31.074, 60.656

■ 92, 31.074, 60.656

■ 12, 31.074, 60.656

■ 2, 31.074, 60.656

■ 0, 31.074, 60.656

■ 52, 31.074, 60.656

■ 52, 31.074, 60.656

■ 49, 38.124, 59.723

■ 55, 24.330, 61.616

■ 47, 45.337, 58.755

■ 57, 17.948, 62.600

■ 45, 52.378, 57.629

■ 60, 11.931, 63.606

■ 43, 58.594, 56.076

■ 63, 6.262, 64.613

■ 41, 63.085, 54.656

■ 66, 0.914, 65.309

■ 69, 4.145, 246.841

■ 72, 8.948, 247.817

■ 75, 13.523,
248.806

■ 78, 17.899,
249.776

Harmonies

Complementary

The Complementary color scheme is a pair of colors which are on the opposite of each other on the color wheel.



52, 31.074, 60.656



51, 24.644, 254.970

Rectangle

The Rectangle color scheme consists of four colors that form a rectangle on the color wheel.



52, 31.074, 60.656



52, 31.074, 110.656



52, 31.074, 240.656



52, 31.074, 290.656

Sweetspot

The Sweet Spot groups the original color and five complimentary colors.



52, 31.073, 60.661



79, 10.702, 64.160



45, 42.809, 343.327



41, 7.326, 63.963



93, 0.011, 296.813



45, 0.006, 296.813

Same Dimension

The Same Dimension uses a secret algorithm to generate beautiful new colors.



52, 31.073, 60.661



63, 47.659, 59.592



63, 41.078, 100.389



33, 2.999, 64.858



37, 58.018, 55.030



3, 4.504, 61.140

Inverse Universe

The Inverse Universe completely reimagines the original color for something new.



51, 24.644, 254.970



62, 35.708, 258.425



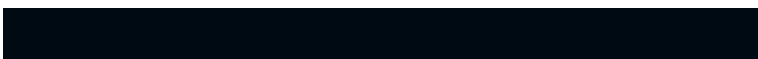
40, 46.034, 293.786



33, 2.901, 247.021



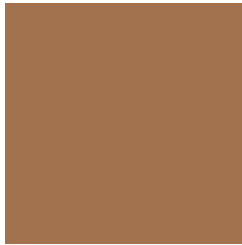
35, 39.458, 273.549



2, 4.700, 252.275

Previews

White Background



This preview shows how the CIELCh color 52, 31.074, 60.656 looks on a white background.

Color Contrast Check

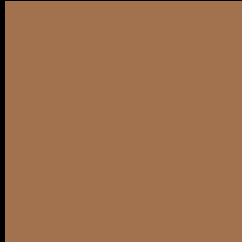
Large Text (above 18pt) WCAG AA ✓ Pass

Any Text WCAG AA × Fail

Large Text (above 18pt) WCAG AAA × Fail

Any Text WCAG AAA × Fail

Black Background



This preview shows how the CIELCh color 52, 31.074, 60.656 looks on a black background.

Color Contrast Check

Large Text (above 18pt) WCAG AA ✓ Pass

Any Text WCAG AA ✓ Pass

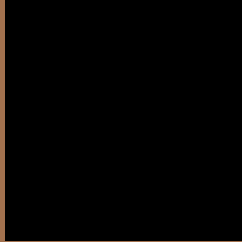
Large Text (above 18pt) WCAG AAA ✓ Pass

Any Text WCAG AAA × Fail

If you want to check with other color combinations, try the [Color Contrast Checker](#).

CIELCh 52, 31.074, 60.656

Background



This preview shows how black text looks on a background with the CIELCh color 52, 31.074, 60.656.



This preview shows how white text looks on a background with the CIELCh color 52, 31.074, 60.656.

Color Blindness Simulation

Color vision deficiency is a very complex topic, and I could not describe the different causes any better than Wikipedia does, so if you want to learn more, you should check out their [article about color blindness](#).

Dichromacy



Original Color

52, 31.074, 60.656

Protanopia

52, 24.026, 95.272

Deuteranopia

52, 28.370, 76.790



Tritanopia
52, 24.381, 10.384

Trichromacy



Original Color
52, 31.074, 60.656

Protanomaly
52, 25.372, 80.556

Deuteranomaly
52, 29.136, 71.229

Tritanomaly
52, 24.142, 31.605

Monochromacy



Original Color
52, 31.074, 60.656

Achromatopsia
52, 0.007, 296.813

Achromatomaly
52, 10.798, 63.874

CSS Examples

Text

The CSS property to change the color of the text to CIELCh 52, 31.074, 60.656 is called "color". The color property can be set on classes, ids or directly on the HTML element.

This example shows how text in the color `rgb(162, 113, 78)` looks like.

```
.text, #text, p{  
    color:rgb(162, 113, 78)  
}
```

If you want to add a text shadow in that color use the text-shadow property, you can generate a text shadow directly with our [CSS Text Shadow Generator](#).

Here you see how black text with a 4 pixel rgb(162, 113, 78) colored shadow looks like.

```
.shadow{ text-shadow: 4px 4px 2px rgb(162, 113, 78) }
```

Border

The CSS property to change the border of an element to CIELCh 52, 31.074, 60.656 is called "border". The border property can be set on classes, ids or directly on the HTML element.

This example shows the color as border, it can be applied via the CSS property "border" or "border-color".

```
.border, #border, table{ border:4px solid rgb(162, 113, 78) }
```

If only the border color should be changed use the property `border-color`.

```
.border{ border-color:rgb(162, 113, 78) }
```

If you want to add a box shadow in that color use:

Here you see how a box with a 4 pixel `rgb(162, 113, 78)` colored shadow looks like.

```
.boxshadow{ -moz-box-shadow:4px 4px 4px  
4px rgb(162, 113, 78); -webkit-box-  
shadow:4px 4px 4px 4px rgb(162, 113, 78);  
box-shadow:4px 4px 4px 4px rgb(162, 113,  
78) }
```

Background

The CSS property to change the background color of an element to CIELCh 52, 31.074, 60.656 is called "background". The background property can be set on classes, ids or directly on the HTML element.

```
.background, #background, body{  
background: rgb(162, 113, 78) }
```

If only the background color should be changed can be used:

```
.background{ background-color: rgb(162,  
113, 78) }
```

This example shows the color as background, it is applied via the CSS property "background".

To optimize and compress your CSS code, you can use our [online CSS compressor and optimizer](#) based on csstidy. If you want to create a linear or radial gradient as background or border, check our [CSS Gradient Generator](#).

Hey! You found this booklet interesting? Support Converting Colors with the new Membership Option!

The pro membership hides all ads, plus gives you double the colors in the color bucket, and more awesome pro features!

[Learn more, Memberships starting at \\$2.50/m!](#)

**Follow me
on Twitter!**

@ConvertingColor