

Converting Colors

CIELCh(52, 65.440, 9.826)

Have a look what the booklet for
CIELCh(52, 65.440, 9.826) contains.

CIELCh(52, 65.437, 9.934)	3
<i>Conversions</i>	4
<i>Details</i>	6
<i>Harmonies</i>	11
<i>Previews</i>	20
<i>Color Blindness Simulation</i>	23
<i>CSS Examples</i>	26

Color

CIELCh(52, 65.437, 9.934)

Conversions

Conversions Part 1

Format	Color
Hex	DF3E6C
RGB	223, 62, 108
RGB Percent	87%, 24%, 42%
CMY	0.1265, 0.7578, 0.5772
CMYK	0.00, 0.72, 0.52, 0.13
HSL	343°, 71%, 56%
HSV	343°, 72%, 87%
XYZ	34.7594, 20.1443, 16.1884
YIQ	115.3830, 81.1900, 48.4380

Conversions

Conversions Part 2

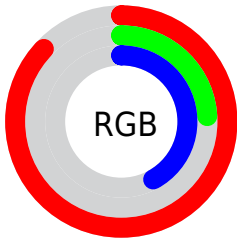
Format	Color
R_{YB}	223, 62, 108
Decimal	14630508
CIE _{Lab}	52.00, 64.46, 11.29
CIE _{LCh}	52, 65.437, 9.934
Yxy	20.1443, 0.4889, 0.2834
Android (android.graphics.Color)	4292820588 (0xFFDF3E6C)
YUV	115.3830, -3.6398, 94.3801
Hunter-Lab	44.8824, 59.6961, 10.0327

Details

The CIELCh color **52, 65.437, 9.934** is a dark color, and the websafe version is hex **CC3366**. The color can be described as dark muted rose. A complement of this color would be **80, 52.829, 168.159**, and the grayscale version is **48, 0.006, 296.813**.

A 20% lighter version of the original color is **68, 54.783, 4.581**, and **34, 60.619, 13.348** is the 20% darker color. If you saturate the color by 10%, you get **49, 71.826, 13.954**, and if you desaturate by 10%, it is **56, 57.671, 6.756**.

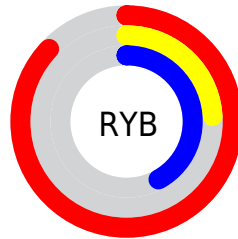
Distribution



Red (87%)

Green (24%)

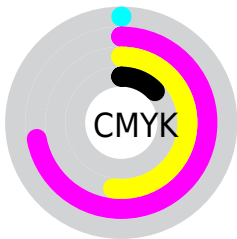
Blue (42%)



Red (87%)

Yellow (24%)

Blue (42%)

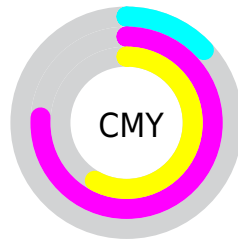


Cyan (0%)

Magenta (72%)

Yellow (52%)

Black (13%)



Cyan (13%)

Magenta (76%)

Yellow (58%)

Brightness & Saturation Gradients

These gradients show how the CIELCh color 52, 65.437, 9.934 changes by changing the brightness by 10 percent. The first figure shows a shift by +10% for each color and the second figure -10%.

Similar to the brightness gradients but the following saturation gradients show a change of the CIELCh color 52, 65.437, 9.934 by changing the saturation by 10% instead.

 52, 65.437, 9.934

 52, 65.437, 9.934

 100, 65.437, 9.934

 42, 65.437, 9.934

 72, 65.437, 9.934

 32, 65.437, 9.934

 82, 65.437, 9.934

 22, 65.437, 9.934

 92, 65.437, 9.934

 12, 65.437, 9.934

 2, 65.437, 9.934

 0, 65.437, 9.934

 52, 65.437, 9.934

 52, 65.437, 9.934

 49, 71.826, 13.954

 56, 57.671, 6.756

 48, 76.807, 18.895

 60, 48.869, 4.247

47, 80.086, 23.130

65, 39.460, 2.244

70, 29.829, 0.613

76, 20.264,
359.253

81, 10.950,
358.086

87, 1.990, 356.883

93, 6.573, 176.360

98, 11.224,
188.070

Harmonies

Complementary

The Complementary color scheme is a pair of colors which are on the opposite of each other on the color wheel.



52, 65.437, 9.934



80, 52.829, 168.159

Rectangle

The Rectangle color scheme consists of four colors that form a rectangle on the color wheel.



52, 65.437, 9.934



52, 65.437, 59.934



52, 65.437, 189.934



52, 65.437, 239.934

Sweetspot

The Sweet Spot groups the original color and five complimentary colors.



52, 65.434, 9.936



85, 22.329, 359.240



49, 91.998, 318.260



44, 15.075, 359.588



0, 0.000, 0.000



53, 0.007, 296.813

Same Dimension

The Same Dimension uses a secret algorithm to generate beautiful new colors.



52, 65.434, 9.936



55, 82.698, 16.500



56, 64.792, 41.622



44, 5.065, 357.778



37, 66.760, 22.140



6, 25.336, 8.437

Inverse Universe

The Inverse Universe completely reimagines the original color for something new.



52, 65.434, 9.936



55, 82.698, 16.500



72, 35.744, 227.070



44, 5.065, 357.778



37, 66.760, 22.140



6, 25.336, 8.437

Previews

White Background



This preview shows how the CIELCh color 52, 65.437, 9.934 looks on a white background.

Color Contrast Check

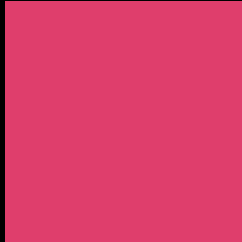
Large Text (above 18pt) WCAG AA ✓ Pass

Any Text WCAG AA ✗ Fail

Large Text (above 18pt) WCAG AAA ✗ Fail

Any Text WCAG AAA ✗ Fail

Black Background



This preview shows how the CIELCh color 52, 65.437, 9.934 looks on a black background.

Color Contrast Check

Large Text (above 18pt) WCAG AA ✓ Pass

Any Text WCAG AA ✓ Pass

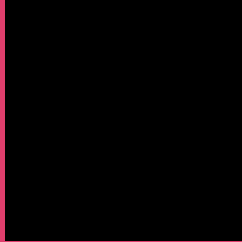
Large Text (above 18pt) WCAG AAA ✓ Pass

Any Text WCAG AAA × Fail

If you want to check with other color combinations, try the [Color Contrast Checker](#).

CIELCh 52, 65.437, 9.934

Background



This preview shows how black text looks on a background with the CIELCh color 52, 65.437, 9.934.



This preview shows how white text looks on a background with the CIELCh color 52, 65.437, 9.934.

Color Blindness Simulation

Color vision deficiency is a very complex topic, and I could not describe the different causes any better than Wikipedia does, so if you want to learn more, you should check out their [article about color blindness](#).

Dichromacy



Original Color
52, 65.437, 9.934

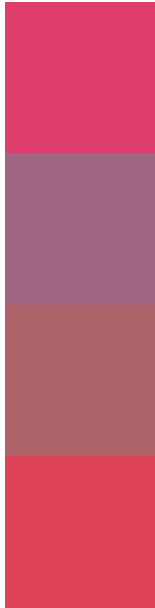
Protanopia
52, 9.880, 287.051

Deuteranopia
52, 16.039, 65.749



Tritanopia
52, 67.090, 28.397

Trichromacy



Original Color
52, 65.437, 9.934

Protanomaly
50, 28.112, 348.119

Deuteranomaly
50, 32.168, 19.672

Tritanomaly
52, 65.832, 21.637

Monochromacy



Original Color
52, 65.437, 9.934

Achromatopsia
48, 0.006, 296.813

Achromatomaly
48, 25.830, 2.030

CSS Examples

Text

The CSS property to change the color of the text to CIELCh 52, 65.437, 9.934 is called "color". The color property can be set on classes, ids or directly on the HTML element.

This example shows how text in the color `rgb(223, 62, 108)` looks like.

```
.text, #text, p{  
    color:rgb(223, 62, 108)  
}
```

If you want to add a text shadow in that color use the text-shadow property, you can generate a text shadow directly with our [CSS Text Shadow Generator](#).

Here you see how black text with a 4 pixel rgb(223, 62, 108) colored shadow looks like.

```
.shadow{ text-shadow: 4px 4px 2px rgb(223, 62, 108) }
```

Border

The CSS property to change the border of an element to CIELCh 52, 65.437, 9.934 is called "border". The border property can be set on classes, ids or directly on the HTML element.

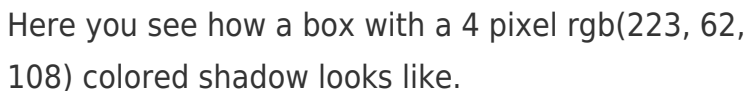
This example shows the color as border, it can be applied via the CSS property "border" or "border-color".

```
.border, #border, table{ border:4px solid rgb(223, 62, 108) }
```

If only the border color should be changed use the property `border-color`.

```
.border{ border-color:rgb(223, 62, 108) }
```

If you want to add a box shadow in that color use:



Here you see how a box with a 4 pixel `rgb(223, 62, 108)` colored shadow looks like.

```
.boxshadow{ -moz-box-shadow:4px 4px 4px 4px rgb(223, 62, 108); -webkit-box-shadow:4px 4px 4px 4px rgb(223, 62, 108); box-shadow:4px 4px 4px 4px rgb(223, 62, 108) }
```

Background

The CSS property to change the background color of an element to CIELCh 52, 65.437, 9.934 is called "background". The background property can be set on classes, ids or directly on the HTML element.

```
.background, #background, body{  
background: rgb(223, 62, 108) }
```

If only the background color should be changed can be used:

```
.background{ background-color: rgb(223, 62,  
108) }
```

This example shows the color as background, it is applied via the CSS property "background".

To optimize and compress your CSS code, you can use our [online CSS compressor and optimizer](#) based on csstidy. If you want to create a linear or radial gradient as background or border, check our [CSS Gradient Generator](#).

Hey! You found this booklet interesting? Support Converting Colors with the new Membership Option!

The pro membership hides all ads, plus gives you double the colors in the color bucket, and more awesome pro features!

[Learn more, Memberships starting at \\$2.50/m!](#)

**Follow me
on Twitter!**

@ConvertingColor