

Converting Colors

CIELCh(52, 70.103, 2.722)

Have a look what the booklet for
CIELCh(52, 70.103, 2.722) contains.

CIELCh(52, 70.103, 2.722)	3
<i>Conversions</i>	4
<i>Details</i>	6
<i>Harmonies</i>	11
<i>Previews</i>	20
<i>Color Blindness Simulation</i>	23
<i>CSS Examples</i>	26

Color

CIELCh(52, 70.103, 2.722)

Conversions

Conversions Part 1

Format	Color
Hex	E33379
RGB	227, 51, 121
RGB Percent	89%, 20%, 47%
CMY	0.1089, 0.7989, 0.5248
CMYK	0.00, 0.77, 0.47, 0.11
HSL	336°, 76%, 55%
HSV	336°, 77%, 89%
XYZ	36.4087, 20.1443, 20.1178
YIQ	111.6040, 82.4260, 59.0820

Conversions

Conversions Part 2

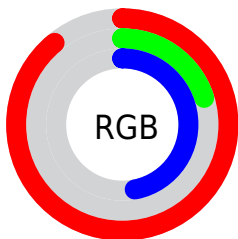
Format	Color
RYB	227, 51, 121
Decimal	14889849
CIELab	52.00, 70.02, 3.33
CIElCh	52, 70.103, 2.722
Yxy	20.1443, 0.4749, 0.2627
Android (android.graphics.Color)	4293079929 (0xFFE33379)
YUV	111.6040, 4.6322, 101.2023
Hunter-Lab	44.8824, 66.2553, 4.8419

Details

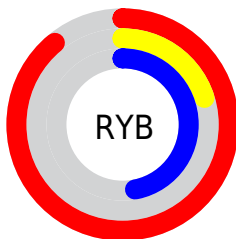
The CIELCh color **52, 70.103, 2.722** is a dark color, and the websafe version is hex **CC0066**. The color can be described as middle washed rose. A complement of this color would be **81, 63.026, 159.505**, and the grayscale version is **47, 0.006, 296.813**.

A 20% lighter version of the original color is **67, 59.631, 355.391**, and **35, 61.226, 7.373** is the 20% darker color. If you saturate the color by 10%, you get **50, 74.539, 6.608**, and if you desaturate by 10%, it is **55, 63.757, 359.664**.

Distribution



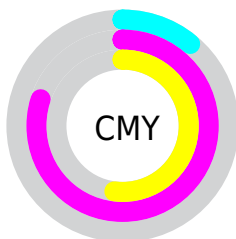
- Red (89%)
- Green (20%)
- Blue (47%)



- Red (89%)
- Yellow (20%)
- Blue (47%)



- Cyan (0%)
- Magenta (77%)
- Yellow (47%)
- Black (11%)



- Cyan (11%)
- Magenta (80%)
- Yellow (52%)

Brightness & Saturation Gradients

These gradients show how the CIELCh color 52, 70.103, 2.722 changes by changing the brightness by 10 percent. The first figure shows a shift by +10% for each color and the second figure -10%.

Similar to the brightness gradients but the following saturation gradients show a change of the CIELCh color 52, 70.103, 2.722 by changing the saturation by 10% instead.

 52, 70.103, 2.722  52, 70.103, 2.722

 100, 70.103, 2.722  42, 70.103, 2.722


 72, 70.103, 2.722  32, 70.103, 2.722



 82, 70.103, 2.722  22, 70.103, 2.722

 92, 70.103, 2.722  12, 70.103, 2.722

 2, 70.103, 2.722

 0, 70.103, 2.722

 52, 70.103, 2.722  52, 70.103, 2.722

 50, 74.539, 6.608  55, 63.757,
359.664

 49, 77.256, 11.415

48, 77.891, 12.712

59, 55.793,
357.248

64, 46.684,
355.311

69, 36.917,
353.720

74, 26.891,
352.381

80, 16.889,
351.226

86, 7.092, 350.185

92, 2.400, 169.568

98, 11.098,
169.699

Harmonies

Complementary

The Complementary color scheme is a pair of colors which are on the opposite of each other on the color wheel.



52, 70.103, 2.722



81, 63.026, 159.505

Rectangle

The Rectangle color scheme consists of four colors that form a rectangle on the color wheel.



52, 70.103, 2.722



52, 70.103, 52.722



52, 70.103, 182.722



52, 70.103, 232.722

Sweetspot

The Sweet Spot groups the original color and five complimentary colors.



52, 70.099, 2.723



85, 24.648, 351.867



46, 98.795, 315.286



43, 17.125, 352.301



0, 0.000, 0.000



53, 0.007, 296.813

Same Dimension

The Same Dimension uses a secret algorithm to generate beautiful new colors.



52, 70.099, 2.723



55, 83.323, 9.470



53, 75.217, 36.975



45, 5.482, 350.393



38, 64.907, 11.788



7, 26.899, 2.474

Inverse Universe

The Inverse Universe completely reimagines the original color for something new.



52, 70.099, 2.723



55, 83.323, 9.470



77, 39.037, 211.033



45, 5.482, 350.393



38, 64.907, 11.788



7, 26.899, 2.474

Previews

White Background



This preview shows how the CIELCh color 52, 70.103, 2.722 looks on a white background.

Color Contrast Check

Large Text (above 18pt) WCAG AA ✓ Pass

Any Text WCAG AA ✗ Fail

Large Text (above 18pt) WCAG AAA ✗ Fail

Any Text WCAG AAA ✗ Fail

Black Background



This preview shows how the CIELCh color 52, 70.103, 2.722 looks on a black background.

Color Contrast Check

Large Text (above 18pt) WCAG AA ✓ Pass

Any Text WCAG AA ✓ Pass

Large Text (above 18pt) WCAG AAA ✓ Pass

Any Text WCAG AAA × Fail

If you want to check with other color combinations, try the [Color Contrast Checker](#).

CIELCh 52, 70.103, 2.722

Background



This preview shows how black text looks on a background with the CIELCh color 52, 70.103, 2.722.



This preview shows how white text looks on a background with the CIELCh color 52, 70.103, 2.722.

Color Blindness Simulation

Color vision deficiency is a very complex topic, and I could not describe the different causes any better than Wikipedia does, so if you want to learn more, you should check out their [article about color blindness](#).

Dichromacy



Original Color

52, 70.103, 2.722

Protanopia

52, 23.322, 285.474

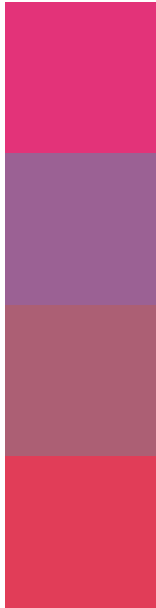
Deuteranopia

52, 9.749, 44.630



Tritanopia
52, 69.929, 29.497

Trichromacy



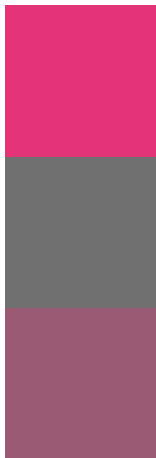
Original Color
52, 70.103, 2.722

Protanomaly
49, 36.569, 330.084

Deuteranomaly
50, 33.786, 3.536

Tritanomaly
52, 68.008, 19.867

Monochromacy



Original Color
52, 70.103, 2.722

Achromatopsia
47, 0.006, 296.813

Achromatomaly
46, 29.786, 354.613

CSS Examples

Text

The CSS property to change the color of the text to CIELCh 52, 70.103, 2.722 is called "color". The color property can be set on classes, ids or directly on the HTML element.

This example shows how text in the color `rgb(227, 51, 121)` looks like.

```
.text, #text, p{  
    color:rgb(227, 51, 121)  
}
```

If you want to add a text shadow in that color use the text-shadow property, you can generate a text shadow directly with our [CSS Text Shadow Generator](#).

Here you see how black text with a 4 pixel rgb(227, 51, 121) colored shadow looks like.

```
.shadow{ text-shadow: 4px 4px 2px rgb(227, 51, 121) }
```

Border

The CSS property to change the border of an element to CIELCh 52, 70.103, 2.722 is called "border". The border property can be set on classes, ids or directly on the HTML element.

This example shows the color as border, it can be applied via the CSS property "border" or "border-color".

```
.border, #border, table{ border:4px solid rgb(227, 51, 121) }
```

If only the border color should be changed use the property `border-color`.

```
.border{ border-color:rgb(227, 51, 121) }
```

If you want to add a box shadow in that color use:

Here you see how a box with a 4 pixel `rgb(227, 51, 121)` colored shadow looks like.

```
.boxshadow{ -moz-box-shadow:4px 4px 4px  
4px rgb(227, 51, 121); -webkit-box-  
shadow:4px 4px 4px 4px rgb(227, 51, 121);  
box-shadow:4px 4px 4px 4px rgb(227, 51,  
121) }
```

Background

The CSS property to change the background color of an element to CIELCh 52, 70.103, 2.722 is called "background". The background property can be set on classes, ids or directly on the HTML element.

```
.background, #background, body{  
background: rgb(227, 51, 121) }
```

If only the background color should be changed can be used:

```
.background{ background-color: rgb(227, 51,  
121) }
```

This example shows the color as background, it is applied via the CSS property "background".

To optimize and compress your CSS code, you can use our [online CSS compressor and optimizer](#) based on csstidy. If you want to create a linear or radial gradient as background or border, check our [CSS Gradient Generator](#).

Hey! You found this booklet interesting? Support Converting Colors with the new Membership Option!

The pro membership hides all ads, plus gives you double the colors in the color bucket, and more awesome pro features!

[Learn more, Memberships starting at \\$2.50/m!](#)

**Follow me
on Twitter!**

@ConvertingColor