

Converting Colors

CIELCh(52, 73.896, 8.372)

Have a look what the booklet for
CIELCh(52, 73.896, 8.372) contains.

CIELCh(52, 73.693, 8.384)	3
<i>Conversions</i>	4
<i>Details</i>	6
<i>Harmonies</i>	11
<i>Previews</i>	20
<i>Color Blindness Simulation</i>	23
<i>CSS Examples</i>	26

Color

CIELCh(52, 73.693, 8.384)

Conversions

Conversions Part 1

Format	Color
Hex	E92A6D
RGB	233, 42, 109
RGB Percent	91%, 16%, 43%
CMY	0.0854, 0.8341, 0.5719
CMYK	0.00, 0.82, 0.53, 0.09
HSL	339°, 81%, 54%
HSV	339°, 82%, 91%
XYZ	37.2824, 20.1443, 16.4390
YIQ	106.7470, 92.3290, 61.3290

Conversions

Conversions Part 2

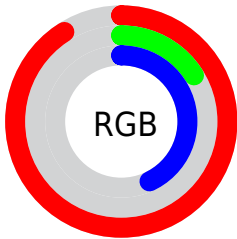
Format	Color
RYB	233, 42, 109
Decimal	15280749
CIELab	52.00, 72.91, 10.74
CIElCh	52, 73.693, 8.384
Yxy	20.1443, 0.5047, 0.2727
Android (android.graphics.Color)	4293470829 (0xFFE92A6D)
YUV	106.7470, 1.1107, 110.7239
Hunter-Lab	44.8824, 69.7298, 9.7017

Details

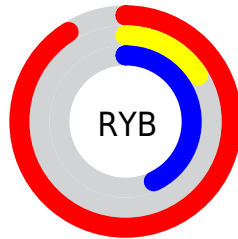
The CIELCh color **52, 73.693, 8.384** is a dark color, and the websafe version is hex **CC0066**. The color can be described as dark washed rose. A complement of this color would be **83, 63.444, 161.673**, and the grayscale version is **45, 0.006, 296.813**.

A 20% lighter version of the original color is **66, 60.214, 0.777**, and **36, 63.040, 14.703** is the 20% darker color. If you saturate the color by 10%, you get **50, 77.942, 13.021**, and if you desaturate by 10%, it is **55, 67.691, 4.684**.

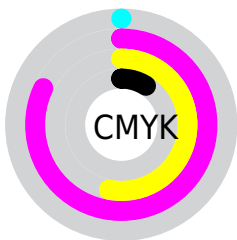
Distribution



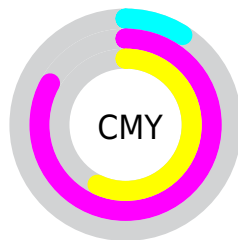
- Red (91%)
- Green (16%)
- Blue (43%)



- Red (91%)
- Yellow (16%)
- Blue (43%)



- Cyan (0%)
- Magenta (82%)
- Yellow (53%)
- Black (9%)



- Cyan (9%)
- Magenta (83%)
- Yellow (57%)

Brightness & Saturation Gradients

These gradients show how the CIELCh color 52, 73.693, 8.384 changes by changing the brightness by 10 percent. The first figure shows a shift by +10% for each color and the second figure -10%.

Similar to the brightness gradients but the following saturation gradients show a change of the CIELCh color 52, 73.693, 8.384 by changing the saturation by 10% instead.

 52, 73.693, 8.384  52, 73.693, 8.384

 100, 73.693, 8.384  42, 73.693, 8.384


 72, 73.693, 8.384  32, 73.693, 8.384

 82, 73.693, 8.384  22, 73.693, 8.384

 92, 73.693, 8.384  12, 73.693, 8.384

 2, 73.693, 8.384

 0, 73.693, 8.384

 52, 73.693, 8.384  52, 73.693, 8.384

 50, 77.942, 13.021  55, 67.691, 4.684

 49, 80.562, 17.366  58, 60.029, 1.771

63, 51.096,
359.465

68, 41.382,
357.609

73, 31.319,
356.079

79, 21.232,
354.787

85, 11.333,
353.662

91, 1.748, 352.448

98, 7.466, 171.959

Harmonies

Complementary

The Complementary color scheme is a pair of colors which are on the opposite of each other on the color wheel.



52, 73.693, 8.384



83, 63.444, 161.673

Rectangle

The Rectangle color scheme consists of four colors that form a rectangle on the color wheel.



52, 73.693, 8.384



52, 73.693, 58.384



52, 73.693, 188.384



52, 73.693, 238.384

Sweetspot

The Sweet Spot groups the original color and five complimentary colors.



52, 73.689, 8.386



84, 26.224, 355.186



46, 104.322, 316.166



42, 17.968, 355.642



0, 0.000, 0.000



53, 0.007, 296.813

Same Dimension

The Same Dimension uses a secret algorithm to generate beautiful new colors.



52, 73.689, 8.386



54, 85.607, 16.580



54, 80.342, 39.373



46, 5.432, 353.409



38, 66.403, 16.364



7, 27.833, 6.274

Inverse Universe

The Inverse Universe completely reimagines the original color for something new.



52, 73.689, 8.386



54, 85.607, 16.580



77, 39.639, 217.392



46, 5.432, 353.409



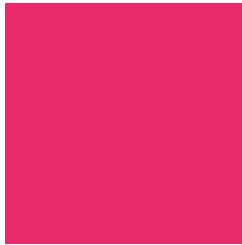
38, 66.403, 16.364



7, 27.833, 6.274

Previews

White Background



This preview shows how the CIELCh color 52, 73.693, 8.384 looks on a white background.

Color Contrast Check

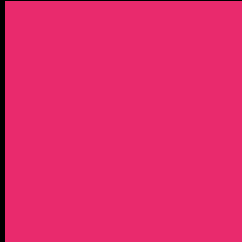
Large Text (above 18pt) WCAG AA ✓ Pass

Any Text WCAG AA ✗ Fail

Large Text (above 18pt) WCAG AAA ✗ Fail

Any Text WCAG AAA ✗ Fail

Black Background



This preview shows how the CIELCh color 52, 73.693, 8.384 looks on a black background.

Color Contrast Check

Large Text (above 18pt) WCAG AA ✓ Pass

Any Text WCAG AA ✓ Pass

Large Text (above 18pt) WCAG AAA ✓ Pass

Any Text WCAG AAA × Fail

If you want to check with other color combinations, try the [Color Contrast Checker](#).

CIELCh 52, 73.693, 8.384

Background



This preview shows how black text looks on a background with the CIELCh color 52, 73.693, 8.384.



This preview shows how white text looks on a background with the CIELCh color 52, 73.693, 8.384.

Color Blindness Simulation

Color vision deficiency is a very complex topic, and I could not describe the different causes any better than Wikipedia does, so if you want to learn more, you should check out their [article about color blindness](#).

Dichromacy



Original Color

52, 73.693, 8.384

Protanopia

52, 16.291, 287.122

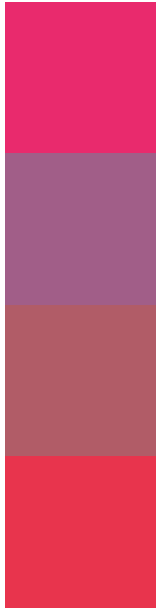
Deuteranopia

52, 16.039, 65.749



Tritanopia
52, 77.332, 32.074

Trichromacy



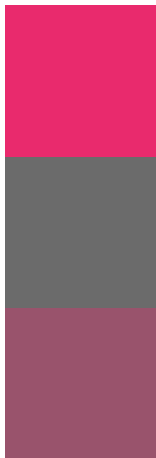
Original Color
52, 73.693, 8.384

Protanomaly
49, 35.262, 340.818

Deuteranomaly
49, 36.855, 15.023

Tritanomaly
52, 74.465, 23.808

Monochromacy



Original Color
52, 73.693, 8.384

Achromatopsia
45, 0.006, 296.813

Achromatomaly
44, 32.177, 357.567

CSS Examples

Text

The CSS property to change the color of the text to CIELCh 52, 73.693, 8.384 is called "color". The color property can be set on classes, ids or directly on the HTML element.

This example shows how text in the color `rgb(233, 42, 109)` looks like.

```
.text, #text, p{  
    color:rgb(233, 42, 109)  
}
```

If you want to add a text shadow in that color use the text-shadow property, you can generate a text shadow directly with our [CSS Text Shadow Generator](#).

Here you see how black text with a 4 pixel rgb(233, 42, 109) colored shadow looks like.

```
.shadow{ text-shadow: 4px 4px 2px rgb(233, 42, 109) }
```

Border

The CSS property to change the border of an element to CIELCh 52, 73.693, 8.384 is called "border". The border property can be set on classes, ids or directly on the HTML element.

This example shows the color as border, it can be applied via the CSS property "border" or "border-color".

```
.border, #border, table{ border:4px solid rgb(233, 42, 109) }
```

If only the border color should be changed use the property border-color.

```
.border{ border-color:rgb(233, 42, 109) }
```

If you want to add a box shadow in that color use:

Here you see how a box with a 4 pixel rgb(233, 42, 109) colored shadow looks like.

```
.boxshadow{ -moz-box-shadow:4px 4px 4px  
4px rgb(233, 42, 109); -webkit-box-  
shadow:4px 4px 4px 4px rgb(233, 42, 109);  
box-shadow:4px 4px 4px 4px rgb(233, 42,  
109) }
```

Background

The CSS property to change the background color of an element to CIELCh 52, 73.693, 8.384 is called "background". The background property can be set on classes, ids or directly on the HTML element.

```
.background, #background, body{  
background: rgb(233, 42, 109) }
```

If only the background color should be changed can be used:

```
.background{ background-color: rgb(233, 42,  
109) }
```

This example shows the color as background, it is applied via the CSS property "background".

To optimize and compress your CSS code, you can use our [online CSS compressor and optimizer](#) based on csstidy. If you want to create a linear or radial gradient as background or border, check our [CSS Gradient Generator](#).

Hey! You found this booklet interesting? Support Converting Colors with the new Membership Option!

The pro membership hides all ads, plus gives you double the colors in the color bucket, and more awesome pro features!

[Learn more, Memberships starting at \\$2.50/m!](#)

**Follow me
on Twitter!**

@ConvertingColor