

Converting Colors

CIELCh(52, 74.094, 4.930)

Have a look what the booklet for
CIELCh(52, 74.094, 4.930) contains.

CIELCh(52, 74.160, 5.055)	3
<i>Conversions</i>	4
<i>Details</i>	6
<i>Harmonies</i>	11
<i>Previews</i>	20
<i>Color Blindness Simulation</i>	23
<i>CSS Examples</i>	26

Color

CIELCh(52, 74.160, 5.055)

Conversions

Conversions Part 1

Format	Color
Hex	E92874
RGB	233, 40, 116
RGB Percent	91%, 16%, 45%
CMY	0.0857, 0.8422, 0.5446
CMYK	0.00, 0.83, 0.50, 0.09
HSL	336°, 82%, 54%
HSV	336°, 83%, 91%
XYZ	37.5784, 20.1443, 18.4670
YIQ	106.3710, 90.6320, 64.5520

Conversions

Conversions Part 2

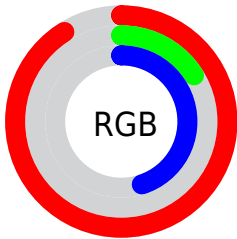
Format	Color
R_{YB}	233, 40, 116
Decimal	15280244
CIE _{Lab}	52.00, 73.87, 6.53
CIE _{LCh}	52, 74.160, 5.055
Yxy	20.1443, 0.4932, 0.2644
Android (android.graphics.Color)	4293470324 (0xFFE92874)
YUV	106.3710, 4.7471, 111.0536
Hunter-Lab	44.8824, 70.9070, 7.0227

Details

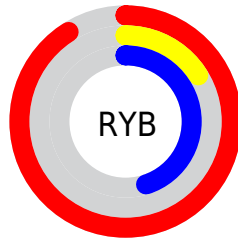
The CIELCh color **52, 74.160, 5.055** is a dark color, and the websafe version is hex **CC0066**. The color can be described as dark washed rose. A complement of this color would be **83, 66.898, 158.654**, and the grayscale version is **45, 0.006, 296.813**.

A 20% lighter version of the original color is **66, 61.646, 356.601**, and **36, 62.851, 11.567** is the 20% darker color. If you saturate the color by 10%, you get **50, 77.705, 9.485**, and if you desaturate by 10%, it is **55, 68.692, 1.539**.

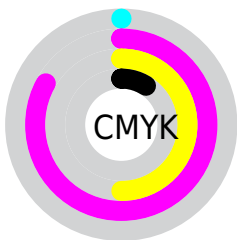
Distribution



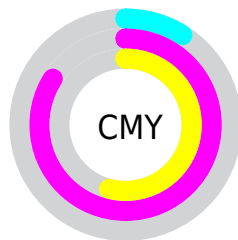
- Red (91%)
- Green (16%)
- Blue (45%)



- Red (91%)
- Yellow (16%)
- Blue (45%)



- Cyan (0%)
- Magenta (83%)
- Yellow (50%)
- Black (9%)




- Cyan (9%)
- Magenta (84%)
- Yellow (54%)

Brightness & Saturation Gradients

These gradients show how the CIELCh color 52, 74.160, 5.055 changes by changing the brightness by 10 percent. The first figure shows a shift by +10% for each color and the second figure -10%.

Similar to the brightness gradients but the following saturation gradients show a change of the CIELCh color 52, 74.160, 5.055 by changing the saturation by 10% instead.

 52, 74.160, 5.055  52, 74.160, 5.055

 100, 74.160, 5.055  42, 74.160, 5.055

 72, 74.160, 5.055  32, 74.160, 5.055

 82, 74.160, 5.055  22, 74.160, 5.055

 92, 74.160, 5.055  12, 74.160, 5.055

 2, 74.160, 5.055

 0, 74.160, 5.055

 52, 74.160, 5.055  52, 74.160, 5.055

 50, 77.705, 9.485  55, 68.692, 1.539

 50, 79.502, 13.183  58, 61.387,

358.773

63, 52.646,
356.578

67, 42.980,
354.801

73, 32.851,
353.327

79, 22.611,
352.074

85, 12.497,
350.977

91, 2.652, 349.880

97, 6.850, 169.294

Harmonies

Complementary

The Complementary color scheme is a pair of colors which are on the opposite of each other on the color wheel.



52, 74.160, 5.055



83, 66.898, 158.654

Rectangle

The Rectangle color scheme consists of four colors that form a rectangle on the color wheel.



52, 74.160, 5.055



52, 74.160, 55.055



52, 74.160, 185.055



52, 74.160, 235.055

Sweetspot

The Sweet Spot groups the original color and five complimentary colors.



52, 74.156, 5.057



84, 26.795, 352.355



45, 105.375, 315.196



42, 18.344, 352.791



0, 0.000, 0.000



53, 0.007, 296.813

Same Dimension

The Same Dimension uses a secret algorithm to generate beautiful new colors.



52, 74.156, 5.057



54, 84.869, 12.954



53, 82.486, 38.204



46, 5.569, 350.639



38, 65.649, 12.227



7, 27.936, 3.334

Inverse Universe

The Inverse Universe completely reimagines the original color for something new.



52, 74.156, 5.057



54, 84.869, 12.954



79, 40.636, 211.709



46, 5.569, 350.639



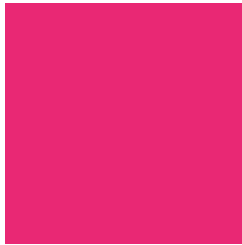
38, 65.649, 12.227



7, 27.936, 3.334

Previews

White Background



This preview shows how the CIELCh color 52, 74.160, 5.055 looks on a white background.

Color Contrast Check

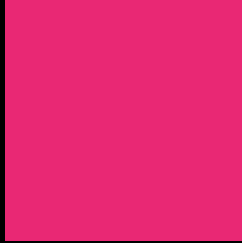
Large Text (above 18pt) WCAG AA ✓ Pass

Any Text WCAG AA ✗ Fail

Large Text (above 18pt) WCAG AAA ✗ Fail

Any Text WCAG AAA ✗ Fail

Black Background



This preview shows how the CIELCh color 52, 74.160, 5.055 looks on a black background.

Color Contrast Check

Large Text (above 18pt) WCAG AA ✓ Pass

Any Text WCAG AA ✓ Pass

Large Text (above 18pt) WCAG AAA ✓ Pass

Any Text WCAG AAA × Fail

If you want to check with other color combinations, try the [Color Contrast Checker](#).

CIELCh 52, 74.160, 5.055

Background



This preview shows how black text looks on a background with the CIELCh color 52, 74.160, 5.055.



This preview shows how white text looks on a background with the CIELCh color 52, 74.160, 5.055.

Color Blindness Simulation

Color vision deficiency is a very complex topic, and I could not describe the different causes any better than Wikipedia does, so if you want to learn more, you should check out their [article about color blindness](#).

Dichromacy



Original Color

52, 74.160, 5.055

Protanopia

52, 22.147, 285.751

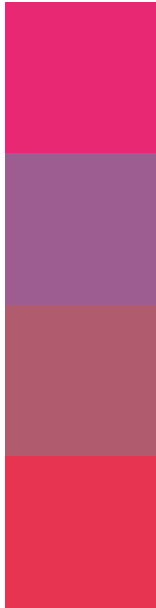
Deuteranopia

52, 12.471, 56.988



Tritanopia
52, 76.489, 31.869

Trichromacy



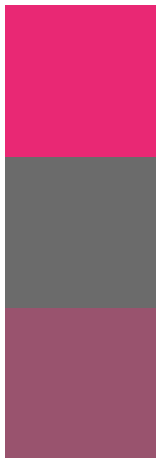
Original Color
52, 74.160, 5.055

Protanomaly
48, 38.542, 333.167

Deuteranomaly
49, 36.927, 7.922

Tritanomaly
52, 73.567, 22.425

Monochromacy



Original Color
52, 74.160, 5.055

Achromatopsia
45, 0.006, 296.813

Achromatomaly
44, 32.531, 355.597

CSS Examples

Text

The CSS property to change the color of the text to CIELCh 52, 74.160, 5.055 is called "color". The color property can be set on classes, ids or directly on the HTML element.

This example shows how text in the color `rgb(233, 40, 116)` looks like.

```
.text, #text, p{  
    color:rgb(233, 40, 116)  
}
```

If you want to add a text shadow in that color use the text-shadow property, you can generate a text shadow directly with our [CSS Text Shadow Generator](#).

Here you see how black text with a 4 pixel rgb(233, 40, 116) colored shadow looks like.

```
.shadow{ text-shadow: 4px 4px 2px rgb(233, 40, 116) }
```

Border

The CSS property to change the border of an element to CIELCh 52, 74.160, 5.055 is called "border". The border property can be set on classes, ids or directly on the HTML element.

This example shows the color as border, it can be applied via the CSS property "border" or "border-color".

```
.border, #border, table{ border:4px solid rgb(233, 40, 116) }
```

If only the border color should be changed use the property border-color.

```
.border{ border-color:rgb(233, 40, 116) }
```

If you want to add a box shadow in that color use:

Here you see how a box with a 4 pixel rgb(233, 40, 116) colored shadow looks like.

```
.boxshadow{ -moz-box-shadow:4px 4px 4px  
4px rgb(233, 40, 116); -webkit-box-  
shadow:4px 4px 4px 4px rgb(233, 40, 116);  
box-shadow:4px 4px 4px 4px rgb(233, 40,  
116) }
```

Background

The CSS property to change the background color of an element to CIELCh 52, 74.160, 5.055 is called "background". The background property can be set on classes, ids or directly on the HTML element.

```
.background, #background, body{  
background: rgb(233, 40, 116) }
```

If only the background color should be changed can be used:

```
.background{ background-color: rgb(233, 40,  
116) }
```

This example shows the color as background, it is applied via the CSS property "background".

To optimize and compress your CSS code, you can use our [online CSS compressor and optimizer](#) based on csstidy. If you want to create a linear or radial gradient as background or border, check our [CSS Gradient Generator](#).

Hey! You found this booklet interesting? Support Converting Colors with the new Membership Option!

The pro membership hides all ads, plus gives you double the colors in the color bucket, and more awesome pro features!

[Learn more, Memberships starting at \\$2.50/m!](#)

**Follow me
on Twitter!**

@ConvertingColor