

Converting Colors

CIELCh(52, 74.687, 8.684)

Have a look what the booklet for
CIELCh(52, 74.687, 8.684) contains.

CIELCh(52, 74.896, 8.898)	3
<i>Conversions</i>	4
<i>Details</i>	6
<i>Harmonies</i>	11
<i>Previews</i>	20
<i>Color Blindness Simulation</i>	23
<i>CSS Examples</i>	26

Color

CIELCh(52, 74.896, 8.898)

Conversions

Conversions Part 1

Format	Color
Hex	EB276C
RGB	235, 39, 108
RGB Percent	92%, 15%, 42%
CMY	0.0792, 0.8480, 0.5770
CMYK	0.00, 0.83, 0.54, 0.08
HSL	339°, 83%, 54%
HSV	339°, 83%, 92%
XYZ	37.6162, 20.1443, 16.0532
YIQ	105.4700, 94.6670, 63.0110

Conversions

Conversions Part 2

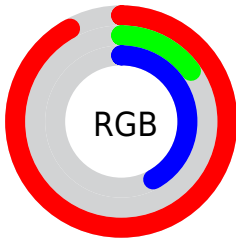
Format	Color
R_{YB}	235, 39, 108
Decimal	15411052
CIE _{Lab}	52.00, 73.99, 11.58
CIE _{LCh}	52, 74.896, 8.898
Yxy	20.1443, 0.5096, 0.2729
Android (android.graphics.Color)	4293601132 (0xFFEB276C)
YUV	105.4700, 1.2473, 113.5978
Hunter-Lab	44.8824, 71.0575, 10.2113

Details

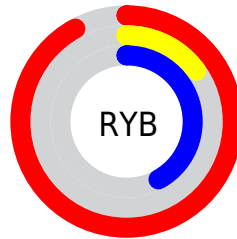
The CIELCh color **52, 74.896, 8.898** is a dark color, and the websafe version is hex **FF3366**. The color can be described as dark washed rose. A complement of this color would be **83, 64.712, 161.181**, and the grayscale version is **44, 0.006, 296.813**.

A 20% lighter version of the original color is **65, 60.553, 1.045**, and **36, 63.786, 15.713** is the 20% darker color. If you saturate the color by 10%, you get **50, 78.870, 13.685**, and if you desaturate by 10%, it is **55, 69.181, 5.061**.

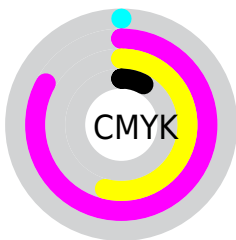
Distribution



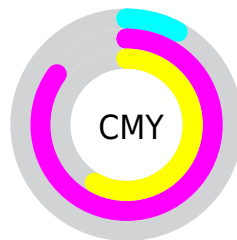
- Red (92%)
- Green (15%)
- Blue (42%)



- Red (92%)
- Yellow (15%)
- Blue (42%)



- Cyan (0%)
- Magenta (83%)
- Yellow (54%)
- Black (8%)




- Cyan (8%)
- Magenta (85%)
- Yellow (58%)

Brightness & Saturation Gradients

These gradients show how the CIELCh color 52, 74.896, 8.898 changes by changing the brightness by 10 percent. The first figure shows a shift by +10% for each color and the second figure -10%.

Similar to the brightness gradients but the following saturation gradients show a change of the CIELCh color 52, 74.896, 8.898 by changing the saturation by 10% instead.

 52, 74.896, 8.898

 52, 74.896, 8.898

 100, 74.896, 8.898

 42, 74.896, 8.898

 72, 74.896, 8.898

 32, 74.896, 8.898

 82, 74.896, 8.898

 22, 74.896, 8.898

 92, 74.896, 8.898

 12, 74.896, 8.898

 2, 74.896, 8.898

 0, 74.896, 8.898


 52, 74.896, 8.898

 52, 74.896, 8.898

 50, 78.870, 13.685

 55, 69.181, 5.061

 50, 80.921, 17.177

 58, 61.746, 2.039

62, 52.949,
359.651

67, 43.279,
357.735

73, 33.189,
356.161

79, 23.026,
354.837

85, 13.022,
353.692

91, 3.314, 352.592

97, 6.027, 171.964

Harmonies

Complementary

The Complementary color scheme is a pair of colors which are on the opposite of each other on the color wheel.



52, 74.896, 8.898



83, 64.712, 161.181

Rectangle

The Rectangle color scheme consists of four colors that form a rectangle on the color wheel.



52, 74.896, 8.898



52, 74.896, 58.898



52, 74.896, 188.898



52, 74.896, 238.898

Sweetspot

The Sweet Spot groups the original color and five complimentary colors.



52, 74.892, 8.900



84, 26.251, 355.038



46, 106.122, 316.121



42, 17.986, 355.492



0, 0.000, 0.000



53, 0.007, 296.813

Same Dimension

The Same Dimension uses a secret algorithm to generate beautiful new colors.



52, 74.892, 8.900



54, 86.223, 17.455



54, 82.506, 39.667



46, 5.439, 353.263



38, 66.355, 16.153



7, 27.836, 6.129

Inverse Universe

The Inverse Universe completely reimagines the original color for something new.



52, 74.892, 8.900



54, 86.223, 17.455



77, 40.064, 217.712



46, 5.439, 353.263



38, 66.355, 16.153



7, 27.836, 6.129

Previews

White Background



This preview shows how the CIELCh color 52, 74.896, 8.898 looks on a white background.

Color Contrast Check

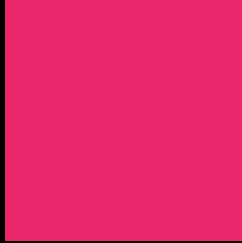
Large Text (above 18pt) WCAG AA ✓ Pass

Any Text WCAG AA ✗ Fail

Large Text (above 18pt) WCAG AAA ✗ Fail

Any Text WCAG AAA ✗ Fail

Black Background



This preview shows how the CIELCh color 52, 74.896, 8.898 looks on a black background.

Color Contrast Check

Large Text (above 18pt) WCAG AA ✓ Pass

Any Text WCAG AA ✓ Pass

Large Text (above 18pt) WCAG AAA ✓ Pass

Any Text WCAG AAA × Fail

If you want to check with other color combinations, try the [Color Contrast Checker](#).

CIELCh 52, 74.896, 8.898

Background



This preview shows how black text looks on a background with the CIELCh color 52, 74.896, 8.898.



This preview shows how white text looks on a background with the CIELCh color 52, 74.896, 8.898.

Color Blindness Simulation

Color vision deficiency is a very complex topic, and I could not describe the different causes any better than Wikipedia does, so if you want to learn more, you should check out their [article about color blindness](#).

Dichromacy



Original Color

52, 74.896, 8.898

Protanopia

52, 15.148, 285.188

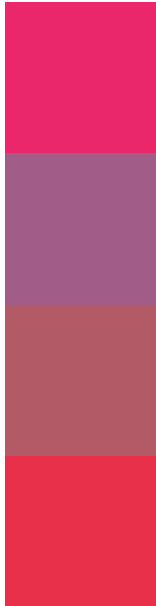
Deuteranopia

52, 16.487, 66.981



Tritanopia
52, 78.812, 32.249

Trichromacy



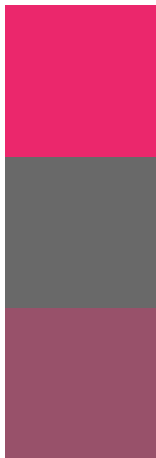
Original Color
52, 74.896, 8.898

Protanomaly
48, 35.558, 341.344

Deuteranomaly
49, 38.179, 14.802

Tritanomaly
52, 76.007, 24.072

Monochromacy



Original Color
52, 74.896, 8.898

Achromatopsia
44, 0.006, 296.813

Achromatomaly
44, 32.614, 358.079

CSS Examples

Text

The CSS property to change the color of the text to CIELCh 52, 74.896, 8.898 is called "color". The color property can be set on classes, ids or directly on the HTML element.

This example shows how text in the color `rgb(235, 39, 108)` looks like.

```
.text, #text, p{  
    color:rgb(235, 39, 108)  
}
```

If you want to add a text shadow in that color use the text-shadow property, you can generate a text shadow directly with our [CSS Text Shadow Generator](#).

Here you see how black text with a 4 pixel rgb(235, 39, 108) colored shadow looks like.

```
.shadow{ text-shadow: 4px 4px 2px rgb(235, 39, 108) }
```

Border

The CSS property to change the border of an element to CIELCh 52, 74.896, 8.898 is called "border". The border property can be set on classes, ids or directly on the HTML element.

This example shows the color as border, it can be applied via the CSS property "border" or "border-color".

```
.border, #border, table{ border:4px solid rgb(235, 39, 108) }
```

If only the border color should be changed use the property border-color.

```
.border{ border-color:rgb(235, 39, 108) }
```

If you want to add a box shadow in that color use:

Here you see how a box with a 4 pixel rgb(235, 39, 108) colored shadow looks like.

```
.boxshadow{ -moz-box-shadow:4px 4px 4px  
4px rgb(235, 39, 108); -webkit-box-  
shadow:4px 4px 4px 4px rgb(235, 39, 108);  
box-shadow:4px 4px 4px 4px rgb(235, 39,  
108) }
```

Background

The CSS property to change the background color of an element to CIELCh 52, 74.896, 8.898 is called "background". The background property can be set on classes, ids or directly on the HTML element.

```
.background, #background, body{  
background: rgb(235, 39, 108) }
```

If only the background color should be changed can be used:

```
.background{ background-color: rgb(235, 39,  
108) }
```

This example shows the color as background, it is applied via the CSS property "background".

To optimize and compress your CSS code, you can use our [online CSS compressor and optimizer](#) based on csstidy. If you want to create a linear or radial gradient as background or border, check our [CSS Gradient Generator](#).

Hey! You found this booklet interesting? Support Converting Colors with the new Membership Option!

The pro membership hides all ads, plus gives you double the colors in the color bucket, and more awesome pro features!

[Learn more, Memberships starting at \\$2.50/m!](#)

**Follow me
on Twitter!**

@ConvertingColor