

Converting Colors

CIELCh(52, 79.317, 17.476)

Have a look what the booklet for
CIELCh(52, 79.317, 17.476) contains.

CIELCh(52, 79.345, 17.459)	3
<i>Conversions</i>	4
<i>Details</i>	6
<i>Harmonies</i>	11
<i>Previews</i>	20
<i>Color Blindness Simulation</i>	23
<i>CSS Examples</i>	26

Color

CIELCh(52, 79.345, 17.459)

Conversions

Conversions Part 1

Format	Color
Hex	F01E58
RGB	240, 30, 88
RGB Percent	94%, 12%, 35%
CMY	0.0590, 0.8826, 0.6550
CMYK	0.00, 0.88, 0.63, 0.06
HSL	343°, 87%, 53%
HSV	343°, 88%, 94%
XYZ	38.1397, 20.1443, 11.1023
YIQ	99.4020, 106.5420, 62.5580

Conversions

Conversions Part 2

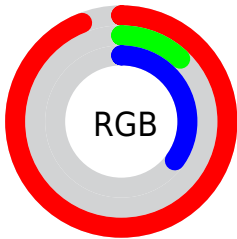
Format	Color
R_{YB}	240, 30, 88
Decimal	15736408
CIE _{Lab}	52.00, 75.69, 23.81
CIE _{LCh}	52, 79.345, 17.459
Yxy	20.1443, 0.5497, 0.2903
Android (android.graphics.Color)	4293926488 (0xFFFF01E58)
YUV	99.4020, -5.6212, 123.3044
Hunter-Lab	44.8824, 73.1394, 16.7515

Details

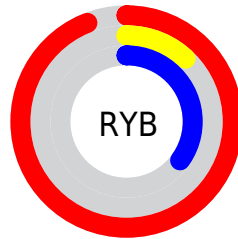
The CIELCh color **52, 79.345, 17.459** is a dark color, and the websafe version is hex **FF3366**. The color can be described as dark washed red. A complement of this color would be **85, 61.978, 166.029**, and the grayscale version is **42, 0.006, 296.813**.

A 20% lighter version of the original color is **64, 61.671, 10.965**, and **37, 68.325, 25.726** is the 20% darker color. If you saturate the color by 10%, you get **51, 84.139, 22.897**, and if you desaturate by 10%, it is **54, 73.272, 12.872**.

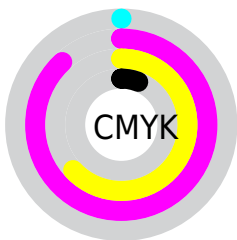
Distribution



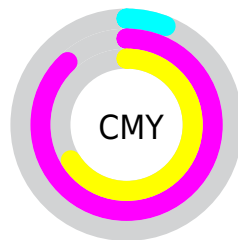
- Red (94%)
- Green (12%)
- Blue (35%)



- Red (94%)
- Yellow (12%)
- Blue (35%)



- Cyan (0%)
- Magenta (88%)
- Yellow (63%)
- Black (6%)



- Cyan (6%)
- Magenta (88%)
- Yellow (66%)


Brightness & Saturation Gradients

These gradients show how the CIELCh color 52, 79.345, 17.459 changes by changing the brightness by 10 percent. The first figure shows a shift by +10% for each color and the second figure -10%.

Similar to the brightness gradients but the following saturation gradients show a change of the CIELCh color 52, 79.345, 17.459 by changing the saturation by 10% instead.

 52, 79.345, 17.459

 52, 79.345, 17.459

 100, 79.345,
17.459

 42, 79.345, 17.459

 72, 79.345, 17.459

 32, 79.345, 17.459

 82, 79.345, 17.459

 22, 79.345, 17.459

 92, 79.345, 17.459

 12, 79.345, 17.459

 2, 79.345, 17.459

 0, 79.345, 17.459

 52, 79.345, 17.459

 52, 79.345, 17.459

 51, 84.139, 22.897

 54, 73.272, 12.872

 51, 85.310, 24.255

 57, 65.708, 9.194

62, 56.850, 6.295

66, 47.119, 4.002

72, 36.962, 2.161

78, 26.743, 0.650

84, 16.714,
359.379

90, 7.024, 358.259

96, 2.252, 177.655

Harmonies

Complementary

The Complementary color scheme is a pair of colors which are on the opposite of each other on the color wheel.



52, 79.345, 17.459



85, 61.978, 166.029

Rectangle

The Rectangle color scheme consists of four colors that form a rectangle on the color wheel.



52, 79.345, 17.459



52, 79.345, 67.459



52, 79.345, 197.459



52, 79.345, 247.459

Sweetspot

The Sweet Spot groups the original color and five complimentary colors.



52, 79.341, 17.461



83, 26.477, 0.454



48, 109.452, 318.467



42, 18.050, 0.936



0, 0.000, 0.000



53, 0.007, 296.813

Same Dimension

The Same Dimension uses a secret algorithm to generate beautiful new colors.



52, 79.341, 17.461



54, 89.453, 24.461



56, 84.728, 43.802



47, 5.324, 358.473



39, 69.331, 23.192



8, 28.817, 11.686

Inverse Universe

The Inverse Universe completely reimagines the original color for something new.



52, 79.341, 17.461



54, 89.453, 24.461



73, 40.986, 234.909



47, 5.324, 358.473



39, 69.331, 23.192



8, 28.817, 11.686

Previews

White Background



This preview shows how the CIELCh color 52, 79.345, 17.459 looks on a white background.

Color Contrast Check

Large Text (above 18pt) WCAG AA ✓ Pass

Any Text WCAG AA × Fail

Large Text (above 18pt) WCAG AAA × Fail

Any Text WCAG AAA × Fail

Black Background



This preview shows how the CIELCh color 52, 79.345, 17.459 looks on a black background.

Color Contrast Check

Large Text (above 18pt) WCAG AA ✓ Pass

Any Text WCAG AA ✓ Pass

Large Text (above 18pt) WCAG AAA ✓ Pass

Any Text WCAG AAA × Fail

If you want to check with other color combinations, try the [Color Contrast Checker](#).

CIELCh 52, 79.345, 17.459

Background



This preview shows how black text looks on a background with the CIELCh color 52, 79.345, 17.459.

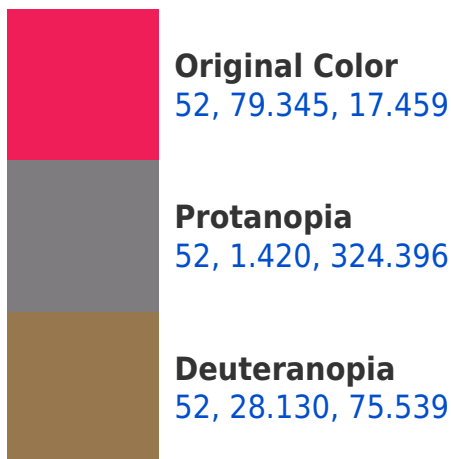


This preview shows how white text looks on a background with the CIELCh color 52, 79.345, 17.459.

Color Blindness Simulation

Color vision deficiency is a very complex topic, and I could not describe the different causes any better than Wikipedia does, so if you want to learn more, you should check out their [article about color blindness](#).

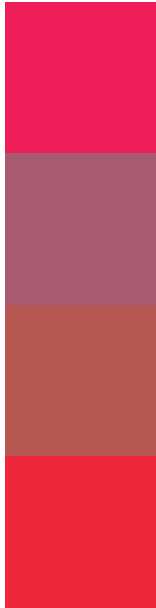
Dichromacy





Tritanopia
52, 86.191, 34.997

Trichromacy



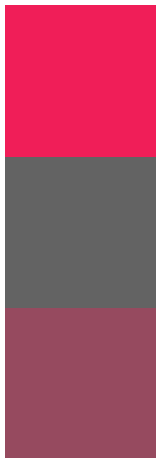
Original Color
52, 79.345, 17.459

Protanomaly
48, 34.092, 2.811

Deuteranomaly
49, 43.965, 29.140

Tritanomaly
52, 83.175, 29.383

Monochromacy



Original Color
52, 79.345, 17.459

Achromatopsia
42, 0.006, 296.813

Achromatomaly
42, 34.281, 4.316

CSS Examples

Text

The CSS property to change the color of the text to CIELCh 52, 79.345, 17.459 is called "color". The color property can be set on classes, ids or directly on the HTML element.

This example shows how text in the color `rgb(240, 30, 88)` looks like.

```
.text, #text, p{  
    color:rgb(240, 30, 88)  
}
```

If you want to add a text shadow in that color use the text-shadow property, you can generate a text shadow directly with our [CSS Text Shadow Generator](#).

Here you see how black text with a 4 pixel rgb(240, 30, 88) colored shadow looks like.

```
.shadow{ text-shadow: 4px 4px 2px rgb(240, 30, 88) }
```

Border

The CSS property to change the border of an element to CIELCh 52, 79.345, 17.459 is called "border". The border property can be set on classes, ids or directly on the HTML element.

This example shows the color as border, it can be applied via the CSS property "border" or "border-color".

```
.border, #border, table{ border:4px solid rgb(240, 30, 88) }
```

If only the border color should be changed use the property border-color.

```
.border{ border-color:rgb(240, 30, 88) }
```

If you want to add a box shadow in that color use:

Here you see how a box with a 4 pixel rgb(240, 30, 88) colored shadow looks like.

```
.boxshadow{ -moz-box-shadow:4px 4px 4px  
4px rgb(240, 30, 88); -webkit-box-  
shadow:4px 4px 4px 4px rgb(240, 30, 88);  
box-shadow:4px 4px 4px 4px rgb(240, 30,  
88) }
```

Background

The CSS property to change the background color of an element to CIELCh 52, 79.345, 17.459 is called "background". The background property can be set on classes, ids or directly on the HTML element.

```
.background, #background, body{  
background: rgb(240, 30, 88) }
```

If only the background color should be changed can be used:

```
.background{ background-color: rgb(240, 30,  
88) }
```

This example shows the color as background, it is applied via the CSS property "background".

To optimize and compress your CSS code, you can use our [online CSS compressor and optimizer](#) based on csstidy. If you want to create a linear or radial gradient as background or border, check our [CSS Gradient Generator](#).

Hey! You found this booklet interesting? Support Converting Colors with the new Membership Option!

The pro membership hides all ads, plus gives you double the colors in the color bucket, and more awesome pro features!

[Learn more, Memberships starting at \\$2.50/m!](#)

**Follow me
on Twitter!**

@ConvertingColor