

Converting Colors

CIELCh(53, 20.673, 65.703)

Have a look what the booklet for
CIELCh(53, 20.673, 65.703) contains.

CIELCh(53, 20.578, 66.279)	3
<i>Conversions</i>	4
<i>Details</i>	6
<i>Harmonies</i>	11
<i>Previews</i>	20
<i>Color Blindness Simulation</i>	23
<i>CSS Examples</i>	26

Color

CIELCh(53, 20.578, 66.279)

Conversions

Conversions Part 1

Format	Color
Hex	98795F
RGB	152, 121, 95
RGB Percent	60%, 47%, 37%
CMY	0.4054, 0.5269, 0.6288
CMYK	0.00, 0.20, 0.38, 0.41
HSL	27°, 23%, 48%
HSV	27°, 38%, 59%
XYZ	21.7210, 21.0462, 13.6619
YIQ	127.3050, 26.8220, -1.5140

Conversions

Conversions Part 2

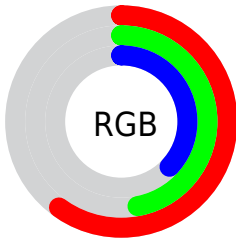
Format	Color
RYB	152, 143, 95
Decimal	9992543
CIELab	53.00, 8.28, 18.84
CIELCh	53, 20.578, 66.279
Yxy	21.0462, 0.3849, 0.3730
Android (android.graphics.Color)	4288182623 (0xFF98795F)
YUV	127.3050, -15.9264, 21.6575
Hunter-Lab	45.8761, 4.2315, 14.4567

Details

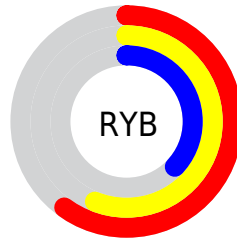
The CIELCh color **53, 20.578, 66.279** is a dark color, and the websafe version is hex **996666**. A complement of this color would be **51, 18.014, 256.462**, and the grayscale version is **53, 0.007, 296.813**.

A 20% lighter version of the original color is **73, 20.302, 65.634**, and **33, 20.444, 64.487** is the 20% darker color. If you saturate the color by 10%, you get **51, 26.761, 65.171**, and if you desaturate by 10%, it is **56, 14.697, 67.406**.

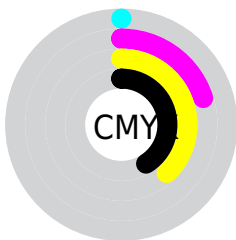
Distribution



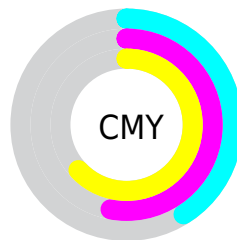
- Red (60%)
- Green (47%)
- Blue (37%)



- Red (60%)
- Yellow (56%)
- Blue (37%)



- Cyan (0%)
- Magenta (20%)
- Yellow (38%)
- Black (41%)



- Cyan (41%)
- Magenta (53%)
- Yellow (63%)

Brightness & Saturation Gradients

These gradients show how the CIELCh color 53, 20.578, 66.279 changes by changing the brightness by 10 percent. The first figure shows a shift by +10% for each color and the second figure -10%.

Similar to the brightness gradients but the following saturation gradients show a change of the CIELCh color 53, 20.578, 66.279 by changing the saturation by 10% instead.

■ 53, 20.578, 66.279

■ 53, 20.578, 66.279

■ 100, 20.578,
66.279

■ 43, 20.578, 66.279

■ 73, 20.578, 66.279

■ 33, 20.578, 66.279

■ 83, 20.578, 66.279

■ 23, 20.578, 66.279

■ 93, 20.578, 66.279

■ 13, 20.578, 66.279

■ 3, 20.578, 66.279

■ 0, 20.578, 66.279

■ 53, 20.578, 66.279

■ 53, 20.578, 66.279

■ 51, 26.761, 65.171

■ 56, 14.697, 67.406

■ 48, 33.214, 64.059

■ 58, 9.118, 68.525

■ 46, 39.834, 62.917

■ 61, 3.825, 69.606

■ 44, 46.392, 61.664

■ 63, 1.206, 251.082

■ 42, 52.422, 60.114

■ 66, 6.001, 251.964

■ 40, 57.440, 58.129

■ 69, 10.585,
253.013

■ 39, 58.746, 57.765

■ 71, 14.984,
254.045

■ 74, 19.218,
255.046

■ 77, 23.308,
256.010

Harmonies

Complementary

The Complementary color scheme is a pair of colors which are on the opposite of each other on the color wheel.



53, 20.578, 66.279



51, 18.014, 256.462

Rectangle

The Rectangle color scheme consists of four colors that form a rectangle on the color wheel.



53, 20.578, 66.279



53, 20.578, 116.279



53, 20.578, 246.279



53, 20.578, 296.279

Sweetspot

The Sweet Spot groups the original color and five complimentary colors.



53, 20.578, 66.285



76, 6.930, 69.223



47, 28.966, 344.393



40, 4.709, 69.090



90, 0.011, 296.813



42, 0.006, 296.813

Same Dimension

The Same Dimension uses a secret algorithm to generate beautiful new colors.



53, 20.578, 66.285



65, 31.117, 65.358



61, 29.919, 104.393



31, 2.890, 69.434



36, 55.403, 58.047



2, 3.051, 69.651

Inverse Universe

The Inverse Universe completely reimagines the original color for something new.



51, 18.014, 256.462



62, 26.338, 258.393



43, 32.526, 293.042



31, 2.813, 251.720



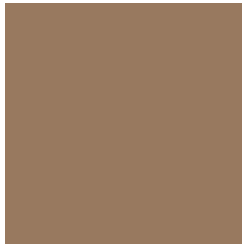
32, 41.501, 278.269



2, 3.081, 251.587

Previews

White Background



This preview shows how the CIELCh color 53, 20.578, 66.279 looks on a white background.

Color Contrast Check

Large Text (above 18pt) WCAG AA ✓ Pass

Any Text WCAG AA × Fail

Large Text (above 18pt) WCAG AAA × Fail

Any Text WCAG AAA × Fail

Black Background



This preview shows how the CIELCh color 53, 20.578, 66.279 looks on a black background.

Color Contrast Check

Large Text (above 18pt) WCAG AA ✓ Pass

Any Text WCAG AA ✓ Pass

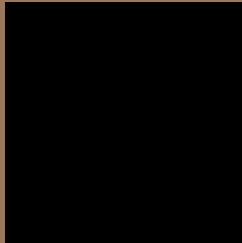
Large Text (above 18pt) WCAG AAA ✓ Pass

Any Text WCAG AAA × Fail

If you want to check with other color combinations, try the [Color Contrast Checker](#).

CIELCh 53, 20.578, 66.279

Background



This preview shows how black text looks on a background with the CIELCh color 53, 20.578, 66.279.



This preview shows how white text looks on a background with the CIELCh color 53, 20.578, 66.279.

Color Blindness Simulation

Color vision deficiency is a very complex topic, and I could not describe the different causes any better than Wikipedia does, so if you want to learn more, you should check out their [article about color blindness](#).

Dichromacy



Original Color

53, 20.578, 66.279

Protanopia

53, 17.554, 96.569

Deuteranopia

53, 20.563, 70.885



Tritanopia
53, 16.781, 3.548

Trichromacy



Original Color
53, 20.578, 66.279

Protanomaly
53, 18.139, 85.283

Deuteranomaly
53, 20.853, 69.927

Tritanomaly
53, 15.483, 29.541

Monochromacy



Original Color
53, 20.578, 66.279

Achromatopsia
53, 0.007, 296.813

Achromatomaly
53, 7.360, 70.984

CSS Examples

Text

The CSS property to change the color of the text to CIELCh 53, 20.578, 66.279 is called "color". The color property can be set on classes, ids or directly on the HTML element.

This example shows how text in the color `rgb(152, 121, 95)` looks like.

```
.text, #text, p{  
    color:rgb(152, 121, 95)  
}
```

If you want to add a text shadow in that color use the text-shadow property, you can generate a text shadow directly with our [CSS Text Shadow Generator](#).

Here you see how black text with a 4 pixel rgb(152, 121, 95) colored shadow looks like.

```
.shadow{ text-shadow: 4px 4px 2px rgb(152, 121, 95) }
```

Border

The CSS property to change the border of an element to CIELCh 53, 20.578, 66.279 is called "border". The border property can be set on classes, ids or directly on the HTML element.

This example shows the color as border, it can be applied via the CSS property "border" or "border-color".

```
.border, #border, table{ border:4px solid rgb(152, 121, 95) }
```

If only the border color should be changed use the property `border-color`.

```
.border{ border-color:rgb(152, 121, 95) }
```

If you want to add a box shadow in that color use:

Here you see how a box with a 4 pixel `rgb(152, 121, 95)` colored shadow looks like.

```
.boxshadow{ -moz-box-shadow:4px 4px 4px  
4px rgb(152, 121, 95); -webkit-box-  
shadow:4px 4px 4px 4px rgb(152, 121, 95);  
box-shadow:4px 4px 4px 4px rgb(152, 121,  
95) }
```

Background

The CSS property to change the background color of an element to CIELCh 53, 20.578, 66.279 is called "background". The background property can be set on classes, ids or directly on the HTML element.

```
.background, #background, body{  
background: rgb(152, 121, 95) }
```

If only the background color should be changed can be used:

```
.background{ background-color: rgb(152,  
121, 95) }
```

This example shows the color as background, it is applied via the CSS property "background".

To optimize and compress your CSS code, you can use our [online CSS compressor and optimizer](#) based on csstidy. If you want to create a linear or radial gradient as background or border, check our [CSS Gradient Generator](#).

Hey! You found this booklet interesting? Support Converting Colors with the new Membership Option!

The pro membership hides all ads, plus gives you double the colors in the color bucket, and more awesome pro features!

[Learn more, Memberships starting at \\$2.50/m!](#)

**Follow me
on Twitter!**

@ConvertingColor