

Converting Colors

CIELCh(53, 28.588, 52.732)

Have a look what the booklet for
CIELCh(53, 28.588, 52.732) contains.

CIELCh(53, 28.861, 53.358)	3
<i>Conversions</i>	4
<i>Details</i>	6
<i>Harmonies</i>	11
<i>Previews</i>	20
<i>Color Blindness Simulation</i>	23
<i>CSS Examples</i>	26

Color

CIELCh(53, 28.861, 53.358)

Conversions

Conversions Part 1

Format	Color
Hex	A77358
RGB	167, 115, 88
RGB Percent	65%, 45%, 35%
CMY	0.3467, 0.5505, 0.6563
CMYK	0.00, 0.31, 0.47, 0.35
HSL	21°, 31%, 50%
HSV	21°, 47%, 65%
XYZ	23.6845, 21.0462, 11.9695
YIQ	127.4700, 39.6590, 2.6270

Conversions

Conversions Part 2

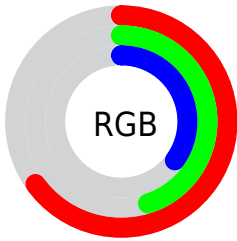
Format	Color
R_{YB}	167, 129, 88
Decimal	10974040
CIE Lab	53.00, 17.22, 23.16
CIE LCh	53, 28.861, 53.358
Yxy	21.0462, 0.4177, 0.3712
Android (android.graphics.Color)	4289164120 (0xFFA77358)
YUV	127.4700, -19.4587, 34.6678
Hunter-Lab	45.8761, 11.8710, 16.6440

Details

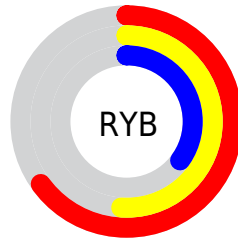
The CIELCh color **53, 28.861, 53.358** is a dark color, and the websafe version is hex **996633**. A complement of this color would be **56, 21.968, 243.482**, and the grayscale version is **53, 0.007, 296.813**.

A 20% lighter version of the original color is **73, 28.907, 53.344**, and **33, 28.628, 54.157** is the 20% darker color. If you saturate the color by 10%, you get **50, 36.188, 52.856**, and if you desaturate by 10%, it is **56, 21.964, 53.952**.

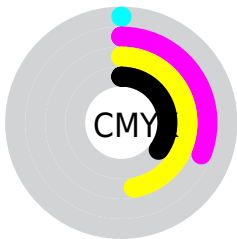
Distribution



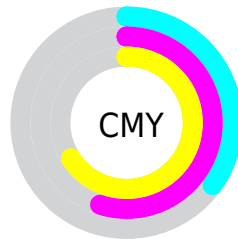
- Red (65%)
- Green (45%)
- Blue (35%)



- Red (65%)
- Yellow (51%)
- Blue (35%)



- Cyan (0%)
- Magenta (31%)
- Yellow (47%)
- Black (35%)



- Cyan (35%)
- Magenta (55%)
- Yellow (66%)

Brightness & Saturation Gradients

These gradients show how the CIELCh color 53, 28.861, 53.358 changes by changing the brightness by 10 percent. The first figure shows a shift by +10% for each color and the second figure -10%.

Similar to the brightness gradients but the following saturation gradients show a change of the CIELCh color 53, 28.861, 53.358 by changing the saturation by 10% instead.

■ 53, 28.861, 53.358

■ 53, 28.861, 53.358

■ 100, 28.861,
53.358

■ 43, 28.861, 53.358

■ 73, 28.861, 53.358

■ 33, 28.861, 53.358

■ 83, 28.861, 53.358

■ 23, 28.861, 53.358

■ 93, 28.861, 53.358

■ 13, 28.861, 53.358

■ 3, 28.861, 53.358

■ 0, 28.861, 53.358

■ 53, 28.861, 53.358

■ 53, 28.861, 53.358

■ 50, 36.188, 52.856

■ 56, 21.964, 53.952

■ 47, 43.861, 52.409

■ 59, 15.518, 54.615

45, 51.654, 51.942

63, 9.507, 55.334

42, 59.057, 51.243

66, 3.900, 56.053

40, 65.320, 50.044

69, 1.340, 237.288

40, 67.003, 49.878

73, 6.254, 237.871

76, 10.878,
238.677

79, 15.247,
239.497

83, 19.394,
240.309

Harmonies

Complementary

The Complementary color scheme is a pair of colors which are on the opposite of each other on the color wheel.



53, 28.861, 53.358



56, 21.968, 243.482

Rectangle

The Rectangle color scheme consists of four colors that form a rectangle on the color wheel.



53, 28.861, 53.358



53, 28.861, 103.358



53, 28.861, 233.358



53, 28.861, 283.358

Sweetspot

The Sweet Spot groups the original color and five complimentary colors.



53, 28.860, 53.363



81, 9.380, 55.564



48, 42.038, 339.444



42, 6.575, 55.411



94, 0.011, 296.813



46, 0.006, 296.813

Same Dimension

The Same Dimension uses a secret algorithm to generate beautiful new colors.



53, 28.860, 53.363



64, 44.628, 52.825



63, 36.405, 96.982



34, 3.033, 55.923



35, 61.182, 50.240



3, 5.392, 50.837

Inverse Universe

The Inverse Universe completely reimagines the original color for something new.



56, 21.968, 243.482



68, 31.567, 246.166



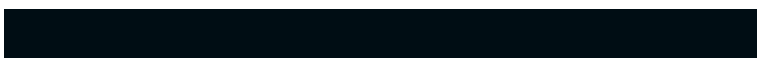
44, 39.345, 289.739



34, 2.903, 237.683



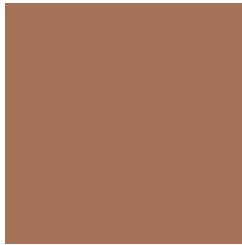
39, 34.683, 262.517



3, 5.497, 246.208

Previews

White Background



This preview shows how the CIELCh color 53, 28.861, 53.358 looks on a white background.

Color Contrast Check

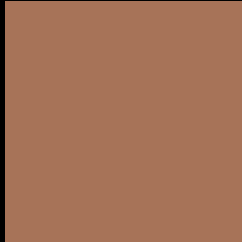
Large Text (above 18pt) WCAG AA ✓ Pass

Any Text WCAG AA × Fail

Large Text (above 18pt) WCAG AAA × Fail

Any Text WCAG AAA × Fail

Black Background



This preview shows how the CIELCh color 53, 28.861, 53.358 looks on a black background.

Color Contrast Check

Large Text (above 18pt) WCAG AA ✓ Pass

Any Text WCAG AA ✓ Pass

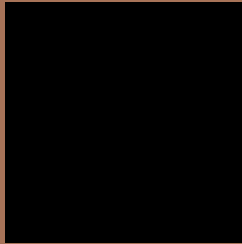
Large Text (above 18pt) WCAG AAA ✓ Pass

Any Text WCAG AAA × Fail

If you want to check with other color combinations, try the [Color Contrast Checker](#).

CIELCh 53, 28.861, 53.358

Background



This preview shows how black text looks on a background with the CIELCh color 53, 28.861, 53.358.



This preview shows how white text looks on a background with the CIELCh color 53, 28.861, 53.358.

Color Blindness Simulation

Color vision deficiency is a very complex topic, and I could not describe the different causes any better than Wikipedia does, so if you want to learn more, you should check out their [article about color blindness](#).

Dichromacy



Original Color

53, 28.861, 53.358

Protanopia

53, 19.873, 96.236

Deuteranopia

53, 24.819, 73.158



Tritanopia
53, 25.137, 10.859

Trichromacy



Original Color
53, 28.861, 53.358

Protanomaly
53, 21.444, 77.863

Deuteranomaly
53, 25.619, 65.579

Tritanomaly
53, 24.447, 27.535

Monochromacy



Original Color
53, 28.861, 53.358

Achromatopsia
53, 0.007, 296.813

Achromatomaly
53, 9.548, 56.951

CSS Examples

Text

The CSS property to change the color of the text to CIELCh 53, 28.861, 53.358 is called "color". The color property can be set on classes, ids or directly on the HTML element.

This example shows how text in the color `rgb(167, 115, 88)` looks like.

```
.text, #text, p{  
    color:rgb(167, 115, 88)  
}
```

If you want to add a text shadow in that color use the text-shadow property, you can generate a text shadow directly with our [CSS Text Shadow Generator](#).

Here you see how black text with a 4 pixel rgb(167, 115, 88) colored shadow looks like.

```
.shadow{ text-shadow: 4px 4px 2px rgb(167, 115, 88) }
```

Border

The CSS property to change the border of an element to CIELCh 53, 28.861, 53.358 is called "border". The border property can be set on classes, ids or directly on the HTML element.

This example shows the color as border, it can be applied via the CSS property "border" or "border-color".

```
.border, #border, table{ border:4px solid rgb(167, 115, 88) }
```

If only the border color should be changed use the property `border-color`.

```
.border{ border-color:rgb(167, 115, 88) }
```

If you want to add a box shadow in that color use:

Here you see how a box with a 4 pixel `rgb(167, 115, 88)` colored shadow looks like.

```
.boxshadow{ -moz-box-shadow:4px 4px 4px  
4px rgb(167, 115, 88); -webkit-box-  
shadow:4px 4px 4px 4px rgb(167, 115, 88);  
box-shadow:4px 4px 4px 4px rgb(167, 115,  
88) }
```

Background

The CSS property to change the background color of an element to CIELCh 53, 28.861, 53.358 is called "background". The background property can be set on classes, ids or directly on the HTML element.

```
.background, #background, body{  
background: rgb(167, 115, 88) }
```

If only the background color should be changed can be used:

```
.background{ background-color: rgb(167,  
115, 88) }
```

This example shows the color as background, it is applied via the CSS property "background".

To optimize and compress your CSS code, you can use our [online CSS compressor and optimizer](#) based on csstidy. If you want to create a linear or radial gradient as background or border, check our [CSS Gradient Generator](#).

Hey! You found this booklet interesting? Support Converting Colors with the new Membership Option!

The pro membership hides all ads, plus gives you double the colors in the color bucket, and more awesome pro features!

[Learn more, Memberships starting at \\$2.50/m!](#)

**Follow me
on Twitter!**

@ConvertingColor