

Converting Colors

CIELCh(53, 30.553, 21.098)

Have a look what the booklet for
CIELCh(53, 30.553, 21.098) contains.

CIELCh(53, 30.604, 21.131)	3
<i>Conversions</i>	4
<i>Details</i>	6
<i>Harmonies</i>	11
<i>Previews</i>	20
<i>Color Blindness Simulation</i>	23
<i>CSS Examples</i>	26

Color

CIELCh(53, 30.604, 21.131)

Conversions

Conversions Part 1

Format	Color
Hex	B26B6D
RGB	178, 107, 109
RGB Percent	70%, 42%, 43%
CMY	0.3024, 0.5808, 0.5730
CMYK	0.00, 0.40, 0.39, 0.30
HSL	358°, 32%, 56%
HSV	358°, 40%, 70%
XYZ	26.3343, 21.0462, 17.1131
YIQ	128.4570, 41.6740, 15.6740

Conversions

Conversions Part 2

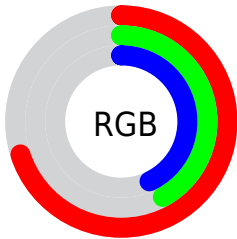
Format	Color
R _Y B	178, 107, 109
Decimal	11692909
CIE Lab	53.00, 28.55, 11.03
CIE LCh	53, 30.604, 21.131
Yxy	21.0462, 0.4083, 0.3263
Android (android.graphics.Color)	4289882989 (0xFFB26B6D)
YUV	128.4570, -9.5923, 43.4492
Hunter-Lab	45.8761, 22.1811, 9.9964

Details

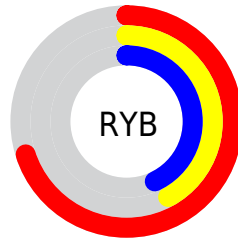
The CIELCh color **53, 30.604, 21.131** is a dark color, and the websafe version is hex **996666**. A complement of this color would be **68, 23.503, 194.802**, and the grayscale version is **54, 0.007, 296.813**.

A 20% lighter version of the original color is **73, 30.889, 21.291**, and **33, 30.647, 20.802** is the 20% darker color. If you saturate the color by 10%, you get **49, 39.369, 22.974**, and if you desaturate by 10%, it is **58, 22.191, 19.708**.

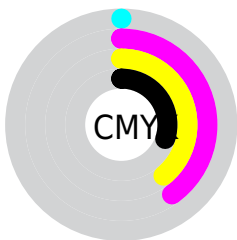
Distribution



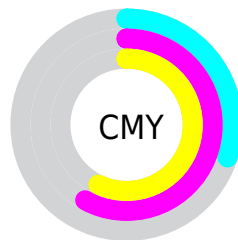
- Red (70%)
- Green (42%)
- Blue (43%)



- Red (70%)
- Yellow (42%)
- Blue (43%)



- Cyan (0%)
- Magenta (40%)
- Yellow (39%)
- Black (30%)



- Cyan (30%)
- Magenta (58%)
- Yellow (57%)


Brightness & Saturation Gradients

These gradients show how the CIELCh color 53, 30.604, 21.131 changes by changing the brightness by 10 percent. The first figure shows a shift by +10% for each color and the second figure -10%.

Similar to the brightness gradients but the following saturation gradients show a change of the CIELCh color 53, 30.604, 21.131 by changing the saturation by 10% instead.

 53, 30.604, 21.131

 53, 30.604, 21.131

 100, 30.604,
21.131

 43, 30.604, 21.131

 73, 30.604, 21.131

 33, 30.604, 21.131

 83, 30.604, 21.131

 23, 30.604, 21.131

 93, 30.604, 21.131

 13, 30.604, 21.131

 3, 30.604, 21.131

 0, 30.604, 21.131

 53, 30.604, 21.131

 53, 30.604, 21.131

 49, 39.369, 22.974

 58, 22.191, 19.708

 45, 48.295, 25.337

 62, 14.253, 18.589

42, 57.109, 28.316

67, 6.834, 17.681

39, 65.470, 31.884

73, 0.063, 205.089

38, 72.853, 35.695

78, 6.464, 196.582

37, 78.479, 38.782

83, 12.412,
196.088

37, 78.532, 38.809

88, 17.953,
195.698

93, 23.133,
195.375

95, 24.584,
197.902

Harmonies

Complementary

The Complementary color scheme is a pair of colors which are on the opposite of each other on the color wheel.



53, 30.604, 21.131



68, 23.503, 194.802

Rectangle

The Rectangle color scheme consists of four colors that form a rectangle on the color wheel.



53, 30.604, 21.131



53, 30.604, 71.131



53, 30.604, 201.131



53, 30.604, 251.131

Sweetspot

The Sweet Spot groups the original color and five complimentary colors.



53, 30.602, 21.135



84, 10.367, 17.878



55, 46.819, 325.568



44, 6.965, 17.990



96, 0.011, 296.813



49, 0.007, 296.813

Same Dimension

The Same Dimension uses a secret algorithm to generate beautiful new colors.



53, 30.602, 21.135



64, 46.872, 22.753



61, 25.159, 67.058



35, 3.911, 17.632



31, 69.883, 38.395



2, 9.164, 17.595

Inverse Universe

The Inverse Universe completely reimagines the original color for something new.



53, 30.602, 21.135



64, 46.872, 22.753



59, 21.942, 258.339



35, 3.911, 17.632



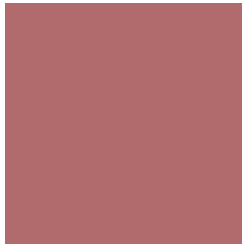
31, 69.883, 38.395



2, 9.164, 17.595

Previews

White Background



This preview shows how the CIELCh color 53, 30.604, 21.131 looks on a white background.

Color Contrast Check

Large Text (above 18pt) WCAG AA ✓ Pass

Any Text WCAG AA ✗ Fail

Large Text (above 18pt) WCAG AAA ✗ Fail

Any Text WCAG AAA ✗ Fail

Black Background



This preview shows how the CIE LCh color 53, 30.604, 21.131 looks on a black background.

Color Contrast Check

Large Text (above 18pt) WCAG AA ✓ Pass

Any Text WCAG AA ✓ Pass

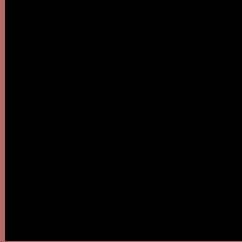
Large Text (above 18pt) WCAG AAA ✓ Pass

Any Text WCAG AAA × Fail

If you want to check with other color combinations, try the [Color Contrast Checker](#).

CIELCh 53, 30.604, 21.131

Background



This preview shows how black text looks on a background with the CIELCh color 53, 30.604, 21.131.

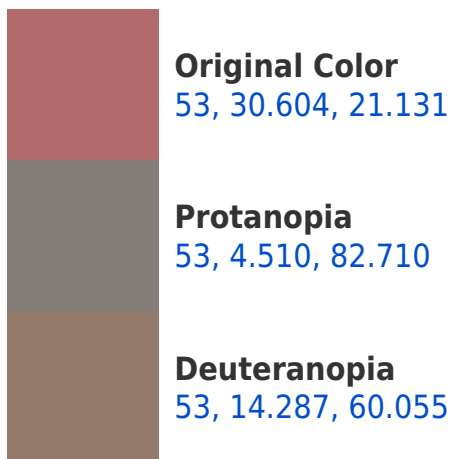


This preview shows how white text looks on a background with the CIELCh color 53, 30.604, 21.131.

Color Blindness Simulation

Color vision deficiency is a very complex topic, and I could not describe the different causes any better than Wikipedia does, so if you want to learn more, you should check out their [article about color blindness](#).

Dichromacy





Tritanopia
53, 30.757, 14.962

Trichromacy



Original Color
53, 30.604, 21.131

Protanomaly
53, 12.456, 31.295

Deuteranomaly
53, 18.815, 38.854

Tritanomaly
53, 30.822, 17.073

Monochromacy



Original Color
53, 30.604, 21.131

Achromatopsia
54, 0.007, 296.813

Achromatomaly
53, 10.757, 17.541

CSS Examples

Text

The CSS property to change the color of the text to CIELCh 53, 30.604, 21.131 is called "color". The color property can be set on classes, ids or directly on the HTML element.

This example shows how text in the color `rgb(178, 107, 109)` looks like.

```
.text, #text, p{  
    color:rgb(178, 107, 109)  
}
```

If you want to add a text shadow in that color use the text-shadow property, you can generate a text shadow directly with our [CSS Text Shadow Generator](#).

Here you see how black text with a 4 pixel rgb(178, 107, 109) colored shadow looks like.

```
.shadow{ text-shadow: 4px 4px 2px rgb(178, 107, 109) }
```

Border

The CSS property to change the border of an element to CIELCh 53, 30.604, 21.131 is called "border". The border property can be set on classes, ids or directly on the HTML element.

This example shows the color as border, it can be applied via the CSS property "border" or "border-color".

```
.border, #border, table{ border:4px solid rgb(178, 107, 109) }
```

If only the border color should be changed use the property `border-color`.

```
.border{ border-color:rgb(178, 107, 109) }
```

If you want to add a box shadow in that color use:

Here you see how a box with a 4 pixel `rgb(178, 107, 109)` colored shadow looks like.

```
.boxshadow{ -moz-box-shadow:4px 4px 4px  
4px rgb(178, 107, 109); -webkit-box-  
shadow:4px 4px 4px 4px rgb(178, 107, 109);  
box-shadow:4px 4px 4px 4px rgb(178, 107,  
109) }
```

Background

The CSS property to change the background color of an element to CIELCh 53, 30.604, 21.131 is called "background". The background property can be set on classes, ids or directly on the HTML element.

```
.background, #background, body{  
background: rgb(178, 107, 109) }
```

If only the background color should be changed can be used:

```
.background{ background-color: rgb(178,  
107, 109) }
```

This example shows the color as background, it is applied via the CSS property "background".

To optimize and compress your CSS code, you can use our [online CSS compressor and optimizer](#) based on csstidy. If you want to create a linear or radial gradient as background or border, check our [CSS Gradient Generator](#).

Hey! You found this booklet interesting? Support Converting Colors with the new Membership Option!

The pro membership hides all ads, plus gives you double the colors in the color bucket, and more awesome pro features!

[Learn more, Memberships starting at \\$2.50/m!](#)

**Follow me
on Twitter!**

@ConvertingColor