

Converting Colors

CIELCh(53, 37.018, 57.238)

Have a look what the booklet for
CIELCh(53, 37.018, 57.238) contains.

CIELCh(53, 36.890, 56.906)	3
<i>Conversions</i>	4
<i>Details</i>	6
<i>Harmonies</i>	11
<i>Previews</i>	20
<i>Color Blindness Simulation</i>	23
<i>CSS Examples</i>	26

Color

CIELCh(53, 36.890, 56.906)

Conversions

Conversions Part 1

Format	Color
Hex	AD704A
RGB	173, 112, 74
RGB Percent	68%, 44%, 29%
CMY	0.3206, 0.5599, 0.7090
CMYK	0.00, 0.35, 0.57, 0.32
HSL	23°, 40%, 49%
HSV	23°, 57%, 68%
XYZ	24.3495, 21.0462, 9.2941
YIQ	125.9070, 48.5540, 1.1140

Conversions

Conversions Part 2

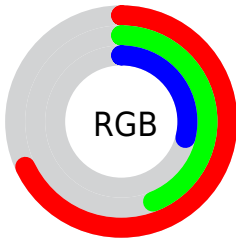
Format	Color
RYB	173, 136, 74
Decimal	11366474
CIELab	53.00, 20.14, 30.91
CIELCh	53, 36.890, 56.906
Yxy	21.0462, 0.4452, 0.3848
Android (android.graphics.Color)	4289556554 (0xFFAD704A)
YUV	125.9070, -25.5902, 41.3006
Hunter-Lab	45.8761, 14.4587, 20.1017

Details

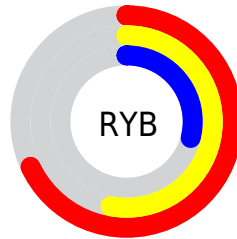
The CIELCh color **53, 36.890, 56.906** is a dark color, and the websafe version is hex **996633**. A complement of this color would be **54, 27.400, 252.093**, and the grayscale version is **53, 0.007, 296.813**.

A 20% lighter version of the original color is **73, 36.992, 57.208**, and **33, 36.991, 57.473** is the 20% darker color. If you saturate the color by 10%, you get **50, 44.606, 56.163**, and if you desaturate by 10%, it is **56, 29.478, 57.680**.

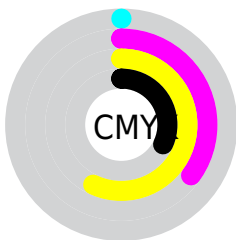
Distribution



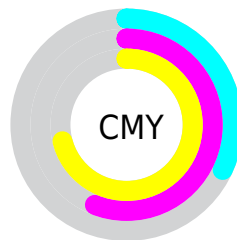
- Red (68%)
- Green (44%)
- Blue (29%)



- Red (68%)
- Yellow (53%)
- Blue (29%)



- Cyan (0%)
- Magenta (35%)
- Yellow (57%)
- Black (32%)



- Cyan (32%)
- Magenta (56%)
- Yellow (71%)

Brightness & Saturation Gradients

These gradients show how the CIELCh color 53, 36.890, 56.906 changes by changing the brightness by 10 percent. The first figure shows a shift by +10% for each color and the second figure -10%.

Similar to the brightness gradients but the following saturation gradients show a change of the CIELCh color 53, 36.890, 56.906 by changing the saturation by 10% instead.

■ 53, 36.890, 56.906

■ 53, 36.890, 56.906

■ 100, 36.890,
56.906

■ 43, 36.890, 56.906

■ 73, 36.890, 56.906

■ 33, 36.890, 56.906

■ 83, 36.890, 56.906

■ 23, 36.890, 56.906

■ 93, 36.890, 56.906

■ 13, 36.890, 56.906

■ 3, 36.890, 56.906

■ 0, 36.890, 56.906

■ 53, 36.890, 56.906

■ 53, 36.890, 56.906

■ 50, 44.606, 56.163

■ 56, 29.478, 57.680

■ 48, 52.385, 55.353

■ 59, 22.469, 58.499

45, 59.696, 54.272

62, 15.884, 59.366

43, 65.744, 52.627

65, 9.713, 60.265

43, 67.471, 52.275

68, 3.926, 61.145

72, 1.513, 242.476

75, 6.640, 243.225

78, 11.491,
244.150

82, 16.100,
245.074

Harmonies

Complementary

The Complementary color scheme is a pair of colors which are on the opposite of each other on the color wheel.



53, 36.890, 56.906



54, 27.400, 252.093

Rectangle

The Rectangle color scheme consists of four colors that form a rectangle on the color wheel.



53, 36.890, 56.906



53, 36.890, 106.906



53, 36.890, 236.906



53, 36.890, 286.906

Sweetspot

The Sweet Spot groups the original color and five complimentary colors.



53, 36.889, 56.910



82, 11.876, 60.253



46, 49.670, 343.113



43, 7.983, 60.079



95, 0.011, 296.813



47, 0.006, 296.813

Same Dimension

The Same Dimension uses a secret algorithm to generate beautiful new colors.



53, 36.889, 56.910



63, 56.986, 55.931



66, 46.764, 98.860



35, 3.125, 60.966



37, 60.588, 52.718



3, 6.389, 53.175

Inverse Universe

The Inverse Universe completely reimagines the original color for something new.



54, 27.400, 252.093



65, 39.277, 256.435



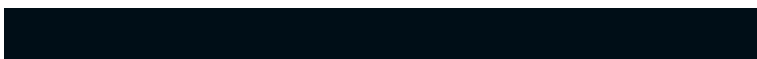
40, 53.104, 294.358



35, 3.007, 242.987



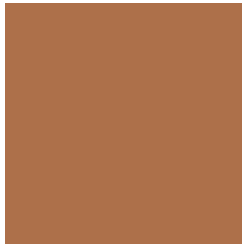
38, 38.022, 269.159



3, 6.746, 253.183

Previews

White Background



This preview shows how the CIELCh color 53, 36.890, 56.906 looks on a white background.

Color Contrast Check

Large Text (above 18pt) WCAG AA ✓ Pass

Any Text WCAG AA × Fail

Large Text (above 18pt) WCAG AAA × Fail

Any Text WCAG AAA × Fail

Black Background



This preview shows how the CIELCh color 53, 36.890, 56.906 looks on a black background.

Color Contrast Check

Large Text (above 18pt) WCAG AA ✓ Pass

Any Text WCAG AA ✓ Pass

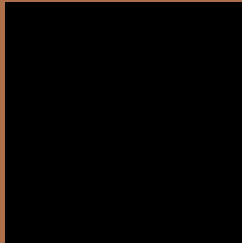
Large Text (above 18pt) WCAG AAA ✓ Pass

Any Text WCAG AAA × Fail

If you want to check with other color combinations, try the [Color Contrast Checker](#).

CIELCh 53, 36.890, 56.906

Background



This preview shows how black text looks on a background with the CIELCh color 53, 36.890, 56.906.



This preview shows how white text looks on a background with the CIELCh color 53, 36.890, 56.906.

Color Blindness Simulation

Color vision deficiency is a very complex topic, and I could not describe the different causes any better than Wikipedia does, so if you want to learn more, you should check out their [article about color blindness](#).

Dichromacy



Original Color

53, 36.890, 56.906

Protanopia

53, 27.208, 96.256

Deuteranopia

53, 32.510, 77.479



Tritanopia
53, 29.444, 14.373

Trichromacy



Original Color
53, 36.890, 56.906

Protanomaly
53, 28.755, 79.354

Deuteranomaly
53, 33.562, 69.200

Tritanomaly
53, 29.893, 32.536

Monochromacy



Original Color
53, 36.890, 56.906

Achromatopsia
53, 0.007, 296.813

Achromatomaly
52, 12.493, 60.152

CSS Examples

Text

The CSS property to change the color of the text to CIELCh 53, 36.890, 56.906 is called "color". The color property can be set on classes, ids or directly on the HTML element.

This example shows how text in the color `rgb(173, 112, 74)` looks like.

```
.text, #text, p{  
    color:rgb(173, 112, 74)  
}
```

If you want to add a text shadow in that color use the text-shadow property, you can generate a text shadow directly with our [CSS Text Shadow Generator](#).

Here you see how black text with a 4 pixel rgb(173, 112, 74) colored shadow looks like.

```
.shadow{ text-shadow: 4px 4px 2px rgb(173, 112, 74) }
```

Border

The CSS property to change the border of an element to CIELCh 53, 36.890, 56.906 is called "border". The border property can be set on classes, ids or directly on the HTML element.

This example shows the color as border, it can be applied via the CSS property "border" or "border-color".

```
.border, #border, table{ border:4px solid rgb(173, 112, 74) }
```

If only the border color should be changed use the property border-color.

```
.border{ border-color:rgb(173, 112, 74) }
```

If you want to add a box shadow in that color use:

Here you see how a box with a 4 pixel rgb(173, 112, 74) colored shadow looks like.

```
.boxshadow{ -moz-box-shadow:4px 4px 4px  
4px rgb(173, 112, 74); -webkit-box-  
shadow:4px 4px 4px 4px rgb(173, 112, 74);  
box-shadow:4px 4px 4px 4px rgb(173, 112,  
74) }
```

Background

The CSS property to change the background color of an element to CIELCh 53, 36.890, 56.906 is called "background". The background property can be set on classes, ids or directly on the HTML element.

```
.background, #background, body{  
background: rgb(173, 112, 74) }
```

If only the background color should be changed can be used:

```
.background{ background-color: rgb(173,  
112, 74) }
```

This example shows the color as background, it is applied via the CSS property "background".

To optimize and compress your CSS code, you can use our [online CSS compressor and optimizer](#) based on csstidy. If you want to create a linear or radial gradient as background or border, check our [CSS Gradient Generator](#).

Hey! You found this booklet interesting? Support Converting Colors with the new Membership Option!

The pro membership hides all ads, plus gives you double the colors in the color bucket, and more awesome pro features!

[Learn more, Memberships starting at \\$2.50/m!](#)

**Follow me
on Twitter!**

@ConvertingColor