

Converting Colors

CIELCh(53, 74.585, 7.930)

Have a look what the booklet for
CIELCh(53, 74.585, 7.930) contains.

CIELCh(53, 74.405, 8.062)	3
<i>Conversions</i>	4
<i>Details</i>	6
<i>Harmonies</i>	11
<i>Previews</i>	20
<i>Color Blindness Simulation</i>	23
<i>CSS Examples</i>	26

Color

CIELCh(53, 74.405, 8.062)

Conversions

Conversions Part 1

Format	Color
Hex	ED2C70
RGB	237, 44, 112
RGB Percent	93%, 17%, 44%
CMY	0.0696, 0.8261, 0.5600
CMYK	0.00, 0.81, 0.53, 0.07
HSL	339°, 84%, 55%
HSV	339°, 81%, 93%
XYZ	38.8547, 21.0462, 17.3991
YIQ	109.4590, 93.2000, 62.0640

Conversions

Conversions Part 2

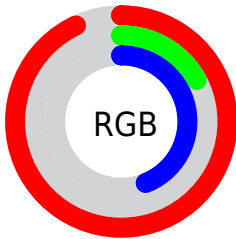
Format	Color
R_{YB}	237, 44, 112
Decimal	15543408
CIE Lab	53.00, 73.67, 10.43
CIE LCh	53, 74.405, 8.062
Yxy	21.0462, 0.5026, 0.2723
Android (android.graphics.Color)	4293733488 (0xFFED2C70)
YUV	109.4590, 1.2527, 111.8535
Hunter-Lab	45.8761, 70.8969, 9.6268

Details

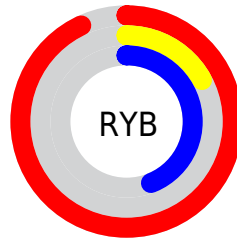
The CIELCh color **53, 74.405, 8.062** is a dark color, and the websafe version is hex **CC0066**. The color can be described as dark washed rose. A complement of this color would be **84, 64.148, 161.664**, and the grayscale version is **46, 0.006, 296.813**.

A 20% lighter version of the original color is **66, 59.646, 359.729**, and **37, 64.002, 13.962** is the 20% darker color. If you saturate the color by 10%, you get **51, 78.770, 12.650**, and if you desaturate by 10%, it is **56, 68.247, 4.408**.

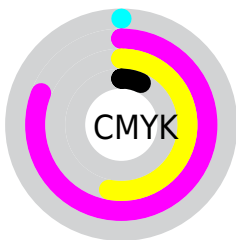
Distribution



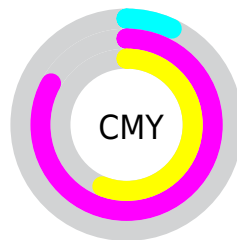
- Red (93%)
- Green (17%)
- Blue (44%)



- Red (93%)
- Yellow (17%)
- Blue (44%)



- Cyan (0%)
- Magenta (81%)
- Yellow (53%)
- Black (7%)




- Cyan (7%)
- Magenta (83%)
- Yellow (56%)

Brightness & Saturation Gradients

These gradients show how the CIELCh color 53, 74.405, 8.062 changes by changing the brightness by 10 percent. The first figure shows a shift by +10% for each color and the second figure -10%.

Similar to the brightness gradients but the following saturation gradients show a change of the CIELCh color 53, 74.405, 8.062 by changing the saturation by 10% instead.

 53, 74.405, 8.062  53, 74.405, 8.062

 100, 74.405, 8.062  43, 74.405, 8.062

 73, 74.405, 8.062  33, 74.405, 8.062

 83, 74.405, 8.062  23, 74.405, 8.062

 93, 74.405, 8.062  13, 74.405, 8.062

 3, 74.405, 8.062

 0, 74.405, 8.062

 53, 74.405, 8.062  53, 74.405, 8.062

 51, 78.770, 12.650  56, 68.247, 4.408

 50, 81.585, 17.282  60, 60.413, 1.532

64, 51.309,
359.255

69, 41.431,
357.419

75, 31.216,
355.905

81, 20.989,
354.623

87, 10.960,
353.506

93, 1.251, 352.179

99, 6.569, 179.163

Harmonies

Complementary

The Complementary color scheme is a pair of colors which are on the opposite of each other on the color wheel.



53, 74.405, 8.062



84, 64.148, 161.664

Rectangle

The Rectangle color scheme consists of four colors that form a rectangle on the color wheel.



53, 74.405, 8.062



53, 74.405, 58.062



53, 74.405, 188.062



53, 74.405, 238.062

Sweetspot

The Sweet Spot groups the original color and five complimentary colors.



53, 74.401, 8.064



84, 25.160, 354.961



47, 105.307, 316.177



43, 17.362, 355.415



0, 0.000, 0.000



53, 0.007, 296.813

Same Dimension

The Same Dimension uses a secret algorithm to generate beautiful new colors.



53, 74.401, 8.064



54, 85.564, 16.437



55, 80.884, 39.289



47, 5.534, 353.312



39, 67.078, 16.283



8, 28.760, 6.956

Inverse Universe

The Inverse Universe completely reimagines the original color for something new.



53, 74.401, 8.064



54, 85.564, 16.437



78, 40.088, 217.304



47, 5.534, 353.312



39, 67.078, 16.283



8, 28.760, 6.956

Previews

White Background



This preview shows how the CIELCh color 53, 74.405, 8.062 looks on a white background.

Color Contrast Check

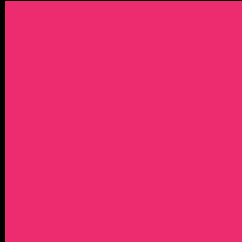
Large Text (above 18pt) WCAG AA ✓ Pass

Any Text WCAG AA ✗ Fail

Large Text (above 18pt) WCAG AAA ✗ Fail

Any Text WCAG AAA ✗ Fail

Black Background



This preview shows how the CIELCh color 53, 74.405, 8.062 looks on a black background.

Color Contrast Check

Large Text (above 18pt) WCAG AA ✓ Pass

Any Text WCAG AA ✓ Pass

Large Text (above 18pt) WCAG AAA ✓ Pass

Any Text WCAG AAA × Fail

If you want to check with other color combinations, try the [Color Contrast Checker](#).

CIELCh 53, 74.405, 8.062

Background



This preview shows how black text looks on a background with the CIELCh color 53, 74.405, 8.062.



This preview shows how white text looks on a background with the CIELCh color 53, 74.405, 8.062.

Color Blindness Simulation

Color vision deficiency is a very complex topic, and I could not describe the different causes any better than Wikipedia does, so if you want to learn more, you should check out their [article about color blindness](#).

Dichromacy



Original Color

53, 74.405, 8.062

Protanopia

53, 16.250, 285.819

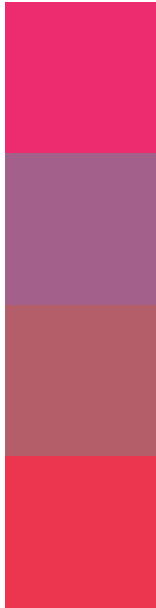
Deuteranopia

53, 15.865, 63.375



Tritanopia
53, 77.709, 31.594

Trichromacy



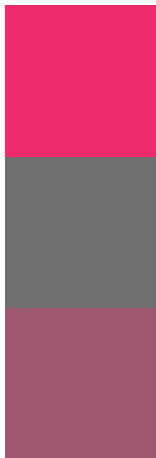
Original Color
53, 74.405, 8.062

Protanomaly
50, 35.537, 340.036

Deuteranomaly
50, 37.133, 14.215

Tritanomaly
53, 74.961, 23.341

Monochromacy



Original Color
53, 74.405, 8.062

Achromatopsia
46, 0.006, 296.813

Achromatomaly
45, 32.065, 357.431

CSS Examples

Text

The CSS property to change the color of the text to CIELCh 53, 74.405, 8.062 is called "color". The color property can be set on classes, ids or directly on the HTML element.

This example shows how text in the color `rgb(237, 44, 112)` looks like.

```
.text, #text, p{  
    color:rgb(237, 44, 112)  
}
```

If you want to add a text shadow in that color use the text-shadow property, you can generate a text shadow directly with our [CSS Text Shadow Generator](#).

Here you see how black text with a 4 pixel rgb(237, 44, 112) colored shadow looks like.

```
.shadow{ text-shadow: 4px 4px 2px rgb(237, 44, 112) }
```

Border

The CSS property to change the border of an element to CIELCh 53, 74.405, 8.062 is called "border". The border property can be set on classes, ids or directly on the HTML element.

This example shows the color as border, it can be applied via the CSS property "border" or "border-color".

```
.border, #border, table{ border:4px solid rgb(237, 44, 112) }
```

If only the border color should be changed use the property `border-color`.

```
.border{ border-color:rgb(237, 44, 112) }
```

If you want to add a box shadow in that color use:

Here you see how a box with a 4 pixel `rgb(237, 44, 112)` colored shadow looks like.

```
.boxshadow{ -moz-box-shadow:4px 4px 4px  
4px rgb(237, 44, 112); -webkit-box-  
shadow:4px 4px 4px 4px rgb(237, 44, 112);  
box-shadow:4px 4px 4px 4px rgb(237, 44,  
112) }
```

Background

The CSS property to change the background color of an element to CIELCh 53, 74.405, 8.062 is called "background". The background property can be set on classes, ids or directly on the HTML element.

```
.background, #background, body{  
background: rgb(237, 44, 112) }
```

If only the background color should be changed can be used:

```
.background{ background-color: rgb(237, 44,  
112) }
```

This example shows the color as background, it is applied via the CSS property "background".

To optimize and compress your CSS code, you can use our [online CSS compressor and optimizer](#) based on csstidy. If you want to create a linear or radial gradient as background or border, check our [CSS Gradient Generator](#).

Hey! You found this booklet interesting? Support Converting Colors with the new Membership Option!

The pro membership hides all ads, plus gives you double the colors in the color bucket, and more awesome pro features!

[Learn more, Memberships starting at \\$2.50/m!](#)

**Follow me
on Twitter!**

@ConvertingColor