

Converting Colors

CIELCh(53, 77.827, 17.512)

Have a look what the booklet for
CIELCh(53, 77.827, 17.512) contains.

CIELCh(53, 77.776, 17.372)	3
<i>Conversions</i>	4
<i>Details</i>	6
<i>Harmonies</i>	11
<i>Previews</i>	20
<i>Color Blindness Simulation</i>	23
<i>CSS Examples</i>	26

Color

CIELCh(53, 77.776, 17.372)

Conversions

Conversions Part 1

Format	Color
Hex	F1285B
RGB	241, 40, 91
RGB Percent	95%, 16%, 36%
CMY	0.0539, 0.8417, 0.6424
CMYK	0.00, 0.83, 0.62, 0.05
HSL	345°, 88%, 55%
HSV	345°, 83%, 95%
XYZ	39.0304, 21.0462, 11.9454
YIQ	105.9130, 103.4250, 58.4730

Conversions

Conversions Part 2

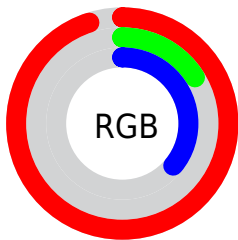
Format	Color
R_{YB}	241, 40, 91
Decimal	15804507
CIE _{Lab}	53.00, 74.23, 23.22
CIE _{LCh}	53, 77.776, 17.372
Yxy	21.0462, 0.5419, 0.2922
Android (android.graphics.Color)	4293994587 (0xFFFF1285B)
YUV	105.9130, -7.3521, 118.4713
Hunter-Lab	45.8761, 71.5808, 16.6752

Details

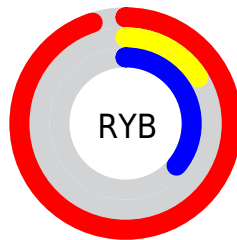
The CIELCh color **53, 77.776, 17.372** is a dark color, and the websafe version is hex **FF3366**. The color can be described as dark washed red. A complement of this color would be **86, 59.083, 168.786**, and the grayscale version is **45, 0.006, 296.813**.

A 20% lighter version of the original color is **65, 59.303, 10.662**, and **37, 68.011, 24.442** is the 20% darker color. If you saturate the color by 10%, you get **51, 83.462, 22.532**, and if you desaturate by 10%, it is **56, 70.730, 13.104**.

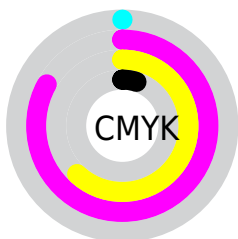
Distribution



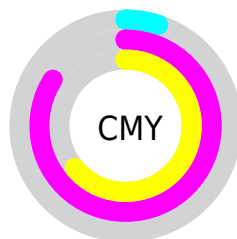
- Red (95%)
- Green (16%)
- Blue (36%)



- Red (95%)
- Yellow (16%)
- Blue (36%)



- Cyan (0%)
- Magenta (83%)
- Yellow (62%)
- Black (5%)



- Cyan (5%)
- Magenta (84%)
- Yellow (64%)

Brightness & Saturation Gradients

These gradients show how the CIELCh color 53, 77.776, 17.372 changes by changing the brightness by 10 percent. The first figure shows a shift by +10% for each color and the second figure -10%.

Similar to the brightness gradients but the following saturation gradients show a change of the CIELCh color 53, 77.776, 17.372 by changing the saturation by 10% instead.

 53, 77.776, 17.372

 53, 77.776, 17.372

 100, 77.776,
17.372

 43, 77.776, 17.372

 73, 77.776, 17.372

 33, 77.776, 17.372

 83, 77.776, 17.372

 23, 77.776, 17.372

 93, 77.776, 17.372

 13, 77.776, 17.372

 3, 77.776, 17.372

 0, 77.776, 17.372

 53, 77.776, 17.372

 53, 77.776, 17.372

 51, 83.462, 22.532

 56, 70.730, 13.104

 51, 86.867, 26.269

 59, 62.325, 9.703

64, 52.868, 7.025

69, 42.797, 4.899

75, 32.521, 3.184

81, 22.346, 1.770

87, 12.470, 0.569

93, 3.000, 359.416

99, 4.831, 189.495

Harmonies

Complementary

The Complementary color scheme is a pair of colors which are on the opposite of each other on the color wheel.



53, 77.776, 17.372



86, 59.083, 168.786

Rectangle

The Rectangle color scheme consists of four colors that form a rectangle on the color wheel.



53, 77.776, 17.372



53, 77.776, 67.372



53, 77.776, 197.372



53, 77.776, 247.372

Sweetspot

The Sweet Spot groups the original color and five complimentary colors.



53, 77.772, 17.374



84, 25.206, 2.008



50, 107.127, 319.133



42, 17.309, 2.493



0, 0.000, 0.000



53, 0.007, 296.813

Same Dimension

The Same Dimension uses a secret algorithm to generate beautiful new colors.



53, 77.772, 17.374



54, 90.713, 26.454



58, 80.091, 44.500



47, 5.268, 0.150



38, 70.241, 25.197



8, 28.864, 12.968

Inverse Universe

The Inverse Universe completely reimagines the original color for something new.



53, 77.772, 17.374



54, 90.713, 26.454



73, 40.722, 236.597



47, 5.268, 0.150



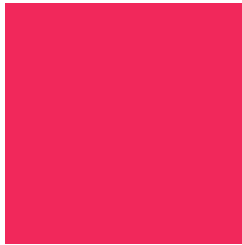
38, 70.241, 25.197



8, 28.864, 12.968

Previews

White Background



This preview shows how the CIELCh color 53, 77.776, 17.372 looks on a white background.

Color Contrast Check

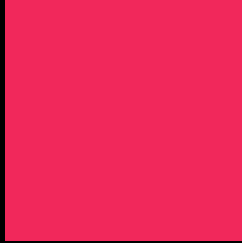
Large Text (above 18pt) WCAG AA ✓ Pass

Any Text WCAG AA ✗ Fail

Large Text (above 18pt) WCAG AAA ✗ Fail

Any Text WCAG AAA ✗ Fail

Black Background



This preview shows how the CIELCh color 53, 77.776, 17.372 looks on a black background.

Color Contrast Check

Large Text (above 18pt) WCAG AA ✓ Pass

Any Text WCAG AA ✓ Pass

Large Text (above 18pt) WCAG AAA ✓ Pass

Any Text WCAG AAA × Fail

If you want to check with other color combinations, try the [Color Contrast Checker](#).

CIELCh 53, 77.776, 17.372

Background



This preview shows how black text looks on a background with the CIELCh color 53, 77.776, 17.372.



This preview shows how white text looks on a background with the CIELCh color 53, 77.776, 17.372.

Color Blindness Simulation

Color vision deficiency is a very complex topic, and I could not describe the different causes any better than Wikipedia does, so if you want to learn more, you should check out their [article about color blindness](#).

Dichromacy



Original Color

53, 77.776, 17.372

Protanopia

53, 1.675, 335.670

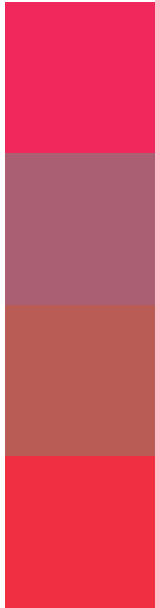
Deuteranopia

53, 27.543, 75.126



Tritanopia
53, 83.687, 33.720

Trichromacy



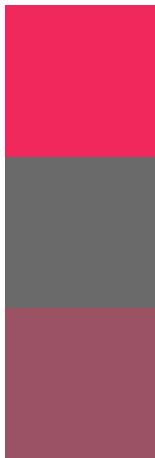
Original Color
53, 77.776, 17.372

Protanomaly
49, 32.921, 3.856

Deuteranomaly
50, 42.651, 30.274

Tritanomaly
53, 80.635, 28.048

Monochromacy



Original Color
53, 77.776, 17.372

Achromatopsia
45, 0.006, 296.813

Achromatomaly
44, 32.602, 4.828

CSS Examples

Text

The CSS property to change the color of the text to CIELCh 53, 77.776, 17.372 is called "color". The color property can be set on classes, ids or directly on the HTML element.

This example shows how text in the color `rgb(241, 40, 91)` looks like.

```
.text, #text, p{  
    color:rgb(241, 40, 91)  
}
```

If you want to add a text shadow in that color use the text-shadow property, you can generate a text shadow directly with our [CSS Text Shadow Generator](#).

Here you see how black text with a 4 pixel rgb(241, 40, 91) colored shadow looks like.

```
.shadow{ text-shadow: 4px 4px 2px rgb(241, 40, 91) }
```

Border

The CSS property to change the border of an element to CIELCh 53, 77.776, 17.372 is called "border". The border property can be set on classes, ids or directly on the HTML element.

This example shows the color as border, it can be applied via the CSS property "border" or "border-color".

```
.border, #border, table{ border:4px solid rgb(241, 40, 91) }
```

If only the border color should be changed use the property border-color.

```
.border{ border-color:rgb(241, 40, 91) }
```

If you want to add a box shadow in that color use:

Here you see how a box with a 4 pixel rgb(241, 40, 91) colored shadow looks like.

```
.boxshadow{ -moz-box-shadow:4px 4px 4px  
4px rgb(241, 40, 91); -webkit-box-  
shadow:4px 4px 4px 4px rgb(241, 40, 91);  
box-shadow:4px 4px 4px 4px rgb(241, 40,  
91) }
```

Background

The CSS property to change the background color of an element to CIELCh 53, 77.776, 17.372 is called "background". The background property can be set on classes, ids or directly on the HTML element.

```
.background, #background, body{  
background: rgb(241, 40, 91) }
```

If only the background color should be changed can be used:

```
.background{ background-color: rgb(241, 40,  
91) }
```

This example shows the color as background, it is applied via the CSS property "background".

To optimize and compress your CSS code, you can use our [online CSS compressor and optimizer](#) based on csstidy. If you want to create a linear or radial gradient as background or border, check our [CSS Gradient Generator](#).

Hey! You found this booklet interesting? Support Converting Colors with the new Membership Option!

The pro membership hides all ads, plus gives you double the colors in the color bucket, and more awesome pro features!

[Learn more, Memberships starting at \\$2.50/m!](#)

**Follow me
on Twitter!**

@ConvertingColor