

Converting Colors

CIELCh(53, 80.314, 13.380)

Have a look what the booklet for
CIELCh(53, 80.314, 13.380) contains.

CIELCh(53, 80.313, 13.426)	3
<i>Conversions</i>	4
<i>Details</i>	6
<i>Harmonies</i>	11
<i>Previews</i>	20
<i>Color Blindness Simulation</i>	23
<i>CSS Examples</i>	26

Color

CIELCh(53, 80.313, 13.426)

Conversions

Conversions Part 1

Format	Color
Hex	F51A63
RGB	245, 26, 99
RGB Percent	96%, 10%, 39%
CMY	0.0393, 0.8981, 0.6118
CMYK	0.00, 0.89, 0.60, 0.04
HSL	340°, 92%, 53%
HSV	340°, 89%, 96%
XYZ	40.2688, 21.0462, 13.7405
YIQ	99.8030, 107.0910, 69.1310

Conversions

Conversions Part 2

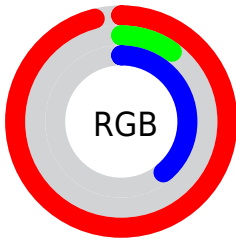
Format	Color
R_{YB}	245, 26, 99
Decimal	16063075
CIE _{Lab}	53.00, 78.12, 18.65
CIE _{LCh}	53, 80.313, 13.426
Yxy	21.0462, 0.5365, 0.2804
Android (android.graphics.Color)	4294253155 (0xFFFF51A63)
YUV	99.8030, -0.3959, 127.3378
Hunter-Lab	45.8761, 76.3993, 14.3551

Details

The CIELCh color **53, 80.313, 13.426** is a dark color, and the websafe version is hex **FF0066**. The color can be described as dark washed rose. A complement of this color would be **86, 68.051, 161.239**, and the grayscale version is **42, 0.006, 296.813**.

A 20% lighter version of the original color is **64, 61.912, 4.875**, and **38, 67.994, 21.664** is the 20% darker color. If you saturate the color by 10%, you get **52, 84.012, 18.809**, and if you desaturate by 10%, it is **55, 75.268, 8.898**.

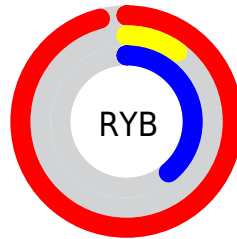
Distribution



Red (96%)

Green (10%)

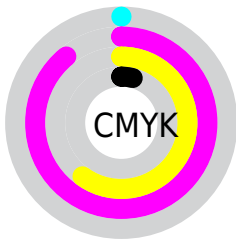
Blue (39%)



Red (96%)

Yellow (10%)

Blue (39%)

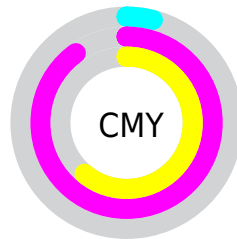


Cyan (0%)

Magenta (89%)

Yellow (60%)

Black (4%)



Cyan (4%)

Magenta (90%)

Yellow (61%)


Brightness & Saturation Gradients

These gradients show how the CIELCh color 53, 80.313, 13.426 changes by changing the brightness by 10 percent. The first figure shows a shift by +10% for each color and the second figure -10%.

Similar to the brightness gradients but the following saturation gradients show a change of the CIELCh color 53, 80.313, 13.426 by changing the saturation by 10% instead.

 53, 80.313, 13.426

 53, 80.313, 13.426

 100, 80.313,
13.426

 43, 80.313, 13.426

 73, 80.313, 13.426

 33, 80.313, 13.426

 83, 80.313, 13.426

 23, 80.313, 13.426

 93, 80.313, 13.426

 13, 80.313, 13.426

 3, 80.313, 13.426

 0, 80.313, 13.426

 53, 80.313, 13.426

 53, 80.313, 13.426

 52, 84.012, 18.809

 55, 75.268, 8.898

 52, 84.242, 19.138

 58, 68.459, 5.293

62, 60.049, 2.457

67, 50.481, 0.211

72, 40.250,
358.399

78, 29.778,
356.903

84, 19.370,
355.636

90, 9.216, 354.525

97, 0.578, 174.579

Harmonies

Complementary

The Complementary color scheme is a pair of colors which are on the opposite of each other on the color wheel.



53, 80.313, 13.426



86, 68.051, 161.239

Rectangle

The Rectangle color scheme consists of four colors that form a rectangle on the color wheel.



53, 80.313, 13.426



53, 80.313, 63.426



53, 80.313, 193.426



53, 80.313, 243.426

Sweetspot

The Sweet Spot groups the original color and five complimentary colors.



53, 80.309, 13.428



82, 28.177, 356.589



47, 113.279, 316.358



42, 19.065, 357.053



0, 0.000, 0.000



53, 0.007, 296.813

Same Dimension

The Same Dimension uses a secret algorithm to generate beautiful new colors.



53, 80.309, 13.428



54, 86.893, 19.272



55, 90.675, 41.178



48, 5.574, 354.535



39, 68.235, 18.077



9, 29.625, 8.999

Inverse Universe

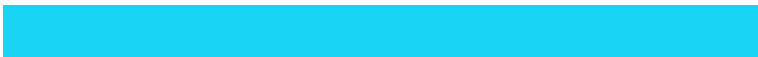
The Inverse Universe completely reimagines the original color for something new.



53, 80.309, 13.428



54, 86.893, 19.272



78, 41.719, 222.248



48, 5.574, 354.535



39, 68.235, 18.077



9, 29.625, 8.999

Previews

White Background



This preview shows how the CIELCh color 53, 80.313, 13.426 looks on a white background.

Color Contrast Check

Large Text (above 18pt) WCAG AA ✓ Pass

Any Text WCAG AA × Fail

Large Text (above 18pt) WCAG AAA × Fail

Any Text WCAG AAA × Fail

Black Background



This preview shows how the CIELCh color 53, 80.313, 13.426 looks on a black background.

Color Contrast Check

Large Text (above 18pt) WCAG AA ✓ Pass

Any Text WCAG AA ✓ Pass

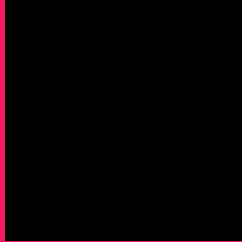
Large Text (above 18pt) WCAG AAA ✓ Pass

Any Text WCAG AAA × Fail

If you want to check with other color combinations, try the [Color Contrast Checker](#).

CIELCh 53, 80.313, 13.426

Background



This preview shows how black text looks on a background with the CIELCh color 53, 80.313, 13.426.



This preview shows how white text looks on a background with the CIELCh color 53, 80.313, 13.426.

Color Blindness Simulation

Color vision deficiency is a very complex topic, and I could not describe the different causes any better than Wikipedia does, so if you want to learn more, you should check out their [article about color blindness](#).

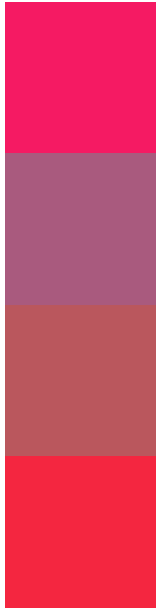
Dichromacy





Tritanopia
53, 87.613, 35.014

Trichromacy



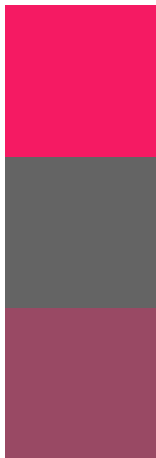
Original Color
53, 80.313, 13.426

Protanomaly
49, 37.164, 351.195

Deuteranomaly
50, 43.484, 21.374

Tritanomaly
53, 83.942, 27.927

Monochromacy



Original Color
53, 80.313, 13.426

Achromatopsia
42, 0.006, 296.813

Achromatomaly
42, 36.454, 0.163

CSS Examples

Text

The CSS property to change the color of the text to CIELCh 53, 80.313, 13.426 is called "color". The color property can be set on classes, ids or directly on the HTML element.

This example shows how text in the color `rgb(245, 26, 99)` looks like.

```
.text, #text, p{  
    color:rgb(245, 26, 99)  
}
```

If you want to add a text shadow in that color use the text-shadow property, you can generate a text shadow directly with our [CSS Text Shadow Generator](#).

Here you see how black text with a 4 pixel rgb(245, 26, 99) colored shadow looks like.

```
.shadow{ text-shadow: 4px 4px 2px rgb(245, 26, 99) }
```

Border

The CSS property to change the border of an element to CIELCh 53, 80.313, 13.426 is called "border". The border property can be set on classes, ids or directly on the HTML element.

This example shows the color as border, it can be applied via the CSS property "border" or "border-color".

```
.border, #border, table{ border:4px solid rgb(245, 26, 99) }
```

If only the border color should be changed use the property border-color.

```
.border{ border-color:rgb(245, 26, 99) }
```

If you want to add a box shadow in that color use:

Here you see how a box with a 4 pixel rgb(245, 26, 99) colored shadow looks like.

```
.boxshadow{ -moz-box-shadow:4px 4px 4px  
4px rgb(245, 26, 99); -webkit-box-  
shadow:4px 4px 4px 4px rgb(245, 26, 99);  
box-shadow:4px 4px 4px 4px rgb(245, 26,  
99) }
```

Background

The CSS property to change the background color of an element to CIELCh 53, 80.313, 13.426 is called "background". The background property can be set on classes, ids or directly on the HTML element.

```
.background, #background, body{  
background: rgb(245, 26, 99) }
```

If only the background color should be changed can be used:

```
.background{ background-color: rgb(245, 26,  
99) }
```

This example shows the color as background, it is applied via the CSS property "background".

To optimize and compress your CSS code, you can use our [online CSS compressor and optimizer](#) based on csstidy. If you want to create a linear or radial gradient as background or border, check our [CSS Gradient Generator](#).

Hey! You found this booklet interesting? Support Converting Colors with the new Membership Option!

The pro membership hides all ads, plus gives you double the colors in the color bucket, and more awesome pro features!

[Learn more, Memberships starting at \\$2.50/m!](#)

**Follow me
on Twitter!**

@ConvertingColor