

Converting Colors

CIELCh(53, 80.451, 6.836)

Have a look what the booklet for
CIELCh(53, 80.451, 6.836) contains.

CIELCh(53, 80.508, 6.868)	3
<i>Conversions</i>	4
<i>Details</i>	6
<i>Harmonies</i>	11
<i>Previews</i>	20
<i>Color Blindness Simulation</i>	23
<i>CSS Examples</i>	26

Color

CIELCh(53, 80.508, 6.868)

Conversions

Conversions Part 1

Format	Color
Hex	F51372
RGB	245, 19, 114
RGB Percent	96%, 7%, 45%
CMY	0.0399, 0.9270, 0.5534
CMYK	0.00, 0.92, 0.53, 0.04
HSL	335°, 92%, 52%
HSV	335°, 92%, 96%
XYZ	40.8546, 21.0462, 17.7904
YIQ	97.4040, 104.2010, 77.4570

Conversions

Conversions Part 2

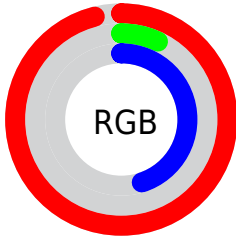
Format	Color
R_{YB}	245, 19, 114
Decimal	16061298
CIE _{Lab}	53.00, 79.93, 9.63
CIE _{LCh}	53, 80.508, 6.868
Yxy	21.0462, 0.5127, 0.2641
Android (android.graphics.Color)	4294251378 (0xFF51372)
YUV	97.4040, 8.1818, 129.4417
Hunter-Lab	45.8761, 78.6785, 9.1211

Details

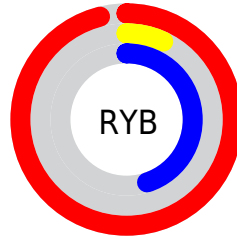
The CIELCh color **53, 80.508, 6.868** is a dark color, and the websafe version is hex **FF0066**. The color can be described as dark washed rose. A complement of this color would be **86, 76.536, 154.789**, and the grayscale version is **41, 0.006, 296.813**.

A 20% lighter version of the original color is **64, 64.326, 356.677**, and **38, 65.991, 14.462** is the 20% darker color. If you saturate the color by 10%, you get **52, 82.095, 10.611**, and if you desaturate by 10%, it is **55, 77.117, 2.658**.

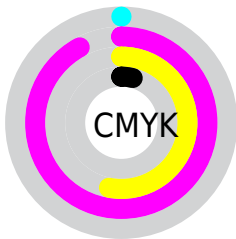
Distribution



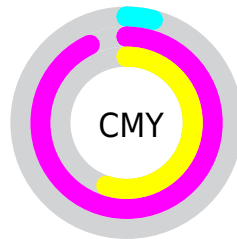
- Red (96%)
- Green (7%)
- Blue (45%)



- Red (96%)
- Yellow (7%)
- Blue (45%)



- Cyan (0%)
- Magenta (92%)
- Yellow (53%)
- Black (4%)



- Cyan (4%)
- Magenta (93%)
- Yellow (55%)

Brightness & Saturation Gradients

These gradients show how the CIELCh color 53, 80.508, 6.868 changes by changing the brightness by 10 percent. The first figure shows a shift by +10% for each color and the second figure -10%.

Similar to the brightness gradients but the following saturation gradients show a change of the CIELCh color 53, 80.508, 6.868 by changing the saturation by 10% instead.

 53, 80.508, 6.868

 53, 80.508, 6.868

 100, 80.508, 6.868

 43, 80.508, 6.868

 73, 80.508, 6.868

 33, 80.508, 6.868

 83, 80.508, 6.868

 23, 80.508, 6.868

 93, 80.508, 6.868

 13, 80.508, 6.868

 3, 80.508, 6.868

 0, 80.508, 6.868

 53, 80.508, 6.868

 53, 80.508, 6.868

 52, 82.095, 10.611

 55, 77.117, 2.658

 57, 71.612,

359.329

61, 64.095,
356.710

66, 55.011,
354.625

71, 44.911,
352.928

76, 34.287,
351.512

82, 23.517,
350.300

89, 12.855,
349.233

95, 2.455, 348.138

Harmonies

Complementary

The Complementary color scheme is a pair of colors which are on the opposite of each other on the color wheel.



53, 80.508, 6.868



86, 76.536, 154.789

Rectangle

The Rectangle color scheme consists of four colors that form a rectangle on the color wheel.



53, 80.508, 6.868



53, 80.508, 56.868



53, 80.508, 186.868



53, 80.508, 236.868

Sweetspot

The Sweet Spot groups the original color and five complimentary colors.



53, 80.504, 6.870



82, 30.540, 350.964



43, 116.390, 313.865



41, 21.141, 351.510



0, 0.000, 0.000



53, 0.007, 296.813

Same Dimension

The Same Dimension uses a secret algorithm to generate beautiful new colors.



53, 80.504, 6.870



54, 84.679, 10.735



52, 95.904, 39.360



48, 5.866, 348.938



40, 66.752, 9.648



9, 29.732, 2.251

Inverse Universe

The Inverse Universe completely reimagines the original color for something new.



53, 80.504, 6.870



54, 84.679, 10.735



84, 44.361, 207.120



48, 5.866, 348.938



40, 66.752, 9.648



9, 29.732, 2.251

Previews

White Background



This preview shows how the CIELCh color 53, 80.508, 6.868 looks on a white background.

Color Contrast Check

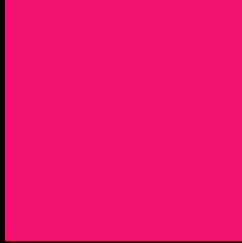
Large Text (above 18pt) WCAG AA ✓ Pass

Any Text WCAG AA ✗ Fail

Large Text (above 18pt) WCAG AAA ✗ Fail

Any Text WCAG AAA ✗ Fail

Black Background



This preview shows how the CIELCh color 53, 80.508, 6.868 looks on a black background.

Color Contrast Check

Large Text (above 18pt) WCAG AA ✓ Pass

Any Text WCAG AA ✓ Pass

Large Text (above 18pt) WCAG AAA ✓ Pass

Any Text WCAG AAA × Fail

If you want to check with other color combinations, try the [Color Contrast Checker](#).

CIELCh 53, 80.508, 6.868

Background



This preview shows how black text looks on a background with the CIELCh color 53, 80.508, 6.868.



This preview shows how white text looks on a background with the CIELCh color 53, 80.508, 6.868.

Color Blindness Simulation

Color vision deficiency is a very complex topic, and I could not describe the different causes any better than Wikipedia does, so if you want to learn more, you should check out their [article about color blindness](#).

Dichromacy



Original Color

53, 80.508, 6.868

Protanopia

53, 22.054, 285.671

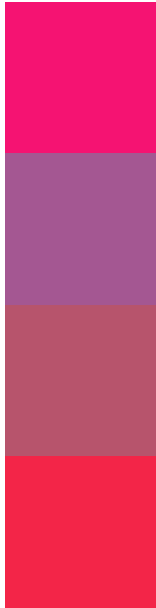
Deuteranopia

53, 15.443, 61.988



Tritanopia
53, 85.721, 34.249

Trichromacy



Original Color
53, 80.508, 6.868

Protanomaly
48, 43.948, 334.942

Deuteranomaly
49, 42.857, 7.802

Tritanomaly
53, 82.004, 24.832

Monochromacy



Original Color
53, 80.508, 6.868

Achromatopsia
41, 0.006, 296.813

Achromatomaly
41, 38.905, 354.731

CSS Examples

Text

The CSS property to change the color of the text to CIELCh 53, 80.508, 6.868 is called "color". The color property can be set on classes, ids or directly on the HTML element.

This example shows how text in the color `rgb(245, 19, 114)` looks like.

```
.text, #text, p{  
    color:rgb(245, 19, 114)  
}
```

If you want to add a text shadow in that color use the text-shadow property, you can generate a text shadow directly with our [CSS Text Shadow Generator](#).

Here you see how black text with a 4 pixel rgb(245, 19, 114) colored shadow looks like.

```
.shadow{ text-shadow: 4px 4px 2px rgb(245, 19, 114) }
```

Border

The CSS property to change the border of an element to CIELCh 53, 80.508, 6.868 is called "border". The border property can be set on classes, ids or directly on the HTML element.

This example shows the color as border, it can be applied via the CSS property "border" or "border-color".

```
.border, #border, table{ border:4px solid rgb(245, 19, 114) }
```

If only the border color should be changed use the property `border-color`.

```
.border{ border-color:rgb(245, 19, 114) }
```

If you want to add a box shadow in that color use:

Here you see how a box with a 4 pixel `rgb(245, 19, 114)` colored shadow looks like.

```
.boxshadow{ -moz-box-shadow:4px 4px 4px 4px rgb(245, 19, 114); -webkit-box-shadow:4px 4px 4px 4px rgb(245, 19, 114); box-shadow:4px 4px 4px 4px rgb(245, 19, 114) }
```

Background

The CSS property to change the background color of an element to CIELCh 53, 80.508, 6.868 is called "background". The background property can be set on classes, ids or directly on the HTML element.

```
.background, #background, body{  
background: rgb(245, 19, 114) }
```

If only the background color should be changed can be used:

```
.background{ background-color: rgb(245, 19,  
114) }
```

This example shows the color as background, it is applied via the CSS property "background".

To optimize and compress your CSS code, you can use our [online CSS compressor and optimizer](#) based on csstidy. If you want to create a linear or radial gradient as background or border, check our [CSS Gradient Generator](#).

Hey! You found this booklet interesting? Support Converting Colors with the new Membership Option!

The pro membership hides all ads, plus gives you double the colors in the color bucket, and more awesome pro features!

[Learn more, Memberships starting at \\$2.50/m!](#)

**Follow me
on Twitter!**

@ConvertingColor