

Converting Colors

CIELCh(53, 81.360, 8.852)

Have a look what the booklet for
CIELCh(53, 81.360, 8.852) contains.

CIELCh(53, 81.284, 8.888)	3
<i>Conversions</i>	4
<i>Details</i>	6
<i>Harmonies</i>	11
<i>Previews</i>	20
<i>Color Blindness Simulation</i>	23
<i>CSS Examples</i>	26

Color

CIELCh(53, 81.284, 8.888)

Conversions

Conversions Part 1

Format	Color
Hex	F60E6D
RGB	246, 14, 109
RGB Percent	96%, 5%, 43%
CMY	0.0348, 0.9434, 0.5722
CMYK	0.00, 0.94, 0.56, 0.03
HSL	335°, 93%, 51%
HSV	335°, 94%, 97%
XYZ	40.9774, 21.0462, 16.3975
YIQ	94.1980, 107.7770, 78.7290

Conversions

Conversions Part 2

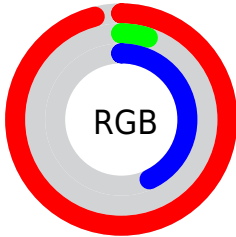
Format	Color
R_{YB}	246, 14, 109
Decimal	16125549
CIE _{Lab}	53.00, 80.31, 12.56
CIE _{LCh}	53, 81.284, 8.888
Yxy	21.0462, 0.5225, 0.2684
Android (android.graphics.Color)	4294315629 (0xFFFF60E6D)
YUV	94.1980, 7.2974, 133.1304
Hunter-Lab	45.8761, 79.1563, 10.9212

Details

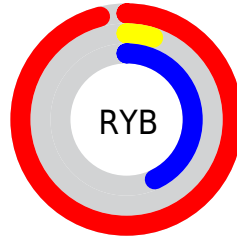
The CIELCh color **53, 81.284, 8.888** is a dark color, and the websafe version is hex **FF0066**. The color can be described as dark saturated rose. A complement of this color would be **86, 76.565, 155.146**, and the grayscale version is **40, 0.006, 296.813**.

A 20% lighter version of the original color is **64, 64.110, 358.833**, and **38, 66.890, 17.290** is the 20% darker color. If you saturate the color by 10%, you get **52, 82.593, 11.867**, and if you desaturate by 10%, it is **55, 78.069, 4.408**.

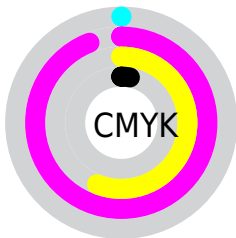
Distribution



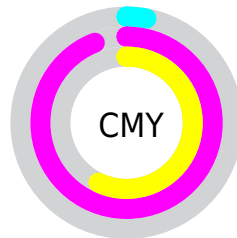
- Red (96%)
- Green (5%)
- Blue (43%)



- Red (96%)
- Yellow (5%)
- Blue (43%)



- Cyan (0%)
- Magenta (94%)
- Yellow (56%)
- Black (3%)



- Cyan (3%)
- Magenta (94%)
- Yellow (57%)

Brightness & Saturation Gradients

These gradients show how the CIELCh color 53, 81.284, 8.888 changes by changing the brightness by 10 percent. The first figure shows a shift by +10% for each color and the second figure -10%.

Similar to the brightness gradients but the following saturation gradients show a change of the CIELCh color 53, 81.284, 8.888 by changing the saturation by 10% instead.

 53, 81.284, 8.888

 53, 81.284, 8.888

 100, 81.284, 8.888

 43, 81.284, 8.888

 73, 81.284, 8.888

 33, 81.284, 8.888

 83, 81.284, 8.888

 23, 81.284, 8.888

 93, 81.284, 8.888

 13, 81.284, 8.888

 3, 81.284, 8.888

 0, 81.284, 8.888

 53, 81.284, 8.888

 53, 81.284, 8.888

 52, 82.593, 11.867

 55, 78.069, 4.408

 57, 72.821, 0.844

61, 65.546,
358.044

65, 56.641,
355.826

70, 46.647,
354.032

76, 36.073,
352.545

82, 25.313,
351.282

88, 14.639,
350.180

94, 4.217, 349.136

Harmonies

Complementary

The Complementary color scheme is a pair of colors which are on the opposite of each other on the color wheel.



53, 81.284, 8.888



86, 76.565, 155.146

Rectangle

The Rectangle color scheme consists of four colors that form a rectangle on the color wheel.



53, 81.284, 8.888



53, 81.284, 58.888



53, 81.284, 188.888



53, 81.284, 238.888

Sweetspot

The Sweet Spot groups the original color and five complimentary colors.



53, 81.280, 8.890



82, 30.337, 351.755



43, 117.301, 314.192



41, 21.007, 352.309



0, 0.000, 0.000



53, 0.007, 296.813

Same Dimension

The Same Dimension uses a secret algorithm to generate beautiful new colors.



53, 81.280, 8.890



54, 84.857, 11.977



53, 97.107, 39.957



48, 5.821, 349.703



40, 66.858, 10.870



9, 29.689, 3.289

Inverse Universe

The Inverse Universe completely reimagines the original color for something new.



53, 81.280, 8.890



54, 84.857, 11.977



83, 43.884, 210.345



48, 5.821, 349.703



40, 66.858, 10.870



9, 29.689, 3.289

Previews

White Background



This preview shows how the CIELCh color 53, 81.284, 8.888 looks on a white background.

Color Contrast Check

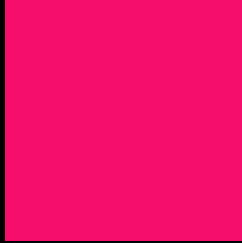
Large Text (above 18pt) WCAG AA ✓ Pass

Any Text WCAG AA ✗ Fail

Large Text (above 18pt) WCAG AAA ✗ Fail

Any Text WCAG AAA ✗ Fail

Black Background



This preview shows how the CIELCh color 53, 81.284, 8.888 looks on a black background.

Color Contrast Check

Large Text (above 18pt) WCAG AA ✓ Pass

Any Text WCAG AA ✓ Pass

Large Text (above 18pt) WCAG AAA ✓ Pass

Any Text WCAG AAA × Fail

If you want to check with other color combinations, try the [Color Contrast Checker](#).

CIELCh 53, 81.284, 8.888

Background



This preview shows how black text looks on a background with the CIELCh color 53, 81.284, 8.888.



This preview shows how white text looks on a background with the CIELCh color 53, 81.284, 8.888.

Color Blindness Simulation

Color vision deficiency is a very complex topic, and I could not describe the different causes any better than Wikipedia does, so if you want to learn more, you should check out their [article about color blindness](#).

Dichromacy



Original Color

53, 81.284, 8.888

Protanopia

53, 18.568, 285.881

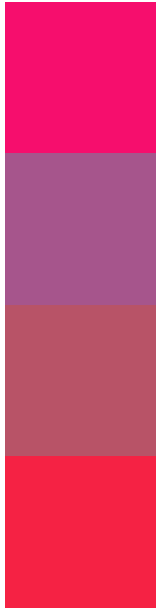
Deuteranopia

53, 17.943, 67.139



Tritanopia
53, 87.980, 35.046

Trichromacy



Original Color
53, 81.284, 8.888

Protanomaly
48, 43.403, 338.986

Deuteranomaly
49, 43.628, 11.392

Tritanomaly
53, 83.945, 26.181

Monochromacy



Original Color
53, 81.284, 8.888

Achromatopsia
40, 0.006, 296.813

Achromatomaly
40, 39.107, 356.089

CSS Examples

Text

The CSS property to change the color of the text to CIELCh 53, 81.284, 8.888 is called "color". The color property can be set on classes, ids or directly on the HTML element.

This example shows how text in the color `rgb(246, 14, 109)` looks like.

```
.text, #text, p{  
    color:rgb(246, 14, 109)  
}
```

If you want to add a text shadow in that color use the text-shadow property, you can generate a text shadow directly with our [CSS Text Shadow Generator](#).

Here you see how black text with a 4 pixel rgb(246, 14, 109) colored shadow looks like.

```
.shadow{ text-shadow: 4px 4px 2px rgb(246, 14, 109) }
```

Border

The CSS property to change the border of an element to CIELCh 53, 81.284, 8.888 is called "border". The border property can be set on classes, ids or directly on the HTML element.

This example shows the color as border, it can be applied via the CSS property "border" or "border-color".

```
.border, #border, table{ border:4px solid rgb(246, 14, 109) }
```

If only the border color should be changed use the property border-color.

```
.border{ border-color:rgb(246, 14, 109) }
```

If you want to add a box shadow in that color use:

Here you see how a box with a 4 pixel rgb(246, 14, 109) colored shadow looks like.

```
.boxshadow{ -moz-box-shadow:4px 4px 4px  
4px rgb(246, 14, 109); -webkit-box-  
shadow:4px 4px 4px 4px rgb(246, 14, 109);  
box-shadow:4px 4px 4px 4px rgb(246, 14,  
109) }
```

Background

The CSS property to change the background color of an element to CIELCh 53, 81.284, 8.888 is called "background". The background property can be set on classes, ids or directly on the HTML element.

```
.background, #background, body{  
background: rgb(246, 14, 109) }
```

If only the background color should be changed can be used:

```
.background{ background-color: rgb(246, 14,  
109) }
```

This example shows the color as background, it is applied via the CSS property "background".

To optimize and compress your CSS code, you can use our [online CSS compressor and optimizer](#) based on csstidy. If you want to create a linear or radial gradient as background or border, check our [CSS Gradient Generator](#).

Hey! You found this booklet interesting? Support Converting Colors with the new Membership Option!

The pro membership hides all ads, plus gives you double the colors in the color bucket, and more awesome pro features!

[Learn more, Memberships starting at \\$2.50/m!](#)

**Follow me
on Twitter!**

@ConvertingColor