

Converting Colors

CIELCh(53, 81.452, 13.705)

Have a look what the booklet for
CIELCh(53, 81.452, 13.705) contains.

CIELCh(53, 81.342, 13.633)	3
<i>Conversions</i>	4
<i>Details</i>	6
<i>Harmonies</i>	11
<i>Previews</i>	20
<i>Color Blindness Simulation</i>	23
<i>CSS Examples</i>	26

Color

CIELCh(53, 81.342, 13.633)

Conversions

Conversions Part 1

Format	Color
Hex	F61562
RGB	246, 21, 98
RGB Percent	96%, 8%, 38%
CMY	0.0343, 0.9190, 0.6149
CMYK	0.00, 0.92, 0.60, 0.03
HSL	339°, 93%, 52%
HSV	339°, 92%, 97%
XYZ	40.5694, 21.0462, 13.5261
YIQ	97.0530, 109.3830, 71.6470

Conversions

Conversions Part 2

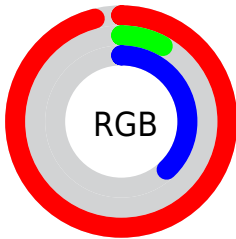
Format	Color
R_{YB}	246, 21, 98
Decimal	16127330
CIE _{Lab}	53.00, 79.05, 19.17
CIE _{LCh}	53, 81.342, 13.633
Yxy	21.0462, 0.5399, 0.2801
Android (android.graphics.Color)	4294317410 (0xFFFF61562)
YUV	97.0530, 0.4669, 130.6265
Hunter-Lab	45.8761, 77.5689, 14.6323

Details

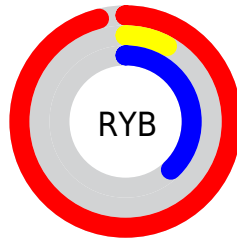
The CIELCh color **53, 81.342, 13.633** is a dark color, and the websafe version is hex **FF0066**. The color can be described as dark washed rose. A complement of this color would be **87, 70.056, 160.006**, and the grayscale version is **41, 0.006, 296.813**.

A 20% lighter version of the original color is **64, 62.672, 4.888**, and **38, 68.527, 22.322** is the 20% darker color. If you saturate the color by 10%, you get **52, 84.218, 18.175**, and if you desaturate by 10%, it is **55, 76.803, 8.945**.

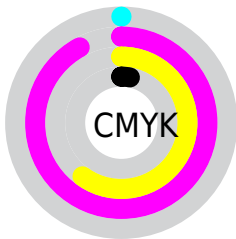
Distribution



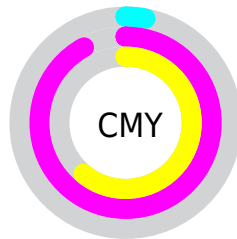
- Red (96%)
- Green (8%)
- Blue (38%)



- Red (96%)
- Yellow (8%)
- Blue (38%)



- Cyan (0%)
- Magenta (92%)
- Yellow (60%)
- Black (3%)



- Cyan (3%)
- Magenta (92%)
- Yellow (61%)


Brightness & Saturation Gradients

These gradients show how the CIELCh color 53, 81.342, 13.633 changes by changing the brightness by 10 percent. The first figure shows a shift by +10% for each color and the second figure -10%.

Similar to the brightness gradients but the following saturation gradients show a change of the CIELCh color 53, 81.342, 13.633 by changing the saturation by 10% instead.

 53, 81.342, 13.633

 53, 81.342, 13.633

 100, 81.342,
13.633

 43, 81.342, 13.633

 73, 81.342, 13.633

 33, 81.342, 13.633

 83, 81.342, 13.633

 23, 81.342, 13.633

 93, 81.342, 13.633

 13, 81.342, 13.633

 3, 81.342, 13.633

 0, 81.342, 13.633

 53, 81.342, 13.633

 53, 81.342, 13.633

 52, 84.218, 18.175

 55, 76.803, 8.945

 58, 70.468, 5.197

62, 62.414, 2.249

66, 53.053,
359.919

71, 42.893,
358.045

77, 32.385,
356.503

83, 21.866,
355.202

89, 11.556,
354.072

96, 1.580, 352.809

Harmonies

Complementary

The Complementary color scheme is a pair of colors which are on the opposite of each other on the color wheel.



53, 81.342, 13.633



87, 70.056, 160.006

Rectangle

The Rectangle color scheme consists of four colors that form a rectangle on the color wheel.



53, 81.342, 13.633



53, 81.342, 63.633



53, 81.342, 193.633



53, 81.342, 243.633

Sweetspot

The Sweet Spot groups the original color and five complimentary colors.



53, 81.338, 13.635



82, 28.308, 355.884



46, 114.857, 316.234



42, 19.149, 356.343



0, 0.000, 0.000



53, 0.007, 296.813

Same Dimension

The Same Dimension uses a secret algorithm to generate beautiful new colors.



53, 81.338, 13.635



54, 86.517, 18.291



54, 93.034, 41.391



48, 5.606, 353.845



39, 67.972, 17.103



9, 29.618, 8.270

Inverse Universe

The Inverse Universe completely reimagines the original color for something new.



53, 81.338, 13.635



54, 86.517, 18.291



79, 42.051, 222.841



48, 5.606, 353.845



39, 67.972, 17.103



9, 29.618, 8.270

Previews

White Background



This preview shows how the CIELCh color 53, 81.342, 13.633 looks on a white background.

Color Contrast Check

Large Text (above 18pt) WCAG AA ✓ Pass

Any Text WCAG AA × Fail

Large Text (above 18pt) WCAG AAA × Fail

Any Text WCAG AAA × Fail

Black Background



This preview shows how the CIELCh color 53, 81.342, 13.633 looks on a black background.

Color Contrast Check

Large Text (above 18pt) WCAG AA ✓ Pass

Any Text WCAG AA ✓ Pass

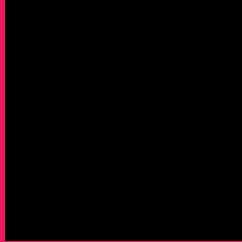
Large Text (above 18pt) WCAG AAA ✓ Pass

Any Text WCAG AAA × Fail

If you want to check with other color combinations, try the [Color Contrast Checker](#).

CIELCh 53, 81.342, 13.633

Background



This preview shows how black text looks on a background with the CIELCh color 53, 81.342, 13.633.



This preview shows how white text looks on a background with the CIELCh color 53, 81.342, 13.633.

Color Blindness Simulation

Color vision deficiency is a very complex topic, and I could not describe the different causes any better than Wikipedia does, so if you want to learn more, you should check out their [article about color blindness](#).

Dichromacy



Original Color

53, 81.243, 13.689

Protanopia

53, 9.260, 288.991

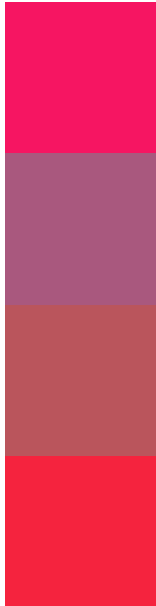
Deuteranopia

53, 24.015, 73.423



Tritanopia
53, 89.062, 35.600

Trichromacy



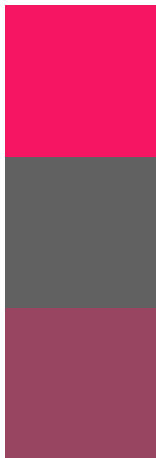
Original Color
53, 81.243, 13.689

Protanomaly
48, 38.314, 350.521

Deuteranomaly
49, 44.348, 20.989

Tritanomaly
53, 85.163, 28.378

Monochromacy



Original Color
53, 81.243, 13.689

Achromatopsia
41, 0.006, 296.813

Achromatomaly
41, 37.441, 0.271

CSS Examples

Text

The CSS property to change the color of the text to CIELCh 53, 81.342, 13.633 is called "color". The color property can be set on classes, ids or directly on the HTML element.

This example shows how text in the color `rgb(246, 21, 98)` looks like.

```
.text, #text, p{  
    color:rgb(246, 21, 98)  
}
```

If you want to add a text shadow in that color use the text-shadow property, you can generate a text shadow directly with our [CSS Text Shadow Generator](#).

Here you see how black text with a 4 pixel rgb(246, 21, 98) colored shadow looks like.

```
.shadow{ text-shadow: 4px 4px 2px rgb(246, 21, 98) }
```

Border

The CSS property to change the border of an element to CIELCh 53, 81.342, 13.633 is called "border". The border property can be set on classes, ids or directly on the HTML element.

This example shows the color as border, it can be applied via the CSS property "border" or "border-color".

```
.border, #border, table{ border:4px solid rgb(246, 21, 98) }
```

If only the border color should be changed use the property `border-color`.

```
.border{ border-color:rgb(246, 21, 98) }
```

If you want to add a box shadow in that color use:

Here you see how a box with a 4 pixel `rgb(246, 21, 98)` colored shadow looks like.

```
.boxshadow{ -moz-box-shadow:4px 4px 4px  
4px rgb(246, 21, 98); -webkit-box-  
shadow:4px 4px 4px 4px rgb(246, 21, 98);  
box-shadow:4px 4px 4px 4px rgb(246, 21,  
98) }
```

Background

The CSS property to change the background color of an element to CIELCh 53, 81.342, 13.633 is called "background". The background property can be set on classes, ids or directly on the HTML element.

```
.background, #background, body{  
background: rgb(246, 21, 98) }
```

If only the background color should be changed can be used:

```
.background{ background-color: rgb(246, 21,  
98) }
```

This example shows the color as background, it is applied via the CSS property "background".

To optimize and compress your CSS code, you can use our [online CSS compressor and optimizer](#) based on csstidy. If you want to create a linear or radial gradient as background or border, check our [CSS Gradient Generator](#).

Hey! You found this booklet interesting? Support Converting Colors with the new Membership Option!

The pro membership hides all ads, plus gives you double the colors in the color bucket, and more awesome pro features!

[Learn more, Memberships starting at \\$2.50/m!](#)

**Follow me
on Twitter!**

@ConvertingColor