

Converting Colors

CIELCh(53, 82.380, 10.673)

Have a look what the booklet for
CIELCh(53, 82.380, 10.673) contains.

CIELCh(53, 82.442, 10.641)	3
<i>Conversions</i>	4
<i>Details</i>	6
<i>Harmonies</i>	11
<i>Previews</i>	20
<i>Color Blindness Simulation</i>	23
<i>CSS Examples</i>	26

Color

CIELCh(53, 82.442, 10.641)

Conversions

Conversions Part 1

Format	Color
Hex	F80669
RGB	248, 6, 105
RGB Percent	97%, 2%, 41%
CMY	0.0286, 0.9768, 0.5891
CMYK	0.00, 0.98, 0.58, 0.03
HSL	335°, 95%, 50%
HSV	335°, 98%, 97%
XYZ	41.2110, 21.0462, 15.1963
YIQ	89.6440, 112.4530, 82.0930

Conversions

Conversions Part 2

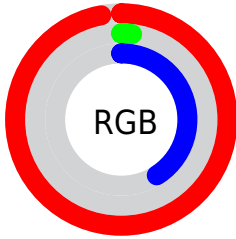
Format	Color
RYB	248, 6, 105
Decimal	16254569
CIELab	53.00, 81.02, 15.22
CIELCh	53, 82.442, 10.641
Yxy	21.0462, 0.5321, 0.2717
Android (android.graphics.Color)	4294444649 (0xFFFF80669)
YUV	89.6440, 7.5705, 138.8782
Hunter-Lab	45.8761, 80.0651, 12.4737

Details

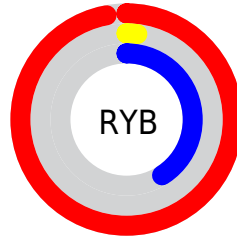
The CIELCh color **53, 82.442, 10.641** is a dark color, and the websafe version is hex **FF0066**. The color can be described as dark saturated rose. A complement of this color would be **87, 78.493, 154.310**, and the grayscale version is **38, 0.005, 296.813**.

A 20% lighter version of the original color is **64, 64.512, 0.333**, and **39, 67.982, 19.205** is the 20% darker color. If you saturate the color by 10%, you get **53, 82.994, 11.856**, and if you desaturate by 10%, it is **54, 79.799, 5.841**.

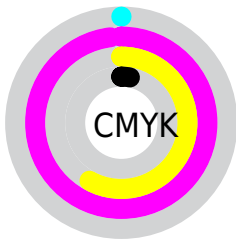
Distribution



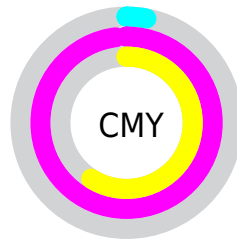
- Red (97%)
- Green (2%)
- Blue (41%)



- Red (97%)
- Yellow (2%)
- Blue (41%)



- Cyan (0%)
- Magenta (98%)
- Yellow (58%)
- Black (3%)



- Cyan (3%)
- Magenta (98%)
- Yellow (59%)


Brightness & Saturation Gradients

These gradients show how the CIELCh color 53, 82.442, 10.641 changes by changing the brightness by 10 percent. The first figure shows a shift by +10% for each color and the second figure -10%.

Similar to the brightness gradients but the following saturation gradients show a change of the CIELCh color 53, 82.442, 10.641 by changing the saturation by 10% instead.

 53, 82.442, 10.641

 53, 82.442, 10.641

 100, 82.442,
10.641

 43, 82.442, 10.641

 73, 82.442, 10.641

 33, 82.442, 10.641

 83, 82.442, 10.641

 23, 82.442, 10.641

 93, 82.442, 10.641

 13, 82.442, 10.641

 3, 82.442, 10.641

 0, 82.442, 10.641

 53, 82.442, 10.641

 53, 82.442, 10.641

 53, 82.994, 11.856

 54, 79.799, 5.841

 56, 75.271, 1.970

60, 68.642,
358.925

64, 60.205,
356.523

69, 50.480,
354.597

74, 40.002,
353.014

80, 29.213,
351.681

86, 18.427,
350.530

93, 7.847, 349.493

Harmonies

Complementary

The Complementary color scheme is a pair of colors which are on the opposite of each other on the color wheel.



53, 82.442, 10.641



87, 78.493, 154.310

Rectangle

The Rectangle color scheme consists of four colors that form a rectangle on the color wheel.



53, 82.442, 10.641



53, 82.442, 60.641



53, 82.442, 190.641



53, 82.442, 240.641

Sweetspot

The Sweet Spot groups the original color and five complimentary colors.



53, 82.438, 10.643



81, 31.451, 351.860



43, 119.211, 313.930



41, 21.639, 352.416



0, 0.000, 0.000



53, 0.007, 296.813

Same Dimension

The Same Dimension uses a secret algorithm to generate beautiful new colors.



53, 82.438, 10.643



54, 84.852, 11.946



53, 99.741, 40.354



49, 5.921, 349.686



40, 67.541, 10.893



10, 30.507, 3.663

Inverse Universe

The Inverse Universe completely reimagines the original color for something new.



53, 82.438, 10.643



54, 84.852, 11.946



83, 44.173, 210.848



49, 5.921, 349.686



40, 67.541, 10.893



10, 30.507, 3.663

Previews

White Background



This preview shows how the CIELCh color 53, 82.442, 10.641 looks on a white background.

Color Contrast Check

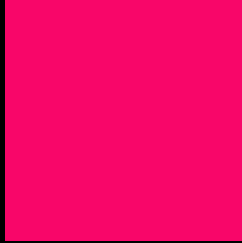
Large Text (above 18pt) WCAG AA ✓ Pass

Any Text WCAG AA × Fail

Large Text (above 18pt) WCAG AAA × Fail

Any Text WCAG AAA × Fail

Black Background



This preview shows how the CIELCh color 53, 82.442, 10.641 looks on a black background.

Color Contrast Check

Large Text (above 18pt) WCAG AA ✓ Pass

Any Text WCAG AA ✓ Pass

Large Text (above 18pt) WCAG AAA ✓ Pass

Any Text WCAG AAA × Fail

If you want to check with other color combinations, try the [Color Contrast Checker](#).

CIELCh 53, 82.442, 10.641

Background



This preview shows how black text looks on a background with the CIELCh color 53, 82.442, 10.641.

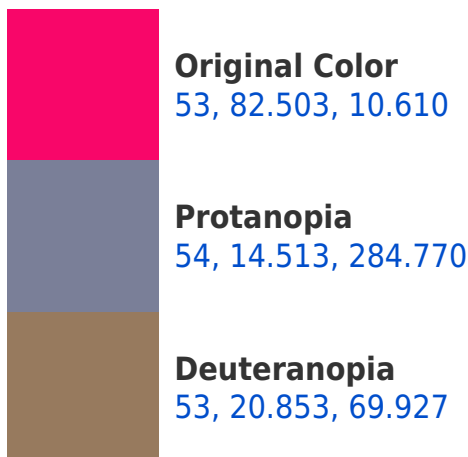


This preview shows how white text looks on a background with the CIELCh color 53, 82.442, 10.641.

Color Blindness Simulation

Color vision deficiency is a very complex topic, and I could not describe the different causes any better than Wikipedia does, so if you want to learn more, you should check out their [article about color blindness](#).

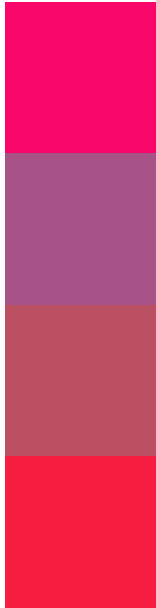
Dichromacy





Tritanopia
53, 89.828, 35.768

Trichromacy



Original Color
53, 82.503, 10.610

Protanomaly
47, 43.415, 342.572

Deuteranomaly
48, 45.813, 14.097

Tritanomaly
53, 85.772, 27.222

Monochromacy



Original Color
53, 82.503, 10.610

Achromatopsia
38, 0.005, 296.813

Achromatomaly
38, 40.906, 356.537

CSS Examples

Text

The CSS property to change the color of the text to CIELCh 53, 82.442, 10.641 is called "color". The color property can be set on classes, ids or directly on the HTML element.

This example shows how text in the color `rgb(248, 6, 105)` looks like.

```
.text, #text, p{  
    color:rgb(248, 6, 105)  
}
```

If you want to add a text shadow in that color use the text-shadow property, you can generate a text shadow directly with our [CSS Text Shadow Generator](#).

Here you see how black text with a 4 pixel rgb(248, 6, 105) colored shadow looks like.

```
.shadow{ text-shadow: 4px 4px 2px rgb(248, 6, 105) }
```

Border

The CSS property to change the border of an element to CIELCh 53, 82.442, 10.641 is called "border". The border property can be set on classes, ids or directly on the HTML element.

This example shows the color as border, it can be applied via the CSS property "border" or "border-color".

```
.border, #border, table{ border:4px solid rgb(248, 6, 105) }
```

If only the border color should be changed use the property `border-color`.

```
.border{ border-color:rgb(248, 6, 105) }
```

If you want to add a box shadow in that color use:

Here you see how a box with a 4 pixel `rgb(248, 6, 105)` colored shadow looks like.

```
.boxshadow{ -moz-box-shadow:4px 4px 4px  
4px rgb(248, 6, 105); -webkit-box-  
shadow:4px 4px 4px 4px rgb(248, 6, 105);  
box-shadow:4px 4px 4px 4px rgb(248, 6,  
105) }
```

Background

The CSS property to change the background color of an element to CIELCh 53, 82.442, 10.641 is called "background". The background property can be set on classes, ids or directly on the HTML element.

```
.background, #background, body{  
background: rgb(248, 6, 105) }
```

If only the background color should be changed can be used:

```
.background{ background-color: rgb(248, 6,  
105) }
```

This example shows the color as background, it is applied via the CSS property "background".

To optimize and compress your CSS code, you can use our [online CSS compressor and optimizer](#) based on csstidy. If you want to create a linear or radial gradient as background or border, check our [CSS Gradient Generator](#).

Hey! You found this booklet interesting? Support Converting Colors with the new Membership Option!

The pro membership hides all ads, plus gives you double the colors in the color bucket, and more awesome pro features!

[Learn more, Memberships starting at \\$2.50/m!](#)

**Follow me
on Twitter!**

@ConvertingColor