

Converting Colors

CIELCh(53, 83.753, 13.026)

Have a look what the booklet for
CIELCh(53, 83.753, 13.026) contains.

CIELCh(53, 83.517, 12.985)	3
<i>Conversions</i>	4
<i>Details</i>	6
<i>Harmonies</i>	11
<i>Previews</i>	20
<i>Color Blindness Simulation</i>	23
<i>CSS Examples</i>	26

Color

CIELCh(53, 83.517, 12.985)

Conversions

Conversions Part 1

Format	Color
Hex	F90063
RGB	249, 0, 99
RGB Percent	98%, 0%, 39%
CMY	0.0235, 0.9995, 0.6117
CMYK	0.00, 1.00, 0.60, 0.02
HSL	336°, 100%, 49%
HSV	336°, 100%, 98%
XYZ	41.3277, 21.0462, 13.6920
YIQ	85.7370, 116.6250, 83.5770

Conversions

Conversions Part 2

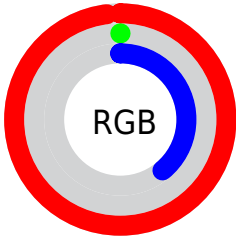
Format	Color
R_{YB}	249, 0, 99
Decimal	16318563
CIE _{Lab}	53.00, 81.38, 18.77
CIE _{LCh}	53, 83.517, 12.985
Yxy	21.0462, 0.5433, 0.2767
Android (android.graphics.Color)	4294508643 (0xFFFF90063)
YUV	85.7370, 6.5387, 143.1817
Hunter-Lab	45.8761, 80.5195, 14.4178

Details

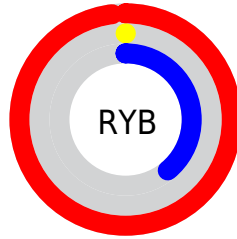
The CIELCh color **53, 83.517, 12.985** is a dark color, and the websafe version is hex **FF0066**. The color can be described as dark saturated rose. A complement of this color would be **87, 78.752, 154.497**, and the grayscale version is **36, 0.005, 296.813**.

A 20% lighter version of the original color is **63, 64.337, 3.480**, and **39, 69.023, 22.165** is the 20% darker color. If you saturate the color by 10%, you get **53, 83.528, 13.015**, and if you desaturate by 10%, it is **54, 80.908, 7.945**.

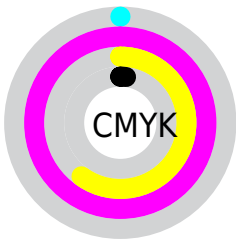
Distribution



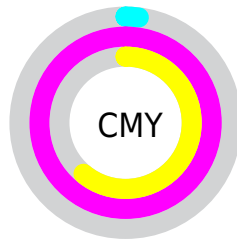
- Red (98%)
- Green (0%)
- Blue (39%)



- Red (98%)
- Yellow (0%)
- Blue (39%)



- Cyan (0%)
- Magenta (100%)
- Yellow (60%)
- Black (2%)



- Cyan (2%)
- Magenta (100%)
- Yellow (61%)

Brightness & Saturation Gradients

These gradients show how the CIELCh color 53, 83.517, 12.985 changes by changing the brightness by 10 percent. The first figure shows a shift by +10% for each color and the second figure -10%.

Similar to the brightness gradients but the following saturation gradients show a change of the CIELCh color 53, 83.517, 12.985 by changing the saturation by 10% instead.

 53, 83.517, 12.985  53, 83.517, 12.985

 100, 83.517,
12.985  43, 83.517, 12.985

 73, 83.517, 12.985  33, 83.517, 12.985

 83, 83.517, 12.985  23, 83.517, 12.985

 93, 83.517, 12.985  13, 83.517, 12.985

 3, 83.517, 12.985

 0, 83.517, 12.985

 53, 83.517, 12.985  53, 83.517, 12.985

 53, 83.528, 13.015  54, 80.908, 7.945

 56, 76.726, 3.767

■ 59, 70.473, 0.469

■ 63, 62.344,
357.875

■ 68, 52.822,
355.808

■ 73, 42.449,
354.125

■ 79, 31.690,
352.718

■ 85, 20.888,
351.514

■ 91, 10.265,
350.448

Harmonies

Complementary

The Complementary color scheme is a pair of colors which are on the opposite of each other on the color wheel.



53, 83.517, 12.985



87, 78.752, 154.497

Rectangle

The Rectangle color scheme consists of four colors that form a rectangle on the color wheel.



53, 83.517, 12.985



53, 83.517, 62.985



53, 83.517, 192.985



53, 83.517, 242.985

Sweetspot

The Sweet Spot groups the original color and five complimentary colors.



53, 83.513, 12.987



81, 32.368, 352.731



43, 120.136, 314.211



40, 22.141, 353.297



0, 0.000, 0.000



53, 0.007, 296.813

Same Dimension

The Same Dimension uses a secret algorithm to generate beautiful new colors.



53, 83.513, 12.987



54, 85.058, 13.090



53, 101.164, 40.919



49, 5.880, 350.402



40, 67.673, 12.020



10, 30.480, 4.639

Inverse Universe

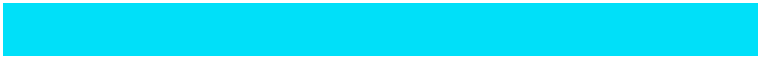
The Inverse Universe completely reimagines the original color for something new.



53, 83.513, 12.987



54, 85.058, 13.090



82, 43.776, 214.556



49, 5.880, 350.402



40, 67.673, 12.020



10, 30.480, 4.639

Previews

White Background



This preview shows how the CIELCh color 53, 83.517, 12.985 looks on a white background.

Color Contrast Check

Large Text (above 18pt) WCAG AA ✓ Pass

Any Text WCAG AA ✗ Fail

Large Text (above 18pt) WCAG AAA ✗ Fail

Any Text WCAG AAA ✗ Fail

Black Background



This preview shows how the CIELCh color 53, 83.517, 12.985 looks on a black background.

Color Contrast Check

Large Text (above 18pt) WCAG AA ✓ Pass

Any Text WCAG AA ✓ Pass

Large Text (above 18pt) WCAG AAA ✓ Pass

Any Text WCAG AAA × Fail

If you want to check with other color combinations, try the [Color Contrast Checker](#).

CIELCh 53, 83.517, 12.985

Background



This preview shows how black text looks on a background with the CIELCh color 53, 83.517, 12.985.

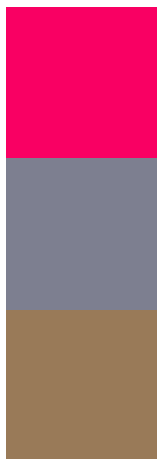


This preview shows how white text looks on a background with the CIELCh color 53, 83.517, 12.985.

Color Blindness Simulation

Color vision deficiency is a very complex topic, and I could not describe the different causes any better than Wikipedia does, so if you want to learn more, you should check out their [article about color blindness](#).

Dichromacy



Original Color

53, 83.517, 12.985

Protanopia

54, 9.838, 287.020

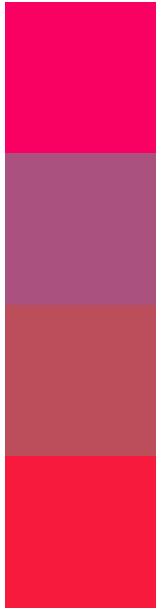
Deuteranopia

53, 24.291, 72.560



Tritanopia
53, 91.597, 36.341

Trichromacy



Original Color
53, 83.517, 12.985

Protanomaly
47, 43.078, 347.543

Deuteranomaly
48, 47.807, 17.754

Tritanomaly
53, 87.703, 28.503

Monochromacy



Original Color
53, 83.517, 12.985

Achromatopsia
37, 0.005, 296.813

Achromatomaly
37, 41.620, 357.642

CSS Examples

Text

The CSS property to change the color of the text to CIELCh 53, 83.517, 12.985 is called "color". The color property can be set on classes, ids or directly on the HTML element.

This example shows how text in the color `rgb(249, 0, 99)` looks like.

```
.text, #text, p{  
    color:rgb(249, 0, 99)  
}
```

If you want to add a text shadow in that color use the text-shadow property, you can generate a text shadow directly with our [CSS Text Shadow Generator](#).

Here you see how black text with a 4 pixel rgb(249, 0, 99) colored shadow looks like.

```
.shadow{ text-shadow: 4px 4px 2px rgb(249, 0, 99) }
```

Border

The CSS property to change the border of an element to CIELCh 53, 83.517, 12.985 is called "border". The border property can be set on classes, ids or directly on the HTML element.

This example shows the color as border, it can be applied via the CSS property "border" or "border-color".

```
.border, #border, table{ border:4px solid rgb(249, 0, 99) }
```

If only the border color should be changed use the property border-color.

```
.border{ border-color:rgb(249, 0, 99) }
```

If you want to add a box shadow in that color use:

Here you see how a box with a 4 pixel rgb(249, 0, 99) colored shadow looks like.

```
.boxshadow{ -moz-box-shadow:4px 4px 4px  
4px rgb(249, 0, 99); -webkit-box-  
shadow:4px 4px 4px 4px rgb(249, 0, 99);  
box-shadow:4px 4px 4px 4px rgb(249, 0, 99)  
}
```

Background

The CSS property to change the background color of an element to CIELCh 53, 83.517, 12.985 is called "background". The background property can be set on classes, ids or directly on the HTML element.

```
.background, #background, body{  
background: rgb(249, 0, 99) }
```

If only the background color should be changed can be used:

```
.background{ background-color: rgb(249, 0,  
99) }
```

This example shows the color as background, it is applied via the CSS property "background".

To optimize and compress your CSS code, you can use our [online CSS compressor and optimizer](#) based on csstidy. If you want to create a linear or radial gradient as background or border, check our [CSS Gradient Generator](#).

Hey! You found this booklet interesting? Support Converting Colors with the new Membership Option!

The pro membership hides all ads, plus gives you double the colors in the color bucket, and more awesome pro features!

[Learn more, Memberships starting at \\$2.50/m!](#)

**Follow me
on Twitter!**

@ConvertingColor