

Converting Colors

CIELCh(54, 23.487, 21.257)

Have a look what the booklet for
CIELCh(54, 23.487, 21.257) contains.

CIELCh(54, 23.433, 22.143)	3
<i>Conversions</i>	4
<i>Details</i>	6
<i>Harmonies</i>	11
<i>Previews</i>	20
<i>Color Blindness Simulation</i>	23
<i>CSS Examples</i>	26

Color

CIELCh(54, 23.433, 22.143)

Conversions

Conversions Part 1

Format	Color
Hex	AA7373
RGB	170, 115, 115
RGB Percent	67%, 45%, 45%
CMY	0.3341, 0.5497, 0.5498
CMYK	0.00, 0.32, 0.32, 0.33
HSL	0°, 24%, 56%
HSV	0°, 32%, 67%
XYZ	25.7256, 21.9746, 19.0486
YIQ	131.4450, 32.7800, 11.6600

Conversions

Conversions Part 2

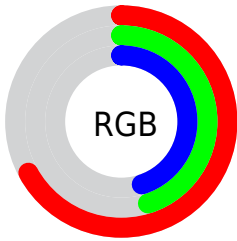
Format	Color
R_{YB}	170, 115, 115
Decimal	11170675
CIE _{Lab}	54.00, 21.70, 8.83
CIE _{LCh}	54, 23.433, 22.143
Yxy	21.9746, 0.3854, 0.3292
Android (android.graphics.Color)	4289360755 (0xFFAA7373)
YUV	131.4450, -8.1074, 33.8127
Hunter-Lab	46.8770, 15.9239, 8.7213

Details

The CIELCh color **54, 23.433, 22.143** is a dark color, and the websafe version is hex **996666**. A complement of this color would be **66, 18.813, 197.846**, and the grayscale version is **55, 0.007, 296.813**.

A 20% lighter version of the original color is **74, 23.745, 21.505**, and **34, 23.457, 21.999** is the 20% darker color. If you saturate the color by 10%, you get **50, 31.735, 23.595**, and if you desaturate by 10%, it is **59, 15.604, 21.032**.

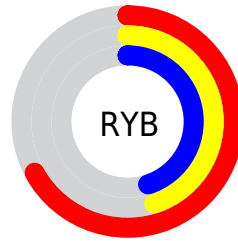
Distribution



Red (67%)

Green (45%)

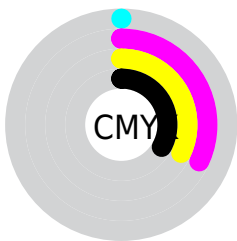
Blue (45%)



Red (67%)

Yellow (45%)

Blue (45%)

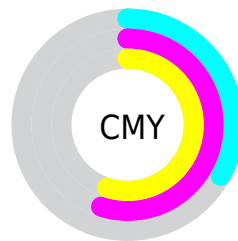


Cyan (0%)

Magenta (32%)

Yellow (32%)

Black (33%)



Cyan (33%)

Magenta (55%)

Yellow (55%)

Brightness & Saturation Gradients

These gradients show how the CIELCh color 54, 23.433, 22.143 changes by changing the brightness by 10 percent. The first figure shows a shift by +10% for each color and the second figure -10%.

Similar to the brightness gradients but the following saturation gradients show a change of the CIELCh color 54, 23.433, 22.143 by changing the saturation by 10% instead.

■ 54, 23.433, 22.143

■ 54, 23.433, 22.143

■ 100, 23.433,
22.143

■ 44, 23.433, 22.143

■ 74, 23.433, 22.143

■ 34, 23.433, 22.143

■ 84, 23.433, 22.143

■ 24, 23.433, 22.143

■ 94, 23.433, 22.143

■ 14, 23.433, 22.143

■ 4, 23.433, 22.143

■ 0, 23.433, 22.143

■ 54, 23.433, 22.143

■ 54, 23.433, 22.143

■ 50, 31.735, 23.595

■ 59, 15.604, 21.032

■ 46, 40.395, 25.476

■ 63, 8.305, 20.152

42, 49.209, 27.895

68, 1.537, 19.231

39, 57.891, 30.905

73, 4.728, 199.132

37, 66.028, 34.374

78, 10.532,
198.662

36, 72.819, 37.726

83, 15.922,
198.316

35, 76.979, 39.885

88, 20.946,
198.041

94, 25.650,
197.817

95, 26.810,
197.765

Harmonies

Complementary

The Complementary color scheme is a pair of colors which are on the opposite of each other on the color wheel.



54, 23.433, 22.143



66, 18.813, 197.846

Rectangle

The Rectangle color scheme consists of four colors that form a rectangle on the color wheel.



54, 23.433, 22.143



54, 23.433, 72.143



54, 23.433, 202.143



54, 23.433, 252.143

Sweetspot

The Sweet Spot groups the original color and five complimentary colors.



54, 23.431, 22.148



82, 8.267, 19.979



56, 37.112, 326.163



43, 5.716, 20.086



95, 0.011, 296.813



47, 0.006, 296.813

Same Dimension

The Same Dimension uses a secret algorithm to generate beautiful new colors.



54, 23.431, 22.148



66, 35.984, 23.170



61, 19.524, 71.453



33, 3.724, 19.908



30, 69.026, 39.360



1, 6.572, 19.407

Inverse Universe

The Inverse Universe completely reimagines the original color for something new.



66, 18.813, 197.846



83, 27.298, 197.553



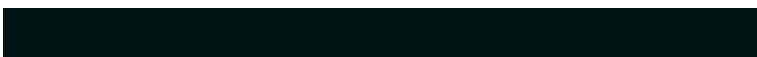
58, 17.866, 260.515



35, 3.516, 198.994



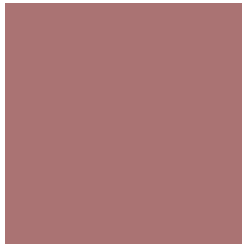
55, 33.387, 196.390



5, 6.572, 199.425

Previews

White Background



This preview shows how the CIELCh color 54, 23.433, 22.143 looks on a white background.

Color Contrast Check

Large Text (above 18pt) WCAG AA ✓ Pass

Any Text WCAG AA ✗ Fail

Large Text (above 18pt) WCAG AAA ✗ Fail

Any Text WCAG AAA ✗ Fail

Black Background



This preview shows how the CIE LCh color 54, 23.433, 22.143 looks on a black background.

Color Contrast Check

Large Text (above 18pt) WCAG AA ✓ Pass

Any Text WCAG AA ✓ Pass

Large Text (above 18pt) WCAG AAA ✓ Pass

Any Text WCAG AAA × Fail

If you want to check with other color combinations, try the [Color Contrast Checker](#).

CIELCh 54, 23.433, 22.143

Background



This preview shows how black text looks on a background with the CIELCh color 54, 23.433, 22.143.

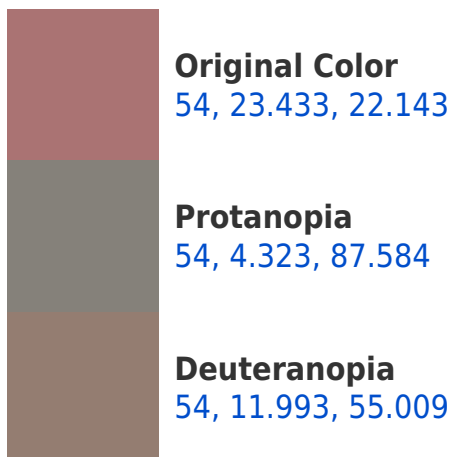


This preview shows how white text looks on a background with the CIELCh color 54, 23.433, 22.143.

Color Blindness Simulation

Color vision deficiency is a very complex topic, and I could not describe the different causes any better than Wikipedia does, so if you want to learn more, you should check out their [article about color blindness](#).

Dichromacy





Tritanopia
54, 24.123, 11.553

Trichromacy



Original Color
54, 23.433, 22.143

Protanomaly
54, 9.610, 37.594

Deuteranomaly
54, 15.481, 35.836

Tritanomaly
54, 24.098, 15.592

Monochromacy



Original Color
54, 23.433, 22.143

Achromatopsia
55, 0.007, 296.813

Achromatomaly
54, 8.173, 20.250

CSS Examples

Text

The CSS property to change the color of the text to CIELCh 54, 23.433, 22.143 is called "color". The color property can be set on classes, ids or directly on the HTML element.

This example shows how text in the color `rgb(170, 115, 115)` looks like.

```
.text, #text, p{  
    color:rgb(170, 115, 115)  
}
```

If you want to add a text shadow in that color use the text-shadow property, you can generate a text shadow directly with our [CSS Text Shadow Generator](#).

Here you see how black text with a 4 pixel rgb(170, 115, 115) colored shadow looks like.

```
.shadow{ text-shadow: 4px 4px 2px rgb(170, 115, 115) }
```

Border

The CSS property to change the border of an element to CIELCh 54, 23.433, 22.143 is called "border". The border property can be set on classes, ids or directly on the HTML element.

This example shows the color as border, it can be applied via the CSS property "border" or "border-color".

```
.border, #border, table{ border:4px solid rgb(170, 115, 115) }
```

If only the border color should be changed use the property `border-color`.

```
.border{ border-color:rgb(170, 115, 115) }
```

If you want to add a box shadow in that color use:

Here you see how a box with a 4 pixel `rgb(170, 115, 115)` colored shadow looks like.

```
.boxshadow{ -moz-box-shadow:4px 4px 4px  
4px rgb(170, 115, 115); -webkit-box-  
shadow:4px 4px 4px 4px rgb(170, 115, 115);  
box-shadow:4px 4px 4px 4px rgb(170, 115,  
115) }
```

Background

The CSS property to change the background color of an element to CIELCh 54, 23.433, 22.143 is called "background". The background property can be set on classes, ids or directly on the HTML element.

```
.background, #background, body{  
background: rgb(170, 115, 115) }
```

If only the background color should be changed can be used:

```
.background{ background-color: rgb(170,  
115, 115) }
```

This example shows the color as background, it is applied via the CSS property "background".

To optimize and compress your CSS code, you can use our [online CSS compressor and optimizer](#) based on csstidy. If you want to create a linear or radial gradient as background or border, check our [CSS Gradient Generator](#).

Hey! You found this booklet interesting? Support Converting Colors with the new Membership Option!

The pro membership hides all ads, plus gives you double the colors in the color bucket, and more awesome pro features!

[Learn more, Memberships starting at \\$2.50/m!](#)

**Follow me
on Twitter!**

@ConvertingColor