

Converting Colors

CIELCh(54, 59.152, 1.144)

Have a look what the booklet for
CIELCh(54, 59.152, 1.144) contains.

CIELCh(54, 58.872, 1.260)	3
<i>Conversions</i>	4
<i>Details</i>	6
<i>Harmonies</i>	11
<i>Previews</i>	20
<i>Color Blindness Simulation</i>	23
<i>CSS Examples</i>	26

Color

CIELCh(54, 58.872, 1.260)

Conversions

Conversions Part 1

Format	Color
Hex	DA4E81
RGB	218, 78, 129
RGB Percent	85%, 31%, 51%
CMY	0.1447, 0.6937, 0.4937
CMYK	0.00, 0.64, 0.41, 0.14
HSL	338°, 65%, 58%
HSV	338°, 64%, 86%
XYZ	35.6484, 21.9746, 23.1649
YIQ	125.6740, 67.0690, 45.5410

Conversions

Conversions Part 2

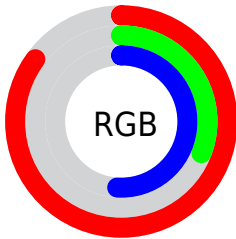
Format	Color
RYB	218, 78, 129
Decimal	14306945
CIELab	54.00, 58.86, 1.29
CIElCh	54, 58.872, 1.260
Yxy	21.9746, 0.4413, 0.2720
Android (android.graphics.Color)	4292497025 (0xFFDA4E81)
YUV	125.6740, 1.6397, 80.9699
Hunter-Lab	46.8770, 53.7085, 3.5150

Details

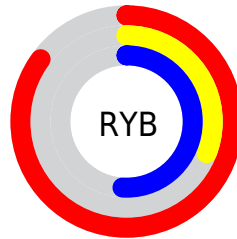
The CIELCh color **54, 58.872, 1.260** is a dark color, and the websafe version is hex **CC3366**. The color can be described as middle muted rose. A complement of this color would be **79, 51.508, 164.030**, and the grayscale version is **53, 0.007, 296.813**.

A 20% lighter version of the original color is **71, 51.258, 355.408**, and **34, 58.731, 1.181** is the 20% darker color. If you saturate the color by 10%, you get **51, 65.746, 4.243**, and if you desaturate by 10%, it is **58, 50.662, 358.903**.

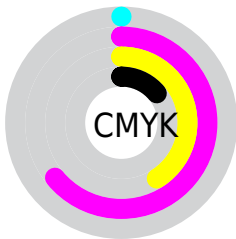
Distribution



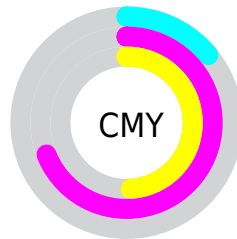
- Red (85%)
- Green (31%)
- Blue (51%)



- Red (85%)
- Yellow (31%)
- Blue (51%)



- Cyan (0%)
- Magenta (64%)
- Yellow (41%)
- Black (14%)



- Cyan (14%)
- Magenta (69%)
- Yellow (49%)

Brightness & Saturation Gradients

These gradients show how the CIELCh color 54, 58.872, 1.260 changes by changing the brightness by 10 percent. The first figure shows a shift by +10% for each color and the second figure -10%.

Similar to the brightness gradients but the following saturation gradients show a change of the CIELCh color 54, 58.872, 1.260 by changing the saturation by 10% instead.

 54, 58.872, 1.260

 54, 58.872, 1.260

 100, 58.872, 1.260

 44, 58.872, 1.260

 74, 58.872, 1.260

 34, 58.872, 1.260

 84, 58.872, 1.260

 24, 58.872, 1.260

 94, 58.872, 1.260

 14, 58.872, 1.260


 4, 58.872, 1.260

 0, 58.872, 1.260

 54, 58.872, 1.260

 54, 58.872, 1.260

 51, 65.746, 4.243

 58, 50.662,
358.903

 48, 70.958, 8.028

47, 74.503, 12.748

63, 41.589,
357.007

46, 76.168, 15.788

68, 32.080,
355.447

73, 22.472,
354.132

79, 12.989,
352.993

85, 3.769, 351.921

91, 5.118, 171.275

97, 13.642,
170.437

97, 12.462,
196.110

Harmonies

Complementary

The Complementary color scheme is a pair of colors which are on the opposite of each other on the color wheel.



54, 58.872, 1.260



79, 51.508, 164.030

Rectangle

The Rectangle color scheme consists of four colors that form a rectangle on the color wheel.



54, 58.872, 1.260



54, 58.872, 51.260



54, 58.872, 181.260



54, 58.872, 231.260

Sweetspot

The Sweet Spot groups the original color and five complimentary colors.



54, 58.869, 1.262



88, 19.901, 353.543



50, 82.076, 316.164



45, 13.753, 353.877



0, 0.000, 0.000



53, 0.007, 296.813

Same Dimension

The Same Dimension uses a secret algorithm to generate beautiful new colors.



54, 58.869, 1.262



58, 76.251, 5.465



56, 57.390, 36.228



43, 5.179, 352.492



37, 63.997, 14.847



6, 24.117, 3.379

Inverse Universe

The Inverse Universe completely reimagines the original color for something new.



54, 58.869, 1.262



58, 76.251, 5.465



75, 33.895, 214.692



43, 5.179, 352.492



37, 63.997, 14.847



6, 24.117, 3.379

Previews

White Background



This preview shows how the CIELCh color 54, 58.872, 1.260 looks on a white background.

Color Contrast Check

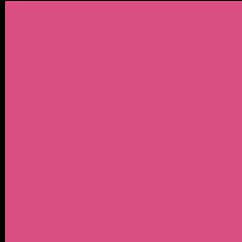
Large Text (above 18pt) WCAG AA ✓ Pass

Any Text WCAG AA ✗ Fail

Large Text (above 18pt) WCAG AAA ✗ Fail

Any Text WCAG AAA ✗ Fail

Black Background



This preview shows how the CIELCh color 54, 58.872, 1.260 looks on a black background.

Color Contrast Check

Large Text (above 18pt) WCAG AA ✓ Pass

Any Text WCAG AA ✓ Pass

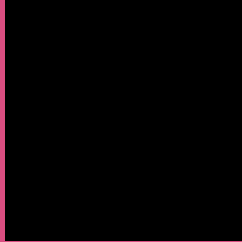
Large Text (above 18pt) WCAG AAA ✓ Pass

Any Text WCAG AAA × Fail

If you want to check with other color combinations, try the [Color Contrast Checker](#).

CIELCh 54, 58.872, 1.260

Background



This preview shows how black text looks on a background with the CIELCh color 54, 58.872, 1.260.

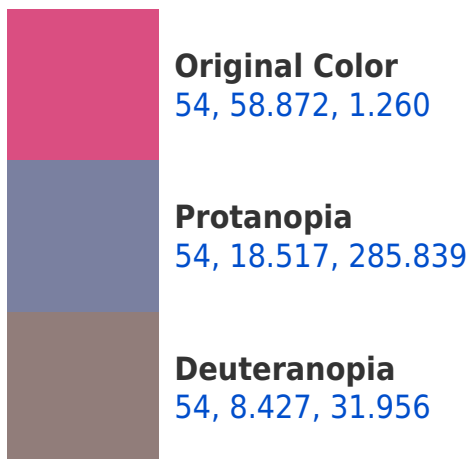


This preview shows how white text looks on a background with the CIELCh color 54, 58.872, 1.260.

Color Blindness Simulation

Color vision deficiency is a very complex topic, and I could not describe the different causes any better than Wikipedia does, so if you want to learn more, you should check out their [article about color blindness](#).

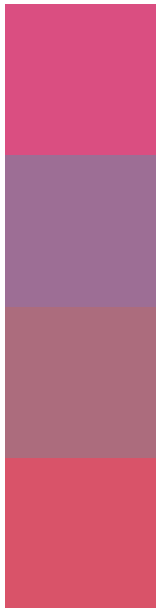
Dichromacy





Tritanopia
54, 56.526, 24.350

Trichromacy



Original Color
54, 58.872, 1.260

Protanomaly
52, 28.704, 331.329

Deuteranomaly
53, 27.844, 2.756

Tritanomaly
54, 56.376, 16.030

Monochromacy



Original Color
54, 58.872, 1.260

Achromatopsia
53, 0.007, 296.813

Achromatomaly
52, 22.708, 355.250

CSS Examples

Text

The CSS property to change the color of the text to CIELCh 54, 58.872, 1.260 is called "color". The color property can be set on classes, ids or directly on the HTML element.

This example shows how text in the color `rgb(218, 78, 129)` looks like.

```
.text, #text, p{  
    color:rgb(218, 78, 129)  
}
```

If you want to add a text shadow in that color use the text-shadow property, you can generate a text shadow directly with our [CSS Text Shadow Generator](#).

Here you see how black text with a 4 pixel rgb(218, 78, 129) colored shadow looks like.

```
.shadow{ text-shadow: 4px 4px 2px rgb(218, 78, 129) }
```

Border

The CSS property to change the border of an element to CIELCh 54, 58.872, 1.260 is called "border". The border property can be set on classes, ids or directly on the HTML element.

This example shows the color as border, it can be applied via the CSS property "border" or "border-color".

```
.border, #border, table{ border:4px solid rgb(218, 78, 129) }
```

If only the border color should be changed use the property border-color.

```
.border{ border-color:rgb(218, 78, 129) }
```

If you want to add a box shadow in that color use:

Here you see how a box with a 4 pixel rgb(218, 78, 129) colored shadow looks like.

```
.boxshadow{ -moz-box-shadow:4px 4px 4px  
4px rgb(218, 78, 129); -webkit-box-  
shadow:4px 4px 4px 4px rgb(218, 78, 129);  
box-shadow:4px 4px 4px 4px rgb(218, 78,  
129) }
```

Background

The CSS property to change the background color of an element to CIELCh 54, 58.872, 1.260 is called "background". The background property can be set on classes, ids or directly on the HTML element.

```
.background, #background, body{  
background: rgb(218, 78, 129) }
```

If only the background color should be changed can be used:

```
.background{ background-color: rgb(218, 78,  
129) }
```

This example shows the color as background, it is applied via the CSS property "background".

To optimize and compress your CSS code, you can use our [online CSS compressor and optimizer](#) based on csstidy. If you want to create a linear or radial gradient as background or border, check our [CSS Gradient Generator](#).

Hey! You found this booklet interesting? Support Converting Colors with the new Membership Option!

The pro membership hides all ads, plus gives you double the colors in the color bucket, and more awesome pro features!

[Learn more, Memberships starting at \\$2.50/m!](#)

**Follow me
on Twitter!**

@ConvertingColor