

Converting Colors

CIELCh(54, 67.694, 0.861)

Have a look what the booklet for
CIELCh(54, 67.694, 0.861) contains.

CIELCh(54, 67.644, 1.015)	3
<i>Conversions</i>	4
<i>Details</i>	6
<i>Harmonies</i>	11
<i>Previews</i>	20
<i>Color Blindness Simulation</i>	23
<i>CSS Examples</i>	26

Color

CIELCh(54, 67.644, 1.015)

Conversions

Conversions Part 1

Format	Color
Hex	E64082
RGB	230, 64, 130
RGB Percent	90%, 25%, 51%
CMY	0.0997, 0.7507, 0.4915
CMYK	0.00, 0.72, 0.44, 0.10
HSL	336°, 77%, 57%
HSV	336°, 72%, 90%
XYZ	38.3150, 21.9746, 23.2210
YIQ	121.1580, 77.7500, 55.7180

Conversions

Conversions Part 2

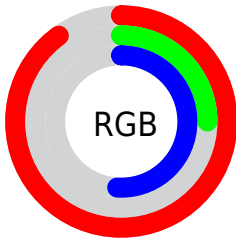
Format	Color
R_{YB}	230, 64, 130
Decimal	15089794
CIE _{Lab}	54.00, 67.63, 1.20
CIE _{LCh}	54, 67.644, 1.015
Yxy	21.9746, 0.4588, 0.2631
Android (android.graphics.Color)	4293279874 (0xFFE64082)
YUV	121.1580, 4.3591, 95.4544
Hunter-Lab	46.8770, 63.8625, 3.4441

Details

The CIELCh color **54, 67.644, 1.015** is a dark color, and the websafe version is hex **CC3366**. The color can be described as middle muted rose. A complement of this color would be **82, 60.625, 160.422**, and the grayscale version is **51, 0.007, 296.813**.

A 20% lighter version of the original color is **69, 56.517, 352.497**, and **36, 62.133, 3.652** is the 20% darker color. If you saturate the color by 10%, you get **51, 73.099, 4.458**, and if you desaturate by 10%, it is **58, 60.364, 358.309**.

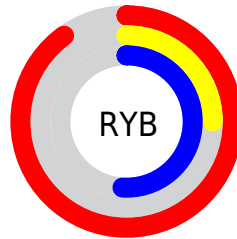
Distribution



Red (90%)

Green (25%)

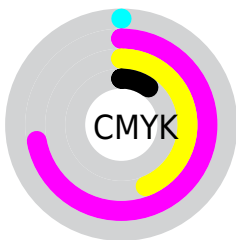
Blue (51%)



Red (90%)

Yellow (25%)

Blue (51%)

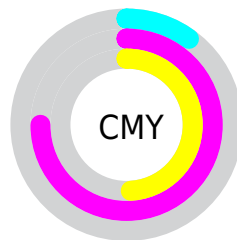


Cyan (0%)

Magenta (72%)

Yellow (44%)

Black (10%)



Cyan (10%)

Magenta (75%)

Yellow (49%)

Brightness & Saturation Gradients

These gradients show how the CIELCh color 54, 67.644, 1.015 changes by changing the brightness by 10 percent. The first figure shows a shift by +10% for each color and the second figure -10%.

Similar to the brightness gradients but the following saturation gradients show a change of the CIELCh color 54, 67.644, 1.015 by changing the saturation by 10% instead.

 54, 67.644, 1.015  54, 67.644, 1.015

 100, 67.644, 1.015  44, 67.644, 1.015

 74, 67.644, 1.015  34, 67.644, 1.015



 84, 67.644, 1.015  24, 67.644, 1.015

 94, 67.644, 1.015  14, 67.644, 1.015

 4, 67.644, 1.015

 0, 67.644, 1.015

 54, 67.644, 1.015  54, 67.644, 1.015

 51, 73.099, 4.458  58, 60.364,
358.309

 50, 76.641, 8.798

49, 78.492, 12.671

62, 51.682,
356.157

67, 42.100,
354.411

72, 32.073,
352.960

78, 21.944,
351.722

84, 11.943,
350.637

90, 2.208, 349.515

96, 7.189, 168.967

98, 8.698, 195.667

Harmonies

Complementary

The Complementary color scheme is a pair of colors which are on the opposite of each other on the color wheel.



54, 67.644, 1.015



82, 60.625, 160.422

Rectangle

The Rectangle color scheme consists of four colors that form a rectangle on the color wheel.



54, 67.644, 1.015



54, 67.644, 51.015



54, 67.644, 181.015



54, 67.644, 231.015

Sweetspot

The Sweet Spot groups the original color and five complimentary colors.



54, 67.640, 1.016



86, 23.559, 351.701



48, 94.582, 315.291



44, 15.878, 352.020



0, 0.000, 0.000



53, 0.007, 296.813

Same Dimension

The Same Dimension uses a secret algorithm to generate beautiful new colors.



54, 67.640, 1.016



56, 81.376, 6.593



55, 70.218, 35.839



45, 5.485, 350.344



38, 64.898, 11.713



7, 26.902, 2.421

Inverse Universe

The Inverse Universe completely reimagines the original color for something new.



54, 67.640, 1.016



56, 81.376, 6.593



79, 38.316, 210.485



45, 5.485, 350.344



38, 64.898, 11.713



7, 26.902, 2.421

Previews

White Background



This preview shows how the CIELCh color 54, 67.644, 1.015 looks on a white background.

Color Contrast Check

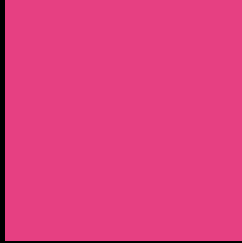
Large Text (above 18pt) WCAG AA ✓ Pass

Any Text WCAG AA ✗ Fail

Large Text (above 18pt) WCAG AAA ✗ Fail

Any Text WCAG AAA ✗ Fail

Black Background



This preview shows how the CIELCh color 54, 67.644, 1.015 looks on a black background.

Color Contrast Check

Large Text (above 18pt) WCAG AA ✓ Pass

Any Text WCAG AA ✓ Pass

Large Text (above 18pt) WCAG AAA ✓ Pass

Any Text WCAG AAA × Fail

If you want to check with other color combinations, try the [Color Contrast Checker](#).

CIELCh 54, 67.644, 1.015

Background



This preview shows how black text looks on a background with the CIELCh color 54, 67.644, 1.015.



This preview shows how white text looks on a background with the CIELCh color 54, 67.644, 1.015.

Color Blindness Simulation

Color vision deficiency is a very complex topic, and I could not describe the different causes any better than Wikipedia does, so if you want to learn more, you should check out their [article about color blindness](#).

Dichromacy



Original Color

54, 67.644, 1.015

Protanopia

54, 23.729, 285.608

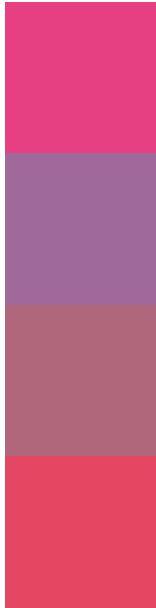
Deuteranopia

54, 8.589, 35.641



Tritanopia
54, 65.764, 27.618

Trichromacy



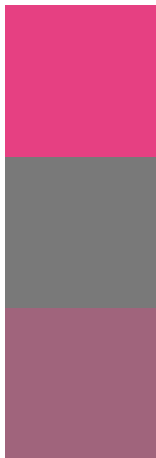
Original Color
54, 67.644, 1.015

Protanomaly
52, 35.071, 328.394

Deuteranomaly
52, 31.948, 1.869

Tritanomaly
54, 64.725, 17.677

Monochromacy



Original Color
54, 67.644, 1.015

Achromatopsia
51, 0.007, 296.813

Achromatomaly
50, 27.830, 353.424

CSS Examples

Text

The CSS property to change the color of the text to CIELCh 54, 67.644, 1.015 is called "color". The color property can be set on classes, ids or directly on the HTML element.

This example shows how text in the color `rgb(230, 64, 130)` looks like.

```
.text, #text, p{  
    color:rgb(230, 64, 130)  
}
```

If you want to add a text shadow in that color use the text-shadow property, you can generate a text shadow directly with our [CSS Text Shadow Generator](#).

Here you see how black text with a 4 pixel rgb(230, 64, 130) colored shadow looks like.

```
.shadow{ text-shadow: 4px 4px 2px rgb(230, 64, 130) }
```

Border

The CSS property to change the border of an element to CIELCh 54, 67.644, 1.015 is called "border". The border property can be set on classes, ids or directly on the HTML element.

This example shows the color as border, it can be applied via the CSS property "border" or "border-color".

```
.border, #border, table{ border:4px solid rgb(230, 64, 130) }
```

If only the border color should be changed use the property border-color.

```
.border{ border-color:rgb(230, 64, 130) }
```

If you want to add a box shadow in that color use:

Here you see how a box with a 4 pixel rgb(230, 64, 130) colored shadow looks like.

```
.boxshadow{ -moz-box-shadow:4px 4px 4px  
4px rgb(230, 64, 130); -webkit-box-  
shadow:4px 4px 4px 4px rgb(230, 64, 130);  
box-shadow:4px 4px 4px 4px rgb(230, 64,  
130) }
```

Background

The CSS property to change the background color of an element to CIELCh 54, 67.644, 1.015 is called "background". The background property can be set on classes, ids or directly on the HTML element.

```
.background, #background, body{  
background: rgb(230, 64, 130) }
```

If only the background color should be changed can be used:

```
.background{ background-color: rgb(230, 64,  
130) }
```

This example shows the color as background, it is applied via the CSS property "background".

To optimize and compress your CSS code, you can use our [online CSS compressor and optimizer](#) based on csstidy. If you want to create a linear or radial gradient as background or border, check our [CSS Gradient Generator](#).

Hey! You found this booklet interesting? Support Converting Colors with the new Membership Option!

The pro membership hides all ads, plus gives you double the colors in the color bucket, and more awesome pro features!

[Learn more, Memberships starting at \\$2.50/m!](#)

**Follow me
on Twitter!**

@ConvertingColor