

Converting Colors

CIELCh(54, 72.027, 15.764)

Have a look what the booklet for
CIELCh(54, 72.027, 15.764) contains.

CIELCh(54, 71.780, 15.904)	3
<i>Conversions</i>	4
<i>Details</i>	6
<i>Harmonies</i>	11
<i>Previews</i>	20
<i>Color Blindness Simulation</i>	23
<i>CSS Examples</i>	26

Color

CIELCh(54, 71.780, 15.904)

Conversions

Conversions Part 1

Format	Color
Hex	ED3A63
RGB	237, 58, 99
RGB Percent	93%, 23%, 39%
CMY	0.0700, 0.7719, 0.6113
CMYK	0.00, 0.75, 0.58, 0.07
HSL	346°, 83%, 58%
HSV	346°, 75%, 93%
XYZ	38.7521, 21.9746, 14.0311
YIQ	116.1950, 93.5230, 50.6990

Conversions

Conversions Part 2

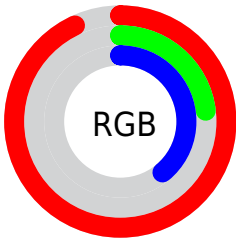
Format	Color
R_{YB}	237, 58, 99
Decimal	15546979
CIE _{Lab}	54.00, 69.03, 19.67
CIE _{LCh}	54, 71.780, 15.904
Yxy	21.9746, 0.5184, 0.2939
Android (android.graphics.Color)	4293737059 (0xFFED3A63)
YUV	116.1950, -8.4771, 105.9460
Hunter-Lab	46.8770, 65.5267, 15.0674

Details

The CIELCh color **54, 71.780, 15.904** is a dark color, and the websafe version is hex **FF3366**. The color can be described as dark washed rose. A complement of this color would be **85, 53.792, 172.231**, and the grayscale version is **49, 0.007, 296.813**.

A 20% lighter version of the original color is **67, 54.835, 9.892**, and **36, 65.603, 20.420** is the 20% darker color. If you saturate the color by 10%, you get **52, 78.774, 20.419**, and if you desaturate by 10%, it is **57, 63.502, 12.271**.

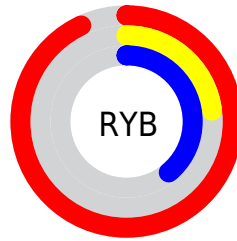
Distribution



Red (93%)

Green (23%)

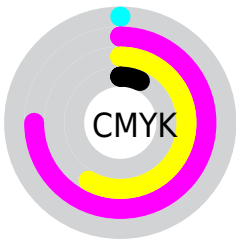
Blue (39%)



Red (93%)

Yellow (23%)

Blue (39%)

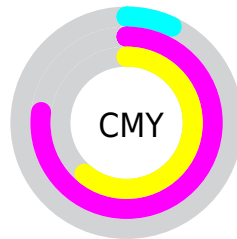


Cyan (0%)

Magenta (75%)

Yellow (58%)

Black (7%)



Cyan (7%)

Magenta (77%)

Yellow (61%)


Brightness & Saturation Gradients


These gradients show how the CIELCh color 54, 71.780, 15.904 changes by changing the brightness by 10 percent. The first figure shows a shift by +10% for each color and the second figure -10%.

Similar to the brightness gradients but the following saturation gradients show a change of the CIELCh color 54, 71.780, 15.904 by changing the saturation by 10% instead.

 54, 71.780, 15.904

 54, 71.780, 15.904

 100, 71.780,
15.904

 44, 71.780, 15.904

 74, 71.780, 15.904

 34, 71.780, 15.904

 84, 71.780, 15.904

 24, 71.780, 15.904

 94, 71.780, 15.904

 14, 71.780, 15.904

 4, 71.780, 15.904

 0, 71.780, 15.904

 54, 71.780, 15.904

 54, 71.780, 15.904

 52, 78.774, 20.419

 57, 63.502, 12.271

 50, 84.565, 25.732

 62, 54.195, 9.402

50, 87.029, 28.185

67, 44.264, 7.135

72, 34.110, 5.319

78, 24.048, 3.836

84, 14.283, 2.593

90, 4.929, 1.477

97, 3.967, 180.840

99, 6.129, 199.125

Harmonies

Complementary

The Complementary color scheme is a pair of colors which are on the opposite of each other on the color wheel.



54, 71.780, 15.904



85, 53.792, 172.231

Rectangle

The Rectangle color scheme consists of four colors that form a rectangle on the color wheel.



54, 71.780, 15.904



54, 71.780, 65.904



54, 71.780, 195.904



54, 71.780, 245.904

Sweetspot

The Sweet Spot groups the original color and five complimentary colors.



54, 71.776, 15.906



85, 22.916, 3.522



53, 99.513, 320.310



43, 15.982, 4.006



0, 0.000, 0.000



53, 0.007, 296.813

Same Dimension

The Same Dimension uses a secret algorithm to generate beautiful new colors.



54, 71.776, 15.906



54, 86.959, 23.469



60, 69.403, 46.333



46, 5.124, 1.922



38, 70.503, 27.127



7, 27.859, 13.128

Inverse Universe

The Inverse Universe completely reimagines the original color for something new.



54, 71.776, 15.906



54, 86.959, 23.469



72, 39.038, 239.904



46, 5.124, 1.922



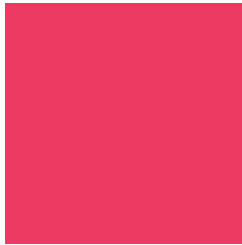
38, 70.503, 27.127



7, 27.859, 13.128

Previews

White Background



This preview shows how the CIELCh color 54, 71.780, 15.904 looks on a white background.

Color Contrast Check

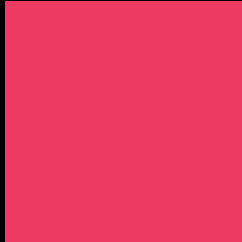
Large Text (above 18pt) WCAG AA ✓ Pass

Any Text WCAG AA ✗ Fail

Large Text (above 18pt) WCAG AAA ✗ Fail

Any Text WCAG AAA ✗ Fail

Black Background



This preview shows how the CIELCh color 54, 71.780, 15.904 looks on a black background.

Color Contrast Check

Large Text (above 18pt) WCAG AA ✓ Pass

Any Text WCAG AA ✓ Pass

Large Text (above 18pt) WCAG AAA ✓ Pass

Any Text WCAG AAA × Fail

If you want to check with other color combinations, try the [Color Contrast Checker](#).

CIELCh 54, 71.780, 15.904

Background



This preview shows how black text looks on a background with the CIELCh color 54, 71.780, 15.904.



This preview shows how white text looks on a background with the CIELCh color 54, 71.780, 15.904.

Color Blindness Simulation

Color vision deficiency is a very complex topic, and I could not describe the different causes any better than Wikipedia does, so if you want to learn more, you should check out their [article about color blindness](#).

Dichromacy



Original Color

54, 71.780, 15.904

Protanopia

54, 1.914, 314.693

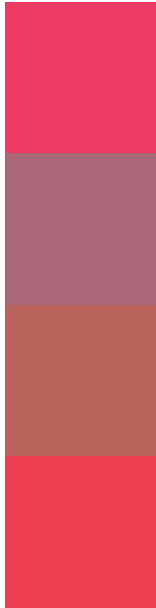
Deuteranopia

54, 23.934, 73.488



Tritanopia
54, 75.104, 30.334

Trichromacy



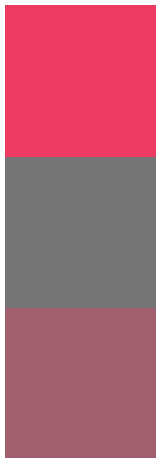
Original Color
54, 71.780, 15.904

Protanomaly
51, 29.198, 3.985

Deuteranomaly
52, 38.064, 30.027

Tritanomaly
54, 73.141, 25.511

Monochromacy



Original Color
54, 71.780, 15.904

Achromatopsia
49, 0.007, 296.813

Achromatomaly
48, 28.543, 5.865

CSS Examples

Text

The CSS property to change the color of the text to CIELCh 54, 71.780, 15.904 is called "color". The color property can be set on classes, ids or directly on the HTML element.

This example shows how text in the color `rgb(237, 58, 99)` looks like.

```
.text, #text, p{  
    color:rgb(237, 58, 99)  
}
```

If you want to add a text shadow in that color use the text-shadow property, you can generate a text shadow directly with our [CSS Text Shadow Generator](#).

Here you see how black text with a 4 pixel rgb(237, 58, 99) colored shadow looks like.

```
.shadow{ text-shadow: 4px 4px 2px rgb(237, 58, 99) }
```

Border

The CSS property to change the border of an element to CIELCh 54, 71.780, 15.904 is called "border". The border property can be set on classes, ids or directly on the HTML element.

This example shows the color as border, it can be applied via the CSS property "border" or "border-color".

```
.border, #border, table{ border:4px solid rgb(237, 58, 99) }
```

If only the border color should be changed use the property `border-color`.

```
.border{ border-color:rgb(237, 58, 99) }
```

If you want to add a box shadow in that color use:

Here you see how a box with a 4 pixel `rgb(237, 58, 99)` colored shadow looks like.

```
.boxshadow{ -moz-box-shadow:4px 4px 4px  
4px rgb(237, 58, 99); -webkit-box-  
shadow:4px 4px 4px 4px rgb(237, 58, 99);  
box-shadow:4px 4px 4px 4px rgb(237, 58,  
99) }
```

Background

The CSS property to change the background color of an element to CIELCh 54, 71.780, 15.904 is called "background". The background property can be set on classes, ids or directly on the HTML element.

```
.background, #background, body{  
background: rgb(237, 58, 99) }
```

If only the background color should be changed can be used:

```
.background{ background-color: rgb(237, 58,  
99) }
```

This example shows the color as background, it is applied via the CSS property "background".

To optimize and compress your CSS code, you can use our [online CSS compressor and optimizer](#) based on csstidy. If you want to create a linear or radial gradient as background or border, check our [CSS Gradient Generator](#).

Hey! You found this booklet interesting? Support Converting Colors with the new Membership Option!

The pro membership hides all ads, plus gives you double the colors in the color bucket, and more awesome pro features!

[Learn more, Memberships starting at \\$2.50/m!](#)

**Follow me
on Twitter!**

@ConvertingColor