

Converting Colors

CIELCh(54, 74.137, 15.373)

Have a look what the booklet for
CIELCh(54, 74.137, 15.373) contains.

CIELCh(54, 73.993, 15.540)	3
<i>Conversions</i>	4
<i>Details</i>	6
<i>Harmonies</i>	11
<i>Previews</i>	20
<i>Color Blindness Simulation</i>	23
<i>CSS Examples</i>	26

Color

CIELCh(54, 73.993, 15.540)

Conversions

Conversions Part 1

Format	Color
Hex	F03563
RGB	240, 53, 99
RGB Percent	94%, 21%, 39%
CMY	0.0588, 0.7921, 0.6117
CMYK	0.00, 0.78, 0.59, 0.06
HSL	345°, 86%, 57%
HSV	345°, 78%, 94%
XYZ	39.4637, 21.9746, 13.9671
YIQ	114.1570, 96.6860, 53.9500

Conversions

Conversions Part 2

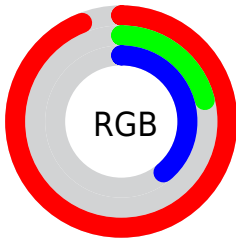
Format	Color
R_{YB}	240, 53, 99
Decimal	15742307
CIE _{Lab}	54.00, 71.29, 19.82
CIE _{LCh}	54, 73.993, 15.540
Yxy	21.9746, 0.5234, 0.2914
Android (android.graphics.Color)	4293932387 (0xFFFF03563)
YUV	114.1570, -7.4724, 110.3643
Hunter-Lab	46.8770, 68.2364, 15.1484

Details

The CIELCh color **54, 73.993, 15.540** is a dark color, and the websafe version is hex **FF3366**. The color can be described as middle washed rose. A complement of this color would be **85, 56.307, 170.347**, and the grayscale version is **48, 0.006, 296.813**.

A 20% lighter version of the original color is **67, 56.092, 8.876**, and **37, 66.626, 20.967** is the 20% darker color. If you saturate the color by 10%, you get **52, 80.462, 20.248**, and if you desaturate by 10%, it is **57, 66.144, 11.735**.

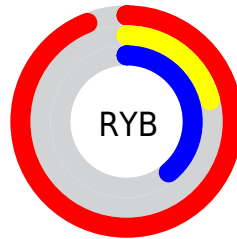
Distribution



Red (94%)

Green (21%)

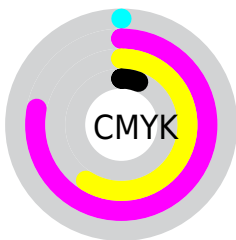
Blue (39%)



Red (94%)

Yellow (21%)

Blue (39%)

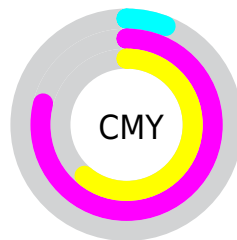


Cyan (0%)

Magenta (78%)

Yellow (59%)

Black (6%)



Cyan (6%)

Magenta (79%)

Yellow (61%)


Brightness & Saturation Gradients

These gradients show how the CIELCh color 54, 73.993, 15.540 changes by changing the brightness by 10 percent. The first figure shows a shift by +10% for each color and the second figure -10%.

Similar to the brightness gradients but the following saturation gradients show a change of the CIELCh color 54, 73.993, 15.540 by changing the saturation by 10% instead.

 54, 73.993, 15.540

 54, 73.993, 15.540

 100, 73.993,
15.540

 44, 73.993, 15.540

 74, 73.993, 15.540

 34, 73.993, 15.540

 84, 73.993, 15.540

 24, 73.993, 15.540

 94, 73.993, 15.540

 14, 73.993, 15.540

 4, 73.993, 15.540

 0, 73.993, 15.540

 54, 73.993, 15.540

 54, 73.993, 15.540

 52, 80.462, 20.248

 57, 66.144, 11.735

 51, 85.787, 25.709

 61, 57.106, 8.727

51, 86.894, 26.836

66, 47.274, 6.353

72, 37.078, 4.456

77, 26.871, 2.909

83, 16.894, 1.617

90, 7.290, 0.490

96, 1.875, 179.938

99, 5.160, 199.207

Harmonies

Complementary

The Complementary color scheme is a pair of colors which are on the opposite of each other on the color wheel.



54, 73.993, 15.540



85, 56.307, 170.347

Rectangle

The Rectangle color scheme consists of four colors that form a rectangle on the color wheel.



54, 73.993, 15.540



54, 73.993, 65.540



54, 73.993, 195.540



54, 73.993, 245.540

Sweetspot

The Sweet Spot groups the original color and five complimentary colors.



54, 73.989, 15.542



85, 23.043, 2.258



52, 102.587, 319.763



43, 16.063, 2.741



0, 0.000, 0.000



53, 0.007, 296.813

Same Dimension

The Same Dimension uses a secret algorithm to generate beautiful new colors.



54, 73.989, 15.542



54, 87.352, 23.135



60, 73.355, 45.287



47, 5.252, 0.662



38, 70.533, 25.785



8, 28.880, 13.337

Inverse Universe

The Inverse Universe completely reimagines the original color for something new.



54, 73.989, 15.542



54, 87.352, 23.135



73, 39.696, 237.781



47, 5.252, 0.662



38, 70.533, 25.785



8, 28.880, 13.337

Previews

White Background



This preview shows how the CIELCh color 54, 73.993, 15.540 looks on a white background.

Color Contrast Check

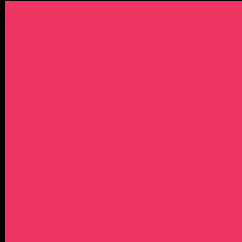
Large Text (above 18pt) WCAG AA ✓ Pass

Any Text WCAG AA ✗ Fail

Large Text (above 18pt) WCAG AAA ✗ Fail

Any Text WCAG AAA ✗ Fail

Black Background



This preview shows how the CIELCh color 54, 73.993, 15.540 looks on a black background.

Color Contrast Check

Large Text (above 18pt) WCAG AA ✓ Pass

Any Text WCAG AA ✓ Pass

Large Text (above 18pt) WCAG AAA ✓ Pass

Any Text WCAG AAA × Fail

If you want to check with other color combinations, try the [Color Contrast Checker](#).

CIELCh 54, 73.993, 15.540

Background



This preview shows how black text looks on a background with the CIELCh color 54, 73.993, 15.540.

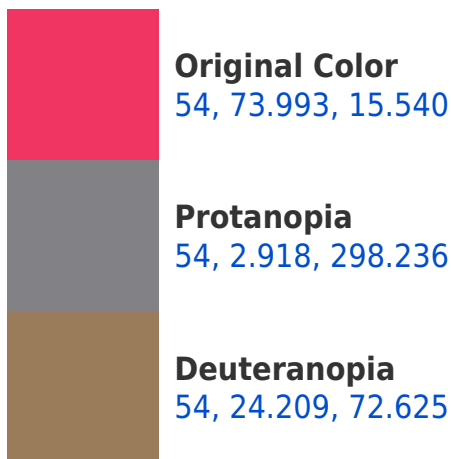


This preview shows how white text looks on a background with the CIELCh color 54, 73.993, 15.540.

Color Blindness Simulation

Color vision deficiency is a very complex topic, and I could not describe the different causes any better than Wikipedia does, so if you want to learn more, you should check out their [article about color blindness](#).

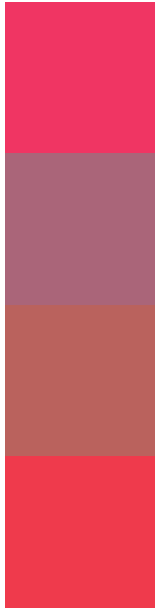
Dichromacy





Tritanopia
54, 77.955, 31.429

Trichromacy



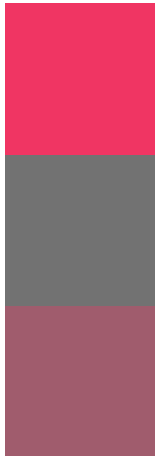
Original Color
54, 73.993, 15.540

Protanomaly
51, 30.388, 1.541

Deuteranomaly
52, 39.595, 28.507

Tritanomaly
54, 75.986, 25.993

Monochromacy



Original Color
54, 73.993, 15.540

Achromatopsia
48, 0.006, 296.813

Achromatomaly
47, 30.033, 4.761

CSS Examples

Text

The CSS property to change the color of the text to CIELCh 54, 73.993, 15.540 is called "color". The color property can be set on classes, ids or directly on the HTML element.

This example shows how text in the color `rgb(240, 53, 99)` looks like.

```
.text, #text, p{  
    color:rgb(240, 53, 99)  
}
```

If you want to add a text shadow in that color use the text-shadow property, you can generate a text shadow directly with our [CSS Text Shadow Generator](#).

Here you see how black text with a 4 pixel rgb(240, 53, 99) colored shadow looks like.

```
.shadow{ text-shadow: 4px 4px 2px rgb(240, 53, 99) }
```

Border

The CSS property to change the border of an element to CIELCh 54, 73.993, 15.540 is called "border". The border property can be set on classes, ids or directly on the HTML element.

This example shows the color as border, it can be applied via the CSS property "border" or "border-color".

```
.border, #border, table{ border:4px solid rgb(240, 53, 99) }
```

If only the border color should be changed use the property border-color.

```
.border{ border-color:rgb(240, 53, 99) }
```

If you want to add a box shadow in that color use:

Here you see how a box with a 4 pixel rgb(240, 53, 99) colored shadow looks like.

```
.boxshadow{ -moz-box-shadow:4px 4px 4px  
4px rgb(240, 53, 99); -webkit-box-  
shadow:4px 4px 4px 4px rgb(240, 53, 99);  
box-shadow:4px 4px 4px 4px rgb(240, 53,  
99) }
```

Background

The CSS property to change the background color of an element to CIELCh 54, 73.993, 15.540 is called "background". The background property can be set on classes, ids or directly on the HTML element.

```
.background, #background, body{  
background: rgb(240, 53, 99) }
```

If only the background color should be changed can be used:

```
.background{ background-color: rgb(240, 53,  
99) }
```

This example shows the color as background, it is applied via the CSS property "background".

To optimize and compress your CSS code, you can use our [online CSS compressor and optimizer](#) based on csstidy. If you want to create a linear or radial gradient as background or border, check our [CSS Gradient Generator](#).

Hey! You found this booklet interesting? Support Converting Colors with the new Membership Option!

The pro membership hides all ads, plus gives you double the colors in the color bucket, and more awesome pro features!

[Learn more, Memberships starting at \\$2.50/m!](#)

**Follow me
on Twitter!**

@ConvertingColor