

Converting Colors

CIELCh(54, 74.443, 10.442)

Have a look what the booklet for
CIELCh(54, 74.443, 10.442) contains.

CIELCh(54, 74.537, 10.301)	3
<i>Conversions</i>	4
<i>Details</i>	6
<i>Harmonies</i>	11
<i>Previews</i>	20
<i>Color Blindness Simulation</i>	23
<i>CSS Examples</i>	26

Color

CIELCh(54, 74.537, 10.301)

Conversions

Conversions Part 1

Format	Color
Hex	F1316E
RGB	241, 49, 110
RGB Percent	95%, 19%, 43%
CMY	0.0555, 0.8086, 0.5691
CMYK	0.00, 0.80, 0.54, 0.06
HSL	341°, 87%, 57%
HSV	341°, 80%, 94%
XYZ	40.1171, 21.9746, 16.8426
YIQ	113.3620, 94.8510, 59.6750

Conversions

Conversions Part 2

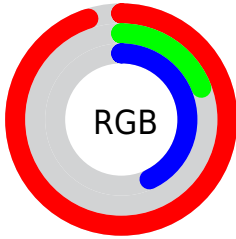
Format	Color
R_{YB}	241, 49, 110
Decimal	15806830
CIE _{Lab}	54.00, 73.34, 13.33
CIE _{LCh}	54, 74.537, 10.301
Yxy	21.9746, 0.5082, 0.2784
Android (android.graphics.Color)	4293996910 (0xFFFF1316E)
YUV	113.3620, -1.6575, 111.9385
Hunter-Lab	46.8770, 70.7246, 11.5114

Details

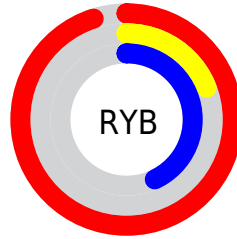
The CIELCh color **54, 74.537, 10.301** is a dark color, and the websafe version is hex **FF3366**. The color can be described as middle washed rose. A complement of this color would be **85, 61.840, 164.348**, and the grayscale version is **48, 0.006, 296.813**.

A 20% lighter version of the original color is **66, 58.089, 1.502**, and **38, 65.475, 15.937** is the 20% darker color. If you saturate the color by 10%, you get **52, 79.675, 14.932**, and if you desaturate by 10%, it is **57, 67.717, 6.603**.

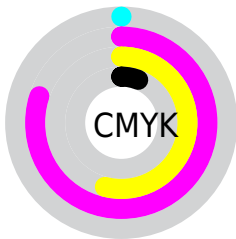
Distribution



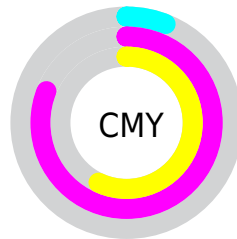
- Red (95%)
- Green (19%)
- Blue (43%)



- Red (95%)
- Yellow (19%)
- Blue (43%)



- Cyan (0%)
- Magenta (80%)
- Yellow (54%)
- Black (6%)



- Cyan (6%)
- Magenta (81%)
- Yellow (57%)


Brightness & Saturation Gradients

These gradients show how the CIELCh color 54, 74.537, 10.301 changes by changing the brightness by 10 percent. The first figure shows a shift by +10% for each color and the second figure -10%.

Similar to the brightness gradients but the following saturation gradients show a change of the CIELCh color 54, 74.537, 10.301 by changing the saturation by 10% instead.

 54, 74.537, 10.301

 54, 74.537, 10.301

 100, 74.537,
10.301

 44, 74.537, 10.301

 74, 74.537, 10.301

 34, 74.537, 10.301

 84, 74.537, 10.301

 24, 74.537, 10.301

 94, 74.537, 10.301

 14, 74.537, 10.301

 4, 74.537, 10.301

 0, 74.537, 10.301

 54, 74.537, 10.301

 54, 74.537, 10.301

 52, 79.675, 14.932

 57, 67.717, 6.603

 51, 83.605, 20.368

 61, 59.372, 3.690

■ 51, 83.714, 20.513

■ 66, 49.917, 1.386

■ 71, 39.834,
359.532

■ 77, 29.532,
358.007

■ 83, 19.309,
356.721

■ 89, 9.349, 355.598

■ 95, 0.246, 176.911

■ 99, 4.879, 199.232

Harmonies

Complementary

The Complementary color scheme is a pair of colors which are on the opposite of each other on the color wheel.



54, 74.537, 10.301



85, 61.840, 164.348

Rectangle

The Rectangle color scheme consists of four colors that form a rectangle on the color wheel.



54, 74.537, 10.301



54, 74.537, 60.301



54, 74.537, 190.301



54, 74.537, 240.301

Sweetspot

The Sweet Spot groups the original color and five complimentary colors.



54, 74.533, 10.303



84, 24.772, 357.255



49, 104.945, 317.186



43, 17.107, 357.722



0, 0.000, 0.000



53, 0.007, 296.813

Same Dimension

The Same Dimension uses a secret algorithm to generate beautiful new colors.



54, 74.533, 10.303



54, 85.911, 18.474



57, 78.827, 40.627



47, 5.434, 355.570



39, 67.946, 19.441



8, 28.763, 9.184

Inverse Universe

The Inverse Universe completely reimagines the original color for something new.



54, 74.533, 10.303



54, 85.911, 18.474



78, 39.775, 222.997



47, 5.434, 355.570



39, 67.946, 19.441



8, 28.763, 9.184

Previews

White Background



This preview shows how the CIELCh color 54, 74.537, 10.301 looks on a white background.

Color Contrast Check

Large Text (above 18pt) WCAG AA ✓ Pass

Any Text WCAG AA ✗ Fail

Large Text (above 18pt) WCAG AAA ✗ Fail

Any Text WCAG AAA ✗ Fail

Black Background



This preview shows how the CIELCh color 54, 74.537, 10.301 looks on a black background.

Color Contrast Check

Large Text (above 18pt) WCAG AA ✓ Pass

Any Text WCAG AA ✓ Pass

Large Text (above 18pt) WCAG AAA ✓ Pass

Any Text WCAG AAA × Fail

If you want to check with other color combinations, try the [Color Contrast Checker](#).

CIELCh 54, 74.537, 10.301

Background



This preview shows how black text looks on a background with the CIELCh color 54, 74.537, 10.301.



This preview shows how white text looks on a background with the CIELCh color 54, 74.537, 10.301.

Color Blindness Simulation

Color vision deficiency is a very complex topic, and I could not describe the different causes any better than Wikipedia does, so if you want to learn more, you should check out their [article about color blindness](#).

Dichromacy



Original Color

54, 74.537, 10.301

Protanopia

54, 12.126, 286.417

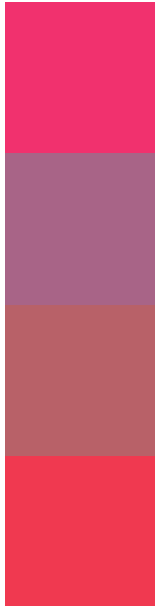
Deuteranopia

54, 18.188, 66.166



Tritanopia
54, 78.339, 31.477

Trichromacy



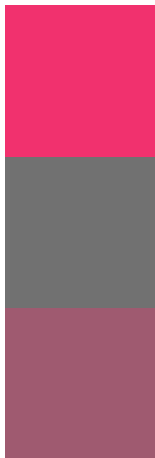
Original Color
54, 74.537, 10.301

Protanomaly
51, 33.187, 346.752

Deuteranomaly
52, 37.648, 18.592

Tritanomaly
54, 75.787, 24.294

Monochromacy



Original Color
54, 74.537, 10.301

Achromatopsia
48, 0.006, 296.813

Achromatomaly
47, 31.081, 359.894

CSS Examples

Text

The CSS property to change the color of the text to CIELCh 54, 74.537, 10.301 is called "color". The color property can be set on classes, ids or directly on the HTML element.

This example shows how text in the color `rgb(241, 49, 110)` looks like.

```
.text, #text, p{  
    color:rgb(241, 49, 110)  
}
```

If you want to add a text shadow in that color use the text-shadow property, you can generate a text shadow directly with our [CSS Text Shadow Generator](#).

Here you see how black text with a 4 pixel rgb(241, 49, 110) colored shadow looks like.

```
.shadow{ text-shadow: 4px 4px 2px rgb(241, 49, 110) }
```

Border

The CSS property to change the border of an element to CIELCh 54, 74.537, 10.301 is called "border". The border property can be set on classes, ids or directly on the HTML element.

This example shows the color as border, it can be applied via the CSS property "border" or "border-color".

```
.border, #border, table{ border:4px solid rgb(241, 49, 110) }
```

If only the border color should be changed use the property `border-color`.

```
.border{ border-color:rgb(241, 49, 110) }
```

If you want to add a box shadow in that color use:

Here you see how a box with a 4 pixel `rgb(241, 49, 110)` colored shadow looks like.

```
.boxshadow{ -moz-box-shadow:4px 4px 4px  
4px rgb(241, 49, 110); -webkit-box-  
shadow:4px 4px 4px 4px rgb(241, 49, 110);  
box-shadow:4px 4px 4px 4px rgb(241, 49,  
110) }
```

Background

The CSS property to change the background color of an element to CIELCh 54, 74.537, 10.301 is called "background". The background property can be set on classes, ids or directly on the HTML element.

```
.background, #background, body{  
background: rgb(241, 49, 110) }
```

If only the background color should be changed can be used:

```
.background{ background-color: rgb(241, 49,  
110) }
```

This example shows the color as background, it is applied via the CSS property "background".

To optimize and compress your CSS code, you can use our [online CSS compressor and optimizer](#) based on csstidy. If you want to create a linear or radial gradient as background or border, check our [CSS Gradient Generator](#).

Hey! You found this booklet interesting? Support Converting Colors with the new Membership Option!

The pro membership hides all ads, plus gives you double the colors in the color bucket, and more awesome pro features!

[Learn more, Memberships starting at \\$2.50/m!](#)

**Follow me
on Twitter!**

@ConvertingColor