

Converting Colors

CIELCh(54, 75.004, 8.175)

Have a look what the booklet for
CIELCh(54, 75.004, 8.175) contains.

CIELCh(54, 74.899, 8.302)	3
<i>Conversions</i>	4
<i>Details</i>	6
<i>Harmonies</i>	11
<i>Previews</i>	20
<i>Color Blindness Simulation</i>	23
<i>CSS Examples</i>	26

Color

CIELCh(54, 74.899, 8.302)

Conversions

Conversions Part 1

Format	Color
Hex	F12F72
RGB	241, 47, 114
RGB Percent	95%, 18%, 45%
CMY	0.0546, 0.8152, 0.5527
CMYK	0.00, 0.80, 0.53, 0.05
HSL	339°, 87%, 57%
HSV	339°, 80%, 95%
XYZ	40.3675, 21.9746, 18.0537
YIQ	112.6440, 94.1170, 61.9650

Conversions

Conversions Part 2

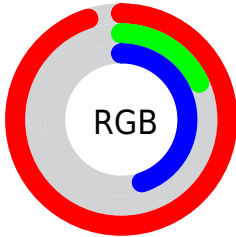
Format	Color
R_{YB}	241, 47, 114
Decimal	15806322
CIE _{Lab}	54.00, 74.11, 10.81
CIE _{LCh}	54, 74.899, 8.302
Yxy	21.9746, 0.5021, 0.2733
Android (android.graphics.Color)	4293996402 (0xFFFF12F72)
YUV	112.6440, 0.6685, 112.5682
Hunter-Lab	46.8770, 71.6778, 9.9796

Details

The CIELCh color **54, 74.899, 8.302** is a dark color, and the websafe version is hex **FF3366**. The color can be described as middle washed rose. A complement of this color would be **85, 64.083, 162.276**, and the grayscale version is **48, 0.006, 296.813**.

A 20% lighter version of the original color is **66, 59.096, 358.674**, and **38, 65.060, 13.790** is the 20% darker color. If you saturate the color by 10%, you get **52, 79.545, 12.858**, and if you desaturate by 10%, it is **57, 68.457, 4.677**.

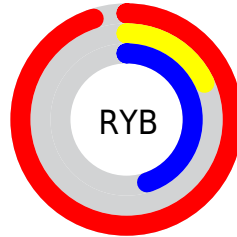
Distribution



Red (95%)

Green (18%)

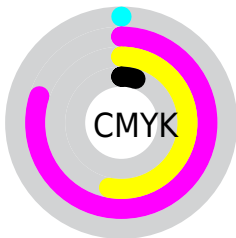
Blue (45%)



Red (95%)

Yellow (18%)

Blue (45%)

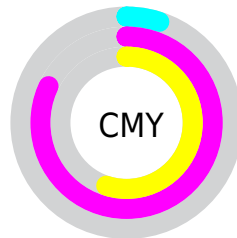


Cyan (0%)

Magenta (80%)

Yellow (53%)

Black (5%)



Cyan (5%)

Magenta (82%)

Yellow (55%)

Brightness & Saturation Gradients

These gradients show how the CIELCh color 54, 74.899, 8.302 changes by changing the brightness by 10 percent. The first figure shows a shift by +10% for each color and the second figure -10%.

Similar to the brightness gradients but the following saturation gradients show a change of the CIELCh color 54, 74.899, 8.302 by changing the saturation by 10% instead.

 54, 74.899, 8.302  54, 74.899, 8.302

 100, 74.899, 8.302  44, 74.899, 8.302

 74, 74.899, 8.302  34, 74.899, 8.302

 84, 74.899, 8.302  24, 74.899, 8.302

 94, 74.899, 8.302  14, 74.899, 8.302

 4, 74.899, 8.302

 0, 74.899, 8.302

 54, 74.899, 8.302  54, 74.899, 8.302

 52, 79.545, 12.858  57, 68.457, 4.677

 51, 82.807, 17.968  61, 60.363, 1.825

65, 51.042,
359.566

71, 40.991,
357.743

76, 30.643,
356.239

82, 20.314,
354.965

89, 10.207,
353.852

95, 0.438, 351.740

99, 4.793, 199.240

Harmonies

Complementary

The Complementary color scheme is a pair of colors which are on the opposite of each other on the color wheel.



54, 74.899, 8.302



85, 64.083, 162.276

Rectangle

The Rectangle color scheme consists of four colors that form a rectangle on the color wheel.



54, 74.899, 8.302



54, 74.899, 58.302



54, 74.899, 188.302



54, 74.899, 238.302

Sweetspot

The Sweet Spot groups the original color and five complimentary colors.



54, 74.895, 8.304



84, 25.080, 355.404



49, 105.780, 316.679



43, 17.309, 355.861



0, 0.000, 0.000



53, 0.007, 296.813

Same Dimension

The Same Dimension uses a secret algorithm to generate beautiful new colors.



54, 74.895, 8.304



54, 85.420, 16.512



56, 80.353, 39.917



47, 5.514, 353.748



39, 67.229, 16.908



8, 28.757, 7.407

Inverse Universe

The Inverse Universe completely reimagines the original color for something new.



54, 74.895, 8.304



54, 85.420, 16.512



78, 40.143, 220.135



47, 5.514, 353.748



39, 67.229, 16.908



8, 28.757, 7.407

Previews

White Background



This preview shows how the CIELCh color 54, 74.899, 8.302 looks on a white background.

Color Contrast Check

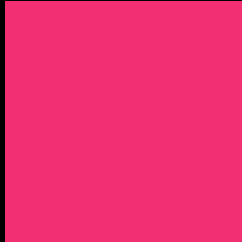
Large Text (above 18pt) WCAG AA ✓ Pass

Any Text WCAG AA × Fail

Large Text (above 18pt) WCAG AAA × Fail

Any Text WCAG AAA × Fail

Black Background



This preview shows how the CIELCh color 54, 74.899, 8.302 looks on a black background.

Color Contrast Check

Large Text (above 18pt) WCAG AA ✓ Pass

Any Text WCAG AA ✓ Pass

Large Text (above 18pt) WCAG AAA ✓ Pass

Any Text WCAG AAA × Fail

If you want to check with other color combinations, try the [Color Contrast Checker](#).

CIELCh 54, 74.899, 8.302

Background



This preview shows how black text looks on a background with the CIELCh color 54, 74.899, 8.302.



This preview shows how white text looks on a background with the CIELCh color 54, 74.899, 8.302.

Color Blindness Simulation

Color vision deficiency is a very complex topic, and I could not describe the different causes any better than Wikipedia does, so if you want to learn more, you should check out their [article about color blindness](#).

Dichromacy



Original Color

54, 74.899, 8.302

Protanopia

54, 16.177, 287.035

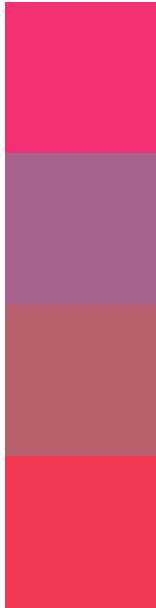
Deuteranopia

54, 16.135, 62.350



Tritanopia
54, 78.339, 31.477

Trichromacy



Original Color
54, 74.899, 8.302

Protanomaly
51, 35.364, 341.203

Deuteranomaly
51, 37.857, 14.482

Tritanomaly
54, 75.637, 23.298

Monochromacy



Original Color
54, 74.899, 8.302

Achromatopsia
48, 0.006, 296.813

Achromatomaly
47, 32.154, 358.703

CSS Examples

Text

The CSS property to change the color of the text to CIELCh 54, 74.899, 8.302 is called "color". The color property can be set on classes, ids or directly on the HTML element.

This example shows how text in the color `rgb(241, 47, 114)` looks like.

```
.text, #text, p{  
    color:rgb(241, 47, 114)  
}
```

If you want to add a text shadow in that color use the text-shadow property, you can generate a text shadow directly with our [CSS Text Shadow Generator](#).

Here you see how black text with a 4 pixel rgb(241, 47, 114) colored shadow looks like.

```
.shadow{ text-shadow: 4px 4px 2px rgb(241, 47, 114) }
```

Border

The CSS property to change the border of an element to CIELCh 54, 74.899, 8.302 is called "border". The border property can be set on classes, ids or directly on the HTML element.

This example shows the color as border, it can be applied via the CSS property "border" or "border-color".

```
.border, #border, table{ border:4px solid rgb(241, 47, 114) }
```

If only the border color should be changed use the property `border-color`.

```
.border{ border-color:rgb(241, 47, 114) }
```

If you want to add a box shadow in that color use:

Here you see how a box with a 4 pixel `rgb(241, 47, 114)` colored shadow looks like.

```
.boxshadow{ -moz-box-shadow:4px 4px 4px  
4px rgb(241, 47, 114); -webkit-box-  
shadow:4px 4px 4px 4px rgb(241, 47, 114);  
box-shadow:4px 4px 4px 4px rgb(241, 47,  
114) }
```

Background

The CSS property to change the background color of an element to CIELCh 54, 74.899, 8.302 is called "background". The background property can be set on classes, ids or directly on the HTML element.

```
.background, #background, body{  
background: rgb(241, 47, 114) }
```

If only the background color should be changed can be used:

```
.background{ background-color: rgb(241, 47,  
114) }
```

This example shows the color as background, it is applied via the CSS property "background".

To optimize and compress your CSS code, you can use our [online CSS compressor and optimizer](#) based on csstidy. If you want to create a linear or radial gradient as background or border, check our [CSS Gradient Generator](#).

Hey! You found this booklet interesting? Support Converting Colors with the new Membership Option!

The pro membership hides all ads, plus gives you double the colors in the color bucket, and more awesome pro features!

[Learn more, Memberships starting at \\$2.50/m!](#)

**Follow me
on Twitter!**

@ConvertingColor