

Converting Colors

CIELCh(54, 76.075, 1.189)

Have a look what the booklet for
CIELCh(54, 76.075, 1.189) contains.

CIELCh(54, 76.226, 1.433)	3
<i>Conversions</i>	4
<i>Details</i>	6
<i>Harmonies</i>	11
<i>Previews</i>	20
<i>Color Blindness Simulation</i>	23
<i>CSS Examples</i>	26

Color

CIELCh(54, 76.226, 1.433)

Conversions

Conversions Part 1

Format	Color
Hex	F12B81
RGB	241, 43, 129
RGB Percent	95%, 17%, 51%
CMY	0.0554, 0.8320, 0.4945
CMYK	0.00, 0.82, 0.46, 0.06
HSL	334°, 88%, 56%
HSV	334°, 82%, 94%
XYZ	41.0440, 21.9746, 22.8106
YIQ	112.0060, 90.4020, 68.7220

Conversions

Conversions Part 2

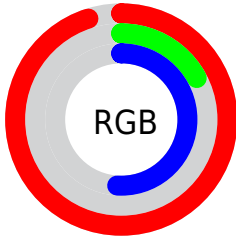
Format	Color
RYB	241, 43, 129
Decimal	15805313
CIELab	54.00, 76.20, 1.91
CIElCh	54, 76.226, 1.433
Yxy	21.9746, 0.4782, 0.2560
Android (android.graphics.Color)	4293995393 (0xFFFF12B81)
YUV	112.0060, 8.3780, 113.1277
Hunter-Lab	46.8770, 74.2540, 3.9631

Details

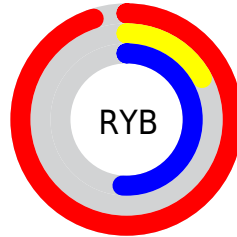
The CIELCh color **54, 76.226, 1.433** is a dark color, and the websafe version is hex **FF3399**. The color can be described as middle washed rose. A complement of this color would be **85, 71.395, 156.246**, and the grayscale version is **47, 0.006, 296.813**.

A 20% lighter version of the original color is **67, 62.714, 350.608**, and **38, 64.733, 6.986** is the 20% darker color. If you saturate the color by 10%, you get **52, 79.476, 5.504**, and if you desaturate by 10%, it is **57, 70.822, 358.221**.

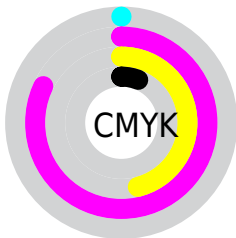
Distribution



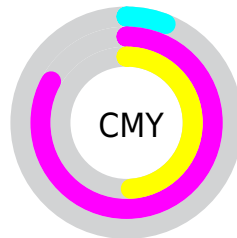
- Red (95%)
- Green (17%)
- Blue (51%)



- Red (95%)
- Yellow (17%)
- Blue (51%)



- Cyan (0%)
- Magenta (82%)
- Yellow (46%)
- Black (6%)



- Cyan (6%)
- Magenta (83%)
- Yellow (49%)

Brightness & Saturation Gradients

These gradients show how the CIELCh color 54, 76.226, 1.433 changes by changing the brightness by 10 percent. The first figure shows a shift by +10% for each color and the second figure -10%.

Similar to the brightness gradients but the following saturation gradients show a change of the CIELCh color 54, 76.226, 1.433 by changing the saturation by 10% instead.

 54, 76.226, 1.433  54, 76.226, 1.433

 100, 76.226, 1.433  44, 76.226, 1.433

 74, 76.226, 1.433  34, 76.226, 1.433

 84, 76.226, 1.433  24, 76.226, 1.433

 94, 76.226, 1.433  14, 76.226, 1.433

 4, 76.226, 1.433

 0, 76.226, 1.433

 54, 76.226, 1.433  54, 76.226, 1.433

 52, 79.476, 5.504  57, 70.822,
358.221

 51, 80.955, 9.227

60, 63.403,
355.691

65, 54.417,
353.671

70, 44.412,
352.021

75, 33.879,
350.639

81, 23.190,
349.451

87, 12.598,
348.402

94, 2.256, 347.307

99, 5.240, 179.138

Harmonies

Complementary

The Complementary color scheme is a pair of colors which are on the opposite of each other on the color wheel.



54, 76.226, 1.433



85, 71.395, 156.246

Rectangle

The Rectangle color scheme consists of four colors that form a rectangle on the color wheel.



54, 76.226, 1.433



54, 76.226, 51.433



54, 76.226, 181.433



54, 76.226, 231.433

Sweetspot

The Sweet Spot groups the original color and five complimentary colors.



54, 76.222, 1.434



84, 27.404, 349.775



45, 108.335, 313.840



42, 18.747, 350.190



0, 0.000, 0.000



53, 0.007, 296.813

Same Dimension

The Same Dimension uses a secret algorithm to generate beautiful new colors.



54, 76.222, 1.434



55, 84.343, 8.909



53, 85.906, 36.390



47, 5.814, 348.129



39, 65.995, 8.284



8, 28.976, 0.739

Inverse Universe

The Inverse Universe completely reimagines the original color for something new.



54, 76.222, 1.434



55, 84.343, 8.909



84, 43.619, 203.607



47, 5.814, 348.129



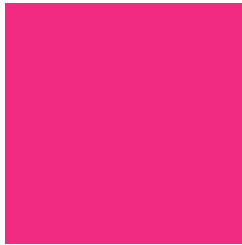
39, 65.995, 8.284



8, 28.976, 0.739

Previews

White Background



This preview shows how the CIELCh color 54, 76.226, 1.433 looks on a white background.

Color Contrast Check

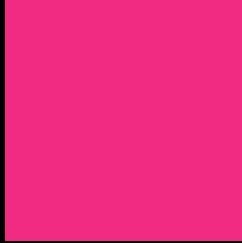
Large Text (above 18pt) WCAG AA ✓ Pass

Any Text WCAG AA ✗ Fail

Large Text (above 18pt) WCAG AAA ✗ Fail

Any Text WCAG AAA ✗ Fail

Black Background



This preview shows how the CIELCh color 54, 76.226, 1.433 looks on a black background.

Color Contrast Check

Large Text (above 18pt) WCAG AA ✓ Pass

Any Text WCAG AA ✓ Pass

Large Text (above 18pt) WCAG AAA ✓ Pass

Any Text WCAG AAA × Fail

If you want to check with other color combinations, try the [Color Contrast Checker](#).

CIELCh 54, 76.226, 1.433

Background



This preview shows how black text looks on a background with the CIELCh color 54, 76.226, 1.433.

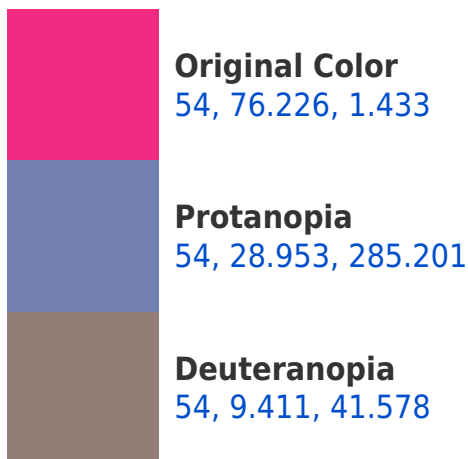


This preview shows how white text looks on a background with the CIELCh color 54, 76.226, 1.433.

Color Blindness Simulation

Color vision deficiency is a very complex topic, and I could not describe the different causes any better than Wikipedia does, so if you want to learn more, you should check out their [article about color blindness](#).

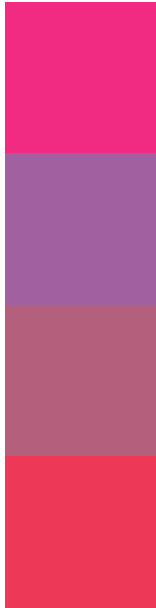
Dichromacy





Tritanopia
54, 76.655, 31.070

Trichromacy



Original Color
54, 76.226, 1.433

Protanomaly
50, 42.904, 326.965

Deuteranomaly
51, 37.562, 359.895

Tritanomaly
54, 73.938, 20.544

Monochromacy



Original Color
54, 76.226, 1.433

Achromatopsia
47, 0.006, 296.813

Achromatomaly
46, 33.886, 352.560

CSS Examples

Text

The CSS property to change the color of the text to CIELCh 54, 76.226, 1.433 is called "color". The color property can be set on classes, ids or directly on the HTML element.

This example shows how text in the color `rgb(241, 43, 129)` looks like.

```
.text, #text, p{  
    color:rgb(241, 43, 129)  
}
```

If you want to add a text shadow in that color use the text-shadow property, you can generate a text shadow directly with our [CSS Text Shadow Generator](#).

Here you see how black text with a 4 pixel rgb(241, 43, 129) colored shadow looks like.

```
.shadow{ text-shadow: 4px 4px 2px rgb(241, 43, 129) }
```

Border

The CSS property to change the border of an element to CIELCh 54, 76.226, 1.433 is called "border". The border property can be set on classes, ids or directly on the HTML element.

This example shows the color as border, it can be applied via the CSS property "border" or "border-color".

```
.border, #border, table{ border:4px solid rgb(241, 43, 129) }
```

If only the border color should be changed use the property `border-color`.

```
.border{ border-color:rgb(241, 43, 129) }
```

If you want to add a box shadow in that color use:

Here you see how a box with a 4 pixel `rgb(241, 43, 129)` colored shadow looks like.

```
.boxshadow{ -moz-box-shadow:4px 4px 4px  
4px rgb(241, 43, 129); -webkit-box-  
shadow:4px 4px 4px 4px rgb(241, 43, 129);  
box-shadow:4px 4px 4px 4px rgb(241, 43,  
129) }
```

Background

The CSS property to change the background color of an element to CIELCh 54, 76.226, 1.433 is called "background". The background property can be set on classes, ids or directly on the HTML element.

```
.background, #background, body{  
background: rgb(241, 43, 129) }
```

If only the background color should be changed can be used:

```
.background{ background-color: rgb(241, 43,  
129) }
```

This example shows the color as background, it is applied via the CSS property "background".

To optimize and compress your CSS code, you can use our [online CSS compressor and optimizer](#) based on csstidy. If you want to create a linear or radial gradient as background or border, check our [CSS Gradient Generator](#).

Hey! You found this booklet interesting? Support Converting Colors with the new Membership Option!

The pro membership hides all ads, plus gives you double the colors in the color bucket, and more awesome pro features!

[Learn more, Memberships starting at \\$2.50/m!](#)

**Follow me
on Twitter!**

@ConvertingColor