

# Converting Colors

CIELCh(54, 76.441, 6.904)

Have a look what the booklet for  
CIELCh(54, 76.441, 6.904) contains.

<b>CIELCh(54, 76.524, 6.855)</b> .....	3
<i><b>Conversions</b></i> .....	4
<i><b>Details</b></i> .....	6
<i><b>Harmonies</b></i> .....	11
<i><b>Previews</b></i> .....	20
<i><b>Color Blindness Simulation</b></i> .....	23
<i><b>CSS Examples</b></i> .....	26

**Color**

**CIELCh(54, 76.524, 6.855)**

# Conversions

## Conversions Part 1

Format	Color
Hex	F32A75
RGB	243, 42, 117
RGB Percent	95%, 16%, 46%
CMY	0.0473, 0.8356, 0.5414
CMYK	0.00, 0.83, 0.52, 0.05
HSL	338°, 89%, 56%
HSV	338°, 83%, 95%
XYZ	40.9707, 21.9746, 18.8951
YIQ	110.6490, 95.7210, 65.9370

# Conversions

## Conversions Part 2

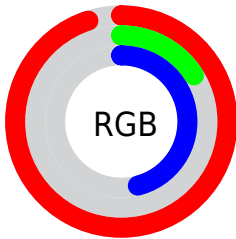
<b>Format</b>	<b>Color</b>
<b>R<sub>YB</sub></b>	243, 42, 117
Decimal	15936117
CIE <sub>Lab</sub>	54.00, 75.98, 9.13
CIE <sub>LCh</sub>	54, 76.524, 6.855
Yxy	21.9746, 0.5006, 0.2685
Android (android.graphics.Color)	4294126197 (0xFFFF32A75)
YUV	110.6490, 3.1310, 116.0718
Hunter-Lab	46.8770, 73.9748, 8.9155

# Details

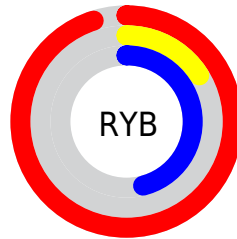
The CIELCh color **54, 76.524, 6.855** is a dark color, and the websafe version is hex **FF0066**. The color can be described as middle washed rose. A complement of this color would be **86, 67.623, 159.909**, and the grayscale version is **47, 0.006, 296.813**.

A 20% lighter version of the original color is **66, 60.420, 356.731**, and **38, 65.501, 13.172** is the 20% darker color. If you saturate the color by 10%, you get **52, 80.415, 11.459**, and if you desaturate by 10%, it is **57, 70.734, 3.188**.

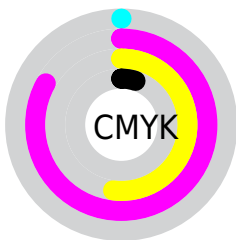
# Distribution



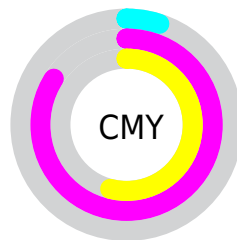
- Red (95%)
- Green (16%)
- Blue (46%)



- Red (95%)
- Yellow (16%)
- Blue (46%)



- Cyan (0%)
- Magenta (83%)
- Yellow (52%)
- Black (5%)



- Cyan (5%)
- Magenta (84%)
- Yellow (54%)

# Brightness & Saturation Gradients

These gradients show how the CIELCh color 54, 76.524, 6.855 changes by changing the brightness by 10 percent. The first figure shows a shift by +10% for each color and the second figure -10%.

Similar to the brightness gradients but the following saturation gradients show a change of the CIELCh color 54, 76.524, 6.855 by changing the saturation by 10% instead.



 54, 76.524, 6.855       54, 76.524, 6.855

 100, 76.524, 6.855       44, 76.524, 6.855

 74, 76.524, 6.855       34, 76.524, 6.855

 84, 76.524, 6.855       24, 76.524, 6.855

 94, 76.524, 6.855       14, 76.524, 6.855

 4, 76.524, 6.855

 0, 76.524, 6.855

 54, 76.524, 6.855       54, 76.524, 6.855

 52, 80.415, 11.459       57, 70.734, 3.188

 52, 82.483, 15.287       60, 63.108, 0.305

65, 54.046,  
358.023

70, 44.067,  
356.183

76, 33.642,  
354.665

82, 23.130,  
353.379

88, 12.770,  
352.260

94, 2.706, 351.143

99, 4.212, 192.207

# Harmonies

# Complementary

The Complementary color scheme is a pair of colors which are on the opposite of each other on the color wheel.



54, 76.524, 6.855



86, 67.623, 159.909

# Rectangle

The Rectangle color scheme consists of four colors that form a rectangle on the color wheel.



54, 76.524, 6.855



54, 76.524, 56.855



54, 76.524, 186.855



54, 76.524, 236.855

# Sweetspot

The Sweet Spot groups the original color and five complimentary colors.



54, 76.520, 6.857



84, 26.520, 353.661



47, 108.636, 315.660



42, 18.162, 354.106



0, 0.000, 0.000



53, 0.007, 296.813



# Same Dimension

The Same Dimension uses a secret algorithm to generate beautiful new colors.



54, 76.520, 6.857



54, 85.306, 14.914



55, 84.660, 38.885



48, 5.700, 351.919



39, 67.349, 14.287



9, 29.622, 6.090





# Inverse Universe

The Inverse Universe completely reimagines the original color for something new.



54, 76.520, 6.857



54, 85.306, 14.914



81, 41.437, 214.624



48, 5.700, 351.919



39, 67.349, 14.287



9, 29.622, 6.090



# Previews

## White Background



This preview shows how the CIELCh color 54, 76.524, 6.855 looks on a white background.

## Color Contrast Check

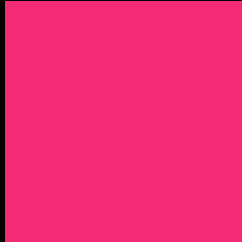
Large Text (above 18pt) WCAG AA ✓ Pass

Any Text WCAG AA ✗ Fail

Large Text (above 18pt) WCAG AAA ✗ Fail

Any Text WCAG AAA ✗ Fail

# Black Background



This preview shows how the CIELCh color 54, 76.524, 6.855 looks on a black background.

## Color Contrast Check

Large Text (above 18pt) WCAG AA ✓ Pass

Any Text WCAG AA ✓ Pass

Large Text (above 18pt) WCAG AAA ✓ Pass

Any Text WCAG AAA × Fail

If you want to check with other color combinations, try the [Color Contrast Checker](#).

**CIELCh 54, 76.524, 6.855**

## **Background**



This preview shows how black text looks on a background with the CIELCh color 54, 76.524, 6.855.

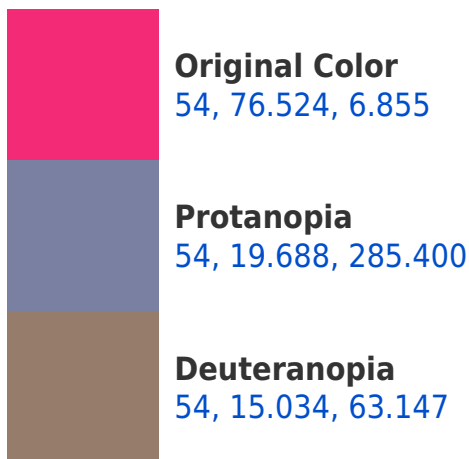


This preview shows how white text looks on a background with the CIELCh color 54, 76.524, 6.855.

# Color Blindness Simulation

Color vision deficiency is a very complex topic, and I could not describe the different causes any better than Wikipedia does, so if you want to learn more, you should check out their [article about color blindness](#).

## Dichromacy

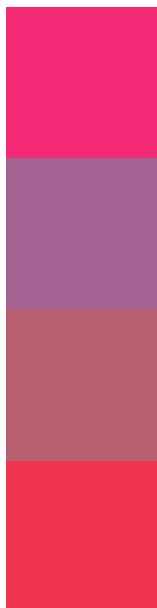




**Tritanopia**  
54, 79.880, 32.179



# Trichromacy



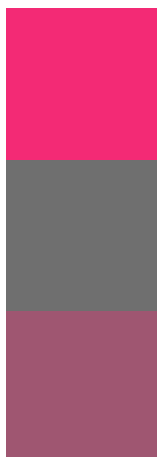
**Original Color**  
54, 76.524, 6.855

**Protanomaly**  
50, 37.902, 336.423

**Deuteranomaly**  
51, 38.264, 11.293

**Tritanomaly**  
54, 76.806, 23.301

# Monochromacy



**Original Color**  
54, 76.524, 6.855

**Achromatopsia**  
47, 0.006, 296.813

**Achromatomaly**  
46, 33.476, 356.735

# CSS Examples

## Text

The CSS property to change the color of the text to CIELCh 54, 76.524, 6.855 is called "color". The color property can be set on classes, ids or directly on the HTML element.

This example shows how text in the color `rgb(243, 42, 117)` looks like.

```
.text, #text, p{  
    color:rgb(243, 42, 117)  
}
```

If you want to add a text shadow in that color use the text-shadow property, you can generate a text shadow directly with our [CSS Text Shadow Generator](#).

Here you see how black text with a 4 pixel rgb(243, 42, 117) colored shadow looks like.

```
.shadow{ text-shadow: 4px 4px 2px rgb(243, 42, 117) }
```

## Border

The CSS property to change the border of an element to CIELCh 54, 76.524, 6.855 is called "border". The border property can be set on classes, ids or directly on the HTML element.

This example shows the color as border, it can be applied via the CSS property "border" or "border-color".

```
.border, #border, table{ border:4px solid rgb(243, 42, 117) }
```

If only the border color should be changed use the property border-color.

```
.border{ border-color:rgb(243, 42, 117) }
```

If you want to add a box shadow in that color use:

Here you see how a box with a 4 pixel rgb(243, 42, 117) colored shadow looks like.

```
.boxshadow{ -moz-box-shadow:4px 4px 4px  
4px rgb(243, 42, 117); -webkit-box-  
shadow:4px 4px 4px 4px rgb(243, 42, 117);  
box-shadow:4px 4px 4px 4px rgb(243, 42,  
117) }
```

# Background

The CSS property to change the background color of an element to CIELCh 54, 76.524, 6.855 is called "background". The background property can be set on classes, ids or directly on the HTML element.

```
.background, #background, body{  
background: rgb(243, 42, 117) }
```

If only the background color should be changed can be used:

```
.background{ background-color: rgb(243, 42,  
117) }
```

This example shows the color as background, it is applied via the CSS property "background".

To optimize and compress your CSS code, you can use our [online CSS compressor and optimizer](#) based on csstidy. If you want to create a linear or radial gradient as background or border, check our [CSS Gradient Generator](#).

Hey! You found this booklet interesting? Support Converting Colors with the new Membership Option!

The pro membership hides all ads, plus gives you double the colors in the color bucket, and more awesome pro features!

**[Learn more, Memberships starting at \\$2.50/m!](#)**

**Follow me  
on Twitter!**

**@ConvertingColor**