

Converting Colors

CIELCh(54, 80.208, 7.887)

Have a look what the booklet for
CIELCh(54, 80.208, 7.887) contains.

CIELCh(54, 80.253, 7.941)	3
<i>Conversions</i>	4
<i>Details</i>	6
<i>Harmonies</i>	11
<i>Previews</i>	20
<i>Color Blindness Simulation</i>	23
<i>CSS Examples</i>	26

Color

CIELCh(54, 80.253, 7.941)

Conversions

Conversions Part 1

Format	Color
Hex	F81C72
RGB	248, 28, 114
RGB Percent	97%, 11%, 45%
CMY	0.0278, 0.8908, 0.5532
CMYK	0.00, 0.89, 0.54, 0.03
HSL	337°, 94%, 54%
HSV	337°, 89%, 97%
XYZ	42.1224, 21.9746, 17.9197
YIQ	103.5840, 103.5140, 73.3860

Conversions

Conversions Part 2

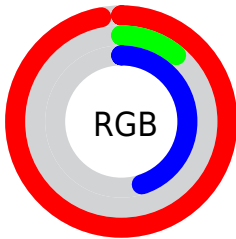
Format	Color
RYB	248, 28, 114
Decimal	16260210
CIELab	54.00, 79.48, 11.09
CIELCh	54, 80.253, 7.941
Yxy	21.9746, 0.5136, 0.2679
Android (android.graphics.Color)	4294450290 (0xFFFF81C72)
YUV	103.5840, 5.1351, 126.6528
Hunter-Lab	46.8770, 78.3603, 10.1491

Details

The CIELCh color **54, 80.253, 7.941** is a dark color, and the websafe version is hex **FF0066**. The color can be described as dark washed rose. A complement of this color would be **87, 73.074, 157.441**, and the grayscale version is **44, 0.006, 296.813**.

A 20% lighter version of the original color is **65, 62.572, 357.442**, and **39, 66.929, 15.111** is the 20% darker color. If you saturate the color by 10%, you get **53, 83.031, 12.962**, and if you desaturate by 10%, it is **56, 75.774, 3.834**.

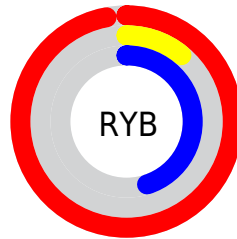
Distribution



Red (97%)

Green (11%)

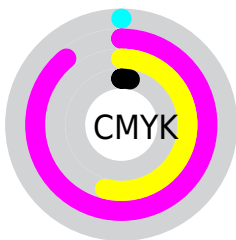
Blue (45%)



Red (97%)

Yellow (11%)

Blue (45%)

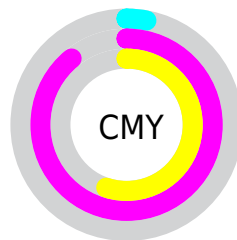


Cyan (0%)

Magenta (89%)

Yellow (54%)

Black (3%)



Cyan (3%)

Magenta (89%)

Yellow (55%)


Brightness & Saturation Gradients


These gradients show how the CIELCh color 54, 80.253, 7.941 changes by changing the brightness by 10 percent. The first figure shows a shift by +10% for each color and the second figure -10%.

Similar to the brightness gradients but the following saturation gradients show a change of the CIELCh color 54, 80.253, 7.941 by changing the saturation by 10% instead.

 54, 80.253, 7.941  54, 80.253, 7.941

 100, 80.253, 7.941  44, 80.253, 7.941

 74, 80.253, 7.941  34, 80.253, 7.941

 84, 80.253, 7.941  24, 80.253, 7.941

 94, 80.253, 7.941  14, 80.253, 7.941

 4, 80.253, 7.941

 0, 80.253, 7.941

 54, 80.253, 7.941  54, 80.253, 7.941

 53, 83.031, 12.962  56, 75.774, 3.834

 53, 83.362, 13.601  59, 69.261, 0.595

63, 60.947,
358.045

68, 51.327,
356.010

74, 40.932,
354.350

79, 30.211,
352.961

86, 19.486,
351.769

92, 8.966, 350.708

98, 1.231, 170.282

Harmonies

Complementary

The Complementary color scheme is a pair of colors which are on the opposite of each other on the color wheel.



54, 80.253, 7.941



87, 73.074, 157.441

Rectangle

The Rectangle color scheme consists of four colors that form a rectangle on the color wheel.



54, 80.253, 7.941



54, 80.253, 57.941



54, 80.253, 187.941



54, 80.253, 237.941

Sweetspot

The Sweet Spot groups the original color and five complimentary colors.



54, 80.249, 7.943



83, 28.965, 352.743



46, 114.859, 314.962



42, 19.576, 353.180



0, 0.000, 0.000



53, 0.007, 296.813

Same Dimension

The Same Dimension uses a secret algorithm to generate beautiful new colors.



54, 80.249, 7.943



54, 85.182, 13.691



54, 92.784, 39.503



49, 5.858, 350.784



40, 67.755, 12.612



10, 30.471, 5.154

Inverse Universe

The Inverse Universe completely reimagines the original color for something new.



54, 80.249, 7.943



54, 85.182, 13.691



83, 43.225, 212.621



49, 5.858, 350.784



40, 67.755, 12.612



10, 30.471, 5.154

Previews

White Background



This preview shows how the CIELCh color 54, 80.253, 7.941 looks on a white background.

Color Contrast Check

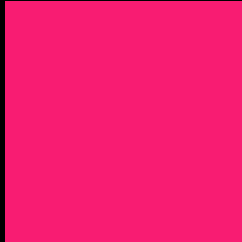
Large Text (above 18pt) WCAG AA ✓ Pass

Any Text WCAG AA ✗ Fail

Large Text (above 18pt) WCAG AAA ✗ Fail

Any Text WCAG AAA ✗ Fail

Black Background



This preview shows how the CIELCh color 54, 80.253, 7.941 looks on a black background.

Color Contrast Check

Large Text (above 18pt) WCAG AA ✓ Pass

Any Text WCAG AA ✓ Pass

Large Text (above 18pt) WCAG AAA ✓ Pass

Any Text WCAG AAA × Fail

If you want to check with other color combinations, try the [Color Contrast Checker](#).

CIELCh 54, 80.253, 7.941

Background



This preview shows how black text looks on a background with the CIELCh color 54, 80.253, 7.941.



This preview shows how white text looks on a background with the CIELCh color 54, 80.253, 7.941.

Color Blindness Simulation

Color vision deficiency is a very complex topic, and I could not describe the different causes any better than Wikipedia does, so if you want to learn more, you should check out their [article about color blindness](#).

Dichromacy



Original Color

54, 80.253, 7.941

Protanopia

54, 19.657, 286.397

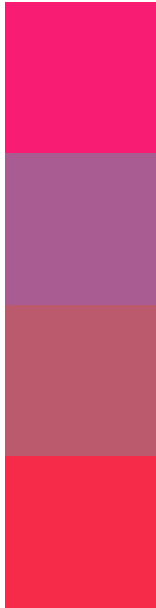
Deuteranopia

54, 16.649, 65.984



Tritanopia
54, 85.554, 33.911

Trichromacy



Original Color
54, 80.253, 7.941

Protanomaly
50, 41.359, 337.804

Deuteranomaly
50, 41.318, 11.428

Tritanomaly
54, 81.748, 25.092

Monochromacy



Original Color
54, 80.253, 7.941

Achromatopsia
44, 0.006, 296.813

Achromatomaly
43, 36.948, 356.440

CSS Examples

Text

The CSS property to change the color of the text to CIELCh 54, 80.253, 7.941 is called "color". The color property can be set on classes, ids or directly on the HTML element.

This example shows how text in the color `rgb(248, 28, 114)` looks like.

```
.text, #text, p{  
    color:rgb(248, 28, 114)  
}
```

If you want to add a text shadow in that color use the text-shadow property, you can generate a text shadow directly with our [CSS Text Shadow Generator](#).

Here you see how black text with a 4 pixel rgb(248, 28, 114) colored shadow looks like.

```
.shadow{ text-shadow: 4px 4px 2px rgb(248, 28, 114) }
```

Border

The CSS property to change the border of an element to CIELCh 54, 80.253, 7.941 is called "border". The border property can be set on classes, ids or directly on the HTML element.

This example shows the color as border, it can be applied via the CSS property "border" or "border-color".

```
.border, #border, table{ border:4px solid rgb(248, 28, 114) }
```

If only the border color should be changed use the property `border-color`.

```
.border{ border-color:rgb(248, 28, 114) }
```

If you want to add a box shadow in that color use:

Here you see how a box with a 4 pixel `rgb(248, 28, 114)` colored shadow looks like.

```
.boxshadow{ -moz-box-shadow:4px 4px 4px  
4px rgb(248, 28, 114); -webkit-box-  
shadow:4px 4px 4px 4px rgb(248, 28, 114);  
box-shadow:4px 4px 4px 4px rgb(248, 28,  
114) }
```

Background

The CSS property to change the background color of an element to CIELCh 54, 80.253, 7.941 is called "background". The background property can be set on classes, ids or directly on the HTML element.

```
.background, #background, body{  
background: rgb(248, 28, 114) }
```

If only the background color should be changed can be used:

```
.background{ background-color: rgb(248, 28,  
114) }
```

This example shows the color as background, it is applied via the CSS property "background".

To optimize and compress your CSS code, you can use our [online CSS compressor and optimizer](#) based on csstidy. If you want to create a linear or radial gradient as background or border, check our [CSS Gradient Generator](#).

Hey! You found this booklet interesting? Support Converting Colors with the new Membership Option!

The pro membership hides all ads, plus gives you double the colors in the color bucket, and more awesome pro features!

[Learn more, Memberships starting at \\$2.50/m!](#)

**Follow me
on Twitter!**

@ConvertingColor