

Converting Colors

CIELCh(54, 85.761, 15.982)

Have a look what the booklet for
CIELCh(54, 85.761, 15.982) contains.

CIELCh(54, 85.736, 15.893)	3
<i>Conversions</i>	4
<i>Details</i>	6
<i>Harmonies</i>	11
<i>Previews</i>	20
<i>Color Blindness Simulation</i>	23
<i>CSS Examples</i>	26

Color

CIELCh(54, 85.736, 15.893)

Conversions

Conversions Part 1

Format	Color
Hex	FF005E
RGB	255, 0, 94
RGB Percent	100%, 0%, 37%
CMY	0.0013, 1.0000, 0.6323
CMYK	0.00, 1.00, 0.63, 0.00
HSL	338°, 100%, 50%
HSV	338°, 100%, 100%
XYZ	43.1164, 21.9746, 12.5033
YIQ	86.9610, 121.8060, 83.2940

Conversions

Conversions Part 2

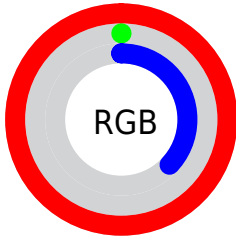
Format	Color
RYB	255, 0, 94
Decimal	16711774
CIELab	54.00, 82.46, 23.48
CIElCh	54, 85.736, 15.893
Yxy	21.9746, 0.5557, 0.2832
Android (android.graphics.Color)	4294901854 (0xFFFF005E)
YUV	86.9610, 3.4702, 147.3702
Hunter-Lab	46.8770, 82.1453, 16.9998

Details

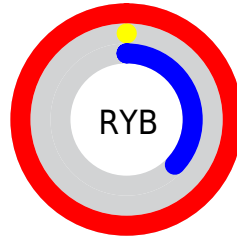
The CIELCh color **54, 85.736, 15.893** is a dark color, and the websafe version is hex **FF0066**. The color can be described as dark saturated red. A complement of this color would be **89, 77.423, 156.365**, and the grayscale version is **37, 0.005, 296.813**.

A 20% lighter version of the original color is **63, 63.686, 6.149**, and **40, 71.923, 24.929** is the 20% darker color. If you saturate the color by 10%, you get **54, 85.664, 15.933**, and if you desaturate by 10%, it is **55, 82.541, 10.671**.

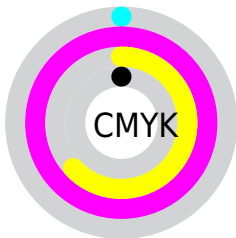
Distribution



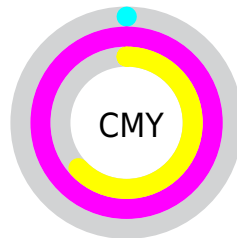
- Red (100%)
- Green (0%)
- Blue (37%)



- Red (100%)
- Yellow (0%)
- Blue (37%)



- Cyan (0%)
- Magenta (100%)
- Yellow (63%)
- Black (0%)



- Cyan (0%)
- Magenta (100%)
- Yellow (63%)


Brightness & Saturation Gradients

These gradients show how the CIELCh color 54, 85.736, 15.893 changes by changing the brightness by 10 percent. The first figure shows a shift by +10% for each color and the second figure -10%.

Similar to the brightness gradients but the following saturation gradients show a change of the CIELCh color 54, 85.736, 15.893 by changing the saturation by 10% instead.

 54, 85.736, 15.893

 54, 85.736, 15.893

 100, 85.736,
15.893

 44, 85.736, 15.893

 74, 85.736, 15.893

 34, 85.736, 15.893

 84, 85.736, 15.893

 24, 85.736, 15.893

 94, 85.736, 15.893

 14, 85.736, 15.893

 4, 85.736, 15.893

 0, 85.736, 15.893

 54, 85.736, 15.893

 54, 85.736, 15.893

 54, 85.664, 15.933

 55, 82.541, 10.671

 57, 77.956, 6.267

60, 71.389, 2.778

64, 63.009, 0.037

69, 53.285,
357.862

75, 42.754,
356.100

81, 31.881,
354.638

87, 21.001,
353.394

93, 10.335,
352.300

Harmonies

Complementary

The Complementary color scheme is a pair of colors which are on the opposite of each other on the color wheel.



54, 85.736, 15.893



89, 77.423, 156.365

Rectangle

The Rectangle color scheme consists of four colors that form a rectangle on the color wheel.



54, 85.736, 15.893



54, 85.736, 65.893



54, 85.736, 195.893



54, 85.736, 245.893

Sweetspot

The Sweet Spot groups the original color and five complimentary colors.



54, 85.664, 15.933



81, 31.914, 354.638



45, 121.797, 314.660



40, 21.846, 355.224



0, 0.000, 0.000



53, 0.007, 296.813

Same Dimension

The Same Dimension uses a secret algorithm to generate beautiful new colors.



54, 85.664, 15.933



54, 85.748, 15.938



54, 102.553, 41.166



50, 5.877, 352.249



41, 68.836, 14.887



10, 31.286, 7.502

Inverse Universe

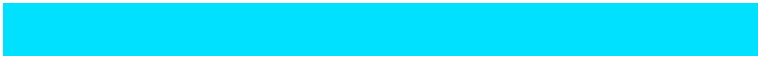
The Inverse Universe completely reimagines the original color for something new.



54, 85.664, 15.933



54, 85.748, 15.938



82, 44.039, 218.074



50, 5.877, 352.249



41, 68.836, 14.887



10, 31.286, 7.502

Previews

White Background



This preview shows how the CIELCh color 54, 85.736, 15.893 looks on a white background.

Color Contrast Check

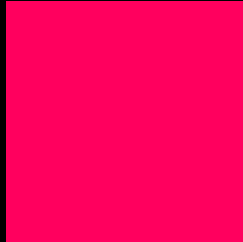
Large Text (above 18pt) WCAG AA ✓ Pass

Any Text WCAG AA × Fail

Large Text (above 18pt) WCAG AAA × Fail

Any Text WCAG AAA × Fail

Black Background



This preview shows how the CIELCh color 54, 85.736, 15.893 looks on a black background.

Color Contrast Check

Large Text (above 18pt) WCAG AA ✓ Pass

Any Text WCAG AA ✓ Pass

Large Text (above 18pt) WCAG AAA ✓ Pass

Any Text WCAG AAA × Fail

If you want to check with other color combinations, try the [Color Contrast Checker](#).

CIELCh 54, 85.736, 15.893

Background



This preview shows how black text looks on a background with the CIELCh color 54, 85.736, 15.893.

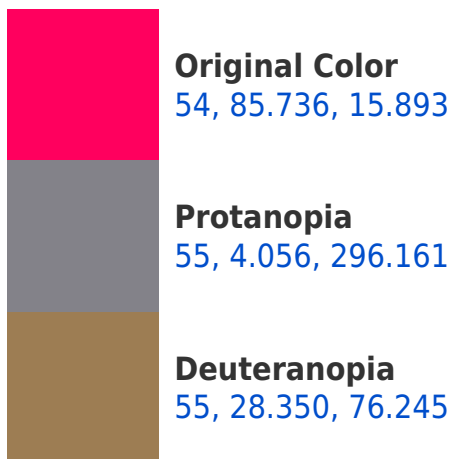


This preview shows how white text looks on a background with the CIELCh color 54, 85.736, 15.893.

Color Blindness Simulation

Color vision deficiency is a very complex topic, and I could not describe the different causes any better than Wikipedia does, so if you want to learn more, you should check out their [article about color blindness](#).

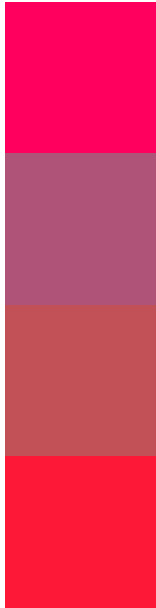
Dichromacy





Tritanopia
54, 94.740, 36.961

Trichromacy



Original Color
54, 85.736, 15.893

Protanomaly
48, 42.250, 355.357

Deuteranomaly
49, 49.745, 22.645

Tritanomaly
54, 90.942, 30.083

Monochromacy



Original Color
54, 85.736, 15.893

Achromatopsia
37, 0.005, 296.813

Achromatomaly
37, 42.352, 0.366

CSS Examples

Text

The CSS property to change the color of the text to CIELCh 54, 85.736, 15.893 is called "color". The color property can be set on classes, ids or directly on the HTML element.

This example shows how text in the color `rgb(255, 0, 94)` looks like.

```
.text, #text, p{  
    color:rgb(255, 0, 94)  
}
```

If you want to add a text shadow in that color use the text-shadow property, you can generate a text shadow directly with our [CSS Text Shadow Generator](#).

Here you see how black text with a 4 pixel rgb(255, 0, 94) colored shadow looks like.

```
.shadow{ text-shadow: 4px 4px 2px rgb(255, 0, 94) }
```

Border

The CSS property to change the border of an element to CIELCh 54, 85.736, 15.893 is called "border". The border property can be set on classes, ids or directly on the HTML element.

This example shows the color as border, it can be applied via the CSS property "border" or "border-color".

```
.border, #border, table{ border:4px solid rgb(255, 0, 94) }
```

If only the border color should be changed use the property border-color.

```
.border{ border-color:rgb(255, 0, 94) }
```

If you want to add a box shadow in that color use:

Here you see how a box with a 4 pixel rgb(255, 0, 94) colored shadow looks like.

```
.boxshadow{ -moz-box-shadow:4px 4px 4px  
4px rgb(255, 0, 94); -webkit-box-  
shadow:4px 4px 4px 4px rgb(255, 0, 94);  
box-shadow:4px 4px 4px 4px rgb(255, 0, 94)  
}
```

Background

The CSS property to change the background color of an element to CIELCh 54, 85.736, 15.893 is called "background". The background property can be set on classes, ids or directly on the HTML element.

```
.background, #background, body{  
background: rgb(255, 0, 94) }
```

If only the background color should be changed can be used:

```
.background{ background-color: rgb(255, 0,  
94) }
```

This example shows the color as background, it is applied via the CSS property "background".

To optimize and compress your CSS code, you can use our [online CSS compressor and optimizer](#) based on csstidy. If you want to create a linear or radial gradient as background or border, check our [CSS Gradient Generator](#).

Hey! You found this booklet interesting? Support Converting Colors with the new Membership Option!

The pro membership hides all ads, plus gives you double the colors in the color bucket, and more awesome pro features!

[Learn more, Memberships starting at \\$2.50/m!](#)

**Follow me
on Twitter!**

@ConvertingColor