

Converting Colors

CIELCh(55, 15.961, 60.064)

Have a look what the booklet for
CIELCh(55, 15.961, 60.064) contains.

CIELCh(55, 16.003, 59.985)	3
<i>Conversions</i>	4
<i>Details</i>	6
<i>Harmonies</i>	11
<i>Previews</i>	20
<i>Color Blindness Simulation</i>	23
<i>CSS Examples</i>	26

Color

CIELCh(55, 16.003, 59.985)

Conversions

Conversions Part 1

Format	Color
Hex	9A7E6C
RGB	154, 126, 108
RGB Percent	60%, 49%, 42%
CMY	0.3955, 0.5053, 0.5759
CMYK	0.00, 0.18, 0.30, 0.40
HSL	23°, 19%, 51%
HSV	23°, 30%, 60%
XYZ	23.5495, 22.9298, 17.4117
YIQ	132.3200, 22.4660, 0.3380

Conversions

Conversions Part 2

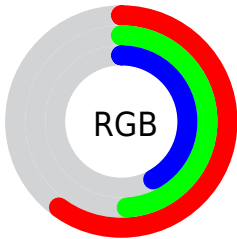
Format	Color
RYB	154, 138, 108
Decimal	10124908
CIELab	55.00, 8.01, 13.86
CIElCh	55, 16.003, 59.985
Yxy	22.9298, 0.3686, 0.3589
Android (android.graphics.Color)	4288314988 (0xFF9A7E6C)
YUV	132.3200, -11.9898, 19.0134
Hunter-Lab	47.8851, 3.9859, 11.9609

Details

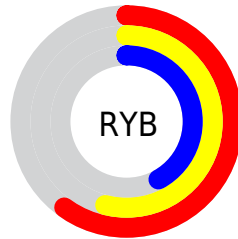
The CIELCh color **55, 16.003, 59.985** is a dark color, and the websafe version is hex **996666**. A complement of this color would be **55, 13.971, 246.776**, and the grayscale version is **55, 0.007, 296.813**.

A 20% lighter version of the original color is **75, 16.173, 61.464**, and **35, 15.800, 59.103** is the 20% darker color. If you saturate the color by 10%, you get **52, 22.071, 59.111**, and if you desaturate by 10%, it is **58, 10.304, 60.907**.

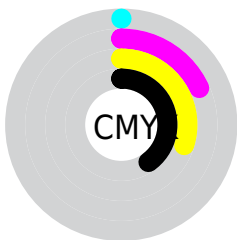
Distribution



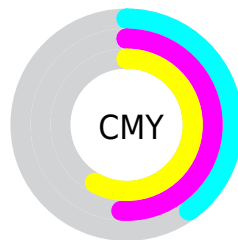
- Red (60%)
- Green (49%)
- Blue (42%)



- Red (60%)
- Yellow (54%)
- Blue (42%)



- Cyan (0%)
- Magenta (18%)
- Yellow (30%)
- Black (40%)



- Cyan (40%)
- Magenta (51%)
- Yellow (58%)

Brightness & Saturation Gradients

These gradients show how the CIELCh color 55, 16.003, 59.985 changes by changing the brightness by 10 percent. The first figure shows a shift by +10% for each color and the second figure -10%.

Similar to the brightness gradients but the following saturation gradients show a change of the CIELCh color 55, 16.003, 59.985 by changing the saturation by 10% instead.

■ 55, 16.003, 59.985

■ 55, 16.003, 59.985

■ 100, 16.003,
59.985

■ 45, 16.003, 59.985

■ 75, 16.003, 59.985

■ 35, 16.003, 59.985

■ 85, 16.003, 59.985

■ 25, 16.003, 59.985

■ 95, 16.003, 59.985

■ 15, 16.003, 59.985

■ 5, 16.003, 59.985

■ 0, 16.003, 59.985

■ 55, 16.003, 59.985

■ 55, 16.003, 59.985

■ 52, 22.071, 59.111

■ 58, 10.304, 60.907

■ 50, 28.514, 58.273

■ 61, 4.954, 61.822

■ 47, 35.298, 57.475

■ 64, 0.080, 247.527

■ 44, 42.315, 56.682

■ 67, 4.827, 243.912

■ 42, 49.305, 55.792

■ 70, 9.322, 244.837

■ 40, 55.726, 54.568

■ 73, 13.594,
245.772

■ 38, 61.376, 53.133

■ 76, 17.669,
246.691

■ 38, 61.471, 53.122

■ 79, 21.572,
247.587

■ 82, 25.324,
248.454

Harmonies

Complementary

The Complementary color scheme is a pair of colors which are on the opposite of each other on the color wheel.



55, 16.003, 59.985



55, 13.971, 246.776

Rectangle

The Rectangle color scheme consists of four colors that form a rectangle on the color wheel.



55, 16.003, 59.985



55, 16.003, 109.985



55, 16.003, 239.985



55, 16.003, 289.985

Sweetspot

The Sweet Spot groups the original color and five complimentary colors.



55, 16.003, 59.993



78, 5.619, 61.881



51, 24.372, 340.200



41, 3.952, 61.760



91, 0.011, 296.813



43, 0.006, 296.813

Same Dimension

The Same Dimension uses a secret algorithm to generate beautiful new colors.



55, 16.003, 59.993



68, 24.547, 59.383



61, 22.715, 101.835



31, 2.820, 61.877



35, 57.218, 53.450



2, 2.970, 62.042

Inverse Universe

The Inverse Universe completely reimagines the original color for something new.



55, 13.971, 246.776



69, 20.669, 248.041



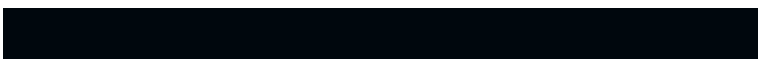
49, 23.922, 288.838



31, 2.719, 243.904



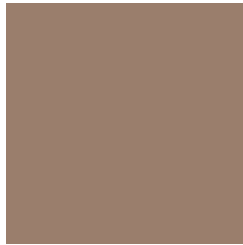
35, 36.484, 269.899



2, 2.987, 244.095

Previews

White Background



This preview shows how the CIELCh color 55, 16.003, 59.985 looks on a white background.

Color Contrast Check

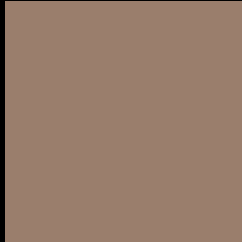
Large Text (above 18pt) WCAG AA ✓ Pass

Any Text WCAG AA × Fail

Large Text (above 18pt) WCAG AAA × Fail

Any Text WCAG AAA × Fail

Black Background



This preview shows how the CIE LCh color 55, 16.003, 59.985 looks on a black background.

Color Contrast Check

Large Text (above 18pt) WCAG AA ✓ Pass

Any Text WCAG AA ✓ Pass

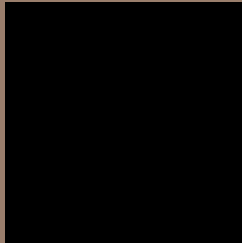
Large Text (above 18pt) WCAG AAA ✓ Pass

Any Text WCAG AAA × Fail

If you want to check with other color combinations, try the [Color Contrast Checker](#).

CIELCh 55, 16.003, 59.985

Background



This preview shows how black text looks on a background with the CIELCh color 55, 16.003, 59.985.



This preview shows how white text looks on a background with the CIELCh color 55, 16.003, 59.985.

Color Blindness Simulation

Color vision deficiency is a very complex topic, and I could not describe the different causes any better than Wikipedia does, so if you want to learn more, you should check out their [article about color blindness](#).

Dichromacy



Original Color

55, 16.003, 59.985

Protanopia

55, 12.341, 94.885

Deuteranopia

55, 15.726, 63.467



Tritanopia
55, 14.664, 0.635

Trichromacy



Original Color
55, 16.003, 59.985

Protanomaly
55, 13.124, 79.695

Deuteranomaly
55, 15.726, 63.467

Tritanomaly
55, 13.301, 23.274

Monochromacy



Original Color
55, 16.003, 59.985

Achromatopsia
55, 0.007, 296.813

Achromatomaly
55, 5.716, 64.022

CSS Examples

Text

The CSS property to change the color of the text to CIELCh 55, 16.003, 59.985 is called "color". The color property can be set on classes, ids or directly on the HTML element.

This example shows how text in the color `rgb(154, 126, 108)` looks like.

```
.text, #text, p{  
    color:rgb(154, 126, 108)  
}
```

If you want to add a text shadow in that color use the text-shadow property, you can generate a text shadow directly with our [CSS Text Shadow Generator](#).

Here you see how black text with a 4 pixel rgb(154, 126, 108) colored shadow looks like.

```
.shadow{ text-shadow: 4px 4px 2px rgb(154, 126, 108) }
```

Border

The CSS property to change the border of an element to CIELCh 55, 16.003, 59.985 is called "border". The border property can be set on classes, ids or directly on the HTML element.

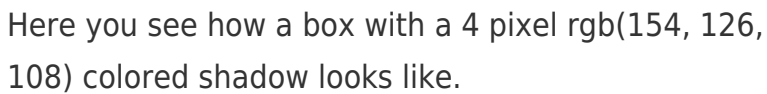
This example shows the color as border, it can be applied via the CSS property "border" or "border-color".

```
.border, #border, table{ border:4px solid rgb(154, 126, 108) }
```

If only the border color should be changed use the property `border-color`.

```
.border{ border-color:rgb(154, 126, 108) }
```

If you want to add a box shadow in that color use:



Here you see how a box with a 4 pixel `rgb(154, 126, 108)` colored shadow looks like.

```
.boxshadow{ -moz-box-shadow:4px 4px 4px 4px rgb(154, 126, 108); -webkit-box-shadow:4px 4px 4px 4px rgb(154, 126, 108); box-shadow:4px 4px 4px 4px rgb(154, 126, 108) }
```

Background

The CSS property to change the background color of an element to CIELCh 55, 16.003, 59.985 is called "background". The background property can be set on classes, ids or directly on the HTML element.

```
.background, #background, body{  
background: rgb(154, 126, 108) }
```

If only the background color should be changed can be used:

```
.background{ background-color: rgb(154,  
126, 108) }
```

This example shows the color as background, it is applied via the CSS property "background".

To optimize and compress your CSS code, you can use our [online CSS compressor and optimizer](#) based on csstidy. If you want to create a linear or radial gradient as background or border, check our [CSS Gradient Generator](#).

Hey! You found this booklet interesting? Support Converting Colors with the new Membership Option!

The pro membership hides all ads, plus gives you double the colors in the color bucket, and more awesome pro features!

[Learn more, Memberships starting at \\$2.50/m!](#)

**Follow me
on Twitter!**

@ConvertingColor