

Converting Colors

CIELCh(55, 24.701, 22.283)

Have a look what the booklet for
CIELCh(55, 24.701, 22.283) contains.

CIELCh(55, 25.131, 22.328)	3
<i>Conversions</i>	4
<i>Details</i>	6
<i>Harmonies</i>	11
<i>Previews</i>	20
<i>Color Blindness Simulation</i>	23
<i>CSS Examples</i>	26

Color

CIELCh(55, 25.131, 22.328)

Conversions

Conversions Part 1

Format	Color
Hex	AF7474
RGB	175, 116, 116
RGB Percent	69%, 45%, 45%
CMY	0.3130, 0.5444, 0.5444
CMYK	0.00, 0.34, 0.34, 0.31
HSL	0°, 27%, 57%
HSV	0°, 34%, 69%
XYZ	27.1475, 22.9298, 19.5688
YIQ	133.6410, 35.1640, 12.5080

Conversions

Conversions Part 2

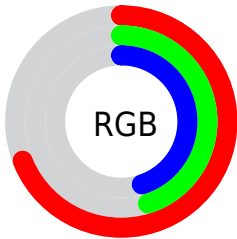
Format	Color
R_{YB}	175, 116, 116
Decimal	11498612
CIE _{Lab}	55.00, 23.25, 9.55
CIE _{LCh}	55, 25.131, 22.328
Yxy	22.9298, 0.3898, 0.3292
Android (android.graphics.Color)	4289688692 (0xFFAF7474)
YUV	133.6410, -8.6970, 36.2718
Hunter-Lab	47.8851, 17.3979, 9.2901

Details

The CIELCh color **55, 25.131, 22.328** is a dark color, and the websafe version is hex **996666**. A complement of this color would be **68, 19.964, 197.797**, and the grayscale version is **56, 0.007, 296.813**.

A 20% lighter version of the original color is **75, 24.969, 22.801**, and **35, 25.280, 22.390** is the 20% darker color. If you saturate the color by 10%, you get **51, 33.707, 23.837**, and if you desaturate by 10%, it is **60, 17.029, 21.174**.

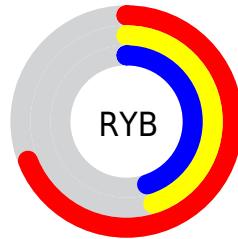
Distribution



Red (69%)

Green (45%)

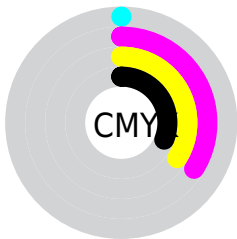
Blue (45%)



Red (69%)

Yellow (45%)

Blue (45%)

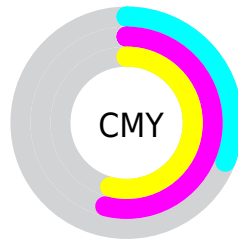


Cyan (0%)

Magenta (34%)

Yellow (34%)

Black (31%)



Cyan (31%)

Magenta (54%)

Yellow (54%)

Brightness & Saturation Gradients

These gradients show how the CIELCh color 55, 25.131, 22.328 changes by changing the brightness by 10 percent. The first figure shows a shift by +10% for each color and the second figure -10%.

Similar to the brightness gradients but the following saturation gradients show a change of the CIELCh color 55, 25.131, 22.328 by changing the saturation by 10% instead.

■ 55, 25.131, 22.328

■ 55, 25.131, 22.328

■ 100, 25.131,
22.328

■ 45, 25.131, 22.328

■ 75, 25.131, 22.328

■ 35, 25.131, 22.328

■ 85, 25.131, 22.328

■ 25, 25.131, 22.328

■ 95, 25.131, 22.328

■ 15, 25.131, 22.328

■ 5, 25.131, 22.328

■ 0, 25.131, 22.328

■ 55, 25.131, 22.328

■ 55, 25.131, 22.328

■ 51, 33.707, 23.837

■ 60, 17.029, 21.174

■ 46, 42.627, 25.793

■ 65, 9.468, 20.267

43, 51.669, 28.302

70, 2.454, 19.430

40, 60.524, 31.400

75, 4.037, 199.220

38, 68.735, 34.911

80, 10.047,
198.721

37, 75.367, 38.158

85, 15.627,
198.363

36, 78.849, 39.947

90, 20.824,
198.079

95, 25.335,
197.855

Harmonies

Complementary

The Complementary color scheme is a pair of colors which are on the opposite of each other on the color wheel.



55, 25.131, 22.328



68, 19.964, 197.797

Rectangle

The Rectangle color scheme consists of four colors that form a rectangle on the color wheel.



55, 25.131, 22.328



55, 25.131, 72.328



55, 25.131, 202.328



55, 25.131, 252.328

Sweetspot

The Sweet Spot groups the original color and five complimentary colors.



55, 25.129, 22.332



84, 8.421, 19.987



57, 39.572, 326.233



44, 5.823, 20.095



96, 0.011, 296.813



48, 0.006, 296.813

Same Dimension

The Same Dimension uses a secret algorithm to generate beautiful new colors.



55, 25.129, 22.332



66, 37.725, 23.343



62, 20.905, 71.281



34, 3.817, 19.918



31, 69.981, 39.448



2, 7.801, 19.412

Inverse Universe

The Inverse Universe completely reimagines the original color for something new.



68, 19.964, 197.797



85, 28.376, 197.521



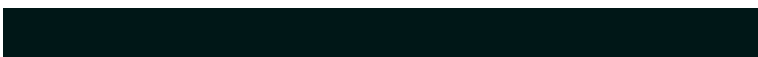
59, 19.048, 260.800



36, 3.603, 198.999



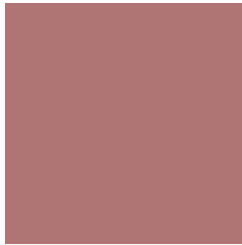
56, 33.802, 196.403



6, 7.800, 199.436

Previews

White Background



This preview shows how the CIELCh color 55, 25.131, 22.328 looks on a white background.

Color Contrast Check

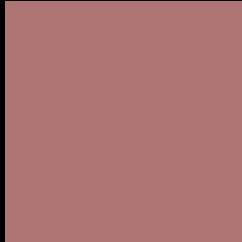
Large Text (above 18pt) WCAG AA ✓ Pass

Any Text WCAG AA ✗ Fail

Large Text (above 18pt) WCAG AAA ✗ Fail

Any Text WCAG AAA ✗ Fail

Black Background



This preview shows how the CIE LCh color 55, 25.131, 22.328 looks on a black background.

Color Contrast Check

Large Text (above 18pt) WCAG AA ✓ Pass

Any Text WCAG AA ✓ Pass

Large Text (above 18pt) WCAG AAA ✓ Pass

Any Text WCAG AAA × Fail

If you want to check with other color combinations, try the [Color Contrast Checker](#).

CIELCh 55, 25.131, 22.328

Background



This preview shows how black text looks on a background with the CIELCh color 55, 25.131, 22.328.



This preview shows how white text looks on a background with the CIELCh color 55, 25.131, 22.328.

Color Blindness Simulation

Color vision deficiency is a very complex topic, and I could not describe the different causes any better than Wikipedia does, so if you want to learn more, you should check out their [article about color blindness](#).

Dichromacy



Original Color

55, 25.131, 22.328

Protanopia

55, 4.841, 90.033

Deuteranopia

55, 12.668, 55.916



Tritanopia
55, 25.776, 11.218

Trichromacy



Original Color
55, 25.131, 22.328

Protanomaly
55, 10.393, 36.271

Deuteranomaly
55, 16.474, 36.962

Tritanomaly
55, 25.744, 14.984

Monochromacy



Original Color
55, 25.131, 22.328

Achromatopsia
56, 0.007, 296.813

Achromatomaly
55, 8.550, 20.277

CSS Examples

Text

The CSS property to change the color of the text to CIELCh 55, 25.131, 22.328 is called "color". The color property can be set on classes, ids or directly on the HTML element.

This example shows how text in the color `rgb(175, 116, 116)` looks like.

```
.text, #text, p{  
    color:rgb(175, 116, 116)  
}
```

If you want to add a text shadow in that color use the text-shadow property, you can generate a text shadow directly with our [CSS Text Shadow Generator](#).

Here you see how black text with a 4 pixel rgb(175, 116, 116) colored shadow looks like.

```
.shadow{ text-shadow: 4px 4px 2px rgb(175, 116, 116) }
```

Border

The CSS property to change the border of an element to CIELCh 55, 25.131, 22.328 is called "border". The border property can be set on classes, ids or directly on the HTML element.

This example shows the color as border, it can be applied via the CSS property "border" or "border-color".

```
.border, #border, table{ border:4px solid rgb(175, 116, 116) }
```

If only the border color should be changed use the property `border-color`.

```
.border{ border-color:rgb(175, 116, 116) }
```

If you want to add a box shadow in that color use:

Here you see how a box with a 4 pixel `rgb(175, 116, 116)` colored shadow looks like.

```
.boxshadow{ -moz-box-shadow:4px 4px 4px  
4px rgb(175, 116, 116); -webkit-box-  
shadow:4px 4px 4px 4px rgb(175, 116, 116);  
box-shadow:4px 4px 4px 4px rgb(175, 116,  
116) }
```

Background

The CSS property to change the background color of an element to CIELCh 55, 25.131, 22.328 is called "background". The background property can be set on classes, ids or directly on the HTML element.

```
.background, #background, body{  
background: rgb(175, 116, 116) }
```

If only the background color should be changed can be used:

```
.background{ background-color: rgb(175,  
116, 116) }
```

This example shows the color as background, it is applied via the CSS property "background".

To optimize and compress your CSS code, you can use our [online CSS compressor and optimizer](#) based on csstidy. If you want to create a linear or radial gradient as background or border, check our [CSS Gradient Generator](#).

Hey! You found this booklet interesting? Support Converting Colors with the new Membership Option!

The pro membership hides all ads, plus gives you double the colors in the color bucket, and more awesome pro features!

[Learn more, Memberships starting at \\$2.50/m!](#)

**Follow me
on Twitter!**

@ConvertingColor