

Converting Colors

CIELCh(55, 32.277, 26.196)

Have a look what the booklet for
CIELCh(55, 32.277, 26.196) contains.

CIELCh(55, 32.277, 26.196)	3
<i>Conversions</i>	4
<i>Details</i>	6
<i>Harmonies</i>	11
<i>Previews</i>	20
<i>Color Blindness Simulation</i>	23
<i>CSS Examples</i>	26

Color

CIELCh(55, 32.277, 26.196)

Conversions

Conversions Part 1

Format	Color
Hex	B96F6C
RGB	185, 111, 108
RGB Percent	73%, 44%, 42%
CMY	0.2726, 0.5630, 0.5748
CMYK	0.00, 0.40, 0.42, 0.27
HSL	2°, 36%, 58%
HSV	2°, 42%, 73%
XYZ	28.5857, 22.9298, 17.2240
YIQ	132.7840, 45.0670, 14.7550

Conversions

Conversions Part 2

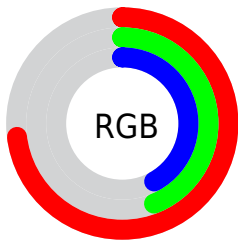
Format	Color
R _Y B	185, 111, 108
Decimal	12152684
CIE Lab	55.00, 28.96, 14.25
CIE LCh	55, 32.277, 26.196
Yxy	22.9298, 0.4159, 0.3336
Android (android.graphics.Color)	4290342764 (0xFFB96F6C)
YUV	132.7840, -12.2185, 45.7934
Hunter-Lab	47.8851, 22.7590, 12.1933

Details

The CIELCh color **55, 32.277, 26.196** is a dark color, and the websafe version is hex **996666**. A complement of this color would be **70, 23.899, 201.556**, and the grayscale version is **56, 0.007, 296.813**.

A 20% lighter version of the original color is **75, 32.101, 26.942**, and **35, 32.026, 26.180** is the 20% darker color. If you saturate the color by 10%, you get **51, 41.390, 27.805**, and if you desaturate by 10%, it is **60, 23.619, 24.977**.

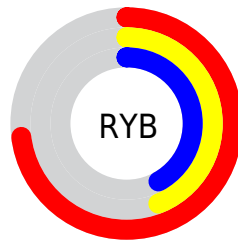
Distribution



Red (73%)

Green (44%)

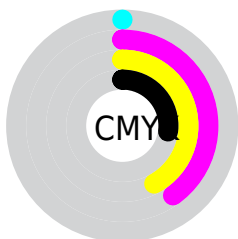
Blue (42%)



Red (73%)

Yellow (44%)

Blue (42%)

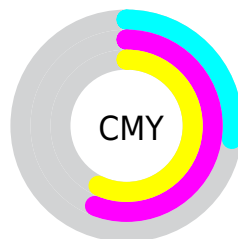


Cyan (0%)

Magenta (40%)

Yellow (42%)

Black (27%)



Cyan (27%)

Magenta (56%)

Yellow (57%)

Brightness & Saturation Gradients

These gradients show how the CIELCh color 55, 32.277, 26.196 changes by changing the brightness by 10 percent. The first figure shows a shift by +10% for each color and the second figure -10%.

Similar to the brightness gradients but the following saturation gradients show a change of the CIELCh color 55, 32.277, 26.196 by changing the saturation by 10% instead.

■ 55, 32.277, 26.196

■ 55, 32.277, 26.196

■ 100, 32.277,
26.196

■ 45, 32.277, 26.196

■ 75, 32.277, 26.196

■ 35, 32.277, 26.196

■ 85, 32.277, 26.196

■ 25, 32.277, 26.196

■ 95, 32.277, 26.196

■ 15, 32.277, 26.196

■ 5, 32.277, 26.196

■ 0, 32.277, 26.196

■ 55, 32.277, 26.196

■ 55, 32.277, 26.196

■ 51, 41.390, 27.805

■ 60, 23.619, 24.977

■ 47, 50.794, 29.880

■ 64, 15.514, 24.048

44, 60.212, 32.464

69, 7.989, 23.326

41, 69.208, 35.444

75, 1.029, 22.363

40, 76.902, 38.307

80, 5.402, 202.580

39, 81.786, 40.410

85, 11.352,
202.237

90, 16.875,
202.002

95, 22.088,
199.377

96, 22.418,
198.036

Harmonies

Complementary

The Complementary color scheme is a pair of colors which are on the opposite of each other on the color wheel.



55, 32.277, 26.196



70, 23.899, 201.556

Rectangle

The Rectangle color scheme consists of four colors that form a rectangle on the color wheel.



55, 32.277, 26.196



55, 32.277, 76.196



55, 32.277, 206.196



55, 32.277, 256.196

Sweetspot

The Sweet Spot groups the original color and five complimentary colors.



55, 32.275, 26.200



88, 10.340, 23.369



57, 49.596, 327.591



46, 6.951, 23.456



98, 0.011, 296.813



51, 0.007, 296.813

Same Dimension

The Same Dimension uses a secret algorithm to generate beautiful new colors.



55, 32.275, 26.200



66, 49.765, 27.677



64, 27.906, 73.617



36, 3.853, 23.181



32, 71.335, 40.164



2, 10.337, 21.860

Inverse Universe

The Inverse Universe completely reimagines the original color for something new.



70, 23.899, 201.556



88, 34.043, 201.465



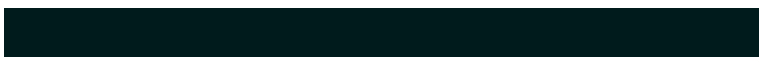
59, 25.429, 266.194



38, 3.631, 202.506



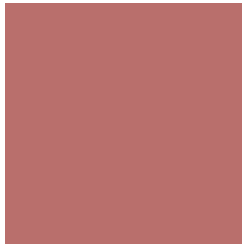
56, 32.869, 202.688



8, 9.886, 203.194

Previews

White Background



This preview shows how the CIELCh color 55, 32.277, 26.196 looks on a white background.

Color Contrast Check

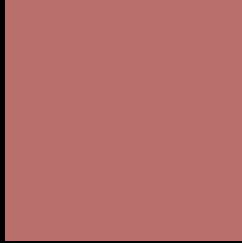
Large Text (above 18pt) WCAG AA ✓ Pass

Any Text WCAG AA ✗ Fail

Large Text (above 18pt) WCAG AAA ✗ Fail

Any Text WCAG AAA ✗ Fail

Black Background



This preview shows how the CIE LCh color 55, 32.277, 26.196 looks on a black background.

Color Contrast Check

Large Text (above 18pt) WCAG AA ✓ Pass

Any Text WCAG AA ✓ Pass

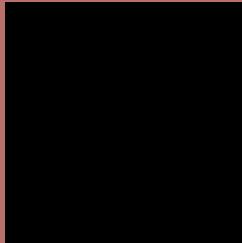
Large Text (above 18pt) WCAG AAA ✓ Pass

Any Text WCAG AAA × Fail

If you want to check with other color combinations, try the [Color Contrast Checker](#).

CIELCh 55, 32.277, 26.196

Background



This preview shows how black text looks on a background with the CIELCh color 55, 32.277, 26.196.



This preview shows how white text looks on a background with the CIELCh color 55, 32.277, 26.196.

Color Blindness Simulation

Color vision deficiency is a very complex topic, and I could not describe the different causes any better than Wikipedia does, so if you want to learn more, you should check out their [article about color blindness](#).

Dichromacy



Original Color

55, 32.277, 26.196

Protanopia

55, 8.366, 91.958

Deuteranopia

55, 16.903, 64.961



Tritanopia
55, 32.253, 15.502

Trichromacy



Original Color
55, 32.277, 26.196

Protanomaly
55, 14.024, 44.476

Deuteranomaly
55, 20.967, 43.431

Tritanomaly
55, 31.972, 19.339

Monochromacy



Original Color
55, 32.277, 26.196

Achromatopsia
56, 0.007, 296.813

Achromatomaly
55, 11.160, 23.498

CSS Examples

Text

The CSS property to change the color of the text to CIELCh 55, 32.277, 26.196 is called "color". The color property can be set on classes, ids or directly on the HTML element.

This example shows how text in the color `rgb(185, 111, 108)` looks like.

```
.text, #text, p{  
    color:rgb(185, 111, 108)  
}
```

If you want to add a text shadow in that color use the text-shadow property, you can generate a text shadow directly with our [CSS Text Shadow Generator](#).

Here you see how black text with a 4 pixel rgb(185, 111, 108) colored shadow looks like.

```
.shadow{ text-shadow: 4px 4px 2px rgb(185, 111, 108) }
```

Border

The CSS property to change the border of an element to CIELCh 55, 32.277, 26.196 is called "border". The border property can be set on classes, ids or directly on the HTML element.

This example shows the color as border, it can be applied via the CSS property "border" or "border-color".

```
.border, #border, table{ border:4px solid rgb(185, 111, 108) }
```

If only the border color should be changed use the property `border-color`.

```
.border{ border-color:rgb(185, 111, 108) }
```

If you want to add a box shadow in that color use:

Here you see how a box with a 4 pixel `rgb(185, 111, 108)` colored shadow looks like.

```
.boxshadow{ -moz-box-shadow:4px 4px 4px  
4px rgb(185, 111, 108); -webkit-box-  
shadow:4px 4px 4px 4px rgb(185, 111, 108);  
box-shadow:4px 4px 4px 4px rgb(185, 111,  
108) }
```

Background

The CSS property to change the background color of an element to CIELCh 55, 32.277, 26.196 is called "background". The background property can be set on classes, ids or directly on the HTML element.

```
.background, #background, body{  
background: rgb(185, 111, 108) }
```

If only the background color should be changed can be used:

```
.background{ background-color: rgb(185,  
111, 108) }
```

This example shows the color as background, it is applied via the CSS property "background".

To optimize and compress your CSS code, you can use our [online CSS compressor and optimizer](#) based on csstidy. If you want to create a linear or radial gradient as background or border, check our [CSS Gradient Generator](#).

Hey! You found this booklet interesting? Support Converting Colors with the new Membership Option!

The pro membership hides all ads, plus gives you double the colors in the color bucket, and more awesome pro features!

[Learn more, Memberships starting at \\$2.50/m!](#)

**Follow me
on Twitter!**

@ConvertingColor