

Converting Colors

CIELCh(55, 55.258, 10.304)

Have a look what the booklet for
CIELCh(55, 55.258, 10.304) contains.

CIELCh(55, 55.135, 10.216)	3
<i>Conversions</i>	4
<i>Details</i>	6
<i>Harmonies</i>	11
<i>Previews</i>	20
<i>Color Blindness Simulation</i>	23
<i>CSS Examples</i>	26

Color

CIELCh(55, 55.135, 10.216)

Conversions

Conversions Part 1

Format	Color
Hex	DA5675
RGB	218, 86, 117
RGB Percent	85%, 34%, 46%
CMY	0.1441, 0.6618, 0.5403
CMYK	0.00, 0.60, 0.46, 0.14
HSL	346°, 64%, 60%
HSV	346°, 60%, 86%
XYZ	35.5635, 22.9298, 19.4487
YIQ	129.0020, 68.7210, 37.6250

Conversions

Conversions Part 2

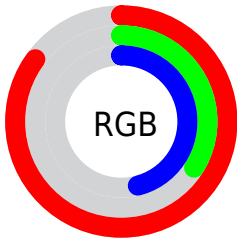
Format	Color
R_{YB}	218, 86, 117
Decimal	14308981
CIE _{Lab}	55.00, 54.26, 9.78
CIE _{LCh}	55, 55.135, 10.216
Yxy	22.9298, 0.4563, 0.2942
Android (android.graphics.Color)	4292499061 (0xFFDA5675)
YUV	129.0020, -5.9170, 78.0512
Hunter-Lab	47.8851, 48.7701, 9.4387

Details

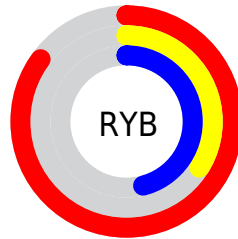
The CIELCh color **55, 55.135, 10.216** is a dark color, and the websafe version is hex **CC3366**. The color can be described as middle muted rose. A complement of this color would be **80, 43.698, 174.060**, and the grayscale version is **54, 0.007, 296.813**.

A 20% lighter version of the original color is **72, 46.250, 5.751**, and **35, 55.008, 10.261** is the 20% darker color. If you saturate the color by 10%, you get **51, 63.373, 13.399**, and if you desaturate by 10%, it is **59, 46.104, 7.708**.

Distribution



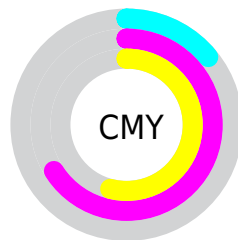
- Red (85%)
- Green (34%)
- Blue (46%)



- Red (85%)
- Yellow (34%)
- Blue (46%)



- Cyan (0%)
- Magenta (60%)
- Yellow (46%)
- Black (14%)



- Cyan (14%)
- Magenta (66%)
- Yellow (54%)


Brightness & Saturation Gradients

These gradients show how the CIELCh color 55, 55.135, 10.216 changes by changing the brightness by 10 percent. The first figure shows a shift by +10% for each color and the second figure -10%.

Similar to the brightness gradients but the following saturation gradients show a change of the CIELCh color 55, 55.135, 10.216 by changing the saturation by 10% instead.

 55, 55.135, 10.216

 55, 55.135, 10.216

 100, 55.135,
10.216

 45, 55.135, 10.216

 75, 55.135, 10.216

 35, 55.135, 10.216

 85, 55.135, 10.216

 25, 55.135, 10.216

 95, 55.135, 10.216

 15, 55.135, 10.216

 5, 55.135, 10.216

 0, 55.135, 10.216

 55, 55.135, 10.216

 55, 55.135, 10.216

 51, 63.373, 13.399

 59, 46.104, 7.708

 49, 70.497, 17.403

 64, 36.683, 5.709

47, 76.402, 22.284

70, 27.208, 4.089

46, 81.256, 27.419

75, 17.918, 2.747

81, 8.961, 1.596

87, 0.408, 359.389

93, 7.716, 179.929

97, 12.680,
189.031

98, 12.364,
198.680

Harmonies

Complementary

The Complementary color scheme is a pair of colors which are on the opposite of each other on the color wheel.



55, 55.135, 10.216



80, 43.698, 174.060

Rectangle

The Rectangle color scheme consists of four colors that form a rectangle on the color wheel.



55, 55.135, 10.216



55, 55.135, 60.216



55, 55.135, 190.216



55, 55.135, 240.216

Sweetspot

The Sweet Spot groups the original color and five complimentary colors.



55, 55.132, 10.218



88, 17.770, 2.465



54, 78.381, 319.663



45, 12.429, 2.822



0, 0.000, 0.000



53, 0.007, 296.813

Same Dimension

The Same Dimension uses a secret algorithm to generate beautiful new colors.



55, 55.132, 10.218



59, 73.948, 14.568



61, 49.992, 44.570



43, 4.858, 1.482



36, 67.936, 26.456



5, 23.777, 10.119

Inverse Universe

The Inverse Universe completely reimagines the original color for something new.



55, 55.132, 10.218



59, 73.948, 14.568



71, 31.786, 232.634



43, 4.858, 1.482



36, 67.936, 26.456



5, 23.777, 10.119

Previews

White Background



This preview shows how the CIELCh color 55, 55.135, 10.216 looks on a white background.

Color Contrast Check

Large Text (above 18pt) WCAG AA ✓ Pass

Any Text WCAG AA ✗ Fail

Large Text (above 18pt) WCAG AAA ✗ Fail

Any Text WCAG AAA ✗ Fail

Black Background



This preview shows how the CIELCh color 55, 55.135, 10.216 looks on a black background.

Color Contrast Check

Large Text (above 18pt) WCAG AA ✓ Pass

Any Text WCAG AA ✓ Pass

Large Text (above 18pt) WCAG AAA ✓ Pass

Any Text WCAG AAA × Fail

If you want to check with other color combinations, try the [Color Contrast Checker](#).

CIELCh 55, 55.135, 10.216

Background



This preview shows how black text looks on a background with the CIELCh color 55, 55.135, 10.216.

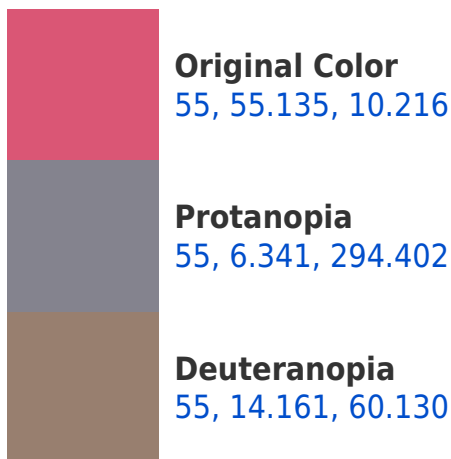


This preview shows how white text looks on a background with the CIELCh color 55, 55.135, 10.216.

Color Blindness Simulation

Color vision deficiency is a very complex topic, and I could not describe the different causes any better than Wikipedia does, so if you want to learn more, you should check out their [article about color blindness](#).

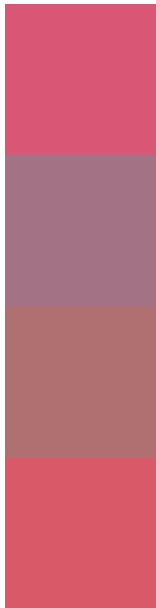
Dichromacy





Tritanopia
55, 55.009, 23.819

Trichromacy



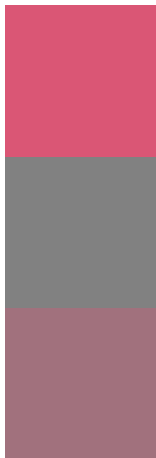
Original Color
55, 55.135, 10.216

Protanomaly
54, 21.815, 354.002

Deuteranomaly
54, 27.399, 21.524

Tritanomaly
55, 54.322, 18.798

Monochromacy



Original Color
55, 55.135, 10.216

Achromatopsia
54, 0.007, 296.813

Achromatomaly
53, 20.814, 2.768

CSS Examples

Text

The CSS property to change the color of the text to CIELCh 55, 55.135, 10.216 is called "color". The color property can be set on classes, ids or directly on the HTML element.

This example shows how text in the color `rgb(218, 86, 117)` looks like.

```
.text, #text, p{  
    color:rgb(218, 86, 117)  
}
```

If you want to add a text shadow in that color use the text-shadow property, you can generate a text shadow directly with our [CSS Text Shadow Generator](#).

Here you see how black text with a 4 pixel rgb(218, 86, 117) colored shadow looks like.

```
.shadow{ text-shadow: 4px 4px 2px rgb(218, 86, 117) }
```

Border

The CSS property to change the border of an element to CIELCh 55, 55.135, 10.216 is called "border". The border property can be set on classes, ids or directly on the HTML element.

This example shows the color as border, it can be applied via the CSS property "border" or "border-color".

```
.border, #border, table{ border:4px solid rgb(218, 86, 117) }
```

If only the border color should be changed use the property `border-color`.

```
.border{ border-color:rgb(218, 86, 117) }
```

If you want to add a box shadow in that color use:

Here you see how a box with a 4 pixel `rgb(218, 86, 117)` colored shadow looks like.

```
.boxshadow{ -moz-box-shadow:4px 4px 4px  
4px rgb(218, 86, 117); -webkit-box-  
shadow:4px 4px 4px 4px rgb(218, 86, 117);  
box-shadow:4px 4px 4px 4px rgb(218, 86,  
117) }
```

Background

The CSS property to change the background color of an element to CIELCh 55, 55.135, 10.216 is called "background". The background property can be set on classes, ids or directly on the HTML element.

```
.background, #background, body{  
background: rgb(218, 86, 117) }
```

If only the background color should be changed can be used:

```
.background{ background-color: rgb(218, 86,  
117) }
```

This example shows the color as background, it is applied via the CSS property "background".

To optimize and compress your CSS code, you can use our [online CSS compressor and optimizer](#) based on csstidy. If you want to create a linear or radial gradient as background or border, check our [CSS Gradient Generator](#).

Hey! You found this booklet interesting? Support Converting Colors with the new Membership Option!

The pro membership hides all ads, plus gives you double the colors in the color bucket, and more awesome pro features!

[Learn more, Memberships starting at \\$2.50/m!](#)

**Follow me
on Twitter!**

@ConvertingColor