

Converting Colors

CIELCh(55, 59.585, 9.156)

Have a look what the booklet for
CIELCh(55, 59.585, 9.156) contains.

| | |
|--|----|
| CIELCh(55, 59.561, 9.074) | 3 |
| <i>Conversions</i> | 4 |
| <i>Details</i> | 6 |
| <i>Harmonies</i> | 11 |
| <i>Previews</i> | 20 |
| <i>Color Blindness Simulation</i> | 23 |
| <i>CSS Examples</i> | 26 |

Color

CIELCh(55, 59.561, 9.074)

Conversions

Conversions Part 1

| Format | Color |
|---------------|----------------------------|
| Hex | E05076 |
| RGB | 224, 80, 118 |
| RGB Percent | 88%, 31%, 46% |
| CMY | 0.1211, 0.6858, 0.5369 |
| CMYK | 0.00, 0.64, 0.47, 0.12 |
| HSL | 344°, 70%, 60% |
| HSV | 344°, 64%, 88% |
| XYZ | 36.9294, 22.9298, 19.6490 |
| YIQ | 127.3880, 73.6260, 42.3460 |

Conversions

Conversions Part 2

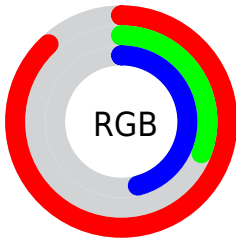
| Format | Color |
|-------------------------------------|-------------------------------|
| R_{YB} | 224, 80, 118 |
| Decimal | 14700662 |
| CIE _{Lab} | 55.00, 58.82, 9.39 |
| CIE _{LCh} | 55, 59.561, 9.074 |
| Yxy | 22.9298, 0.4645, 0.2884 |
| Android (android.graphics.Color) | 4292890742 (0xFFE05076) |
| YUV | 127.3880, -4.6283, 84.7287 |
| Hunter-Lab | 47.8851, 53.8616, 9.1907 |

Details

The CIELCh color **55, 59.561, 9.074** is a dark color, and the websafe version is hex **CC3366**. The color can be described as middle muted rose. A complement of this color would be **81, 47.889, 171.173**, and the grayscale version is **53, 0.007, 296.813**.

A 20% lighter version of the original color is **71, 48.698, 3.163**, and **35, 59.673, 9.251** is the 20% darker color. If you saturate the color by 10%, you get **52, 67.295, 12.486**, and if you desaturate by 10%, it is **59, 50.770, 6.387**.

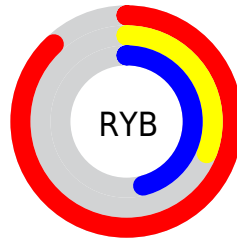
Distribution



Red (88%)

Green (31%)

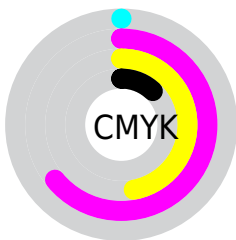
Blue (46%)



Red (88%)

Yellow (31%)

Blue (46%)

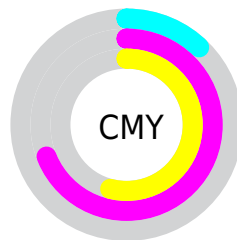


Cyan (0%)

Magenta (64%)

Yellow (47%)

Black (12%)



Cyan (12%)

Magenta (69%)

Yellow (54%)

Brightness & Saturation Gradients

These gradients show how the CIELCh color 55, 59.561, 9.074 changes by changing the brightness by 10 percent. The first figure shows a shift by +10% for each color and the second figure -10%.

Similar to the brightness gradients but the following saturation gradients show a change of the CIELCh color 55, 59.561, 9.074 by changing the saturation by 10% instead.

 55, 59.561, 9.074  55, 59.561, 9.074

 100, 59.561, 9.074  45, 59.561, 9.074


 75, 59.561, 9.074  35, 59.561, 9.074

 85, 59.561, 9.074  25, 59.561, 9.074

 95, 59.561, 9.074  15, 59.561, 9.074

 5, 59.561, 9.074

 0, 59.561, 9.074

 55, 59.561, 9.074  55, 59.561, 9.074

 52, 67.295, 12.486  59, 50.770, 6.387

 49, 73.701, 16.767  64, 41.345, 4.252

48, 78.815, 21.938

69, 31.677, 2.527

47, 81.486, 25.094

75, 22.064, 1.102

81, 12.704,
359.894

87, 3.707, 358.772

93, 4.879, 178.139

98, 10.893,
185.474

98, 10.461,
198.808

Harmonies

Complementary

The Complementary color scheme is a pair of colors which are on the opposite of each other on the color wheel.



55, 59.561, 9.074



81, 47.889, 171.173

Rectangle

The Rectangle color scheme consists of four colors that form a rectangle on the color wheel.



55, 59.561, 9.074



55, 59.561, 59.074



55, 59.561, 189.074



55, 59.561, 239.074

Sweetspot

The Sweet Spot groups the original color and five complimentary colors.



55, 59.558, 9.076



87, 19.003, 0.462



54, 84.224, 319.217



45, 13.154, 0.816



0, 0.000, 0.000



53, 0.007, 296.813

Same Dimension

The Same Dimension uses a secret algorithm to generate beautiful new colors.



55, 59.558, 9.076



58, 76.691, 13.799



60, 55.470, 43.392



44, 5.013, 359.363



37, 67.554, 24.085



6, 25.309, 9.568

Inverse Universe

The Inverse Universe completely reimagines the original color for something new.



55, 59.558, 9.076



58, 76.691, 13.799



72, 33.672, 230.814



44, 5.013, 359.363



37, 67.554, 24.085



6, 25.309, 9.568

Previews

White Background



This preview shows how the CIELCh color 55, 59.561, 9.074 looks on a white background.

Color Contrast Check

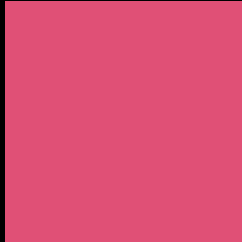
Large Text (above 18pt) WCAG AA ✓ Pass

Any Text WCAG AA ✗ Fail

Large Text (above 18pt) WCAG AAA ✗ Fail

Any Text WCAG AAA ✗ Fail

Black Background



This preview shows how the CIELCh color 55, 59.561, 9.074 looks on a black background.

Color Contrast Check

Large Text (above 18pt) WCAG AA ✓ Pass

Any Text WCAG AA ✓ Pass

Large Text (above 18pt) WCAG AAA ✓ Pass

Any Text WCAG AAA × Fail

If you want to check with other color combinations, try the [Color Contrast Checker](#).

CIELCh 55, 59.561, 9.074

Background



This preview shows how black text looks on a background with the CIELCh color 55, 59.561, 9.074.

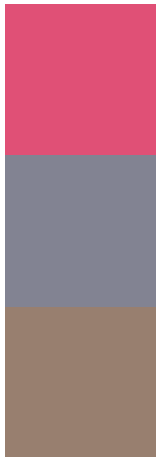


This preview shows how white text looks on a background with the CIELCh color 55, 59.561, 9.074.

Color Blindness Simulation

Color vision deficiency is a very complex topic, and I could not describe the different causes any better than Wikipedia does, so if you want to learn more, you should check out their [article about color blindness](#).

Dichromacy



Original Color
55, 59.561, 9.074

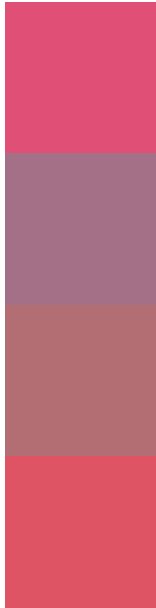
Protanopia
55, 8.622, 288.718

Deuteranopia
55, 14.161, 60.130



Tritanopia
55, 59.154, 25.349

Trichromacy



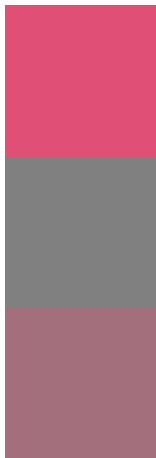
Original Color
55, 59.561, 9.074

Protanomaly
53, 24.742, 348.827

Deuteranomaly
54, 29.015, 18.556

Tritanomaly
55, 58.736, 19.424

Monochromacy



Original Color
55, 59.561, 9.074

Achromatopsia
54, 0.007, 296.813

Achromatomaly
53, 22.576, 3.069

CSS Examples

Text

The CSS property to change the color of the text to CIELCh 55, 59.561, 9.074 is called "color". The color property can be set on classes, ids or directly on the HTML element.

This example shows how text in the color `rgb(224, 80, 118)` looks like.

```
.text, #text, p{  
    color:rgb(224, 80, 118)  
}
```

If you want to add a text shadow in that color use the text-shadow property, you can generate a text shadow directly with our [CSS Text Shadow Generator](#).

Here you see how black text with a 4 pixel rgb(224, 80, 118) colored shadow looks like.

```
.shadow{ text-shadow: 4px 4px 2px rgb(224, 80, 118) }
```

Border

The CSS property to change the border of an element to CIELCh 55, 59.561, 9.074 is called "border". The border property can be set on classes, ids or directly on the HTML element.

This example shows the color as border, it can be applied via the CSS property "border" or "border-color".

```
.border, #border, table{ border:4px solid rgb(224, 80, 118) }
```

If only the border color should be changed use the property `border-color`.

```
.border{ border-color:rgb(224, 80, 118) }
```

If you want to add a box shadow in that color use:

Here you see how a box with a 4 pixel `rgb(224, 80, 118)` colored shadow looks like.

```
.boxshadow{ -moz-box-shadow:4px 4px 4px  
4px rgb(224, 80, 118); -webkit-box-  
shadow:4px 4px 4px 4px rgb(224, 80, 118);  
box-shadow:4px 4px 4px 4px rgb(224, 80,  
118) }
```

Background

The CSS property to change the background color of an element to CIELCh 55, 59.561, 9.074 is called "background". The background property can be set on classes, ids or directly on the HTML element.

```
.background, #background, body{  
background: rgb(224, 80, 118) }
```

If only the background color should be changed can be used:

```
.background{ background-color: rgb(224, 80,  
118) }
```

This example shows the color as background, it is applied via the CSS property "background".

To optimize and compress your CSS code, you can use our [online CSS compressor and optimizer](#) based on csstidy. If you want to create a linear or radial gradient as background or border, check our [CSS Gradient Generator](#).

Hey! You found this booklet interesting? Support Converting Colors with the new Membership Option!

The pro membership hides all ads, plus gives you double the colors in the color bucket, and more awesome pro features!

[Learn more, Memberships starting at \\$2.50/m!](#)

**Follow me
on Twitter!**

@ConvertingColor