

Converting Colors

CIELCh(55, 65.876, 7.208)

Have a look what the booklet for
CIELCh(55, 65.876, 7.208) contains.

CIELCh(55, 65.768, 7.332)	3
<i>Conversions</i>	4
<i>Details</i>	6
<i>Harmonies</i>	11
<i>Previews</i>	20
<i>Color Blindness Simulation</i>	23
<i>CSS Examples</i>	26

Color

CIELCh(55, 65.768, 7.332)

Conversions

Conversions Part 1

Format	Color
Hex	E84678
RGB	232, 70, 120
RGB Percent	91%, 27%, 47%
CMY	0.0897, 0.7250, 0.5290
CMYK	0.00, 0.70, 0.48, 0.09
HSL	341°, 78%, 59%
HSV	341°, 70%, 91%
XYZ	38.9116, 22.9298, 20.1753
YIQ	124.1380, 80.5020, 49.8940

Conversions

Conversions Part 2

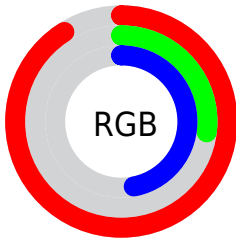
Format	Color
R_{YB}	232, 70, 120
Decimal	15222392
CIE _{Lab}	55.00, 65.23, 8.39
CIE _{LCh}	55, 65.768, 7.332
Yxy	22.9298, 0.4744, 0.2796
Android (android.graphics.Color)	4293412472 (0xFFE84678)
YUV	124.1380, -2.0400, 94.5950
Hunter-Lab	47.8851, 61.2508, 8.5391

Details

The CIELCh color **55, 65.768, 7.332** is a dark color, and the websafe version is hex **CC3366**. The color can be described as middle muted rose. A complement of this color would be **83, 54.517, 166.881**, and the grayscale version is **52, 0.007, 296.813**.

A 20% lighter version of the original color is **69, 52.286, 359.664**, and **36, 62.657, 9.306** is the 20% darker color. If you saturate the color by 10%, you get **52, 72.489, 11.061**, and if you desaturate by 10%, it is **59, 57.597, 4.397**.

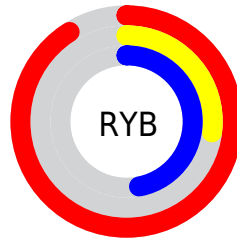
Distribution



Red (91%)

Green (27%)

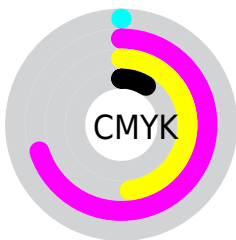
Blue (47%)



Red (91%)

Yellow (27%)

Blue (47%)

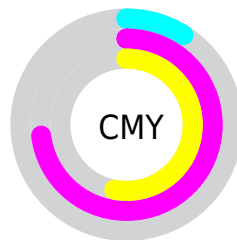


Cyan (0%)

Magenta (70%)

Yellow (48%)

Black (9%)



Cyan (9%)

Magenta (73%)

Yellow (53%)

Brightness & Saturation Gradients

These gradients show how the CIELCh color 55, 65.768, 7.332 changes by changing the brightness by 10 percent. The first figure shows a shift by +10% for each color and the second figure -10%.

Similar to the brightness gradients but the following saturation gradients show a change of the CIELCh color 55, 65.768, 7.332 by changing the saturation by 10% instead.

 55, 65.768, 7.332  55, 65.768, 7.332

 100, 65.768, 7.332  45, 65.768, 7.332

 75, 65.768, 7.332  35, 65.768, 7.332

 85, 65.768, 7.332  25, 65.768, 7.332

 95, 65.768, 7.332  15, 65.768, 7.332

 5, 65.768, 7.332

 0, 65.768, 7.332

 55, 65.768, 7.332  55, 65.768, 7.332

 52, 72.489, 11.061  59, 57.597, 4.397

 50, 77.630, 15.714  63, 48.387, 2.074

■ 49, 81.644, 21.145

■ 69, 38.592, 0.207

■ 49, 81.733, 21.260

■ 74, 28.606,
358.673

■ 80, 18.710,
357.381

■ 86, 9.080, 356.255

■ 92, 0.188, 178.183

■ 98, 8.618, 176.351

■ 98, 7.815, 198.996

Harmonies

Complementary

The Complementary color scheme is a pair of colors which are on the opposite of each other on the color wheel.



55, 65.768, 7.332



83, 54.517, 166.881

Rectangle

The Rectangle color scheme consists of four colors that form a rectangle on the color wheel.



55, 65.768, 7.332



55, 65.768, 57.332



55, 65.768, 187.332



55, 65.768, 237.332

Sweetspot

The Sweet Spot groups the original color and five complimentary colors.



55, 65.764, 7.334



86, 21.480, 357.541



52, 92.571, 317.746



44, 14.605, 357.886



0, 0.000, 0.000



53, 0.007, 296.813

Same Dimension

The Same Dimension uses a secret algorithm to generate beautiful new colors.



55, 65.764, 7.334



56, 80.599, 13.104



59, 64.858, 40.287



46, 5.313, 356.221



38, 67.507, 20.252



7, 27.799, 8.870

Inverse Universe

The Inverse Universe completely reimagines the original color for something new.



55, 65.764, 7.334



56, 80.599, 13.104



76, 36.375, 223.684



46, 5.313, 356.221



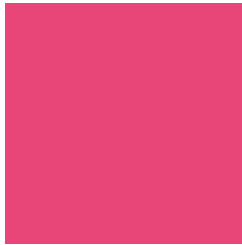
38, 67.507, 20.252



7, 27.799, 8.870

Previews

White Background



This preview shows how the CIELCh color 55, 65.768, 7.332 looks on a white background.

Color Contrast Check

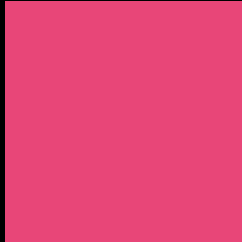
Large Text (above 18pt) WCAG AA ✓ Pass

Any Text WCAG AA ✗ Fail

Large Text (above 18pt) WCAG AAA ✗ Fail

Any Text WCAG AAA ✗ Fail

Black Background



This preview shows how the CIELCh color 55, 65.768, 7.332 looks on a black background.

Color Contrast Check

Large Text (above 18pt) WCAG AA ✓ Pass

Any Text WCAG AA ✓ Pass

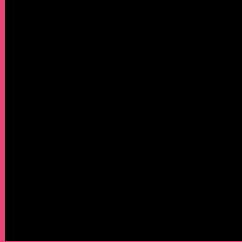
Large Text (above 18pt) WCAG AAA ✓ Pass

Any Text WCAG AAA × Fail

If you want to check with other color combinations, try the [Color Contrast Checker](#).

CIELCh 55, 65.768, 7.332

Background



This preview shows how black text looks on a background with the CIELCh color 55, 65.768, 7.332.



This preview shows how white text looks on a background with the CIELCh color 55, 65.768, 7.332.

Color Blindness Simulation

Color vision deficiency is a very complex topic, and I could not describe the different causes any better than Wikipedia does, so if you want to learn more, you should check out their [article about color blindness](#).

Dichromacy



Original Color
55, 65.768, 7.332

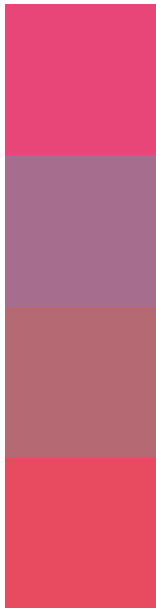
Protanopia
55, 13.235, 287.010

Deuteranopia
55, 13.768, 58.464



Tritanopia
55, 66.211, 27.121

Trichromacy



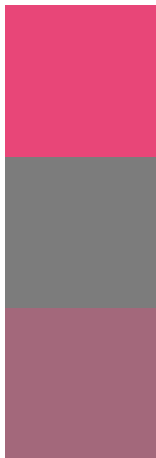
Original Color
55, 65.768, 7.332

Protanomaly
53, 29.050, 342.539

Deuteranomaly
53, 32.001, 14.469

Tritanomaly
55, 65.267, 20.234

Monochromacy



Original Color
55, 65.768, 7.332

Achromatopsia
52, 0.007, 296.813

Achromatomaly
51, 26.370, 358.533

CSS Examples

Text

The CSS property to change the color of the text to CIELCh 55, 65.768, 7.332 is called "color". The color property can be set on classes, ids or directly on the HTML element.

This example shows how text in the color `rgb(232, 70, 120)` looks like.

```
.text, #text, p{  
    color:rgb(232, 70, 120)  
}
```

If you want to add a text shadow in that color use the text-shadow property, you can generate a text shadow directly with our [CSS Text Shadow Generator](#).

Here you see how black text with a 4 pixel rgb(232, 70, 120) colored shadow looks like.

```
.shadow{ text-shadow: 4px 4px 2px rgb(232, 70, 120) }
```

Border

The CSS property to change the border of an element to CIELCh 55, 65.768, 7.332 is called "border". The border property can be set on classes, ids or directly on the HTML element.

This example shows the color as border, it can be applied via the CSS property "border" or "border-color".

```
.border, #border, table{ border:4px solid rgb(232, 70, 120) }
```

If only the border color should be changed use the property border-color.

```
.border{ border-color:rgb(232, 70, 120) }
```

If you want to add a box shadow in that color use:

Here you see how a box with a 4 pixel rgb(232, 70, 120) colored shadow looks like.

```
.boxshadow{ -moz-box-shadow:4px 4px 4px  
4px rgb(232, 70, 120); -webkit-box-  
shadow:4px 4px 4px 4px rgb(232, 70, 120);  
box-shadow:4px 4px 4px 4px rgb(232, 70,  
120) }
```

Background

The CSS property to change the background color of an element to CIELCh 55, 65.768, 7.332 is called "background". The background property can be set on classes, ids or directly on the HTML element.

```
.background, #background, body{  
background: rgb(232, 70, 120) }
```

If only the background color should be changed can be used:

```
.background{ background-color: rgb(232, 70,  
120) }
```

This example shows the color as background, it is applied via the CSS property "background".

To optimize and compress your CSS code, you can use our [online CSS compressor and optimizer](#) based on csstidy. If you want to create a linear or radial gradient as background or border, check our [CSS Gradient Generator](#).

Hey! You found this booklet interesting? Support Converting Colors with the new Membership Option!

The pro membership hides all ads, plus gives you double the colors in the color bucket, and more awesome pro features!

[Learn more, Memberships starting at \\$2.50/m!](#)

**Follow me
on Twitter!**

@ConvertingColor