

Converting Colors

CIELCh(55, 67.993, 4.646)

Have a look what the booklet for
CIELCh(55, 67.993, 4.646) contains.

CIELCh(55, 67.835, 4.590)	3
<i>Conversions</i>	4
<i>Details</i>	6
<i>Harmonies</i>	11
<i>Previews</i>	20
<i>Color Blindness Simulation</i>	23
<i>CSS Examples</i>	26

Color

CIELCh(55, 67.835, 4.590)

Conversions

Conversions Part 1

Format	Color
Hex	EA427D
RGB	234, 66, 125
RGB Percent	92%, 26%, 49%
CMY	0.0816, 0.7403, 0.5092
CMYK	0.00, 0.72, 0.47, 0.08
HSL	339°, 80%, 59%
HSV	339°, 72%, 92%
XYZ	39.6671, 22.9298, 21.7903
YIQ	122.9580, 81.1890, 53.9650

Conversions

Conversions Part 2

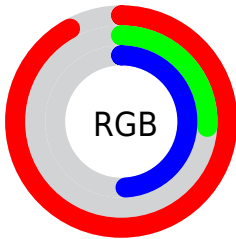
Format	Color
R_{YB}	234, 66, 125
Decimal	15352445
CIE _{Lab}	55.00, 67.62, 5.43
CIE _{LCh}	55, 67.835, 4.590
Yxy	22.9298, 0.4701, 0.2717
Android (android.graphics.Color)	4293542525 (0xFFEA427D)
YUV	122.9580, 1.0067, 97.3838
Hunter-Lab	47.8851, 64.0669, 6.5394

Details

The CIELCh color **55, 67.835, 4.590** is a dark color, and the websafe version is hex **CC3366**. The color can be described as middle muted rose. A complement of this color would be **84, 58.402, 163.556**, and the grayscale version is **52, 0.007, 296.813**.

A 20% lighter version of the original color is **69, 54.461, 356.074**, and **37, 63.127, 7.588** is the 20% darker color. If you saturate the color by 10%, you get **52, 73.864, 8.281**, and if you desaturate by 10%, it is **59, 60.130, 1.689**.

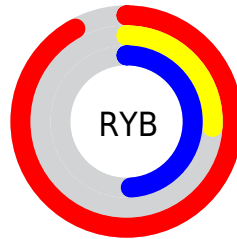
Distribution



Red (92%)

Green (26%)

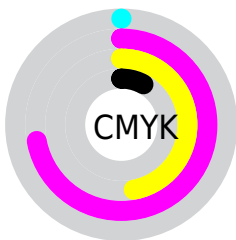
Blue (49%)



Red (92%)

Yellow (26%)

Blue (49%)

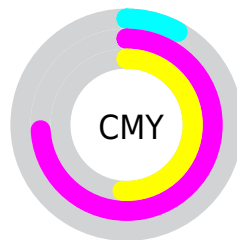


Cyan (0%)

Magenta (72%)

Yellow (47%)

Black (8%)



Cyan (8%)

Magenta (74%)

Yellow (51%)

Brightness & Saturation Gradients

These gradients show how the CIELCh color 55, 67.835, 4.590 changes by changing the brightness by 10 percent. The first figure shows a shift by +10% for each color and the second figure -10%.

Similar to the brightness gradients but the following saturation gradients show a change of the CIELCh color 55, 67.835, 4.590 by changing the saturation by 10% instead.

 55, 67.835, 4.590

 55, 67.835, 4.590

 100, 67.835, 4.590

 45, 67.835, 4.590

 75, 67.835, 4.590

 35, 67.835, 4.590

 85, 67.835, 4.590

 25, 67.835, 4.590

 95, 67.835, 4.590

 15, 67.835, 4.590

 5, 67.835, 4.590

 0, 67.835, 4.590

 55, 67.835, 4.590

 55, 67.835, 4.590

 52, 73.864, 8.281

 59, 60.130, 1.689

 50, 78.140, 12.903

 63, 51.157,

50, 80.801, 17.315

359.392

68, 41.402,
357.541

74, 31.302,
356.015

79, 21.180,
354.726

86, 11.248,
353.603

92, 1.631, 352.370

98, 7.613, 171.902

99, 7.122, 199.048

Harmonies

Complementary

The Complementary color scheme is a pair of colors which are on the opposite of each other on the color wheel.



55, 67.835, 4.590



84, 58.402, 163.556

Rectangle

The Rectangle color scheme consists of four colors that form a rectangle on the color wheel.



55, 67.835, 4.590



55, 67.835, 54.590



55, 67.835, 184.590



55, 67.835, 234.590

Sweetspot

The Sweet Spot groups the original color and five complimentary colors.



55, 67.831, 4.592



86, 22.990, 354.771



50, 95.365, 316.261



44, 15.505, 355.104



0, 0.000, 0.000



53, 0.007, 296.813

Same Dimension

The Same Dimension uses a secret algorithm to generate beautiful new colors.



55, 67.831, 4.592



56, 81.127, 10.319



57, 69.415, 37.533



46, 5.434, 353.364



38, 66.388, 16.299



7, 27.834, 6.229

Inverse Universe

The Inverse Universe completely reimagines the original color for something new.



55, 67.831, 4.592



56, 81.127, 10.319



79, 37.884, 215.712



46, 5.434, 353.364



38, 66.388, 16.299



7, 27.834, 6.229

Previews

White Background



This preview shows how the CIELCh color 55, 67.835, 4.590 looks on a white background.

Color Contrast Check

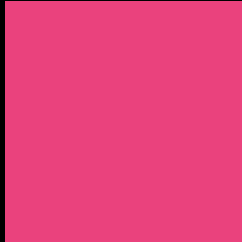
Large Text (above 18pt) WCAG AA ✓ Pass

Any Text WCAG AA ✗ Fail

Large Text (above 18pt) WCAG AAA ✗ Fail

Any Text WCAG AAA ✗ Fail

Black Background



This preview shows how the CIELCh color 55, 67.835, 4.590 looks on a black background.

Color Contrast Check

Large Text (above 18pt) WCAG AA ✓ Pass

Any Text WCAG AA ✓ Pass

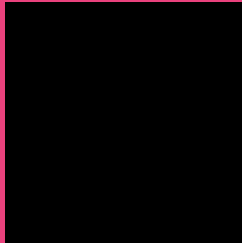
Large Text (above 18pt) WCAG AAA ✓ Pass

Any Text WCAG AAA × Fail

If you want to check with other color combinations, try the [Color Contrast Checker](#).

CIELCh 55, 67.835, 4.590

Background



This preview shows how black text looks on a background with the CIELCh color 55, 67.835, 4.590.



This preview shows how white text looks on a background with the CIELCh color 55, 67.835, 4.590.

Color Blindness Simulation

Color vision deficiency is a very complex topic, and I could not describe the different causes any better than Wikipedia does, so if you want to learn more, you should check out their [article about color blindness](#).

Dichromacy



Original Color

55, 67.835, 4.590

Protanopia

55, 17.874, 285.480

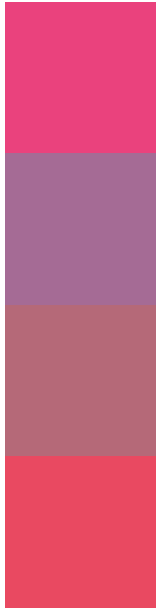
Deuteranopia

55, 11.273, 50.546



Tritanopia
55, 67.690, 27.849

Trichromacy



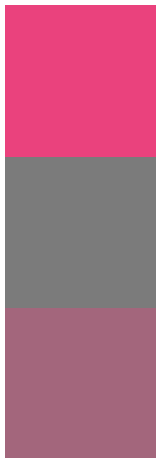
Original Color
55, 67.835, 4.590

Protanomaly
53, 32.567, 335.788

Deuteranomaly
53, 32.540, 8.688

Tritanomaly
55, 66.480, 19.474

Monochromacy



Original Color
55, 67.835, 4.590

Achromatopsia
52, 0.007, 296.813

Achromatomaly
50, 27.707, 356.047

CSS Examples

Text

The CSS property to change the color of the text to CIELCh 55, 67.835, 4.590 is called "color". The color property can be set on classes, ids or directly on the HTML element.

This example shows how text in the color `rgb(234, 66, 125)` looks like.

```
.text, #text, p{  
    color:rgb(234, 66, 125)  
}
```

If you want to add a text shadow in that color use the text-shadow property, you can generate a text shadow directly with our [CSS Text Shadow Generator](#).

Here you see how black text with a 4 pixel rgb(234, 66, 125) colored shadow looks like.

```
.shadow{ text-shadow: 4px 4px 2px rgb(234, 66, 125) }
```

Border

The CSS property to change the border of an element to CIELCh 55, 67.835, 4.590 is called "border". The border property can be set on classes, ids or directly on the HTML element.

This example shows the color as border, it can be applied via the CSS property "border" or "border-color".

```
.border, #border, table{ border:4px solid rgb(234, 66, 125) }
```

If only the border color should be changed use the property `border-color`.

```
.border{ border-color:rgb(234, 66, 125) }
```

If you want to add a box shadow in that color use:

Here you see how a box with a 4 pixel `rgb(234, 66, 125)` colored shadow looks like.

```
.boxshadow{ -moz-box-shadow:4px 4px 4px  
4px rgb(234, 66, 125); -webkit-box-  
shadow:4px 4px 4px 4px rgb(234, 66, 125);  
box-shadow:4px 4px 4px 4px rgb(234, 66,  
125) }
```

Background

The CSS property to change the background color of an element to CIELCh 55, 67.835, 4.590 is called "background". The background property can be set on classes, ids or directly on the HTML element.

```
.background, #background, body{  
background: rgb(234, 66, 125) }
```

If only the background color should be changed can be used:

```
.background{ background-color: rgb(234, 66,  
125) }
```

This example shows the color as background, it is applied via the CSS property "background".

To optimize and compress your CSS code, you can use our [online CSS compressor and optimizer](#) based on csstidy. If you want to create a linear or radial gradient as background or border, check our [CSS Gradient Generator](#).

Hey! You found this booklet interesting? Support Converting Colors with the new Membership Option!

The pro membership hides all ads, plus gives you double the colors in the color bucket, and more awesome pro features!

[Learn more, Memberships starting at \\$2.50/m!](#)

**Follow me
on Twitter!**

@ConvertingColor