

Converting Colors

CIELCh(55, 72.325, 3.300)

Have a look what the booklet for
CIELCh(55, 72.325, 3.300) contains.

| | |
|--|----|
| CIELCh(55, 72.362, 3.601) | 3 |
| <i>Conversions</i> | 4 |
| <i>Details</i> | 6 |
| <i>Harmonies</i> | 11 |
| <i>Previews</i> | 20 |
| <i>Color Blindness Simulation</i> | 23 |
| <i>CSS Examples</i> | 26 |

Color

CIELCh(55, 72.362, 3.601)

Conversions

Conversions Part 1

| Format | Color |
|---------------|----------------------------|
| Hex | F0397F |
| RGB | 240, 57, 127 |
| RGB Percent | 94%, 22%, 50% |
| CMY | 0.0595, 0.7772, 0.5025 |
| CMYK | 0.00, 0.76, 0.47, 0.06 |
| HSL | 337°, 86%, 58% |
| HSV | 337°, 76%, 94% |
| XYZ | 41.1507, 22.9298, 22.2878 |
| YIQ | 119.6970, 86.5980, 60.5660 |

Conversions

Conversions Part 2

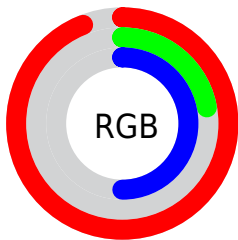
| Format | Color |
|-------------------------------------|-------------------------------|
| R_{YB} | 240, 57, 127 |
| Decimal | 15743359 |
| CIE _{Lab} | 55.00, 72.22, 4.54 |
| CIE _{LCh} | 55, 72.362, 3.601 |
| Yxy | 22.9298, 0.4765, 0.2655 |
| Android (android.graphics.Color) | 4293933439 (0xFFFF0397F) |
| YUV | 119.6970, 3.6004, 105.5057 |
| Hunter-Lab | 47.8851, 69.5975, 5.9234 |

Details

The CIELCh color **55, 72.362, 3.601** is a dark color, and the websafe version is hex **CC0066**. The color can be described as middle washed rose. A complement of this color would be **85, 64.164, 160.593**, and the grayscale version is **50, 0.007, 296.813**.

A 20% lighter version of the original color is **68, 57.760, 353.667**, and **38, 64.479, 7.809** is the 20% darker color. If you saturate the color by 10%, you get **53, 77.312, 7.521**, and if you desaturate by 10%, it is **58, 65.478, 0.518**.

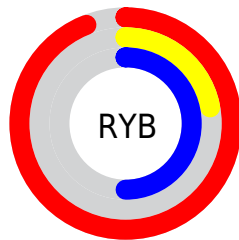
Distribution



Red (94%)

Green (22%)

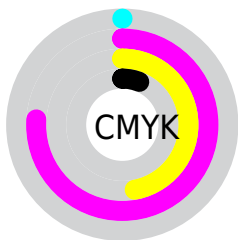
Blue (50%)



Red (94%)

Yellow (22%)

Blue (50%)

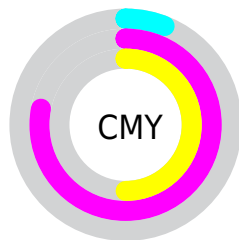


Cyan (0%)

Magenta (76%)

Yellow (47%)

Black (6%)



Cyan (6%)

Magenta (78%)

Yellow (50%)

Brightness & Saturation Gradients

These gradients show how the CIELCh color 55, 72.362, 3.601 changes by changing the brightness by 10 percent. The first figure shows a shift by +10% for each color and the second figure -10%.

Similar to the brightness gradients but the following saturation gradients show a change of the CIELCh color 55, 72.362, 3.601 by changing the saturation by 10% instead.

 55, 72.362, 3.601  55, 72.362, 3.601

 100, 72.362, 3.601  45, 72.362, 3.601

 75, 72.362, 3.601  35, 72.362, 3.601


 85, 72.362, 3.601  25, 72.362, 3.601

 95, 72.362, 3.601  15, 72.362, 3.601

 5, 72.362, 3.601

 0, 72.362, 3.601

 55, 72.362, 3.601  55, 72.362, 3.601

 53, 77.312, 7.521  58, 65.478, 0.518

 51, 80.458, 12.389  62, 56.984,

51, 81.452, 14.319

358.085

67, 47.376,
356.135

73, 37.154,
354.536

78, 26.720,
353.192

85, 16.352,
352.032

91, 6.226, 350.980

97, 3.562, 170.319

99, 5.222, 199.201

Harmonies

Complementary

The Complementary color scheme is a pair of colors which are on the opposite of each other on the color wheel.



55, 72.362, 3.601



85, 64.164, 160.593

Rectangle

The Rectangle color scheme consists of four colors that form a rectangle on the color wheel.



55, 72.362, 3.601



55, 72.362, 53.601



55, 72.362, 183.601



55, 72.362, 233.601

Sweetspot

The Sweet Spot groups the original color and five complimentary colors.



55, 72.358, 3.603



85, 24.459, 352.800



49, 101.927, 315.769



43, 16.998, 353.241



0, 0.000, 0.000



53, 0.007, 296.813

Same Dimension

The Same Dimension uses a secret algorithm to generate beautiful new colors.



55, 72.358, 3.603



55, 83.156, 10.325



56, 76.694, 37.559



47, 5.633, 351.311



39, 66.494, 13.313



8, 28.798, 4.750

Inverse Universe

The Inverse Universe completely reimagines the original color for something new.



55, 72.358, 3.603



55, 83.156, 10.325



80, 39.995, 213.645



47, 5.633, 351.311



39, 66.494, 13.313



8, 28.798, 4.750

Previews

White Background



This preview shows how the CIELCh color 55, 72.362, 3.601 looks on a white background.

Color Contrast Check

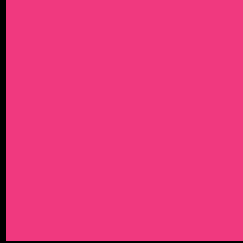
Large Text (above 18pt) WCAG AA ✓ Pass

Any Text WCAG AA ✗ Fail

Large Text (above 18pt) WCAG AAA ✗ Fail

Any Text WCAG AAA ✗ Fail

Black Background



This preview shows how the CIELCh color 55, 72.362, 3.601 looks on a black background.

Color Contrast Check

Large Text (above 18pt) WCAG AA ✓ Pass

Any Text WCAG AA ✓ Pass

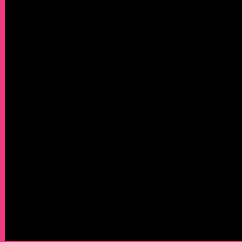
Large Text (above 18pt) WCAG AAA ✓ Pass

Any Text WCAG AAA × Fail

If you want to check with other color combinations, try the [Color Contrast Checker](#).

CIELCh 55, 72.362, 3.601

Background



This preview shows how black text looks on a background with the CIELCh color 55, 72.362, 3.601.

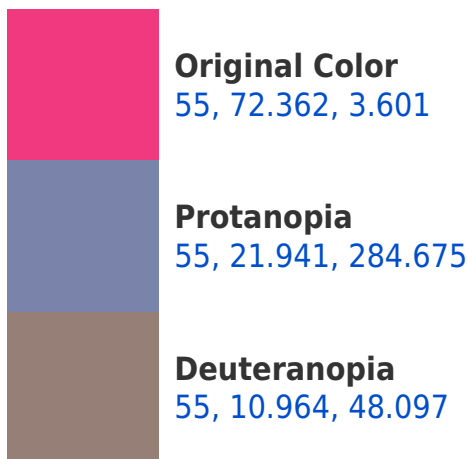


This preview shows how white text looks on a background with the CIELCh color 55, 72.362, 3.601.

Color Blindness Simulation

Color vision deficiency is a very complex topic, and I could not describe the different causes any better than Wikipedia does, so if you want to learn more, you should check out their [article about color blindness](#).

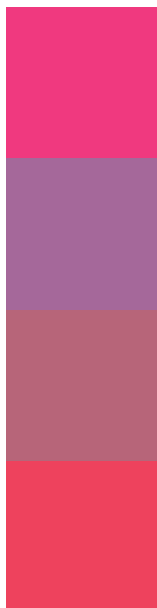
Dichromacy





Tritanopia
55, 72.712, 29.467

Trichromacy



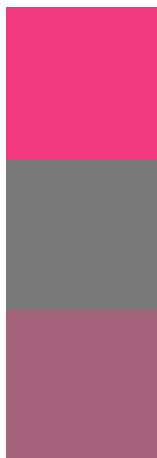
Original Color
55, 72.362, 3.601

Protanomaly
52, 36.513, 332.157

Deuteranomaly
53, 35.374, 5.723

Tritanomaly
55, 70.788, 20.308

Monochromacy



Original Color
55, 72.362, 3.601

Achromatopsia
50, 0.007, 296.813

Achromatomaly
49, 30.594, 355.716

CSS Examples

Text

The CSS property to change the color of the text to CIELCh 55, 72.362, 3.601 is called "color". The color property can be set on classes, ids or directly on the HTML element.

This example shows how text in the color `rgb(240, 57, 127)` looks like.

```
.text, #text, p{  
    color:rgb(240, 57, 127)  
}
```

If you want to add a text shadow in that color use the text-shadow property, you can generate a text shadow directly with our [CSS Text Shadow Generator](#).

Here you see how black text with a 4 pixel rgb(240, 57, 127) colored shadow looks like.

```
.shadow{ text-shadow: 4px 4px 2px rgb(240, 57, 127) }
```

Border

The CSS property to change the border of an element to CIELCh 55, 72.362, 3.601 is called "border". The border property can be set on classes, ids or directly on the HTML element.

This example shows the color as border, it can be applied via the CSS property "border" or "border-color".

```
.border, #border, table{ border:4px solid rgb(240, 57, 127) }
```

If only the border color should be changed use the property `border-color`.

```
.border{ border-color:rgb(240, 57, 127) }
```

If you want to add a box shadow in that color use:

Here you see how a box with a 4 pixel `rgb(240, 57, 127)` colored shadow looks like.

```
.boxshadow{ -moz-box-shadow:4px 4px 4px  
4px rgb(240, 57, 127); -webkit-box-  
shadow:4px 4px 4px 4px rgb(240, 57, 127);  
box-shadow:4px 4px 4px 4px rgb(240, 57,  
127) }
```

Background

The CSS property to change the background color of an element to CIELCh 55, 72.362, 3.601 is called "background". The background property can be set on classes, ids or directly on the HTML element.

```
.background, #background, body{  
background: rgb(240, 57, 127) }
```

If only the background color should be changed can be used:

```
.background{ background-color: rgb(240, 57,  
127) }
```

This example shows the color as background, it is applied via the CSS property "background".

To optimize and compress your CSS code, you can use our [online CSS compressor and optimizer](#) based on csstidy. If you want to create a linear or radial gradient as background or border, check our [CSS Gradient Generator](#).

Hey! You found this booklet interesting? Support Converting Colors with the new Membership Option!

The pro membership hides all ads, plus gives you double the colors in the color bucket, and more awesome pro features!

[Learn more, Memberships starting at \\$2.50/m!](#)

**Follow me
on Twitter!**

@ConvertingColor