

Converting Colors

CIELCh(55, 73.124, 14.885)

Have a look what the booklet for
CIELCh(55, 73.124, 14.885) contains.

CIELCh(55, 73.124, 14.885)	3
<i>Conversions</i>	4
<i>Details</i>	6
<i>Harmonies</i>	11
<i>Previews</i>	20
<i>Color Blindness Simulation</i>	23
<i>CSS Examples</i>	26

Color

CIELCh(55, 73.124, 14.885)

Conversions

Conversions Part 1

Format	Color
Hex	F23A67
RGB	242, 58, 103
RGB Percent	95%, 23%, 40%
CMY	0.0504, 0.7718, 0.5956
CMYK	0.00, 0.76, 0.57, 0.05
HSL	345°, 88%, 59%
HSV	345°, 76%, 95%
XYZ	40.6473, 22.9298, 15.1469
YIQ	118.1460, 95.2190, 53.0030

Conversions

Conversions Part 2

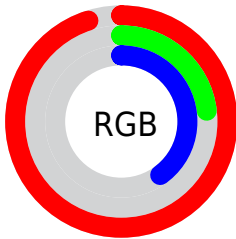
Format	Color
R_{YB}	242, 58, 103
Decimal	15874663
CIE Lab	55.00, 70.67, 18.78
CIE LCh	55, 73.124, 14.885
Yxy	22.9298, 0.5163, 0.2913
Android (android.graphics.Color)	4294064743 (0xFFFF23A67)
YUV	118.1460, -7.4670, 108.6200
Hunter-Lab	47.8851, 67.7208, 14.7651

Details

The CIELCh color **55, 73.124, 14.885** is a dark color, and the websafe version is hex **FF3366**. The color can be described as middle washed rose. A complement of this color would be **86, 55.783, 170.813**, and the grayscale version is **50, 0.007, 296.813**.

A 20% lighter version of the original color is **67, 54.957, 7.069**, and **38, 66.629, 19.285** is the 20% darker color. If you saturate the color by 10%, you get **53, 79.925, 19.429**, and if you desaturate by 10%, it is **58, 64.948, 11.237**.

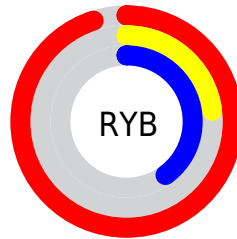
Distribution



Red (95%)

Green (23%)

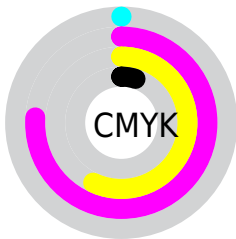
Blue (40%)



Red (95%)

Yellow (23%)

Blue (40%)

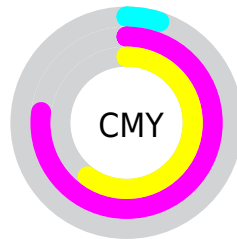


Cyan (0%)

Magenta (76%)

Yellow (57%)

Black (5%)



Cyan (5%)

Magenta (77%)

Yellow (60%)


Brightness & Saturation Gradients

These gradients show how the CIELCh color 55, 73.124, 14.885 changes by changing the brightness by 10 percent. The first figure shows a shift by +10% for each color and the second figure -10%.

Similar to the brightness gradients but the following saturation gradients show a change of the CIELCh color 55, 73.124, 14.885 by changing the saturation by 10% instead.

 55, 73.124, 14.885

 55, 73.124, 14.885

 100, 73.124,
14.885

 45, 73.124, 14.885

 75, 73.124, 14.885

 35, 73.124, 14.885

 85, 73.124, 14.885

 25, 73.124, 14.885

 95, 73.124, 14.885

 15, 73.124, 14.885

 5, 73.124, 14.885

 0, 73.124, 14.885

 55, 73.124, 14.885

 55, 73.124, 14.885

 53, 79.925, 19.429

 58, 64.948, 11.237

 51, 85.474, 24.797

 63, 55.646, 8.358

51, 87.593, 27.003

68, 45.634, 6.082

73, 35.336, 4.258

79, 25.085, 2.765

85, 15.103, 1.512

92, 5.516, 0.395

98, 3.619, 179.749

99, 4.429, 199.274

Harmonies

Complementary

The Complementary color scheme is a pair of colors which are on the opposite of each other on the color wheel.



55, 73.124, 14.885



86, 55.783, 170.813

Rectangle

The Rectangle color scheme consists of four colors that form a rectangle on the color wheel.



55, 73.124, 14.885



55, 73.124, 64.885



55, 73.124, 194.885



55, 73.124, 244.885

Sweetspot

The Sweet Spot groups the original color and five complimentary colors.



55, 73.120, 14.887



85, 23.031, 2.380



53, 101.669, 319.783



43, 16.055, 2.863



0, 0.000, 0.000



53, 0.007, 296.813

Same Dimension

The Same Dimension uses a secret algorithm to generate beautiful new colors.



55, 73.120, 14.887



54, 86.301, 22.177



61, 71.749, 45.211



47, 5.249, 0.783



38, 70.603, 25.923



8, 28.884, 13.423

Inverse Universe

The Inverse Universe completely reimagines the original color for something new.



55, 73.120, 14.887



54, 86.301, 22.177



74, 39.478, 237.132



47, 5.249, 0.783



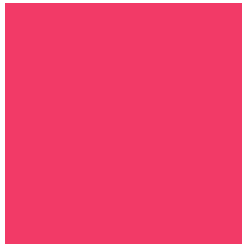
38, 70.603, 25.923



8, 28.884, 13.423

Previews

White Background



This preview shows how the CIELCh color 55, 73.124, 14.885 looks on a white background.

Color Contrast Check

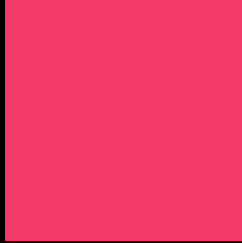
Large Text (above 18pt) WCAG AA ✓ Pass

Any Text WCAG AA ✗ Fail

Large Text (above 18pt) WCAG AAA ✗ Fail

Any Text WCAG AAA ✗ Fail

Black Background



This preview shows how the CIELCh color 55, 73.124, 14.885 looks on a black background.

Color Contrast Check

Large Text (above 18pt) WCAG AA ✓ Pass

Any Text WCAG AA ✓ Pass

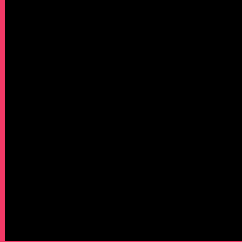
Large Text (above 18pt) WCAG AAA ✓ Pass

Any Text WCAG AAA × Fail

If you want to check with other color combinations, try the [Color Contrast Checker](#).

CIELCh 55, 73.124, 14.885

Background



This preview shows how black text looks on a background with the CIELCh color 55, 73.124, 14.885.

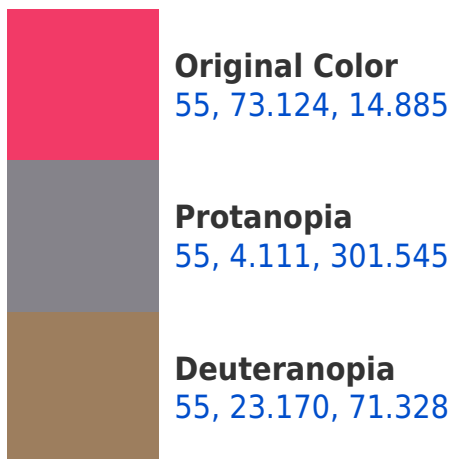


This preview shows how white text looks on a background with the CIELCh color 55, 73.124, 14.885.

Color Blindness Simulation

Color vision deficiency is a very complex topic, and I could not describe the different causes any better than Wikipedia does, so if you want to learn more, you should check out their [article about color blindness](#).

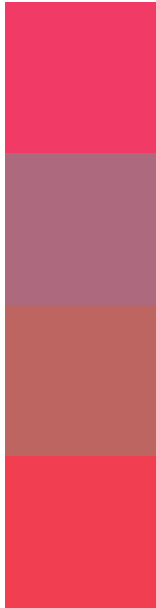
Dichromacy





Tritanopia
55, 76.584, 30.445

Trichromacy



Original Color
55, 73.124, 14.885

Protanomaly
52, 29.860, 1.030

Deuteranomaly
53, 38.766, 27.585

Tritanomaly
55, 74.637, 25.136

Monochromacy



Original Color
55, 73.124, 14.885

Achromatopsia
50, 0.007, 296.813

Achromatomaly
49, 29.475, 4.251

CSS Examples

Text

The CSS property to change the color of the text to CIELCh 55, 73.124, 14.885 is called "color". The color property can be set on classes, ids or directly on the HTML element.

This example shows how text in the color `rgb(242, 58, 103)` looks like.

```
.text, #text, p{  
    color:rgb(242, 58, 103)  
}
```

If you want to add a text shadow in that color use the text-shadow property, you can generate a text shadow directly with our [CSS Text Shadow Generator](#).

Here you see how black text with a 4 pixel rgb(242, 58, 103) colored shadow looks like.

```
.shadow{ text-shadow: 4px 4px 2px rgb(242, 58, 103) }
```

Border

The CSS property to change the border of an element to CIELCh 55, 73.124, 14.885 is called "border". The border property can be set on classes, ids or directly on the HTML element.

This example shows the color as border, it can be applied via the CSS property "border" or "border-color".

```
.border, #border, table{ border:4px solid rgb(242, 58, 103) }
```

If only the border color should be changed use the property `border-color`.

```
.border{ border-color:rgb(242, 58, 103) }
```

If you want to add a box shadow in that color use:

Here you see how a box with a 4 pixel `rgb(242, 58, 103)` colored shadow looks like.

```
.boxshadow{ -moz-box-shadow:4px 4px 4px  
4px rgb(242, 58, 103); -webkit-box-  
shadow:4px 4px 4px 4px rgb(242, 58, 103);  
box-shadow:4px 4px 4px 4px rgb(242, 58,  
103) }
```

Background

The CSS property to change the background color of an element to CIELCh 55, 73.124, 14.885 is called "background". The background property can be set on classes, ids or directly on the HTML element.

```
.background, #background, body{  
background: rgb(242, 58, 103) }
```

If only the background color should be changed can be used:

```
.background{ background-color: rgb(242, 58,  
103) }
```

This example shows the color as background, it is applied via the CSS property "background".

To optimize and compress your CSS code, you can use our [online CSS compressor and optimizer](#) based on csstidy. If you want to create a linear or radial gradient as background or border, check our [CSS Gradient Generator](#).

Hey! You found this booklet interesting? Support Converting Colors with the new Membership Option!

The pro membership hides all ads, plus gives you double the colors in the color bucket, and more awesome pro features!

[Learn more, Memberships starting at \\$2.50/m!](#)

**Follow me
on Twitter!**

@ConvertingColor