

Converting Colors

CIELCh(55, 83.227, 10.215)

Have a look what the booklet for
CIELCh(55, 83.227, 10.215) contains.

CIELCh(55, 83.163, 9.987)	3
<i>Conversions</i>	4
<i>Details</i>	6
<i>Harmonies</i>	11
<i>Previews</i>	20
<i>Color Blindness Simulation</i>	23
<i>CSS Examples</i>	26

Color

CIELCh(55, 83.163, 9.987)

Conversions

Conversions Part 1

Format	Color
Hex	FF146F
RGB	255, 20, 111
RGB Percent	100%, 8%, 44%
CMY	0.0000, 0.9207, 0.5645
CMYK	0.00, 0.92, 0.56, 0.00
HSL	337°, 100%, 54%
HSV	337°, 92%, 100%
XYZ	44.3929, 22.9298, 17.1410
YIQ	100.6390, 110.8490, 78.1210

Conversions

Conversions Part 2

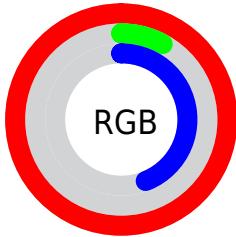
Format	Color
R_{YB}	255, 20, 111
Decimal	16716911
CIE _{Lab}	55.00, 81.90, 14.42
CIE _{LCh}	55, 83.163, 9.987
Yxy	22.9298, 0.5256, 0.2715
Android (android.graphics.Color)	4294906991 (0xFFFF146F)
YUV	100.6390, 5.1080, 135.3746
Hunter-Lab	47.8851, 81.6831, 12.2961

Details

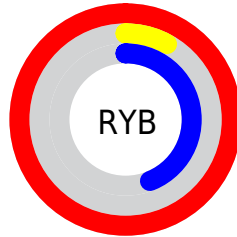
The CIELCh color **55, 83.163, 9.987** is a dark color, and the websafe version is hex **FF0066**. The color can be described as dark washed rose. A complement of this color would be **89, 75.890, 156.946**, and the grayscale version is **43, 0.006, 296.813**.

A 20% lighter version of the original color is **65, 63.062, 358.477**, and **40, 69.539, 18.024** is the 20% darker color. If you saturate the color by 10%, you get **54, 85.276, 14.113**, and if you desaturate by 10%, it is **57, 79.189, 5.502**.

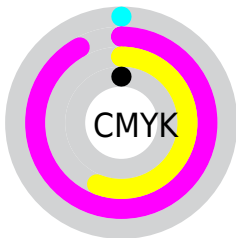
Distribution



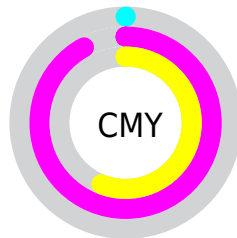
- Red (100%)
- Green (8%)
- Blue (44%)



- Red (100%)
- Yellow (8%)
- Blue (44%)



- Cyan (0%)
- Magenta (92%)
- Yellow (56%)
- Black (0%)



- Cyan (0%)
- Magenta (92%)
- Yellow (56%)

Brightness & Saturation Gradients

These gradients show how the CIELCh color 55, 83.163, 9.987 changes by changing the brightness by 10 percent. The first figure shows a shift by +10% for each color and the second figure -10%.

Similar to the brightness gradients but the following saturation gradients show a change of the CIELCh color 55, 83.163, 9.987 by changing the saturation by 10% instead.

 55, 83.163, 9.987  55, 83.163, 9.987

 100, 83.163, 9.987  45, 83.163, 9.987

 75, 83.163, 9.987  35, 83.163, 9.987

 85, 83.163, 9.987  25, 83.163, 9.987

 95, 83.163, 9.987  15, 83.163, 9.987

 5, 83.163, 9.987

 0, 83.163, 9.987

 55, 83.163, 9.987  55, 83.163, 9.987

 54, 85.276, 14.113  57, 79.189, 5.502

 60, 73.195, 1.951

64, 65.246,
359.162

68, 55.785,
356.951

74, 45.363,
355.163

79, 34.473,
353.682

86, 23.490,
352.424

92, 12.662,
351.323

99, 2.137, 350.163

Harmonies

Complementary

The Complementary color scheme is a pair of colors which are on the opposite of each other on the color wheel.



55, 83.163, 9.987



89, 75.890, 156.946

Rectangle

The Rectangle color scheme consists of four colors that form a rectangle on the color wheel.



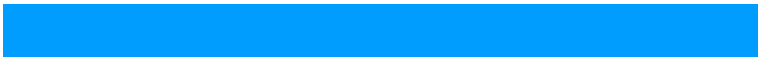
55, 83.163, 9.987



55, 83.163, 59.987



55, 83.163, 189.987



55, 83.163, 239.987

Sweetspot

The Sweet Spot groups the original color and five complimentary colors.



55, 83.139, 9.976



82, 30.001, 353.147



46, 119.247, 314.771



41, 20.784, 353.716



0, 0.000, 0.000



53, 0.007, 296.813

Same Dimension

The Same Dimension uses a secret algorithm to generate beautiful new colors.



55, 83.139, 9.976



54, 85.276, 14.113



55, 97.819, 40.061



50, 5.941, 351.056



41, 68.508, 13.083



10, 31.285, 5.909

Inverse Universe

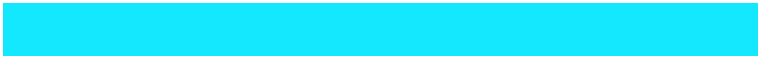
The Inverse Universe completely reimagines the original color for something new.



55, 83.139, 9.976



54, 85.276, 14.113



84, 44.373, 213.177



50, 5.941, 351.056



41, 68.508, 13.083



10, 31.285, 5.909

Previews

White Background



This preview shows how the CIELCh color 55, 83.163, 9.987 looks on a white background.

Color Contrast Check

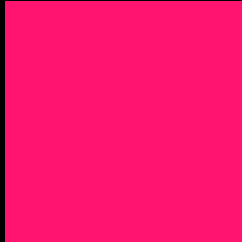
Large Text (above 18pt) WCAG AA ✓ Pass

Any Text WCAG AA ✗ Fail

Large Text (above 18pt) WCAG AAA ✗ Fail

Any Text WCAG AAA ✗ Fail

Black Background



This preview shows how the CIELCh color 55, 83.163, 9.987 looks on a black background.

Color Contrast Check

Large Text (above 18pt) WCAG AA ✓ Pass

Any Text WCAG AA ✓ Pass

Large Text (above 18pt) WCAG AAA ✓ Pass

Any Text WCAG AAA × Fail

If you want to check with other color combinations, try the [Color Contrast Checker](#).

CIELCh 55, 83.163, 9.987

Background



This preview shows how black text looks on a background with the CIELCh color 55, 83.163, 9.987.



This preview shows how white text looks on a background with the CIELCh color 55, 83.163, 9.987.

Color Blindness Simulation

Color vision deficiency is a very complex topic, and I could not describe the different causes any better than Wikipedia does, so if you want to learn more, you should check out their [article about color blindness](#).

Dichromacy



Original Color

55, 83.163, 9.987

Protanopia

55, 16.707, 286.034

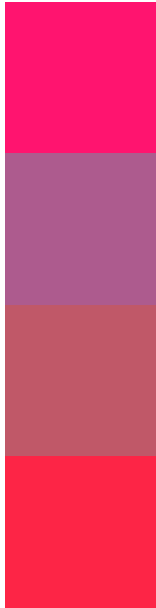
Deuteranopia

55, 20.210, 69.194



Tritanopia
55, 90.077, 35.014

Trichromacy



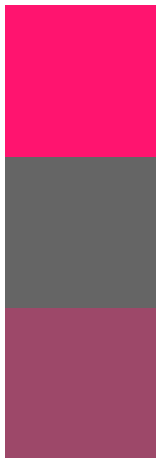
Original Color
55, 83.163, 9.987

Protanomaly
50, 42.141, 341.693

Deuteranomaly
51, 44.679, 14.631

Tritanomaly
55, 85.930, 26.514

Monochromacy



Original Color
55, 83.163, 9.987

Achromatopsia
43, 0.006, 296.813

Achromatomaly
42, 39.101, 356.928

CSS Examples

Text

The CSS property to change the color of the text to CIELCh 55, 83.163, 9.987 is called "color". The color property can be set on classes, ids or directly on the HTML element.

This example shows how text in the color `rgb(255, 20, 111)` looks like.

```
.text, #text, p{  
    color:rgb(255, 20, 111)  
}
```

If you want to add a text shadow in that color use the text-shadow property, you can generate a text shadow directly with our [CSS Text Shadow Generator](#).

Here you see how black text with a 4 pixel rgb(255, 20, 111) colored shadow looks like.

```
.shadow{ text-shadow: 4px 4px 2px rgb(255, 20, 111) }
```

Border

The CSS property to change the border of an element to CIELCh 55, 83.163, 9.987 is called "border". The border property can be set on classes, ids or directly on the HTML element.

This example shows the color as border, it can be applied via the CSS property "border" or "border-color".

```
.border, #border, table{ border:4px solid rgb(255, 20, 111) }
```

If only the border color should be changed use the property `border-color`.

```
.border{ border-color:rgb(255, 20, 111) }
```

If you want to add a box shadow in that color use:

Here you see how a box with a 4 pixel `rgb(255, 20, 111)` colored shadow looks like.

```
.boxshadow{ -moz-box-shadow:4px 4px 4px  
4px rgb(255, 20, 111); -webkit-box-  
shadow:4px 4px 4px 4px rgb(255, 20, 111);  
box-shadow:4px 4px 4px 4px rgb(255, 20,  
111) }
```

Background

The CSS property to change the background color of an element to CIELCh 55, 83.163, 9.987 is called "background". The background property can be set on classes, ids or directly on the HTML element.

```
.background, #background, body{  
background: rgb(255, 20, 111) }
```

If only the background color should be changed can be used:

```
.background{ background-color: rgb(255, 20,  
111) }
```

This example shows the color as background, it is applied via the CSS property "background".

To optimize and compress your CSS code, you can use our [online CSS compressor and optimizer](#) based on csstidy. If you want to create a linear or radial gradient as background or border, check our [CSS Gradient Generator](#).

Hey! You found this booklet interesting? Support Converting Colors with the new Membership Option!

The pro membership hides all ads, plus gives you double the colors in the color bucket, and more awesome pro features!

[Learn more, Memberships starting at \\$2.50/m!](#)

**Follow me
on Twitter!**

@ConvertingColor