

Converting Colors

CIELCh(55, 83.285, 14.552)

Have a look what the booklet for
CIELCh(55, 83.285, 14.552) contains.

CIELCh(55, 83.245, 14.648)	3
<i>Conversions</i>	4
<i>Details</i>	6
<i>Harmonies</i>	11
<i>Previews</i>	20
<i>Color Blindness Simulation</i>	23
<i>CSS Examples</i>	26

Color

CIELCh(55, 83.245, 14.648)

Conversions

Conversions Part 1

Format	Color
Hex	FF1A64
RGB	255, 26, 100
RGB Percent	100%, 10%, 39%
CMY	0.0000, 0.8976, 0.6077
CMYK	0.00, 0.90, 0.61, 0.00
HSL	341°, 100%, 55%
HSV	341°, 90%, 100%
XYZ	43.9264, 22.9298, 14.1744
YIQ	102.9070, 112.7300, 71.5620

Conversions

Conversions Part 2

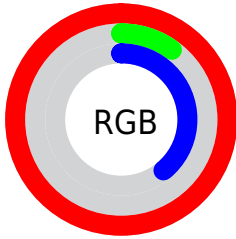
Format	Color
R_{YB}	255, 26, 100
Decimal	16718436
CIE _{Lab}	55.00, 80.54, 21.05
CIE _{LCh}	55, 83.245, 14.648
Yxy	22.9298, 0.5421, 0.2830
Android (android.graphics.Color)	4294908516 (0xFFFF1A64)
YUV	102.9070, -1.4332, 133.3856
Hunter-Lab	47.8851, 79.9443, 15.9692

Details

The CIELCh color **55, 83.245, 14.648** is a dark color, and the websafe version is hex **FF0066**. The color can be described as dark washed rose. A complement of this color would be **89, 69.534, 161.878**, and the grayscale version is **44, 0.006, 296.813**.

A 20% lighter version of the original color is **65, 61.143, 4.870**, and **40, 70.889, 22.647** is the 20% darker color. If you saturate the color by 10%, you get **54, 87.201, 20.115**, and if you desaturate by 10%, it is **57, 77.967, 9.997**.

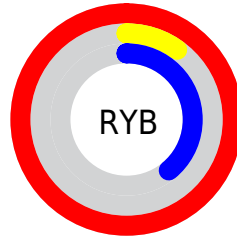
Distribution



Red (100%)

Green (10%)

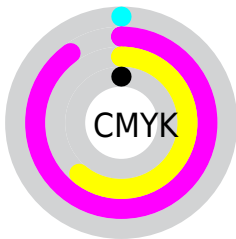
Blue (39%)



Red (100%)

Yellow (10%)

Blue (39%)

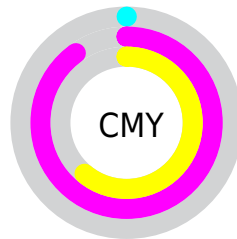


Cyan (0%)

Magenta (90%)

Yellow (61%)

Black (0%)



Cyan (0%)

Magenta (90%)

Yellow (61%)

Brightness & Saturation Gradients

These gradients show how the CIELCh color 55, 83.245, 14.648 changes by changing the brightness by 10 percent. The first figure shows a shift by +10% for each color and the second figure -10%.

Similar to the brightness gradients but the following saturation gradients show a change of the CIELCh color 55, 83.245, 14.648 by changing the saturation by 10% instead.

 55, 83.245, 14.648

 55, 83.245, 14.648

 100, 83.245,
14.648

 45, 83.245, 14.648

 75, 83.245, 14.648

 35, 83.245, 14.648

 85, 83.245, 14.648

 25, 83.245, 14.648

 95, 83.245, 14.648

 15, 83.245, 14.648

 5, 83.245, 14.648

 0, 83.245, 14.648

 55, 83.245, 14.648

 55, 83.245, 14.648

 54, 87.201, 20.115

 57, 77.967, 9.997

 54, 87.298, 20.246

 60, 70.924, 6.287

64, 62.247, 3.369

69, 52.378, 1.062

75, 41.826,
359.206

81, 31.030,
357.679

87, 20.304,
356.392

93, 9.847, 355.268

100, 0.012,
296.813

Harmonies

Complementary

The Complementary color scheme is a pair of colors which are on the opposite of each other on the color wheel.



55, 83.245, 14.648



89, 69.534, 161.878

Rectangle

The Rectangle color scheme consists of four colors that form a rectangle on the color wheel.



55, 83.245, 14.648



55, 83.245, 64.648



55, 83.245, 194.648



55, 83.245, 244.648

Sweetspot

The Sweet Spot groups the original color and five complimentary colors.



55, 83.230, 14.644



82, 28.051, 357.303



49, 116.783, 316.822



42, 18.984, 357.771



0, 0.000, 0.000



53, 0.007, 296.813

Same Dimension

The Same Dimension uses a secret algorithm to generate beautiful new colors.



55, 83.230, 14.644



54, 87.298, 20.246



57, 93.333, 41.830



50, 5.733, 355.240



40, 69.952, 19.161



10, 31.377, 11.091

Inverse Universe

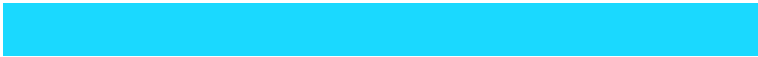
The Inverse Universe completely reimagines the original color for something new.



55, 83.230, 14.644



54, 87.298, 20.246



80, 42.908, 225.725



50, 5.733, 355.240



40, 69.952, 19.161



10, 31.377, 11.091

Previews

White Background



This preview shows how the CIELCh color 55, 83.245, 14.648 looks on a white background.

Color Contrast Check

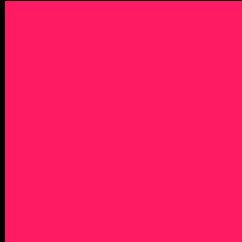
Large Text (above 18pt) WCAG AA ✓ Pass

Any Text WCAG AA ✗ Fail

Large Text (above 18pt) WCAG AAA ✗ Fail

Any Text WCAG AAA ✗ Fail

Black Background



This preview shows how the CIELCh color 55, 83.245, 14.648 looks on a black background.

Color Contrast Check

Large Text (above 18pt) WCAG AA ✓ Pass

Any Text WCAG AA ✓ Pass

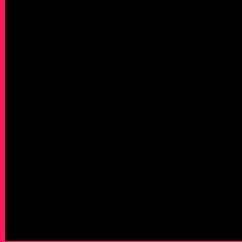
Large Text (above 18pt) WCAG AAA ✓ Pass

Any Text WCAG AAA × Fail

If you want to check with other color combinations, try the [Color Contrast Checker](#).

CIELCh 55, 83.245, 14.648

Background



This preview shows how black text looks on a background with the CIELCh color 55, 83.245, 14.648.



This preview shows how white text looks on a background with the CIELCh color 55, 83.245, 14.648.

Color Blindness Simulation

Color vision deficiency is a very complex topic, and I could not describe the different causes any better than Wikipedia does, so if you want to learn more, you should check out their [article about color blindness](#).

Dichromacy



Original Color

55, 83.245, 14.648

Protanopia

55, 7.472, 291.082

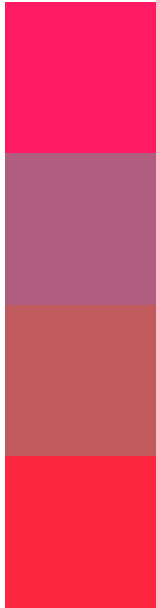
Deuteranopia

55, 25.852, 73.690



Tritanopia
55, 91.112, 35.444

Trichromacy



Original Color
55, 83.245, 14.648

Protanomaly
50, 38.129, 353.493

Deuteranomaly
51, 45.387, 23.727

Tritanomaly
55, 87.372, 28.821

Monochromacy



Original Color
55, 83.245, 14.648

Achromatopsia
44, 0.006, 296.813

Achromatomaly
43, 37.466, 1.127

CSS Examples

Text

The CSS property to change the color of the text to CIELCh 55, 83.245, 14.648 is called "color". The color property can be set on classes, ids or directly on the HTML element.

This example shows how text in the color `rgb(255, 26, 100)` looks like.

```
.text, #text, p{  
    color:rgb(255, 26, 100)  
}
```

If you want to add a text shadow in that color use the text-shadow property, you can generate a text shadow directly with our [CSS Text Shadow Generator](#).

Here you see how black text with a 4 pixel rgb(255, 26, 100) colored shadow looks like.

```
.shadow{ text-shadow: 4px 4px 2px rgb(255, 26, 100) }
```

Border

The CSS property to change the border of an element to CIELCh 55, 83.245, 14.648 is called "border". The border property can be set on classes, ids or directly on the HTML element.

This example shows the color as border, it can be applied via the CSS property "border" or "border-color".

```
.border, #border, table{ border:4px solid rgb(255, 26, 100) }
```

If only the border color should be changed use the property border-color.

```
.border{ border-color:rgb(255, 26, 100) }
```

If you want to add a box shadow in that color use:

Here you see how a box with a 4 pixel rgb(255, 26, 100) colored shadow looks like.

```
.boxshadow{ -moz-box-shadow:4px 4px 4px  
4px rgb(255, 26, 100); -webkit-box-  
shadow:4px 4px 4px 4px rgb(255, 26, 100);  
box-shadow:4px 4px 4px 4px rgb(255, 26,  
100) }
```

Background

The CSS property to change the background color of an element to CIELCh 55, 83.245, 14.648 is called "background". The background property can be set on classes, ids or directly on the HTML element.

```
.background, #background, body{  
background: rgb(255, 26, 100) }
```

If only the background color should be changed can be used:

```
.background{ background-color: rgb(255, 26,  
100) }
```

This example shows the color as background, it is applied via the CSS property "background".

To optimize and compress your CSS code, you can use our [online CSS compressor and optimizer](#) based on csstidy. If you want to create a linear or radial gradient as background or border, check our [CSS Gradient Generator](#).

Hey! You found this booklet interesting? Support Converting Colors with the new Membership Option!

The pro membership hides all ads, plus gives you double the colors in the color bucket, and more awesome pro features!

[Learn more, Memberships starting at \\$2.50/m!](#)

**Follow me
on Twitter!**

@ConvertingColor