

# Converting Colors

CIELCh(55, 84.070, 9.315)

Have a look what the booklet for  
CIELCh(55, 84.070, 9.315) contains.

<b>CIELCh(55, 83.776, 9.281)</b> .....	3
<i><b>Conversions</b></i> .....	4
<i><b>Details</b></i> .....	6
<i><b>Harmonies</b></i> .....	11
<i><b>Previews</b></i> .....	20
<i><b>Color Blindness Simulation</b></i> .....	23
<i><b>CSS Examples</b></i> .....	26

**Color**

**CIELCh(55, 83.776, 9.281)**

# Conversions

## Conversions Part 1

Format	Color
Hex	FF0F71
RGB	255, 15, 113
RGB Percent	100%, 6%, 44%
CMY	0.0000, 0.9419, 0.5584
CMYK	0.00, 0.94, 0.56, 0.00
HSL	336°, 100%, 53%
HSV	336°, 94%, 100%
XYZ	44.6600, 22.9298, 17.5787
YIQ	97.9320, 111.5820, 81.3580

# Conversions

## Conversions Part 2

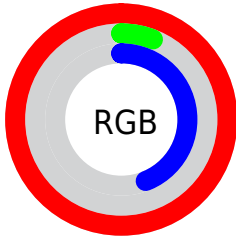
<b>Format</b>	<b>Color</b>
R <sub>Y</sub> B	255, 15, 113
Decimal	16715633
CIE <sub>Lab</sub>	55.00, 82.68, 13.51
CIE <sub>LCh</sub>	55, 83.776, 9.281
Yxy	22.9298, 0.5244, 0.2692
Android (android.graphics.Color)	4294905713 (0xFFFF0F71)
YUV	97.9320, 7.4285, 137.7486
Hunter-Lab	47.8851, 82.6787, 11.7542

# Details

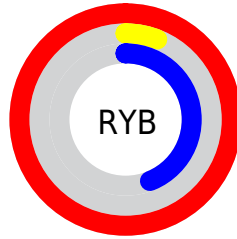
The CIELCh color **55, 83.776, 9.281** is a dark color, and the websafe version is hex **FF0066**. The color can be described as dark saturated rose. A complement of this color would be **89, 78.630, 155.177**, and the grayscale version is **41, 0.006, 296.813**.

A 20% lighter version of the original color is **65, 63.754, 357.331**, and **40, 69.269, 17.038** is the 20% darker color. If you saturate the color by 10%, you get **54, 84.880, 12.115**, and if you desaturate by 10%, it is **56, 80.277, 4.615**.

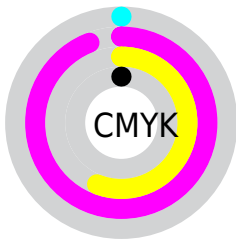
# Distribution



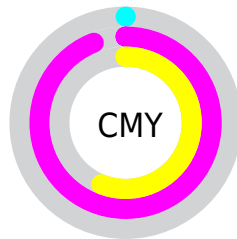
- Red (100%)
- Green (6%)
- Blue (44%)



- Red (100%)
- Yellow (6%)
- Blue (44%)



- Cyan (0%)
- Magenta (94%)
- Yellow (56%)
- Black (0%)



- Cyan (0%)
- Magenta (94%)
- Yellow (56%)

# Brightness & Saturation Gradients

These gradients show how the CIELCh color 55, 83.776, 9.281 changes by changing the brightness by 10 percent. The first figure shows a shift by +10% for each color and the second figure -10%.

Similar to the brightness gradients but the following saturation gradients show a change of the CIELCh color 55, 83.776, 9.281 by changing the saturation by 10% instead.



 55, 83.776, 9.281       55, 83.776, 9.281

 100, 83.776, 9.281       45, 83.776, 9.281

 75, 83.776, 9.281       35, 83.776, 9.281


 85, 83.776, 9.281       25, 83.776, 9.281

 95, 83.776, 9.281       15, 83.776, 9.281

 5, 83.776, 9.281

 0, 83.776, 9.281

 55, 83.776, 9.281       55, 83.776, 9.281

 54, 84.880, 12.115       56, 80.277, 4.615

 59, 74.910, 1.018

63, 67.452,  
358.192

67, 58.309,  
355.955

72, 48.038,  
354.148

78, 37.165,  
352.652

84, 26.098,  
351.383

91, 15.118,  
350.275

97, 4.398, 349.229

# Harmonies

# Complementary

The Complementary color scheme is a pair of colors which are on the opposite of each other on the color wheel.



55, 83.776, 9.281



89, 78.630, 155.177

# Rectangle

The Rectangle color scheme consists of four colors that form a rectangle on the color wheel.



55, 83.776, 9.281



55, 83.776, 59.281



55, 83.776, 189.281



55, 83.776, 239.281

# Sweetspot

The Sweet Spot groups the original color and five complimentary colors.



55, 83.556, 9.139



82, 30.315, 351.844



45, 120.594, 314.176



41, 20.992, 352.399



0, 0.000, 0.000



53, 0.007, 296.813



# Same Dimension

The Same Dimension uses a secret algorithm to generate beautiful new colors.



55, 83.556, 9.139



54, 84.880, 12.115



55, 99.913, 39.987



50, 6.014, 349.793



41, 68.244, 11.113



10, 31.316, 4.182





# Inverse Universe

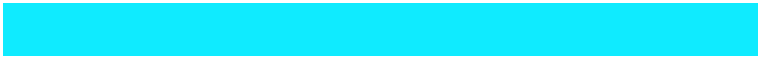
The Inverse Universe completely reimagines the original color for something new.



55, 83.556, 9.139



54, 84.880, 12.115



85, 45.085, 210.378



50, 6.014, 349.793



41, 68.244, 11.113



10, 31.316, 4.182



# Previews

## White Background



This preview shows how the CIELCh color 55, 83.776, 9.281 looks on a white background.

## Color Contrast Check

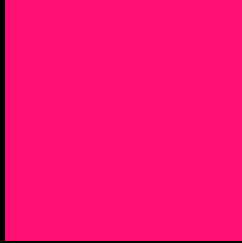
Large Text (above 18pt) WCAG AA ✓ Pass

Any Text WCAG AA ✗ Fail

Large Text (above 18pt) WCAG AAA ✗ Fail

Any Text WCAG AAA ✗ Fail

# Black Background



This preview shows how the CIELCh color 55, 83.776, 9.281 looks on a black background.

## Color Contrast Check

Large Text (above 18pt) WCAG AA ✓ Pass

Any Text WCAG AA ✓ Pass

Large Text (above 18pt) WCAG AAA ✓ Pass

Any Text WCAG AAA × Fail

If you want to check with other color combinations, try the [Color Contrast Checker](#).

**CIELCh 55, 83.776, 9.281**

## **Background**



This preview shows how black text looks on a background with the CIELCh color 55, 83.776, 9.281.



This preview shows how white text looks on a background with the CIELCh color 55, 83.776, 9.281.

# Color Blindness Simulation

Color vision deficiency is a very complex topic, and I could not describe the different causes any better than Wikipedia does, so if you want to learn more, you should check out their [article about color blindness](#).

## Dichromacy



### Original Color

55, 83.531, 8.991

### Protanopia

55, 18.442, 285.778

### Deuteranopia

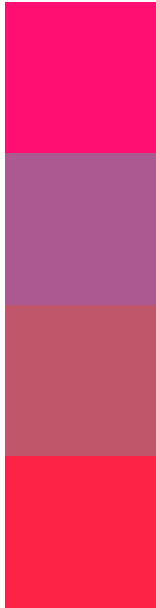
55, 18.994, 68.298



**Tritanopia**  
55, 90.487, 35.154



# Trichromacy



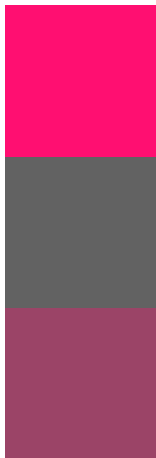
**Original Color**  
55, 83.531, 8.991

**Protanomaly**  
49, 44.093, 339.153

**Deuteranomaly**  
50, 45.056, 12.026

**Tritanomaly**  
55, 86.189, 26.320

# Monochromacy



**Original Color**  
55, 83.531, 8.991

**Achromatopsia**  
42, 0.006, 296.813

**Achromatomaly**  
41, 40.207, 356.316

# CSS Examples

## Text

The CSS property to change the color of the text to CIELCh 55, 83.776, 9.281 is called "color". The color property can be set on classes, ids or directly on the HTML element.

This example shows how text in the color `rgb(255, 15, 113)` looks like.

```
.text, #text, p{  
    color:rgb(255, 15, 113)  
}
```

If you want to add a text shadow in that color use the text-shadow property, you can generate a text shadow directly with our [CSS Text Shadow Generator](#).

Here you see how black text with a 4 pixel rgb(255, 15, 113) colored shadow looks like.

```
.shadow{ text-shadow: 4px 4px 2px rgb(255, 15, 113) }
```

## Border

The CSS property to change the border of an element to CIELCh 55, 83.776, 9.281 is called "border". The border property can be set on classes, ids or directly on the HTML element.

This example shows the color as border, it can be applied via the CSS property "border" or "border-color".

```
.border, #border, table{ border:4px solid rgb(255, 15, 113) }
```

If only the border color should be changed use the property border-color.

```
.border{ border-color:rgb(255, 15, 113) }
```

If you want to add a box shadow in that color use:

Here you see how a box with a 4 pixel rgb(255, 15, 113) colored shadow looks like.

```
.boxshadow{ -moz-box-shadow:4px 4px 4px  
4px rgb(255, 15, 113); -webkit-box-  
shadow:4px 4px 4px 4px rgb(255, 15, 113);  
box-shadow:4px 4px 4px 4px rgb(255, 15,  
113) }
```

# Background

The CSS property to change the background color of an element to CIELCh 55, 83.776, 9.281 is called "background". The background property can be set on classes, ids or directly on the HTML element.

```
.background, #background, body{  
background: rgb(255, 15, 113) }
```

If only the background color should be changed can be used:

```
.background{ background-color: rgb(255, 15,  
113) }
```

This example shows the color as background, it is applied via the CSS property "background".

To optimize and compress your CSS code, you can use our [online CSS compressor and optimizer](#) based on csstidy. If you want to create a linear or radial gradient as background or border, check our [CSS Gradient Generator](#).

Hey! You found this booklet interesting? Support Converting Colors with the new Membership Option!

The pro membership hides all ads, plus gives you double the colors in the color bucket, and more awesome pro features!

**[Learn more, Memberships starting at \\$2.50/m!](#)**

**Follow me  
on Twitter!**

**@ConvertingColor**