

Converting Colors

CIELCh(55, 84.790, 19.464)

Have a look what the booklet for
CIELCh(55, 84.790, 19.464) contains.

CIELCh(55, 84.550, 19.341)	3
<i>Conversions</i>	4
<i>Details</i>	6
<i>Harmonies</i>	11
<i>Previews</i>	20
<i>Color Blindness Simulation</i>	23
<i>CSS Examples</i>	26

Color

CIELCh(55, 84.550, 19.341)

Conversions

Conversions Part 1

Format	Color
Hex	FF1C58
RGB	255, 28, 88
RGB Percent	100%, 11%, 35%
CMY	0.0000, 0.8892, 0.6532
CMYK	0.00, 0.89, 0.65, 0.00
HSL	344°, 100%, 56%
HSV	344°, 89%, 100%
XYZ	43.6675, 22.9298, 11.4537
YIQ	102.7130, 116.0320, 66.7840

Conversions

Conversions Part 2

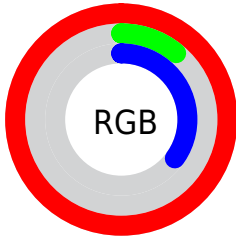
Format	Color
RYB	255, 28, 88
Decimal	16718936
CIELab	55.00, 79.78, 28.00
CIELCh	55, 84.550, 19.341
Yxy	22.9298, 0.5595, 0.2938
Android (android.graphics.Color)	4294909016 (0xFFFF1C58)
YUV	102.7130, -7.2535, 133.5557
Hunter-Lab	47.8851, 78.9792, 19.3379

Details

The CIELCh color **55, 84.550, 19.341** is a dark color, and the websafe version is hex **FF3366**. The color can be described as dark washed red. A complement of this color would be **90, 64.685, 166.584**, and the grayscale version is **44, 0.006, 296.813**.

A 20% lighter version of the original color is **64, 60.892, 11.029**, and **40, 73.310, 27.532** is the 20% darker color. If you saturate the color by 10%, you get **54, 89.466, 24.806**, and if you desaturate by 10%, it is **57, 78.052, 14.469**.

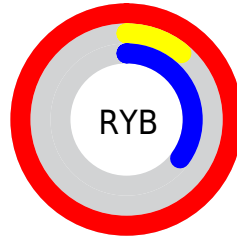
Distribution



Red (100%)

Green (11%)

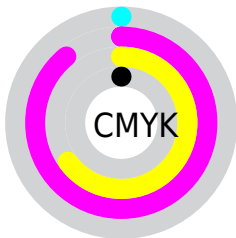
Blue (35%)



Red (100%)

Yellow (11%)

Blue (35%)

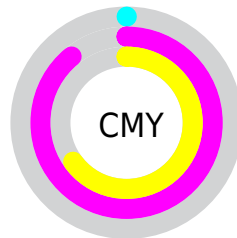


Cyan (0%)

Magenta (89%)

Yellow (65%)

Black (0%)



Cyan (0%)

Magenta (89%)

Yellow (65%)


Brightness & Saturation Gradients

These gradients show how the CIELCh color 55, 84.550, 19.341 changes by changing the brightness by 10 percent. The first figure shows a shift by +10% for each color and the second figure -10%.

Similar to the brightness gradients but the following saturation gradients show a change of the CIELCh color 55, 84.550, 19.341 by changing the saturation by 10% instead.

 55, 84.550, 19.341

 55, 84.550, 19.341

 100, 84.550,
19.341

 45, 84.550, 19.341

 75, 84.550, 19.341

 35, 84.550, 19.341

 85, 84.550, 19.341

 25, 84.550, 19.341

 95, 84.550, 19.341

 15, 84.550, 19.341

 5, 84.550, 19.341

 0, 84.550, 19.341

 55, 84.550, 19.341

 55, 84.550, 19.341

 54, 89.466, 24.806

 57, 78.052, 14.469

 54, 90.023, 25.395

 60, 70.230, 10.598

64, 61.032, 7.543

69, 50.874, 5.134

75, 40.227, 3.209

81, 29.488, 1.639

87, 18.935, 0.327

94, 8.736, 359.188

100, 0.012,
296.813

Harmonies

Complementary

The Complementary color scheme is a pair of colors which are on the opposite of each other on the color wheel.



55, 84.550, 19.341



90, 64.685, 166.584

Rectangle

The Rectangle color scheme consists of four colors that form a rectangle on the color wheel.



55, 84.550, 19.341



55, 84.550, 69.341



55, 84.550, 199.341



55, 84.550, 249.341

Sweetspot

The Sweet Spot groups the original color and five complimentary colors.



55, 84.347, 19.261



82, 27.438, 1.369



51, 115.285, 318.919



42, 18.594, 1.855



0, 0.000, 0.000



53, 0.007, 296.813

Same Dimension

The Same Dimension uses a secret algorithm to generate beautiful new colors.



55, 84.347, 19.261



54, 90.023, 25.395



59, 89.663, 44.634



50, 5.574, 359.252



40, 71.977, 24.310



10, 31.619, 15.041

Inverse Universe

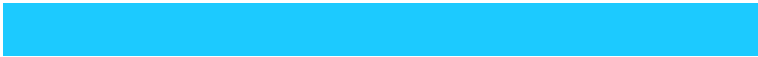
The Inverse Universe completely reimagines the original color for something new.



55, 84.347, 19.261



54, 90.023, 25.395



76, 43.560, 238.879



50, 5.574, 359.252



40, 71.977, 24.310



10, 31.619, 15.041

Previews

White Background



This preview shows how the CIELCh color 55, 84.550, 19.341 looks on a white background.

Color Contrast Check

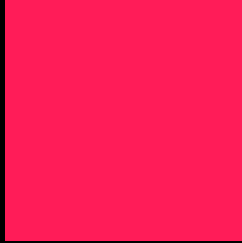
Large Text (above 18pt) WCAG AA ✓ Pass

Any Text WCAG AA ✗ Fail

Large Text (above 18pt) WCAG AAA ✗ Fail

Any Text WCAG AAA ✗ Fail

Black Background



This preview shows how the CIELCh color 55, 84.550, 19.341 looks on a black background.

Color Contrast Check

Large Text (above 18pt) WCAG AA ✓ Pass

Any Text WCAG AA ✓ Pass

Large Text (above 18pt) WCAG AAA ✓ Pass

Any Text WCAG AAA × Fail

If you want to check with other color combinations, try the [Color Contrast Checker](#).

CIELCh 55, 84.550, 19.341

Background



This preview shows how black text looks on a background with the CIELCh color 55, 84.550, 19.341.



This preview shows how white text looks on a background with the CIELCh color 55, 84.550, 19.341.

Color Blindness Simulation

Color vision deficiency is a very complex topic, and I could not describe the different causes any better than Wikipedia does, so if you want to learn more, you should check out their [article about color blindness](#).

Dichromacy



Original Color

55, 84.439, 19.412

Protanopia

55, 2.335, 66.633

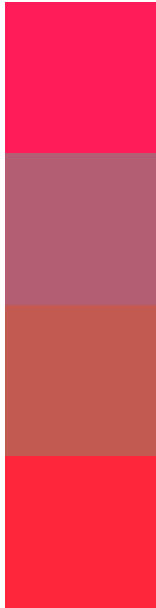
Deuteranopia

55, 32.267, 77.696



Tritanopia
55, 92.673, 35.878

Trichromacy



Original Color
55, 84.439, 19.412

Protanomaly
50, 36.842, 6.881

Deuteranomaly
51, 48.530, 31.672

Tritanomaly
55, 88.952, 30.626

Monochromacy



Original Color
55, 84.439, 19.412

Achromatopsia
44, 0.006, 296.813

Achromatomaly
43, 36.588, 5.220

CSS Examples

Text

The CSS property to change the color of the text to CIELCh 55, 84.550, 19.341 is called "color". The color property can be set on classes, ids or directly on the HTML element.

This example shows how text in the color `rgb(255, 28, 88)` looks like.

```
.text, #text, p{  
    color:rgb(255, 28, 88)  
}
```

If you want to add a text shadow in that color use the text-shadow property, you can generate a text shadow directly with our [CSS Text Shadow Generator](#).

Here you see how black text with a 4 pixel rgb(255, 28, 88) colored shadow looks like.

```
.shadow{ text-shadow: 4px 4px 2px rgb(255, 28, 88) }
```

Border

The CSS property to change the border of an element to CIELCh 55, 84.550, 19.341 is called "border". The border property can be set on classes, ids or directly on the HTML element.

This example shows the color as border, it can be applied via the CSS property "border" or "border-color".

```
.border, #border, table{ border:4px solid rgb(255, 28, 88) }
```

If only the border color should be changed use the property border-color.

```
.border{ border-color:rgb(255, 28, 88) }
```

If you want to add a box shadow in that color use:

Here you see how a box with a 4 pixel rgb(255, 28, 88) colored shadow looks like.

```
.boxshadow{ -moz-box-shadow:4px 4px 4px  
4px rgb(255, 28, 88); -webkit-box-  
shadow:4px 4px 4px 4px rgb(255, 28, 88);  
box-shadow:4px 4px 4px 4px rgb(255, 28,  
88) }
```

Background

The CSS property to change the background color of an element to CIELCh 55, 84.550, 19.341 is called "background". The background property can be set on classes, ids or directly on the HTML element.

```
.background, #background, body{  
background: rgb(255, 28, 88) }
```

If only the background color should be changed can be used:

```
.background{ background-color: rgb(255, 28,  
88) }
```

This example shows the color as background, it is applied via the CSS property "background".

To optimize and compress your CSS code, you can use our [online CSS compressor and optimizer](#) based on csstidy. If you want to create a linear or radial gradient as background or border, check our [CSS Gradient Generator](#).

Hey! You found this booklet interesting? Support Converting Colors with the new Membership Option!

The pro membership hides all ads, plus gives you double the colors in the color bucket, and more awesome pro features!

[Learn more, Memberships starting at \\$2.50/m!](#)

**Follow me
on Twitter!**

@ConvertingColor