

Converting Colors

CIELCh(55, 85.063, 18.073)

Have a look what the booklet for
CIELCh(55, 85.063, 18.073) contains.

CIELCh(55, 84.553, 17.944)	3
<i>Conversions</i>	4
<i>Details</i>	6
<i>Harmonies</i>	11
<i>Previews</i>	20
<i>Color Blindness Simulation</i>	23
<i>CSS Examples</i>	26

Color

CIELCh(55, 84.553, 17.944)

Conversions

Conversions Part 1

Format	Color
Hex	FF195C
RGB	255, 25, 92
RGB Percent	100%, 10%, 36%
CMY	0.0000, 0.9008, 0.6402
CMYK	0.00, 0.90, 0.64, 0.00
HSL	343°, 100%, 55%
HSV	343°, 90%, 100%
XYZ	43.8926, 22.9298, 12.1791
YIQ	101.4080, 115.5730, 69.5970

Conversions

Conversions Part 2

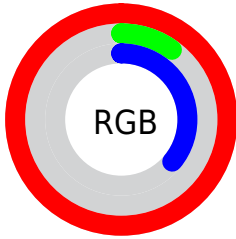
Format	Color
RYB	255, 25, 92
Decimal	16718172
CIELab	55.00, 80.44, 26.05
CIELCh	55, 84.553, 17.944
Yxy	22.9298, 0.5556, 0.2902
Android (android.graphics.Color)	4294908252 (0xFFFF195C)
YUV	101.4080, -4.6381, 134.7002
Hunter-Lab	47.8851, 79.8183, 18.4397

Details

The CIELCh color **55, 84.553, 17.944** is a dark color, and the websafe version is hex **FF3366**. The color can be described as dark washed red. A complement of this color would be **90, 66.949, 164.396**, and the grayscale version is **43, 0.006, 296.813**.

A 20% lighter version of the original color is **64, 61.280, 8.690**, and **40, 72.369, 25.814** is the 20% darker color. If you saturate the color by 10%, you get **54, 88.800, 23.315**, and if you desaturate by 10%, it is **57, 78.490, 12.978**.

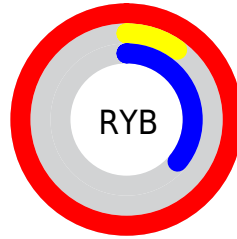
Distribution



Red (100%)

Green (10%)

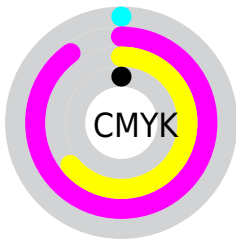
Blue (36%)



Red (100%)

Yellow (10%)

Blue (36%)

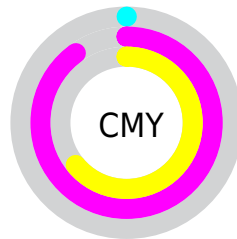


Cyan (0%)

Magenta (90%)

Yellow (64%)

Black (0%)



Cyan (0%)

Magenta (90%)

Yellow (64%)

Brightness & Saturation Gradients

These gradients show how the CIELCh color 55, 84.553, 17.944 changes by changing the brightness by 10 percent. The first figure shows a shift by +10% for each color and the second figure -10%.

Similar to the brightness gradients but the following saturation gradients show a change of the CIELCh color 55, 84.553, 17.944 by changing the saturation by 10% instead.

 55, 84.553, 17.944

 55, 84.553, 17.944

 100, 84.553,
17.944

 45, 84.553, 17.944

 75, 84.553, 17.944

 35, 84.553, 17.944

 85, 84.553, 17.944

 25, 84.553, 17.944

 95, 84.553, 17.944

 15, 84.553, 17.944

 5, 84.553, 17.944


 0, 84.553, 17.944

 55, 84.553, 17.944

 55, 84.553, 17.944

 54, 88.800, 23.315

 57, 78.490, 12.978

 60, 71.132, 9.090

64, 62.266, 6.025

69, 52.303, 3.607

74, 41.732, 1.673

80, 30.975, 0.093

87, 20.337,
358.770

93, 10.007,
357.625

100, 0.086,
349.942

Harmonies

Complementary

The Complementary color scheme is a pair of colors which are on the opposite of each other on the color wheel.



55, 84.553, 17.944



90, 66.949, 164.396

Rectangle

The Rectangle color scheme consists of four colors that form a rectangle on the color wheel.



55, 84.553, 17.944



55, 84.553, 67.944



55, 84.553, 197.944



55, 84.553, 247.944

Sweetspot

The Sweet Spot groups the original color and five complimentary colors.



55, 84.225, 17.802



82, 27.674, 359.662



50, 116.378, 317.818



42, 18.743, 0.141



0, 0.000, 0.000



53, 0.007, 296.813

Same Dimension

The Same Dimension uses a secret algorithm to generate beautiful new colors.



55, 84.225, 17.802



54, 88.800, 23.315



58, 92.233, 43.153



50, 5.636, 357.562



40, 71.061, 22.224



10, 31.506, 13.487

Inverse Universe

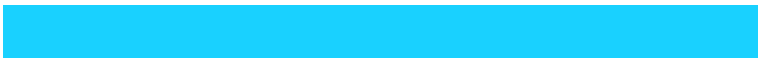
The Inverse Universe completely reimagines the original color for something new.



55, 84.225, 17.802



54, 88.800, 23.315



78, 43.064, 232.596



50, 5.636, 357.562



40, 71.061, 22.224



10, 31.506, 13.487

Previews

White Background



This preview shows how the CIELCh color 55, 84.553, 17.944 looks on a white background.

Color Contrast Check

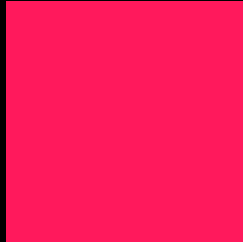
Large Text (above 18pt) WCAG AA ✓ Pass

Any Text WCAG AA × Fail

Large Text (above 18pt) WCAG AAA × Fail

Any Text WCAG AAA × Fail

Black Background



This preview shows how the CIELCh color 55, 84.553, 17.944 looks on a black background.

Color Contrast Check

Large Text (above 18pt) WCAG AA ✓ Pass

Any Text WCAG AA ✓ Pass

Large Text (above 18pt) WCAG AAA ✓ Pass

Any Text WCAG AAA × Fail

If you want to check with other color combinations, try the [Color Contrast Checker](#).

CIELCh 55, 84.553, 17.944

Background



This preview shows how black text looks on a background with the CIELCh color 55, 84.553, 17.944.



This preview shows how white text looks on a background with the CIELCh color 55, 84.553, 17.944.

Color Blindness Simulation

Color vision deficiency is a very complex topic, and I could not describe the different causes any better than Wikipedia does, so if you want to learn more, you should check out their [article about color blindness](#).

Dichromacy



Original Color

55, 84.223, 17.685

Protanopia

55, 1.663, 335.659

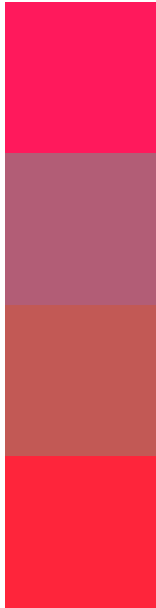
Deuteranopia

55, 30.041, 76.851



Tritanopia
55, 92.314, 35.852

Trichromacy



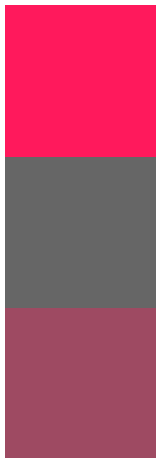
Original Color
55, 84.223, 17.685

Protanomaly
50, 37.283, 2.551

Deuteranomaly
51, 47.538, 28.592

Tritanomaly
55, 88.832, 30.216

Monochromacy



Original Color
55, 84.223, 17.685

Achromatopsia
43, 0.006, 296.813

Achromatomaly
43, 37.582, 4.188

CSS Examples

Text

The CSS property to change the color of the text to CIELCh 55, 84.553, 17.944 is called "color". The color property can be set on classes, ids or directly on the HTML element.

This example shows how text in the color `rgb(255, 25, 92)` looks like.

```
.text, #text, p{  
    color:rgb(255, 25, 92)  
}
```

If you want to add a text shadow in that color use the text-shadow property, you can generate a text shadow directly with our [CSS Text Shadow Generator](#).

Here you see how black text with a 4 pixel rgb(255, 25, 92) colored shadow looks like.

```
.shadow{ text-shadow: 4px 4px 2px rgb(255, 25, 92) }
```

Border

The CSS property to change the border of an element to CIELCh 55, 84.553, 17.944 is called "border". The border property can be set on classes, ids or directly on the HTML element.

This example shows the color as border, it can be applied via the CSS property "border" or "border-color".

```
.border, #border, table{ border:4px solid rgb(255, 25, 92) }
```

If only the border color should be changed use the property `border-color`.

```
.border{ border-color:rgb(255, 25, 92) }
```

If you want to add a box shadow in that color use:

Here you see how a box with a 4 pixel `rgb(255, 25, 92)` colored shadow looks like.

```
.boxshadow{ -moz-box-shadow:4px 4px 4px  
4px rgb(255, 25, 92); -webkit-box-  
shadow:4px 4px 4px 4px rgb(255, 25, 92);  
box-shadow:4px 4px 4px 4px rgb(255, 25,  
92) }
```

Background

The CSS property to change the background color of an element to CIELCh 55, 84.553, 17.944 is called "background". The background property can be set on classes, ids or directly on the HTML element.

```
.background, #background, body{  
background: rgb(255, 25, 92) }
```

If only the background color should be changed can be used:

```
.background{ background-color: rgb(255, 25,  
92) }
```

This example shows the color as background, it is applied via the CSS property "background".

To optimize and compress your CSS code, you can use our [online CSS compressor and optimizer](#) based on csstidy. If you want to create a linear or radial gradient as background or border, check our [CSS Gradient Generator](#).

Hey! You found this booklet interesting? Support Converting Colors with the new Membership Option!

The pro membership hides all ads, plus gives you double the colors in the color bucket, and more awesome pro features!

[Learn more, Memberships starting at \\$2.50/m!](#)

**Follow me
on Twitter!**

@ConvertingColor