

Converting Colors

CIELCh(56, 19.025, 54.266)

Have a look what the booklet for
CIELCh(56, 19.025, 54.266) contains.

CIELCh(56, 18.838, 55.316)	3
<i>Conversions</i>	4
<i>Details</i>	6
<i>Harmonies</i>	11
<i>Previews</i>	20
<i>Color Blindness Simulation</i>	23
<i>CSS Examples</i>	26

Color

CIELCh(56, 18.838, 55.316)

Conversions

Conversions Part 1

Format	Color
Hex	A27F6C
RGB	162, 127, 108
RGB Percent	64%, 50%, 42%
CMY	0.3650, 0.5022, 0.5768
CMYK	0.00, 0.22, 0.33, 0.37
HSL	21°, 22%, 53%
HSV	21°, 33%, 63%
XYZ	25.1655, 23.9124, 17.4553
YIQ	135.2990, 26.9590, 1.5110

Conversions

Conversions Part 2

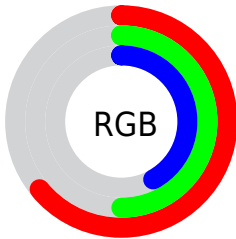
Format	Color
RYB	162, 137, 108
Decimal	10649452
CIELab	56.00, 10.72, 15.49
CIELCh	56, 18.838, 55.316
Yxy	23.9124, 0.3782, 0.3594
Android (android.graphics.Color)	4288839532 (0xFFA27F6C)
YUV	135.2990, -13.4584, 23.4168
Hunter-Lab	48.9003, 6.2856, 13.0662

Details

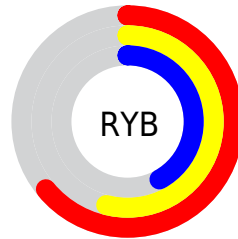
The CIELCh color $56, 18.838, 55.316$ is a dark color, and the websafe version is hex 996666 . A complement of this color would be $57, 15.800, 242.122$, and the grayscale version is $56, 0.007, 296.813$.

A 20% lighter version of the original color is $76, 19.084, 56.189$, and $36, 18.987, 56.273$ is the 20% darker color. If you saturate the color by 10%, you get $53, 25.371, 54.649$, and if you desaturate by 10%, it is $59, 12.731, 56.059$.

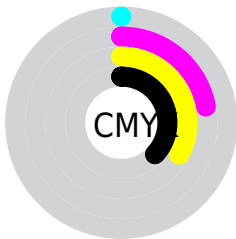
Distribution



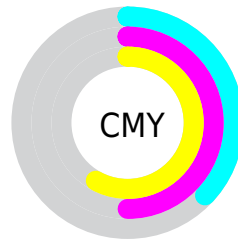
- Red (64%)
- Green (50%)
- Blue (42%)



- Red (64%)
- Yellow (54%)
- Blue (42%)



- Cyan (0%)
- Magenta (22%)
- Yellow (33%)
- Black (37%)



- Cyan (37%)
- Magenta (50%)
- Yellow (58%)

Brightness & Saturation Gradients

These gradients show how the CIELCh color 56, 18.838, 55.316 changes by changing the brightness by 10 percent. The first figure shows a shift by +10% for each color and the second figure -10%.

Similar to the brightness gradients but the following saturation gradients show a change of the CIELCh color 56, 18.838, 55.316 by changing the saturation by 10% instead.

■ 56, 18.838, 55.316

■ 56, 18.838, 55.316

■ 100, 18.838,
55.316

■ 46, 18.838, 55.316

■ 76, 18.838, 55.316

■ 36, 18.838, 55.316

■ 86, 18.838, 55.316

■ 26, 18.838, 55.316

■ 96, 18.838, 55.316

■ 16, 18.838, 55.316

■ 6, 18.838, 55.316

■ 0, 18.838, 55.316

■ 56, 18.838, 55.316

■ 56, 18.838, 55.316

■ 53, 25.371, 54.649

■ 59, 12.731, 56.059

■ 50, 32.329, 54.048

■ 62, 7.030, 56.831

47, 39.661, 53.511

66, 1.702, 57.483

45, 47.212, 52.989

69, 3.292, 238.700

42, 54.626, 52.336

72, 7.987, 239.489

40, 61.169, 51.225

75, 12.419,
240.332

39, 65.200, 50.536

79, 16.619,
241.174

82, 20.617,
242.003

85, 24.438,
242.813

Harmonies

Complementary

The Complementary color scheme is a pair of colors which are on the opposite of each other on the color wheel.



56, 18.838, 55.316



57, 15.800, 242.122

Rectangle

The Rectangle color scheme consists of four colors that form a rectangle on the color wheel.



56, 18.838, 55.316



56, 18.838, 105.316



56, 18.838, 235.316



56, 18.838, 285.316

Sweetspot

The Sweet Spot groups the original color and five complimentary colors.



56, 18.838, 55.323



81, 6.481, 57.072



52, 28.963, 338.932



42, 4.478, 56.970



93, 0.011, 296.813



45, 0.006, 296.813

Same Dimension

The Same Dimension uses a secret algorithm to generate beautiful new colors.



56, 18.838, 55.323



69, 28.853, 54.816



63, 25.566, 99.592



33, 2.958, 57.140



35, 60.046, 50.877



2, 4.474, 53.884

Inverse Universe

The Inverse Universe completely reimagines the original color for something new.



57, 15.800, 242.122



71, 23.115, 243.490



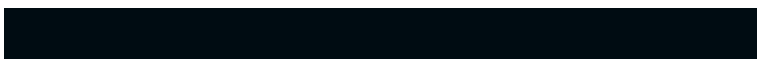
50, 26.929, 287.814



33, 2.835, 238.958



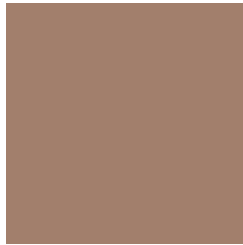
38, 34.838, 264.079



3, 4.552, 245.051

Previews

White Background



This preview shows how the CIELCh color 56, 18.838, 55.316 looks on a white background.

Color Contrast Check

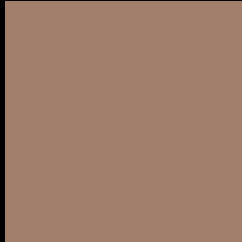
Large Text (above 18pt) WCAG AA ✓ Pass

Any Text WCAG AA × Fail

Large Text (above 18pt) WCAG AAA × Fail

Any Text WCAG AAA × Fail

Black Background



This preview shows how the CIELCh color 56, 18.838, 55.316 looks on a black background.

Color Contrast Check

Large Text (above 18pt) WCAG AA ✓ Pass

Any Text WCAG AA ✓ Pass

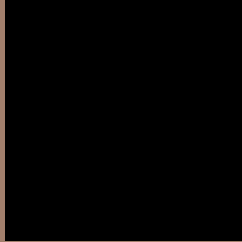
Large Text (above 18pt) WCAG AAA ✓ Pass

Any Text WCAG AAA × Fail

If you want to check with other color combinations, try the [Color Contrast Checker](#).

CIELCh 56, 18.838, 55.316

Background



This preview shows how black text looks on a background with the CIELCh color 56, 18.838, 55.316.



This preview shows how white text looks on a background with the CIELCh color 56, 18.838, 55.316.

Color Blindness Simulation

Color vision deficiency is a very complex topic, and I could not describe the different causes any better than Wikipedia does, so if you want to learn more, you should check out their [article about color blindness](#).

Dichromacy



Original Color

56, 18.838, 55.316

Protanopia

56, 13.516, 94.119

Deuteranopia

56, 17.593, 65.155



Tritanopia
56, 17.921, 3.062

Trichromacy



Original Color
56, 18.838, 55.316

Protanomaly
56, 14.284, 76.198

Deuteranomaly
56, 18.178, 61.106

Tritanomaly
56, 16.653, 21.225

Monochromacy



Original Color
56, 18.838, 55.316

Achromatopsia
56, 0.007, 296.813

Achromatomaly
56, 6.647, 56.577

CSS Examples

Text

The CSS property to change the color of the text to CIELCh 56, 18.838, 55.316 is called "color". The color property can be set on classes, ids or directly on the HTML element.

This example shows how text in the color `rgb(162, 127, 108)` looks like.

```
.text, #text, p{  
    color:rgb(162, 127, 108)  
}
```

If you want to add a text shadow in that color use the text-shadow property, you can generate a text shadow directly with our [CSS Text Shadow Generator](#).

Here you see how black text with a 4 pixel rgb(162, 127, 108) colored shadow looks like.

```
.shadow{ text-shadow: 4px 4px 2px rgb(162, 127, 108) }
```

Border

The CSS property to change the border of an element to CIELCh 56, 18.838, 55.316 is called "border". The border property can be set on classes, ids or directly on the HTML element.

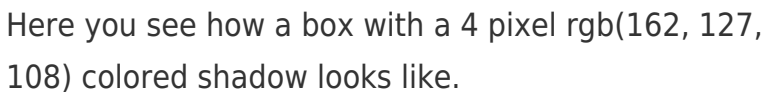
This example shows the color as border, it can be applied via the CSS property "border" or "border-color".

```
.border, #border, table{ border:4px solid rgb(162, 127, 108) }
```

If only the border color should be changed use the property `border-color`.

```
.border{ border-color:rgb(162, 127, 108) }
```

If you want to add a box shadow in that color use:



Here you see how a box with a 4 pixel `rgb(162, 127, 108)` colored shadow looks like.

```
.boxshadow{ -moz-box-shadow:4px 4px 4px 4px rgb(162, 127, 108); -webkit-box-shadow:4px 4px 4px 4px rgb(162, 127, 108); box-shadow:4px 4px 4px 4px rgb(162, 127, 108) }
```

Background

The CSS property to change the background color of an element to CIELCh 56, 18.838, 55.316 is called "background". The background property can be set on classes, ids or directly on the HTML element.

```
.background, #background, body{  
background: rgb(162, 127, 108) }
```

If only the background color should be changed can be used:

```
.background{ background-color: rgb(162,  
127, 108) }
```

This example shows the color as background, it is applied via the CSS property "background".

To optimize and compress your CSS code, you can use our [online CSS compressor and optimizer](#) based on csstidy. If you want to create a linear or radial gradient as background or border, check our [CSS Gradient Generator](#).

Hey! You found this booklet interesting? Support Converting Colors with the new Membership Option!

The pro membership hides all ads, plus gives you double the colors in the color bucket, and more awesome pro features!

[Learn more, Memberships starting at \\$2.50/m!](#)

**Follow me
on Twitter!**

@ConvertingColor