

Converting Colors

CIELCh(56, 21.791, 70.839)

Have a look what the booklet for
CIELCh(56, 21.791, 70.839) contains.

CIELCh(56, 21.828, 70.812)	3
<i>Conversions</i>	4
<i>Details</i>	6
<i>Harmonies</i>	11
<i>Previews</i>	20
<i>Color Blindness Simulation</i>	23
<i>CSS Examples</i>	26

Color

CIELCh(56, 21.828, 70.812)

Conversions

Conversions Part 1

Format	Color
Hex	9F8163
RGB	159, 129, 99
RGB Percent	62%, 51%, 39%
CMY	0.3771, 0.4947, 0.6123
CMYK	0.00, 0.19, 0.38, 0.38
HSL	30°, 24%, 51%
HSV	30°, 38%, 62%
XYZ	24.3410, 23.9124, 15.0999
YIQ	134.5500, 27.5100, -2.9700

Conversions

Conversions Part 2

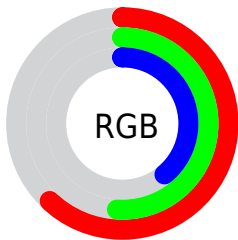
Format	Color
R_{YB}	159, 159, 99
Decimal	10453347
CIE Lab	56.00, 7.17, 20.62
CIE LCh	56, 21.828, 70.812
Yxy	23.9124, 0.3842, 0.3774
Android (android.graphics.Color)	4288643427 (0xFF9F8163)
YUV	134.5500, -17.5261, 21.4427
Hunter-Lab	48.9003, 3.2758, 15.9221

Details

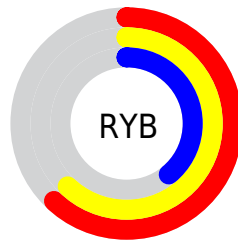
The CIELCh color $56, 21.828, 70.812$ is a dark color, and the websafe version is hex 999966 . A complement of this color would be $53, 19.658, 261.629$, and the grayscale version is $56, 0.007, 296.813$.

A 20% lighter version of the original color is $76, 21.926, 70.855$, and $36, 21.809, 71.252$ is the 20% darker color. If you saturate the color by 10%, you get $54, 28.239, 69.574$, and if you desaturate by 10%, it is $58, 15.679, 72.051$.

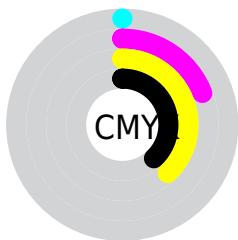
Distribution



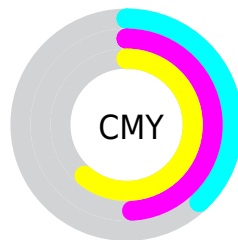
- Red (62%)
- Green (51%)
- Blue (39%)



- Red (62%)
- Yellow (62%)
- Blue (39%)



- Cyan (0%)
- Magenta (19%)
- Yellow (38%)
- Black (38%)



- Cyan (38%)
- Magenta (49%)
- Yellow (61%)

Brightness & Saturation Gradients

These gradients show how the CIELCh color 56, 21.828, 70.812 changes by changing the brightness by 10 percent. The first figure shows a shift by +10% for each color and the second figure -10%.

Similar to the brightness gradients but the following saturation gradients show a change of the CIELCh color 56, 21.828, 70.812 by changing the saturation by 10% instead.

■ 56, 21.828, 70.812

■ 56, 21.828, 70.812

■ 100, 21.828,
70.812

■ 46, 21.828, 70.812

■ 76, 21.828, 70.812

■ 36, 21.828, 70.812

■ 86, 21.828, 70.812

■ 26, 21.828, 70.812

■ 96, 21.828, 70.812

■ 16, 21.828, 70.812

■ 6, 21.828, 70.812

■ 0, 21.828, 70.812

■ 56, 21.828, 70.812

■ 56, 21.828, 70.812

■ 54, 28.239, 69.574

■ 58, 15.679, 72.051

■ 51, 34.864, 68.308

■ 61, 9.801, 73.265

■ 49, 41.578, 66.988

■ 63, 4.186, 74.433

■ 47, 48.113, 65.528

■ 66, 1.187, 255.954

■ 45, 53.958, 63.747

■ 69, 6.340, 256.898

■ 43, 58.606, 61.496

■ 71, 11.296,
257.996

■ 43, 59.699, 61.070

■ 74, 16.076,
259.068

■ 76, 20.701,
260.102

■ 79, 25.188,
261.093

Harmonies

Complementary

The Complementary color scheme is a pair of colors which are on the opposite of each other on the color wheel.



56, 21.828, 70.812



53, 19.658, 261.629

Rectangle

The Rectangle color scheme consists of four colors that form a rectangle on the color wheel.



56, 21.828, 70.812



56, 21.828, 120.812



56, 21.828, 250.812



56, 21.828, 300.812

Sweetspot

The Sweet Spot groups the original color and five complimentary colors.



56, 21.828, 70.818



79, 7.404, 74.042



49, 29.360, 347.258



42, 5.029, 73.894



92, 0.011, 296.813



44, 0.006, 296.813

Same Dimension

The Same Dimension uses a secret algorithm to generate beautiful new colors.



56, 21.828, 70.818



69, 32.812, 69.812



64, 32.692, 106.618



32, 3.047, 74.267



39, 55.129, 61.442



2, 3.854, 72.580

Inverse Universe

The Inverse Universe completely reimagines the original color for something new.



53, 19.658, 261.629



64, 28.824, 263.553



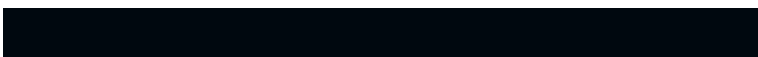
44, 35.910, 295.020



32, 2.984, 256.664



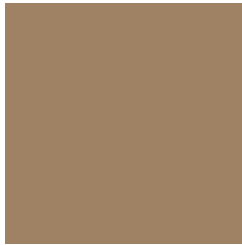
31, 45.959, 283.062



2, 4.001, 258.174

Previews

White Background



This preview shows how the CIELCh color 56, 21.828, 70.812 looks on a white background.

Color Contrast Check

Large Text (above 18pt) WCAG AA ✓ Pass

Any Text WCAG AA × Fail

Large Text (above 18pt) WCAG AAA × Fail

Any Text WCAG AAA × Fail

Black Background



This preview shows how the CIELCh color 56, 21.828, 70.812 looks on a black background.

Color Contrast Check

Large Text (above 18pt) WCAG AA ✓ Pass

Any Text WCAG AA ✓ Pass

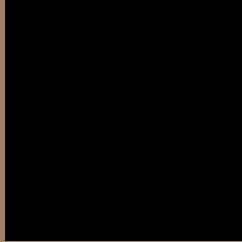
Large Text (above 18pt) WCAG AAA ✓ Pass

Any Text WCAG AAA × Fail

If you want to check with other color combinations, try the [Color Contrast Checker](#).

CIELCh 56, 21.828, 70.812

Background



This preview shows how black text looks on a background with the CIELCh color 56, 21.828, 70.812.



This preview shows how white text looks on a background with the CIELCh color 56, 21.828, 70.812.

Color Blindness Simulation

Color vision deficiency is a very complex topic, and I could not describe the different causes any better than Wikipedia does, so if you want to learn more, you should check out their [article about color blindness](#).

Dichromacy



Original Color

56, 21.828, 70.812

Protanopia

56, 19.234, 94.894

Deuteranopia

56, 21.828, 70.812



Tritanopia
56, 16.343, 0.975

Trichromacy



Original Color
56, 21.828, 70.812

Protanomaly
56, 19.714, 85.861

Deuteranomaly
56, 21.828, 70.812

Tritanomaly
56, 14.988, 31.769

Monochromacy



Original Color
56, 21.828, 70.812

Achromatopsia
56, 0.007, 296.813

Achromatomaly
56, 7.745, 73.557

CSS Examples

Text

The CSS property to change the color of the text to CIELCh 56, 21.828, 70.812 is called "color". The color property can be set on classes, ids or directly on the HTML element.

This example shows how text in the color `rgb(159, 129, 99)` looks like.

```
.text, #text, p{  
    color:rgb(159, 129, 99)  
}
```

If you want to add a text shadow in that color use the text-shadow property, you can generate a text shadow directly with our [CSS Text Shadow Generator](#).

Here you see how black text with a 4 pixel rgb(159, 129, 99) colored shadow looks like.

```
.shadow{ text-shadow: 4px 4px 2px rgb(159, 129, 99) }
```

Border

The CSS property to change the border of an element to CIELCh 56, 21.828, 70.812 is called "border". The border property can be set on classes, ids or directly on the HTML element.

This example shows the color as border, it can be applied via the CSS property "border" or "border-color".

```
.border, #border, table{ border:4px solid rgb(159, 129, 99) }
```

If only the border color should be changed use the property `border-color`.

```
.border{ border-color:rgb(159, 129, 99) }
```

If you want to add a box shadow in that color use:

Here you see how a box with a 4 pixel `rgb(159, 129, 99)` colored shadow looks like.

```
.boxshadow{ -moz-box-shadow:4px 4px 4px  
4px rgb(159, 129, 99); -webkit-box-  
shadow:4px 4px 4px 4px rgb(159, 129, 99);  
box-shadow:4px 4px 4px 4px rgb(159, 129,  
99) }
```

Background

The CSS property to change the background color of an element to CIELCh 56, 21.828, 70.812 is called "background". The background property can be set on classes, ids or directly on the HTML element.

```
.background, #background, body{  
background: rgb(159, 129, 99) }
```

If only the background color should be changed can be used:

```
.background{ background-color: rgb(159,  
129, 99) }
```

This example shows the color as background, it is applied via the CSS property "background".

To optimize and compress your CSS code, you can use our [online CSS compressor and optimizer](#) based on csstidy. If you want to create a linear or radial gradient as background or border, check our [CSS Gradient Generator](#).

Hey! You found this booklet interesting? Support Converting Colors with the new Membership Option!

The pro membership hides all ads, plus gives you double the colors in the color bucket, and more awesome pro features!

[Learn more, Memberships starting at \\$2.50/m!](#)

**Follow me
on Twitter!**

@ConvertingColor