

Converting Colors

CIELCh(56, 27.010, 61.842)

Have a look what the booklet for
CIELCh(56, 27.010, 61.842) contains.

CIELCh(56, 26.928, 61.003)	3
<i>Conversions</i>	4
<i>Details</i>	6
<i>Harmonies</i>	11
<i>Previews</i>	20
<i>Color Blindness Simulation</i>	23
<i>CSS Examples</i>	26

Color

CIELCh(56, 26.928, 61.003)

Conversions

Conversions Part 1

Format	Color
Hex	A97D5E
RGB	169, 125, 94
RGB Percent	66%, 49%, 37%
CMY	0.3372, 0.5098, 0.6313
CMYK	0.00, 0.26, 0.44, 0.34
HSL	25°, 30%, 52%
HSV	25°, 44%, 66%
XYZ	25.7183, 23.9124, 13.8508
YIQ	134.6220, 36.1750, -0.3130

Conversions

Conversions Part 2

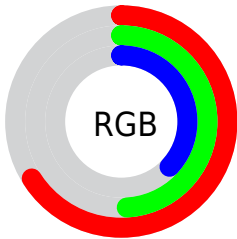
Format	Color
RYB	169, 147, 94
Decimal	11107678
CIELab	56.00, 13.05, 23.55
CIELCh	56, 26.928, 61.003
Yxy	23.9124, 0.4051, 0.3767
Android (android.graphics.Color)	4289297758 (0xFFA97D5E)
YUV	134.6220, -20.0266, 30.1495
Hunter-Lab	48.9003, 8.3036, 17.4366

Details

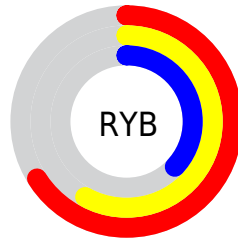
The CIELCh color **56, 26.928, 61.003** is a dark color, and the websafe version is hex **CC9966**. A complement of this color would be **56, 22.094, 252.684**, and the grayscale version is **56, 0.007, 296.813**.

A 20% lighter version of the original color is **76, 26.870, 61.115**, and **36, 27.177, 61.115** is the 20% darker color. If you saturate the color by 10%, you get **53, 34.000, 60.073**, and if you desaturate by 10%, it is **59, 20.224, 61.974**.

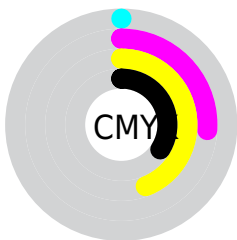
Distribution



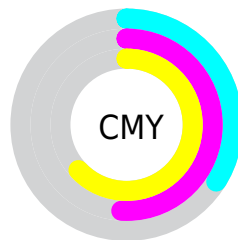
- Red (66%)
- Green (49%)
- Blue (37%)



- Red (66%)
- Yellow (58%)
- Blue (37%)



- Cyan (0%)
- Magenta (26%)
- Yellow (44%)
- Black (34%)



- Cyan (34%)
- Magenta (51%)
- Yellow (63%)

Brightness & Saturation Gradients

These gradients show how the CIELCh color 56, 26.928, 61.003 changes by changing the brightness by 10 percent. The first figure shows a shift by +10% for each color and the second figure -10%.

Similar to the brightness gradients but the following saturation gradients show a change of the CIELCh color 56, 26.928, 61.003 by changing the saturation by 10% instead.

■ 56, 26.928, 61.003

■ 56, 26.928, 61.003

■ 100, 26.928,
61.003

■ 46, 26.928, 61.003

■ 76, 26.928, 61.003

■ 36, 26.928, 61.003

■ 86, 26.928, 61.003

■ 26, 26.928, 61.003

■ 96, 26.928, 61.003

■ 16, 26.928, 61.003

■ 6, 26.928, 61.003

■ 0, 26.928, 61.003

■ 56, 26.928, 61.003

■ 56, 26.928, 61.003

■ 53, 34.000, 60.073

■ 59, 20.224, 61.974

■ 51, 41.368, 59.149

■ 62, 13.904, 62.967

48, 48.838, 58.172

65, 7.955, 63.971

46, 55.984, 56.980

68, 2.349, 64.891

44, 62.014, 55.244

71, 2.947, 246.219

42, 65.165, 54.302

74, 7.966, 247.162

77, 12.740,
248.150

80, 17.298,
249.124

84, 21.668,
250.072

Harmonies

Complementary

The Complementary color scheme is a pair of colors which are on the opposite of each other on the color wheel.



56, 26.928, 61.003



56, 22.094, 252.684

Rectangle

The Rectangle color scheme consists of four colors that form a rectangle on the color wheel.



56, 26.928, 61.003



56, 26.928, 111.003



56, 26.928, 241.003



56, 26.928, 291.003

Sweetspot

The Sweet Spot groups the original color and five complimentary colors.



56, 26.928, 61.008



83, 8.861, 64.085



50, 38.347, 342.498



43, 6.231, 63.872



94, 0.011, 296.813



46, 0.006, 296.813

Same Dimension

The Same Dimension uses a secret algorithm to generate beautiful new colors.



56, 26.928, 61.008



68, 40.912, 60.113



66, 36.677, 101.144



34, 3.073, 64.470



37, 58.885, 54.742



3, 5.394, 58.474

Inverse Universe

The Inverse Universe completely reimagines the original color for something new.



56, 22.094, 252.684



67, 31.954, 255.188



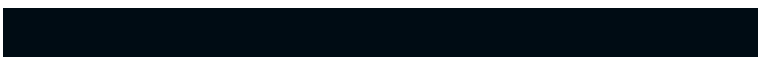
45, 40.202, 292.268



34, 2.971, 246.628



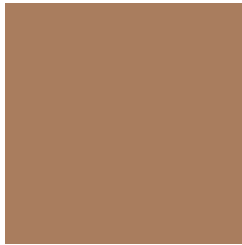
36, 39.752, 273.200



3, 5.725, 254.394

Previews

White Background



This preview shows how the CIELCh color 56, 26.928, 61.003 looks on a white background.

Color Contrast Check

Large Text (above 18pt) WCAG AA ✓ Pass

Any Text WCAG AA × Fail

Large Text (above 18pt) WCAG AAA × Fail

Any Text WCAG AAA × Fail

Black Background



This preview shows how the CIELCh color 56, 26.928, 61.003 looks on a black background.

Color Contrast Check

Large Text (above 18pt) WCAG AA ✓ Pass

Any Text WCAG AA ✓ Pass

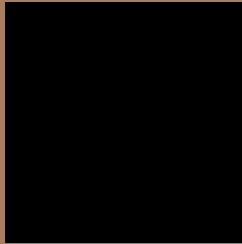
Large Text (above 18pt) WCAG AAA ✓ Pass

Any Text WCAG AAA × Fail

If you want to check with other color combinations, try the [Color Contrast Checker](#).

CIELCh 56, 26.928, 61.003

Background



This preview shows how black text looks on a background with the CIELCh color 56, 26.928, 61.003.



This preview shows how white text looks on a background with the CIELCh color 56, 26.928, 61.003.

Color Blindness Simulation

Color vision deficiency is a very complex topic, and I could not describe the different causes any better than Wikipedia does, so if you want to learn more, you should check out their [article about color blindness](#).

Dichromacy



Original Color

56, 26.928, 61.003

Protanopia

56, 20.982, 94.481

Deuteranopia

56, 24.974, 74.027



Tritanopia
56, 21.907, 8.602

Trichromacy



Original Color
56, 26.928, 61.003

Protanomaly
56, 21.962, 80.326

Deuteranomaly
56, 25.659, 70.155

Tritanomaly
56, 21.274, 30.756

Monochromacy



Original Color
56, 26.928, 61.003

Achromatopsia
56, 0.007, 296.813

Achromatomaly
56, 9.159, 62.905

CSS Examples

Text

The CSS property to change the color of the text to CIELCh 56, 26.928, 61.003 is called "color". The color property can be set on classes, ids or directly on the HTML element.

This example shows how text in the color `rgb(169, 125, 94)` looks like.

```
.text, #text, p{  
    color:rgb(169, 125, 94)  
}
```

If you want to add a text shadow in that color use the text-shadow property, you can generate a text shadow directly with our [CSS Text Shadow Generator](#).

Here you see how black text with a 4 pixel rgb(169, 125, 94) colored shadow looks like.

```
.shadow{ text-shadow: 4px 4px 2px rgb(169, 125, 94) }
```

Border

The CSS property to change the border of an element to CIELCh 56, 26.928, 61.003 is called "border". The border property can be set on classes, ids or directly on the HTML element.

This example shows the color as border, it can be applied via the CSS property "border" or "border-color".

```
.border, #border, table{ border:4px solid rgb(169, 125, 94) }
```

If only the border color should be changed use the property `border-color`.

```
.border{ border-color:rgb(169, 125, 94) }
```

If you want to add a box shadow in that color use:

Here you see how a box with a 4 pixel `rgb(169, 125, 94)` colored shadow looks like.

```
.boxshadow{ -moz-box-shadow:4px 4px 4px  
4px rgb(169, 125, 94); -webkit-box-  
shadow:4px 4px 4px 4px rgb(169, 125, 94);  
box-shadow:4px 4px 4px 4px rgb(169, 125,  
94) }
```

Background

The CSS property to change the background color of an element to CIELCh 56, 26.928, 61.003 is called "background". The background property can be set on classes, ids or directly on the HTML element.

```
.background, #background, body{  
background: rgb(169, 125, 94) }
```

If only the background color should be changed can be used:

```
.background{ background-color: rgb(169,  
125, 94) }
```

This example shows the color as background, it is applied via the CSS property "background".

To optimize and compress your CSS code, you can use our [online CSS compressor and optimizer](#) based on csstidy. If you want to create a linear or radial gradient as background or border, check our [CSS Gradient Generator](#).

Hey! You found this booklet interesting? Support Converting Colors with the new Membership Option!

The pro membership hides all ads, plus gives you double the colors in the color bucket, and more awesome pro features!

[Learn more, Memberships starting at \\$2.50/m!](#)

**Follow me
on Twitter!**

@ConvertingColor