

Converting Colors

CIELCh(56, 28.677, 43.650)

Have a look what the booklet for
CIELCh(56, 28.677, 43.650) contains.

CIELCh(56, 28.733, 43.652)	3
<i>Conversions</i>	4
<i>Details</i>	6
<i>Harmonies</i>	11
<i>Previews</i>	20
<i>Color Blindness Simulation</i>	23
<i>CSS Examples</i>	26

Color

CIELCh(56, 28.733, 43.652)

Conversions

Conversions Part 1

Format	Color
Hex	B37865
RGB	179, 120, 101
RGB Percent	70%, 47%, 40%
CMY	0.2985, 0.5298, 0.6043
CMYK	0.00, 0.33, 0.44, 0.30
HSL	15°, 34%, 55%
HSV	15°, 44%, 70%
XYZ	27.6084, 23.9124, 15.4446
YIQ	135.4750, 41.2630, 6.5990

Conversions

Conversions Part 2

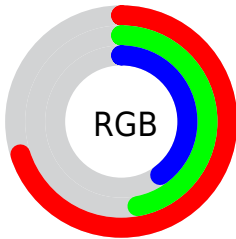
Format	Color
R_{YB}	179, 126, 101
Decimal	11761765
CIE Lab	56.00, 20.79, 19.83
CIE LCh	56, 28.733, 43.652
Yxy	23.9124, 0.4123, 0.3571
Android (android.graphics.Color)	4289951845 (0xFFB37865)
YUV	135.4750, -16.9962, 38.1714
Hunter-Lab	48.9003, 15.2030, 15.5042

Details

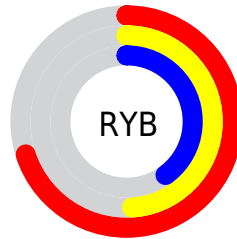
The CIELCh color **56, 28.733, 43.652** is a dark color, and the websafe version is hex **996666**. A complement of this color would be **63, 21.223, 228.374**, and the grayscale version is **57, 0.007, 296.813**.

A 20% lighter version of the original color is **76, 28.827, 44.000**, and **36, 28.813, 43.765** is the 20% darker color. If you saturate the color by 10%, you get **52, 36.738, 43.807**, and if you desaturate by 10%, it is **60, 21.264, 43.673**.

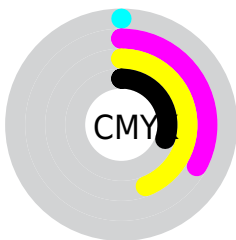
Distribution



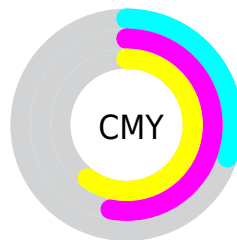
- Red (70%)
- Green (47%)
- Blue (40%)



- Red (70%)
- Yellow (49%)
- Blue (40%)



- Cyan (0%)
- Magenta (33%)
- Yellow (44%)
- Black (30%)



- Cyan (30%)
- Magenta (53%)
- Yellow (60%)

Brightness & Saturation Gradients

These gradients show how the CIELCh color 56, 28.733, 43.652 changes by changing the brightness by 10 percent. The first figure shows a shift by +10% for each color and the second figure -10%.

Similar to the brightness gradients but the following saturation gradients show a change of the CIELCh color 56, 28.733, 43.652 by changing the saturation by 10% instead.

■ 56, 28.733, 43.652

■ 56, 28.733, 43.652

■ 100, 28.733,
43.652

■ 46, 28.733, 43.652

■ 76, 28.733, 43.652

■ 36, 28.733, 43.652

■ 86, 28.733, 43.652

■ 26, 28.733, 43.652

■ 96, 28.733, 43.652

■ 16, 28.733, 43.652

■ 6, 28.733, 43.652

■ 0, 28.733, 43.652

■ 56, 28.733, 43.652

■ 56, 28.733, 43.652

■ 52, 36.738, 43.807

■ 60, 21.264, 43.673

■ 49, 45.216, 44.133

■ 64, 14.340, 43.827

46, 53.988, 44.598

67, 7.938, 44.077

44, 62.632, 45.046

71, 2.018, 44.262

41, 70.231, 45.066

75, 3.468, 225.072

40, 74.506, 45.071

80, 8.565, 225.461

84, 13.319,
225.943

88, 17.772,
226.453

92, 20.922,
217.643

Harmonies

Complementary

The Complementary color scheme is a pair of colors which are on the opposite of each other on the color wheel.



56, 28.733, 43.652



63, 21.223, 228.374

Rectangle

The Rectangle color scheme consists of four colors that form a rectangle on the color wheel.



56, 28.733, 43.652



56, 28.733, 93.652



56, 28.733, 223.652



56, 28.733, 273.652

Sweetspot

The Sweet Spot groups the original color and five complimentary colors.



56, 28.732, 43.657



86, 9.364, 44.088



53, 44.023, 334.692



45, 6.664, 44.027



96, 0.011, 296.813



49, 0.007, 296.813

Same Dimension

The Same Dimension uses a secret algorithm to generate beautiful new colors.



56, 28.732, 43.657



68, 43.921, 43.790



66, 32.627, 90.674



36, 3.245, 44.194



34, 66.041, 45.378



3, 7.812, 38.107

Inverse Universe

The Inverse Universe completely reimagines the original color for something new.



63, 21.223, 228.374



77, 29.978, 229.892



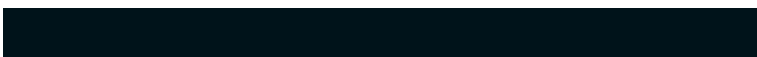
52, 33.566, 283.232



37, 3.074, 225.196



45, 30.923, 244.185



5, 7.483, 236.027

Previews

White Background



This preview shows how the CIELCh color 56, 28.733, 43.652 looks on a white background.

Color Contrast Check

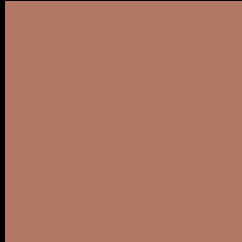
Large Text (above 18pt) WCAG AA ✓ Pass

Any Text WCAG AA ✗ Fail

Large Text (above 18pt) WCAG AAA ✗ Fail

Any Text WCAG AAA ✗ Fail

Black Background



This preview shows how the CIE LCh color 56, 28.733, 43.652 looks on a black background.

Color Contrast Check

Large Text (above 18pt) WCAG AA ✓ Pass

Any Text WCAG AA ✓ Pass

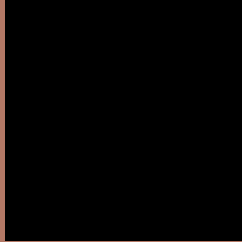
Large Text (above 18pt) WCAG AAA ✓ Pass

Any Text WCAG AAA × Fail

If you want to check with other color combinations, try the [Color Contrast Checker](#).

CIELCh 56, 28.733, 43.652

Background



This preview shows how black text looks on a background with the CIELCh color 56, 28.733, 43.652.

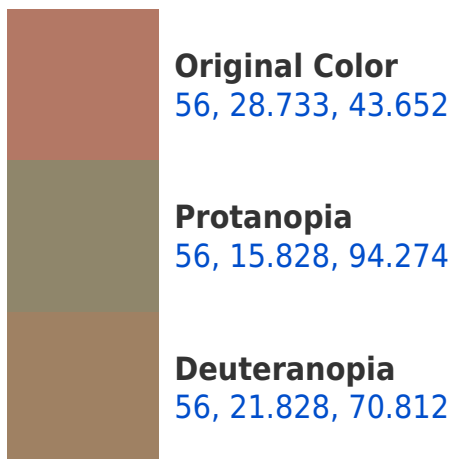


This preview shows how white text looks on a background with the CIELCh color 56, 28.733, 43.652.

Color Blindness Simulation

Color vision deficiency is a very complex topic, and I could not describe the different causes any better than Wikipedia does, so if you want to learn more, you should check out their [article about color blindness](#).

Dichromacy





Tritanopia
56, 27.393, 12.121

Trichromacy



Original Color
56, 28.733, 43.652

Protanomaly
56, 18.179, 68.353

Deuteranomaly
56, 23.407, 59.375

Tritanomaly
56, 26.921, 23.691

Monochromacy



Original Color
56, 28.733, 43.652

Achromatopsia
56, 0.007, 296.813

Achromatomaly
56, 9.582, 44.664

CSS Examples

Text

The CSS property to change the color of the text to CIELCh 56, 28.733, 43.652 is called "color". The color property can be set on classes, ids or directly on the HTML element.

This example shows how text in the color `rgb(179, 120, 101)` looks like.

```
.text, #text, p{  
    color:rgb(179, 120, 101)  
}
```

If you want to add a text shadow in that color use the text-shadow property, you can generate a text shadow directly with our [CSS Text Shadow Generator](#).

Here you see how black text with a 4 pixel rgb(179, 120, 101) colored shadow looks like.

```
.shadow{ text-shadow: 4px 4px 2px rgb(179, 120, 101) }
```

Border

The CSS property to change the border of an element to CIELCh 56, 28.733, 43.652 is called "border". The border property can be set on classes, ids or directly on the HTML element.

This example shows the color as border, it can be applied via the CSS property "border" or "border-color".

```
.border, #border, table{ border:4px solid rgb(179, 120, 101) }
```

If only the border color should be changed use the property `border-color`.

```
.border{ border-color:rgb(179, 120, 101) }
```

If you want to add a box shadow in that color use:

Here you see how a box with a 4 pixel `rgb(179, 120, 101)` colored shadow looks like.

```
.boxshadow{ -moz-box-shadow:4px 4px 4px 4px rgb(179, 120, 101); -webkit-box-shadow:4px 4px 4px 4px rgb(179, 120, 101); box-shadow:4px 4px 4px 4px rgb(179, 120, 101) }
```

Background

The CSS property to change the background color of an element to CIELCh 56, 28.733, 43.652 is called "background". The background property can be set on classes, ids or directly on the HTML element.

```
.background, #background, body{  
background: rgb(179, 120, 101) }
```

If only the background color should be changed can be used:

```
.background{ background-color: rgb(179,  
120, 101) }
```

This example shows the color as background, it is applied via the CSS property "background".

To optimize and compress your CSS code, you can use our [online CSS compressor and optimizer](#) based on csstidy. If you want to create a linear or radial gradient as background or border, check our [CSS Gradient Generator](#).

Hey! You found this booklet interesting? Support Converting Colors with the new Membership Option!

The pro membership hides all ads, plus gives you double the colors in the color bucket, and more awesome pro features!

[Learn more, Memberships starting at \\$2.50/m!](#)

**Follow me
on Twitter!**

@ConvertingColor