

Converting Colors

CIELCh(56, 35.820, 28.891)

Have a look what the booklet for
CIELCh(56, 35.820, 28.891) contains.

CIELCh(56, 35.757, 28.861)	3
<i>Conversions</i>	4
<i>Details</i>	6
<i>Harmonies</i>	11
<i>Previews</i>	20
<i>Color Blindness Simulation</i>	23
<i>CSS Examples</i>	26

Color

CIELCh(56, 35.757, 28.861)

Conversions

Conversions Part 1

Format	Color
Hex	C1706A
RGB	193, 112, 106
RGB Percent	76%, 44%, 42%
CMY	0.2438, 0.5613, 0.5848
CMYK	0.00, 0.42, 0.45, 0.24
HSL	4°, 41%, 59%
HSV	4°, 45%, 76%
XYZ	30.3258, 23.9124, 16.6166
YIQ	135.5350, 50.2020, 15.3060

Conversions

Conversions Part 2

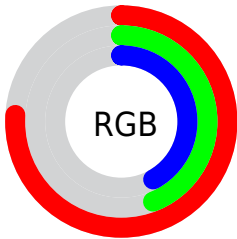
Format	Color
R_{YB}	193, 112, 106
Decimal	12677226
CIE Lab	56.00, 31.32, 17.26
CIE LCh	56, 35.757, 28.861
Yxy	23.9124, 0.4280, 0.3375
Android (android.graphics.Color)	4290867306 (0xFFC1706A)
YUV	135.5350, -14.5608, 50.3968
Hunter-Lab	48.9003, 25.1223, 14.0832

Details

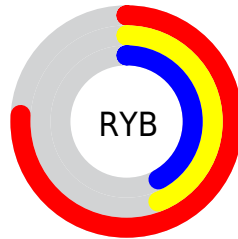
The CIELCh color **56, 35.757, 28.861** is a dark color, and the websafe version is hex **CC6666**. A complement of this color would be **71, 25.541, 204.930**, and the grayscale version is **57, 0.007, 296.813**.

A 20% lighter version of the original color is **76, 35.766, 29.230**, and **36, 35.677, 28.494** is the 20% darker color. If you saturate the color by 10%, you get **52, 45.177, 30.415**, and if you desaturate by 10%, it is **61, 26.805, 27.691**.

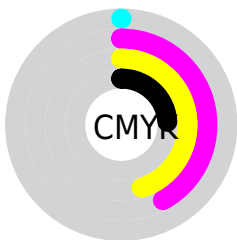
Distribution



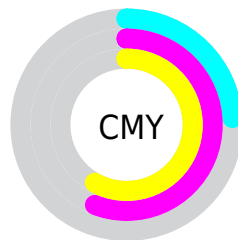
- Red (76%)
- Green (44%)
- Blue (42%)



- Red (76%)
- Yellow (44%)
- Blue (42%)



- Cyan (0%)
- Magenta (42%)
- Yellow (45%)
- Black (24%)



- Cyan (24%)
- Magenta (56%)
- Yellow (58%)

Brightness & Saturation Gradients

These gradients show how the CIELCh color 56, 35.757, 28.861 changes by changing the brightness by 10 percent. The first figure shows a shift by +10% for each color and the second figure -10%.

Similar to the brightness gradients but the following saturation gradients show a change of the CIELCh color 56, 35.757, 28.861 by changing the saturation by 10% instead.

■ 56, 35.757, 28.861

■ 56, 35.757, 28.861

■ 100, 35.757,
28.861

■ 46, 35.757, 28.861

■ 76, 35.757, 28.861

■ 36, 35.757, 28.861

■ 86, 35.757, 28.861

■ 26, 35.757, 28.861

■ 96, 35.757, 28.861

■ 16, 35.757, 28.861

■ 6, 35.757, 28.861

■ 0, 35.757, 28.861

■ 56, 35.757, 28.861

■ 56, 35.757, 28.861

■ 52, 45.177, 30.415

■ 61, 26.805, 27.691

■ 48, 54.886, 32.404

■ 65, 18.423, 26.814

45, 64.570, 34.827

70, 10.643, 26.158

43, 73.657, 37.464

75, 3.452, 25.593

41, 80.907, 39.629

81, 3.185, 205.594

41, 83.795, 40.705

86, 9.318, 205.256

91, 15.000,
205.083

96, 20.258,
198.171

Harmonies

Complementary

The Complementary color scheme is a pair of colors which are on the opposite of each other on the color wheel.



56, 35.757, 28.861



71, 25.541, 204.930

Rectangle

The Rectangle color scheme consists of four colors that form a rectangle on the color wheel.



56, 35.757, 28.861



56, 35.757, 78.861



56, 35.757, 208.861



56, 35.757, 258.861

Sweetspot

The Sweet Spot groups the original color and five complimentary colors.



56, 35.755, 28.865



89, 12.134, 26.107



57, 54.039, 328.800



46, 8.450, 26.233



99, 0.012, 296.813



52, 0.007, 296.813

Same Dimension

The Same Dimension uses a secret algorithm to generate beautiful new colors.



56, 35.755, 28.865



67, 54.602, 30.370



66, 31.996, 76.342



38, 3.919, 25.843



34, 72.790, 40.667



3, 13.385, 23.354

Inverse Universe

The Inverse Universe completely reimagines the original color for something new.



71, 25.541, 204.930



89, 35.742, 205.094



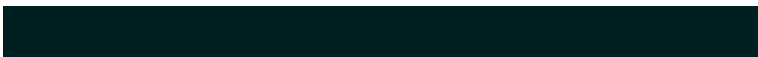
59, 29.677, 270.438



40, 3.691, 205.375



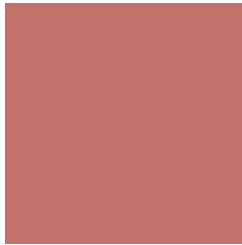
56, 32.520, 208.021



10, 11.522, 205.291

Previews

White Background



This preview shows how the CIELCh color 56, 35.757, 28.861 looks on a white background.

Color Contrast Check

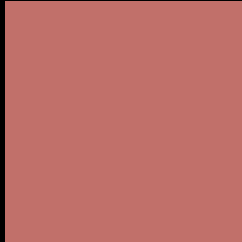
Large Text (above 18pt) WCAG AA ✓ Pass

Any Text WCAG AA ✗ Fail

Large Text (above 18pt) WCAG AAA ✗ Fail

Any Text WCAG AAA ✗ Fail

Black Background



This preview shows how the CIELCh color 56, 35.757, 28.861 looks on a black background.

Color Contrast Check

Large Text (above 18pt) WCAG AA ✓ Pass

Any Text WCAG AA ✓ Pass

Large Text (above 18pt) WCAG AAA ✓ Pass

Any Text WCAG AAA × Fail

If you want to check with other color combinations, try the [Color Contrast Checker](#).

CIELCh 56, 35.757, 28.861

Background



This preview shows how black text looks on a background with the CIELCh color 56, 35.757, 28.861.

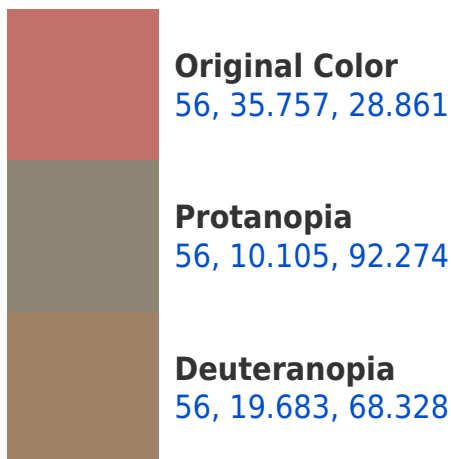


This preview shows how white text looks on a background with the CIELCh color 56, 35.757, 28.861.

Color Blindness Simulation

Color vision deficiency is a very complex topic, and I could not describe the different causes any better than Wikipedia does, so if you want to learn more, you should check out their [article about color blindness](#).

Dichromacy





Tritanopia
56, 35.612, 16.731

Trichromacy



Original Color
56, 35.757, 28.861

Protanomaly
56, 16.452, 47.265

Deuteranomaly
56, 24.034, 47.704

Tritanomaly
56, 35.482, 21.070

Monochromacy



Original Color
56, 35.757, 28.861

Achromatopsia
56, 0.007, 296.813

Achromatomaly
56, 12.152, 28.673

CSS Examples

Text

The CSS property to change the color of the text to CIELCh 56, 35.757, 28.861 is called "color". The color property can be set on classes, ids or directly on the HTML element.

This example shows how text in the color `rgb(193, 112, 106)` looks like.

```
.text, #text, p{  
    color:rgb(193, 112, 106)  
}
```

If you want to add a text shadow in that color use the text-shadow property, you can generate a text shadow directly with our [CSS Text Shadow Generator](#).

Here you see how black text with a 4 pixel rgb(193, 112, 106) colored shadow looks like.

```
.shadow{ text-shadow: 4px 4px 2px rgb(193, 112, 106) }
```

Border

The CSS property to change the border of an element to CIELCh 56, 35.757, 28.861 is called "border". The border property can be set on classes, ids or directly on the HTML element.

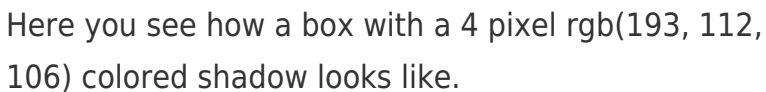
This example shows the color as border, it can be applied via the CSS property "border" or "border-color".

```
.border, #border, table{ border:4px solid rgb(193, 112, 106) }
```

If only the border color should be changed use the property `border-color`.

```
.border{ border-color:rgb(193, 112, 106) }
```

If you want to add a box shadow in that color use:



Here you see how a box with a 4 pixel `rgb(193, 112, 106)` colored shadow looks like.

```
.boxshadow{ -moz-box-shadow:4px 4px 4px  
4px rgb(193, 112, 106); -webkit-box-  
shadow:4px 4px 4px 4px rgb(193, 112, 106);  
box-shadow:4px 4px 4px 4px rgb(193, 112,  
106) }
```

Background

The CSS property to change the background color of an element to CIELCh 56, 35.757, 28.861 is called "background". The background property can be set on classes, ids or directly on the HTML element.

```
.background, #background, body{  
background: rgb(193, 112, 106) }
```

If only the background color should be changed can be used:

```
.background{ background-color: rgb(193,  
112, 106) }
```

This example shows the color as background, it is applied via the CSS property "background".

To optimize and compress your CSS code, you can use our [online CSS compressor and optimizer](#) based on csstidy. If you want to create a linear or radial gradient as background or border, check our [CSS Gradient Generator](#).

Hey! You found this booklet interesting? Support Converting Colors with the new Membership Option!

The pro membership hides all ads, plus gives you double the colors in the color bucket, and more awesome pro features!

[Learn more, Memberships starting at \\$2.50/m!](#)

**Follow me
on Twitter!**

@ConvertingColor