

Converting Colors

CIELCh(56, 68.647, 10.818)

Have a look what the booklet for
CIELCh(56, 68.647, 10.818) contains.

CIELCh(56, 68.744, 11.052)	3
<i>Conversions</i>	4
<i>Details</i>	6
<i>Harmonies</i>	11
<i>Previews</i>	20
<i>Color Blindness Simulation</i>	23
<i>CSS Examples</i>	26

Color

CIELCh(56, 68.744, 11.052)

Conversions

Conversions Part 1

Format	Color
Hex	F04573
RGB	240, 69, 115
RGB Percent	94%, 27%, 45%
CMY	0.0601, 0.7307, 0.5501
CMYK	0.00, 0.71, 0.52, 0.06
HSL	344°, 85%, 60%
HSV	344°, 71%, 94%
XYZ	41.0074, 23.9124, 18.5937
YIQ	125.3730, 87.1500, 50.5580

Conversions

Conversions Part 2

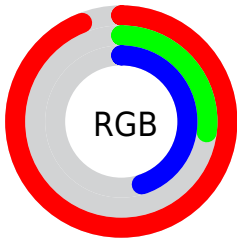
Format	Color
RYB	240, 69, 115
Decimal	15746419
CIELab	56.00, 67.47, 13.18
CIElCh	56, 68.744, 11.052
Yxy	23.9124, 0.4910, 0.2863
Android (android.graphics.Color)	4293936499 (0xFFFF04573)
YUV	125.3730, -5.1139, 100.5279
Hunter-Lab	48.9003, 64.1130, 11.6860

Details

The CIELCh color **56, 68.744, 11.052** is a dark color, and the websafe version is hex **CC3366**. The color can be described as middle washed rose. A complement of this color would be **86, 54.585, 169.555**, and the grayscale version is **52, 0.007, 296.813**.

A 20% lighter version of the original color is **69, 51.745, 2.555**, and **38, 65.060, 13.790** is the 20% darker color. If you saturate the color by 10%, you get **53, 75.815, 15.094**, and if you desaturate by 10%, it is **60, 60.286, 7.856**.

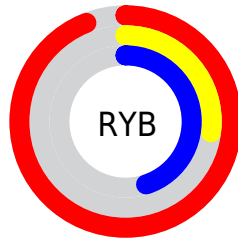
Distribution



Red (94%)

Green (27%)

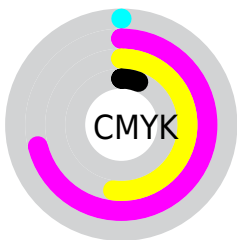
Blue (45%)



Red (94%)

Yellow (27%)

Blue (45%)

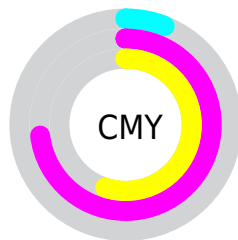


Cyan (0%)

Magenta (71%)

Yellow (52%)

Black (6%)



Cyan (6%)

Magenta (73%)

Yellow (55%)

Brightness & Saturation Gradients

These gradients show how the CIELCh color 56, 68.744, 11.052 changes by changing the brightness by 10 percent. The first figure shows a shift by +10% for each color and the second figure -10%.

Similar to the brightness gradients but the following saturation gradients show a change of the CIELCh color 56, 68.744, 11.052 by changing the saturation by 10% instead.

■ 56, 68.744, 11.052

■ 56, 68.744, 11.052

■ 100, 68.744,
11.052

■ 46, 68.744, 11.052

■ 76, 68.744, 11.052

■ 36, 68.744, 11.052

■ 86, 68.744, 11.052

■ 26, 68.744, 11.052

■ 96, 68.744, 11.052

■ 16, 68.744, 11.052

■ 6, 68.744, 11.052

■ 0, 68.744, 11.052

■ 56, 68.744, 11.052

■ 56, 68.744, 11.052

■ 53, 75.815, 15.094

■ 60, 60.286, 7.856

■ 51, 81.447, 20.053

■ 64, 50.810, 5.335

51, 85.571, 24.849

70, 40.762, 3.326

75, 30.543, 1.693

81, 20.441, 0.335

87, 10.641,
359.170

94, 1.239, 357.790

99, 5.281, 198.166

99, 5.277, 199.196

Harmonies

Complementary

The Complementary color scheme is a pair of colors which are on the opposite of each other on the color wheel.



56, 68.744, 11.052



86, 54.585, 169.555

Rectangle

The Rectangle color scheme consists of four colors that form a rectangle on the color wheel.



56, 68.744, 11.052



56, 68.744, 61.052



56, 68.744, 191.052



56, 68.744, 241.052

Sweetspot

The Sweet Spot groups the original color and five complimentary colors.



56, 68.740, 11.054



86, 21.134, 0.301



54, 96.560, 318.769



44, 14.380, 0.653



0, 0.000, 0.000



53, 0.007, 296.813

Same Dimension

The Same Dimension uses a secret algorithm to generate beautiful new colors.



56, 68.740, 11.054



55, 82.552, 17.432



61, 67.153, 42.673



47, 5.307, 358.965



38, 69.591, 23.792



8, 28.829, 12.074

Inverse Universe

The Inverse Universe completely reimagines the original color for something new.



56, 68.740, 11.054



55, 82.552, 17.432



76, 37.609, 229.820



47, 5.307, 358.965



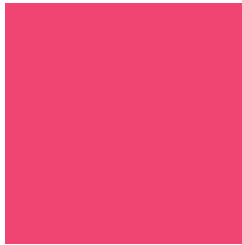
38, 69.591, 23.792



8, 28.829, 12.074

Previews

White Background



This preview shows how the CIELCh color 56, 68.744, 11.052 looks on a white background.

Color Contrast Check

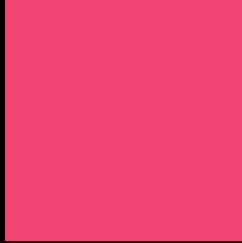
Large Text (above 18pt) WCAG AA ✓ Pass

Any Text WCAG AA ✗ Fail

Large Text (above 18pt) WCAG AAA ✗ Fail

Any Text WCAG AAA ✗ Fail

Black Background



This preview shows how the CIELCh color 56, 68.744, 11.052 looks on a black background.

Color Contrast Check

Large Text (above 18pt) WCAG AA ✓ Pass

Any Text WCAG AA ✓ Pass

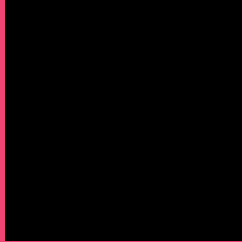
Large Text (above 18pt) WCAG AAA ✓ Pass

Any Text WCAG AAA × Fail

If you want to check with other color combinations, try the [Color Contrast Checker](#).

CIELCh 56, 68.744, 11.052

Background



This preview shows how black text looks on a background with the CIELCh color 56, 68.744, 11.052.



This preview shows how white text looks on a background with the CIELCh color 56, 68.744, 11.052.

Color Blindness Simulation

Color vision deficiency is a very complex topic, and I could not describe the different causes any better than Wikipedia does, so if you want to learn more, you should check out their [article about color blindness](#).

Dichromacy



Original Color

56, 68.744, 11.052

Protanopia

56, 8.587, 288.695

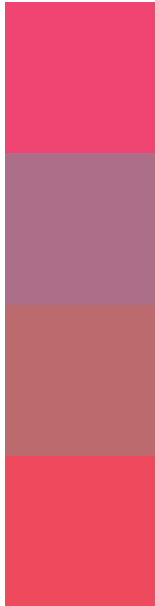
Deuteranopia

56, 18.032, 66.275



Tritanopia
56, 70.542, 28.367

Trichromacy



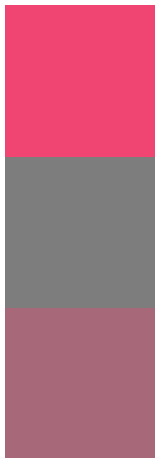
Original Color
56, 68.744, 11.052

Protanomaly
54, 28.870, 350.980

Deuteranomaly
54, 34.510, 21.876

Tritanomaly
56, 69.294, 22.027

Monochromacy



Original Color
56, 68.744, 11.052

Achromatopsia
52, 0.007, 296.813

Achromatomaly
51, 27.062, 3.283

CSS Examples

Text

The CSS property to change the color of the text to CIELCh 56, 68.744, 11.052 is called "color". The color property can be set on classes, ids or directly on the HTML element.

This example shows how text in the color `rgb(240, 69, 115)` looks like.

```
.text, #text, p{  
    color:rgb(240, 69, 115)  
}
```

If you want to add a text shadow in that color use the text-shadow property, you can generate a text shadow directly with our [CSS Text Shadow Generator](#).

Here you see how black text with a 4 pixel rgb(240, 69, 115) colored shadow looks like.

```
.shadow{ text-shadow: 4px 4px 2px rgb(240, 69, 115) }
```

Border

The CSS property to change the border of an element to CIELCh 56, 68.744, 11.052 is called "border". The border property can be set on classes, ids or directly on the HTML element.

This example shows the color as border, it can be applied via the CSS property "border" or "border-color".

```
.border, #border, table{ border:4px solid rgb(240, 69, 115) }
```

If only the border color should be changed use the property `border-color`.

```
.border{ border-color:rgb(240, 69, 115) }
```

If you want to add a box shadow in that color use:

Here you see how a box with a 4 pixel `rgb(240, 69, 115)` colored shadow looks like.

```
.boxshadow{ -moz-box-shadow:4px 4px 4px  
4px rgb(240, 69, 115); -webkit-box-  
shadow:4px 4px 4px 4px rgb(240, 69, 115);  
box-shadow:4px 4px 4px 4px rgb(240, 69,  
115) }
```

Background

The CSS property to change the background color of an element to CIELCh 56, 68.744, 11.052 is called "background". The background property can be set on classes, ids or directly on the HTML element.

```
.background, #background, body{  
background: rgb(240, 69, 115) }
```

If only the background color should be changed can be used:

```
.background{ background-color: rgb(240, 69,  
115) }
```

This example shows the color as background, it is applied via the CSS property "background".

To optimize and compress your CSS code, you can use our [online CSS compressor and optimizer](#) based on csstidy. If you want to create a linear or radial gradient as background or border, check our [CSS Gradient Generator](#).

Hey! You found this booklet interesting? Support Converting Colors with the new Membership Option!

The pro membership hides all ads, plus gives you double the colors in the color bucket, and more awesome pro features!

[Learn more, Memberships starting at \\$2.50/m!](#)

**Follow me
on Twitter!**

@ConvertingColor